

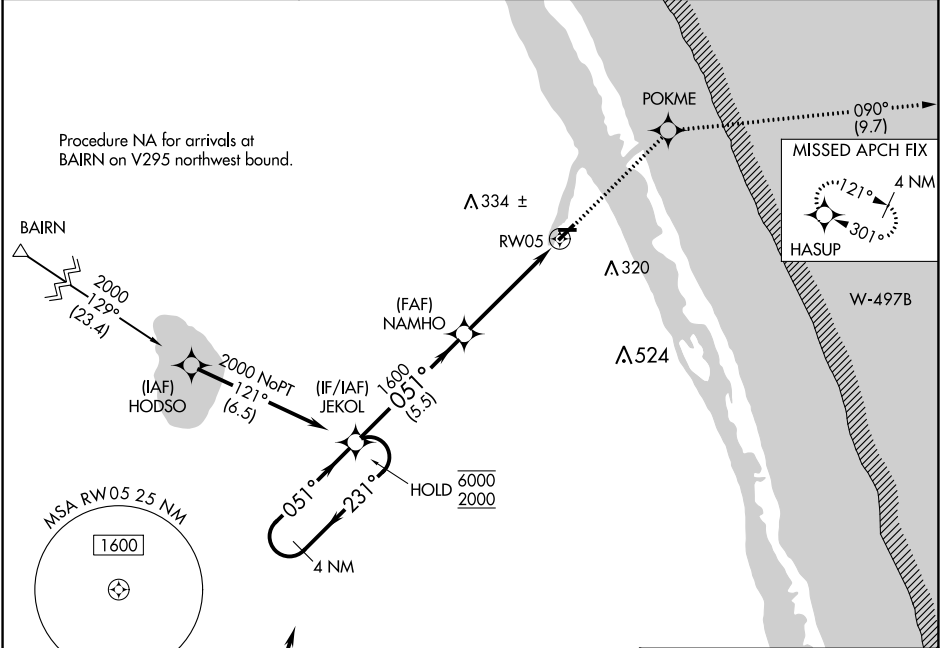
APP CRS <b>051°</b>	Rwy Idg TDZE Apt Elev	<b>N/A</b> <b>N/A</b> <b>22</b>
------------------------	-----------------------------	---------------------------------------

# RNAV (GPS)-A

SEBASTIAN MUNI (X26)

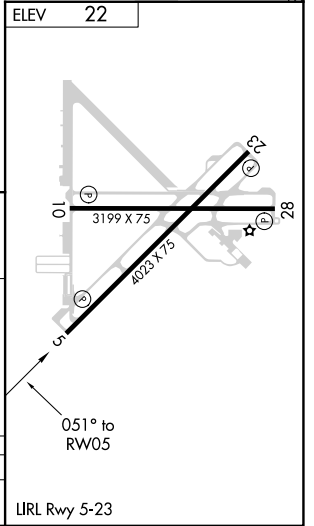
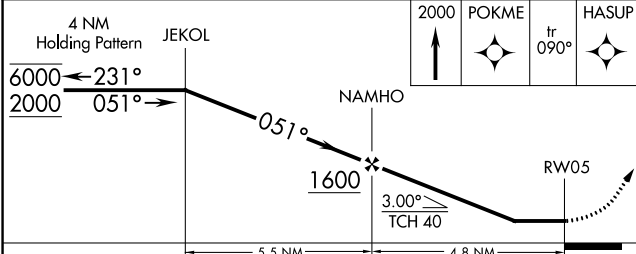
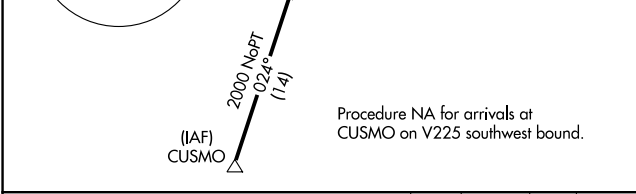
RNP APCH.	<p><b>NA</b> Procedure NA at night. When local altimeter setting not received, use Vero Beach altimeter setting and increase all MDA 40 feet and Cat C visibility ¼ SM.</p>	<p><b>MISSED APPROACH:</b> Climb to 2000 direct POKME and on track 090° to HASUP and hold.</p>
-----------	---	--

AWOS-3PT <b>118.125</b>	PALM BEACH APP CON <b>123.625 225.4</b>	CTAF <b>123.05</b>
----------------------------	--	-----------------------



SE-3, 22 FEB 2024 to 21 MAR 2024

SE-3, 22 FEB 2024 to 21 MAR 2024



CATEGORY	A	B	C	D
CIRCLING	520-1	498 (500-1)	620-1½ 598 (600-1½)	NA

APP CRS	Rwy Idg	N/A
<b>231°</b>	TDZE	N/A
	Apt Elev	<b>22</b>

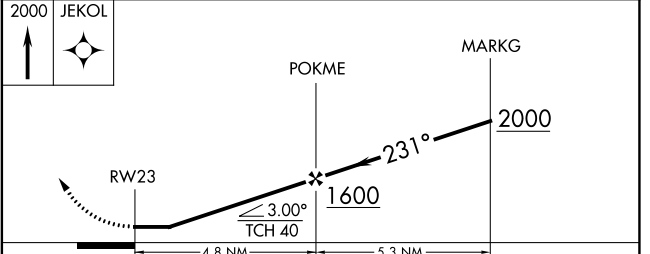
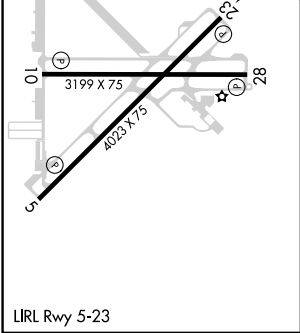
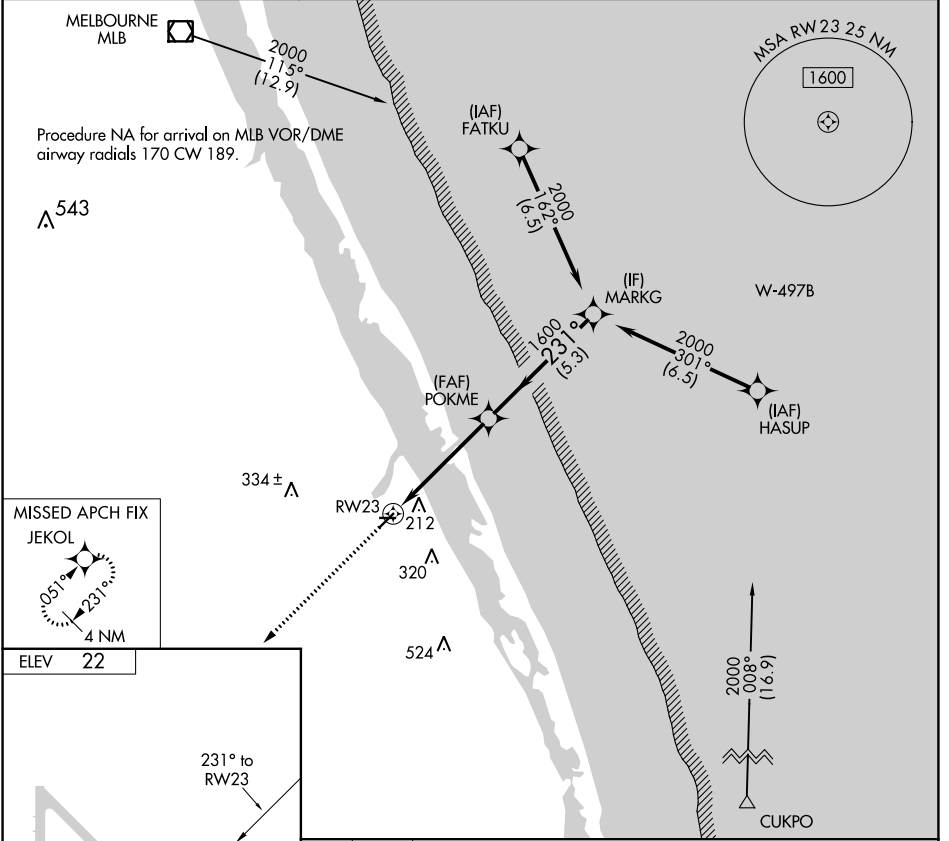
# RNAV (GPS)-B

SEBASTIAN MUNI (X26)

RNP APCH. Procedure NA at night. When local altimeter setting not received, use Vero Beach NA altimeter setting and increase all MDA 40 feet and Cat C visibility 1/4 SM.

MISSED APPROACH: Climb to 2000 direct JEKOL and hold.

AWOS-3PT <b>118.125</b>	PALM BEACH APP CON <b>123.625 225.4</b>	CTAF <b>123.05</b>
----------------------------	--	-----------------------



CATEGORY	A	B	C	D
<b>C</b> CIRCLING	520-1	498 (500-1)	620-1½ 598 (600-1½)	NA

SE-3, 22 FEB 2024 to 21 MAR 2024

SE-3, 22 FEB 2024 to 21 MAR 2024