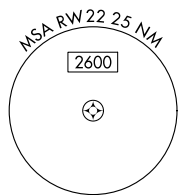


APP CRS	Rwy Idg	N/A
216°	TDZE	N/A
	Apt Elev	419

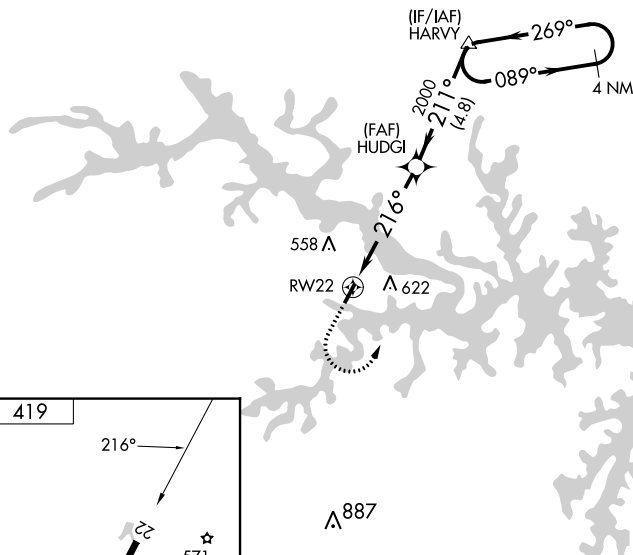
RNAV (GPS)-B

LAKE COUNTRY RGNL (W63)

	DME/DME RNP-0.3 NA. Procedure NA at night. When local altimeter setting not received, use Chase City altimeter setting and increase all MDA 40 feet. Helicopter visibility reduction below 1 SM NA.		MISSED APPROACH: Climbing left turn to 3000 direct HARVY and hold.
	AWOS-3 118.225	WASHINGTON CENTER 118.75 377.1	



NoPT for arrival at HARVY on V3 southwest bound and on V266 westbound.



NE-3, 22 FEB 2024 to 21 MAR 2024

NE-3, 22 FEB 2024 to 21 MAR 2024

