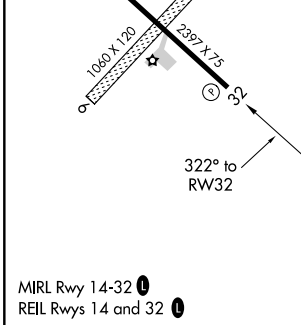
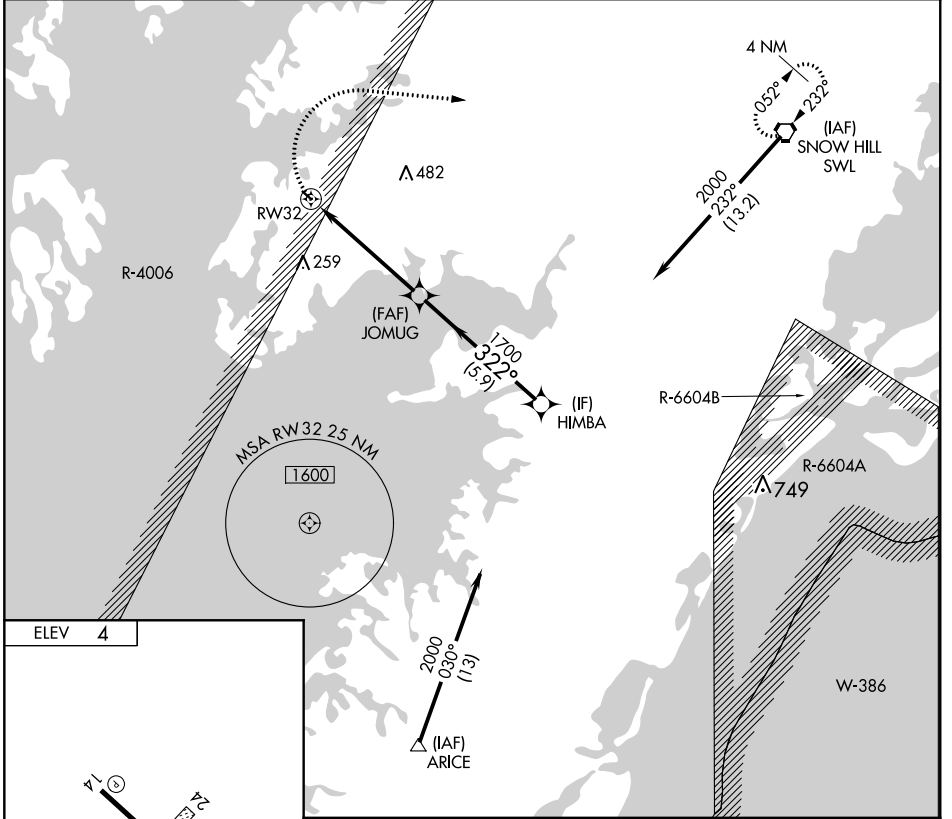


APP CRS 322°	Rwy ldg TDZE Apt Elev	N/A N/A 4
------------------------	-----------------------------	--------------------------------------

RNAV (GPS)-B

CRISFIELD-SOMERSET COUNTY (W41)

RNP APCH.		MISSED APPROACH: Climbing right turn to 2000 direct SWL VORTAC and hold.
Circling NA to Rwys 6 and 24. Procedure NA at night. Use Wallops Island altimeter setting.	WAL ASOS 119.175	PATUXENT APP CON ★ 127.95 314.0
		UNICOM 122.8 (CTAF) 0



2000	SWL	Visual Segment - Obstacles.			
RW32		JOMUG	HIMBA		
		1700	2000		
		5.2 NM	5.9 NM		
CATEGORY	A	B	C	D	
CIRCLING	520-1	516 (600-1)	NA		

NE-3, 16 JUN 2022 to 14 JUL 2022

NE-3, 16 JUN 2022 to 14 JUL 2022