

# BOBZY FOUR DEPARTURE (RNAV)

**TOP ALTITUDE:**  
3000

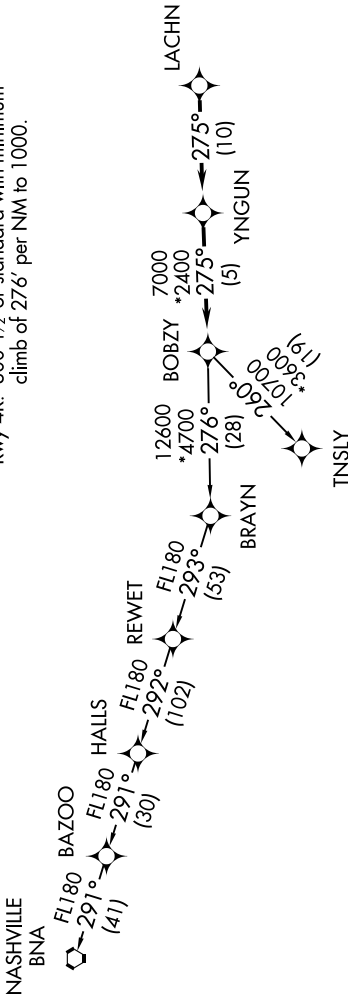
**TAKEOFF MINIMUMS**

Rwys 4L, 22R: NA.

Rwy 22L: Standard.

Rwy 4R: 300-1/2 or standard with minimum climb of 276' per NM to 1000.

AWOS-3  
128.175  
CLINC DEL  
121.75 254.375  
GND CON  
121.75 254.375  
STANLY COUNTY TOWER \*  
126.275 (CTAF) 291.9  
CHARLOTTE DEP CON  
128.325 307.8



**DEPARTURE ROUTE DESCRIPTION**

Climb on heading assigned by ATC, expect RADAR vectors to LACHN, then on depicted route to BOBZY, then on assigned transition. Maintain 3000. Expect clearance to filed altitude within 10 minutes after departure.

NASHVILLE TRANSITION (BOBZY4.BNA)  
TNSLY TRANSITION (BOBZY4.TNSLY)

- NOTE: For turbojets only.
- NOTE: DME/DME/IRU or GPS required.
- NOTE: RNAV 1.
- NOTE: RADAR required.
- NOTE: If unable to accept climb rates, advise ATC on initial contact.
- NOTE: Upon reaching 10000 MSL, accelerate to and maintain 280K, if unable advise ATC.

NOTE: Chart not to scale.