

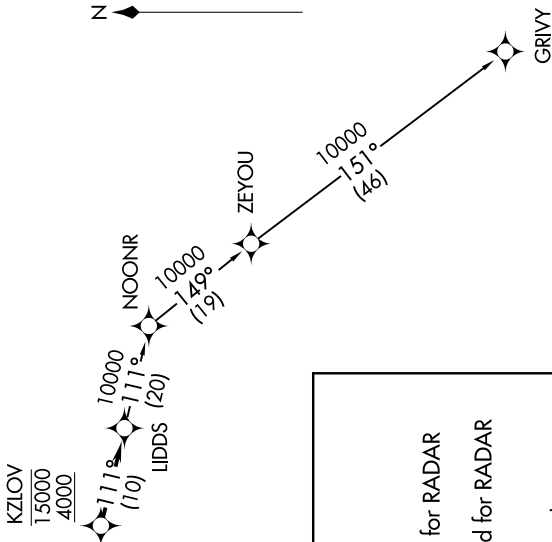
EC-1, 22 FEB 2024 to 21 MAR 2024

**TOP ALTITUDE:
ASSIGNED BY ATC**



TAKEOFF MINIMUMS:
 Rwy 9: Standard.
 Rwy 27: Standard with minimum climb
 of 476' per NM to 1500.

AWOS-3
 119.475
 CTAF
 123.05
 DETROIT DEP CON
 132.35 284.0



NOTE: RNAV 1.
 NOTE: RADAR required.
 NOTE: DME/DME/IRU or GPS required.
 NOTE: Turbojet departures at/above 10000,
 maintain 280K until advised by ATC.

DEPARTURE ROUTE DESCRIPTION

TAKEOFF RUNWAY 9: Climb on heading 096° to 1400 then as assigned for RADAR vectors to cross KZIOV between 4000 and 15000, thence....
TAKEOFF RUNWAY 27: Climb on heading 276° to 1500 then as assigned for RADAR vectors to cross KZIOV between 4000 and 15000, thence....
on track 111° to LIDDS, then on (transition). Maintain ATC assigned altitude, expect filed altitude 10 minutes after departure.

GRIVY TRANSITION (LIDDS2.GRIVY):

NOTE: Chart not to scale.

EC-1, 22 FEB 2024 to 21 MAR 2024