

# BURRO FIVE DEPARTURE (RNAV)

AL-430 (FAA)

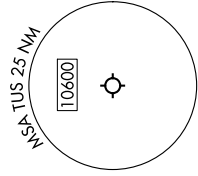
TUCSON INTL (TUS)  
TUCSON, ARIZONA

TUCSON DEP CON  
119.4 318.1  
ATIS  
123.8 279.65  
CLNC DEL  
126.65 326.2  
GND CON  
120.025 348.6  
TUCSON TOWER  
118.3 257.8

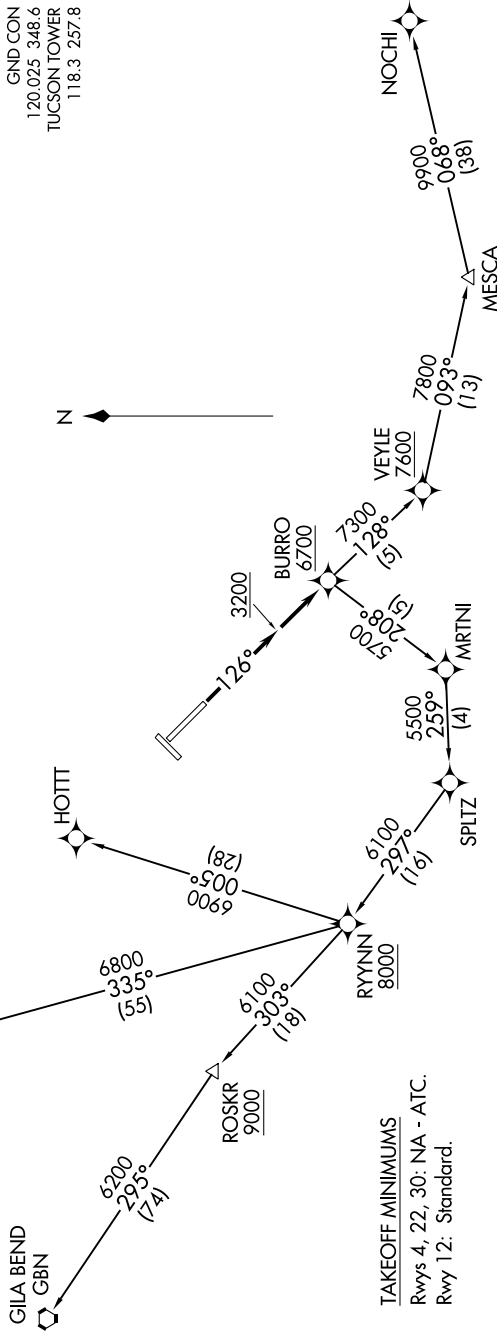
RNAV 1 - GPS.

**TOP ALTITUDE:  
17000**

SW-4, 22 FEB 2024 to 21 MAR 2024



NOTE: Chart not to scale.



TAKEOFF MINIMUMS  
 Rwys 4, 22, 30: NA - ATC.  
 Rwy 12: Standard.

## DEPARTURE ROUTE DESCRIPTION

TAKEOFF RUNWAY 12: Climb heading 126° to 3200, then continue climb direct BURRO, cross BURRO at or above 6700, thence. . . .  
 . . . on assigned transition, maintain 17000, expect filed altitude 10 minutes after departure.

- BBALL TRANSITION (BURRO5.BBALL)
- GILA BEND TRANSITION (BURRO5.GBN)
- HOTTI TRANSITION (BURRO5.HOTTI)
- NOCHI TRANSITION (BURRO5.NOCHI)

# BURRO FIVE DEPARTURE (RNAV)

SW-4, 22 FEB 2024 to 21 MAR 2024