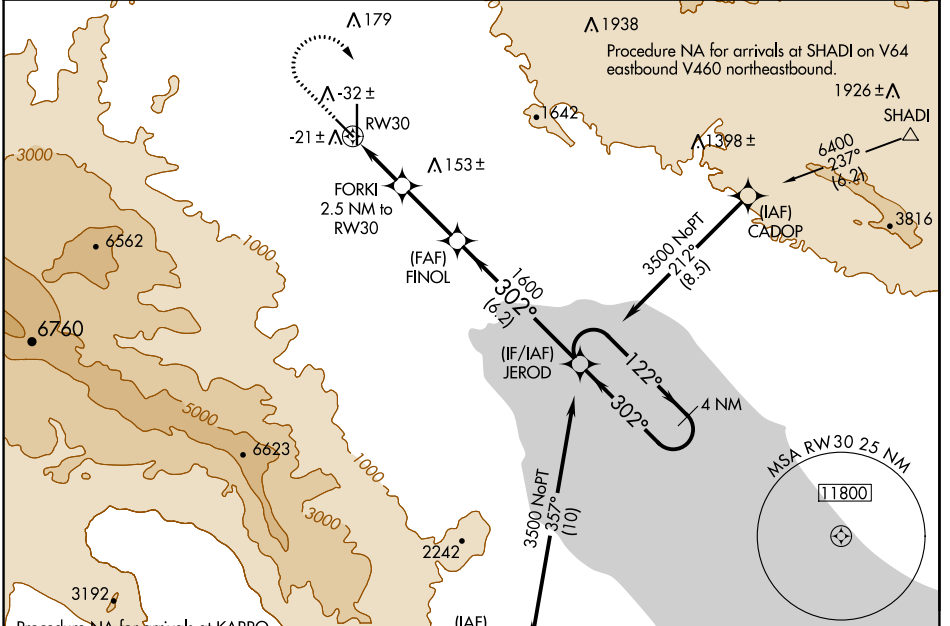


WAAS CH 77941 W30A	APP CRS 302°	Rwy Idg TDZE Apt Elev	4995 -121 -115
--	------------------------	-----------------------------	---

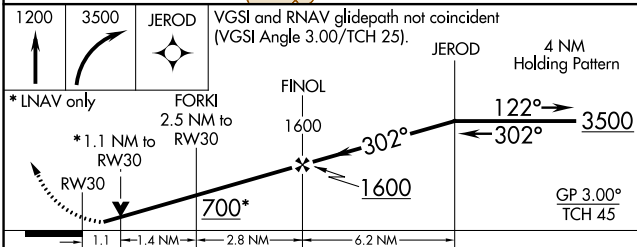
RNAV (GPS) RWY 30

JACQUELINE COCHRAN RGNL (TRM)

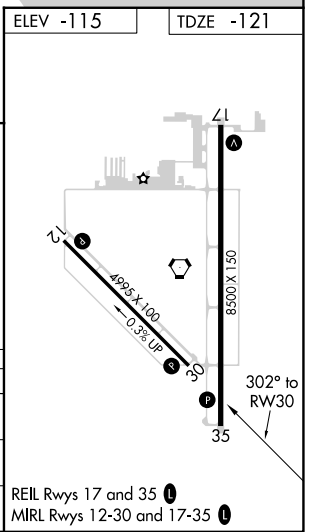
RNP APCH.		MISSED APPROACH: (Do not exceed 230K until JEROD) Climb to 1200 then climbing right turn to 3500 direct JEROD and hold.	
<p>▼ ▲ Rwy 30 helicopter visibility reduction below 3/4 SM NA.</p>		ASOS 118.325	SOCAL APP CON 135.275 251.1
		CLNC DEL 120.225	UNICOM 123.0 (CTAF) 0



Procedure NA for arrivals at KARRO on V460 southwestbound.
Procedure NA for arrivals at SHADI on V64 eastbound V460 northeastbound.



CATEGORY	A	B	C	D
LPV DA	129-3/4 250 (300-3/4)			
RNAV MDA	260-1 381 (400-1)	260-1 1/8 381 (400-1 1/8)		
CIRCLING	320-1 435 (500-1)	340-1 455 (500-1)	460-1 1/2 575 (600-1 1/2)	780-3 895 (900-3)



SW-3, 22 FEB 2024 to 21 MAR 2024

SW-3, 22 FEB 2024 to 21 MAR 2024