

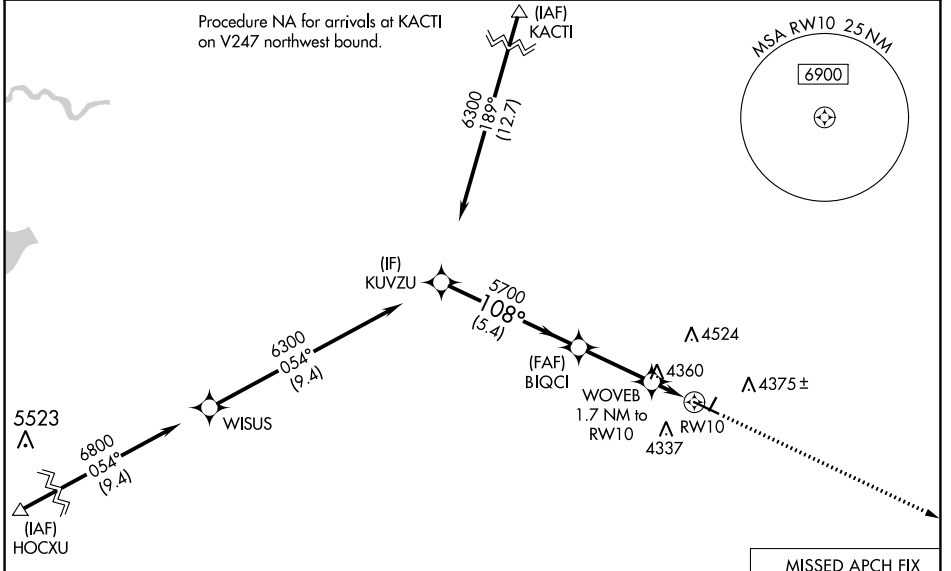
WAAS CH <b>61344</b> W10A	APP CRS <b>108°</b>	Rwy Idg <b>5703</b> TDZE <b>4207</b> Apt Elev <b>4207</b>
---------------------------------	------------------------	---

# RNAV (GPS) RWY 10

TORRINGTON MUNI (TOR)

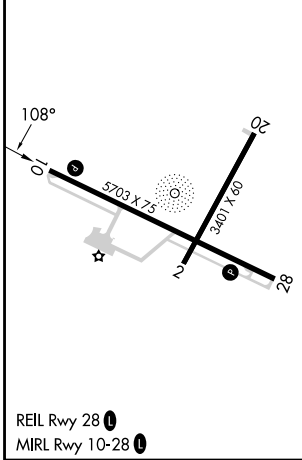
RNP APCH - GPS.	MISSED APPROACH: Climb to 6200 direct CIKSI and hold.
<p>▼ For uncompensated Baro-VNAV systems, LNAV/VNAV NA below -26°C or above 54°C.</p>	

ASOS <b>118.375</b>	DENVER CENTER <b>127.95 338.2</b>	UNICOM <b>122.8 (CTAF) 0</b>
------------------------	--------------------------------------	---------------------------------



Procedure NA for arrivals at HOCXU on V547 southeast bound.

ELEV 4207	TDZE 4207
-----------	-----------



KUVZU 6300 GP 3.00° TCH 40	BIQCI 5700	WOVEB 1.7 NM to RWY10	RWY10	6200	CIKSI
				5.4 NM	2.9 NM
CATEGORY	A	B	C	D	
LPV DA		4457-1	250 (300-1)		
LNAV/VNAV DA		4468-1	261 (300-1)		
LNAV MDA	4660-1	453 (500-1)	4660-1 $\frac{3}{8}$	453 (500-1 $\frac{3}{8}$ )	
CIRCLING	4740-1	533 (600-1)	4880-2 673 (700-2)	4960-2 $\frac{1}{2}$ 753 (800-2 $\frac{1}{2}$ )	

NW-1, 22 FEB 2024 to 21 MAR 2024

NW-1, 22 FEB 2024 to 21 MAR 2024