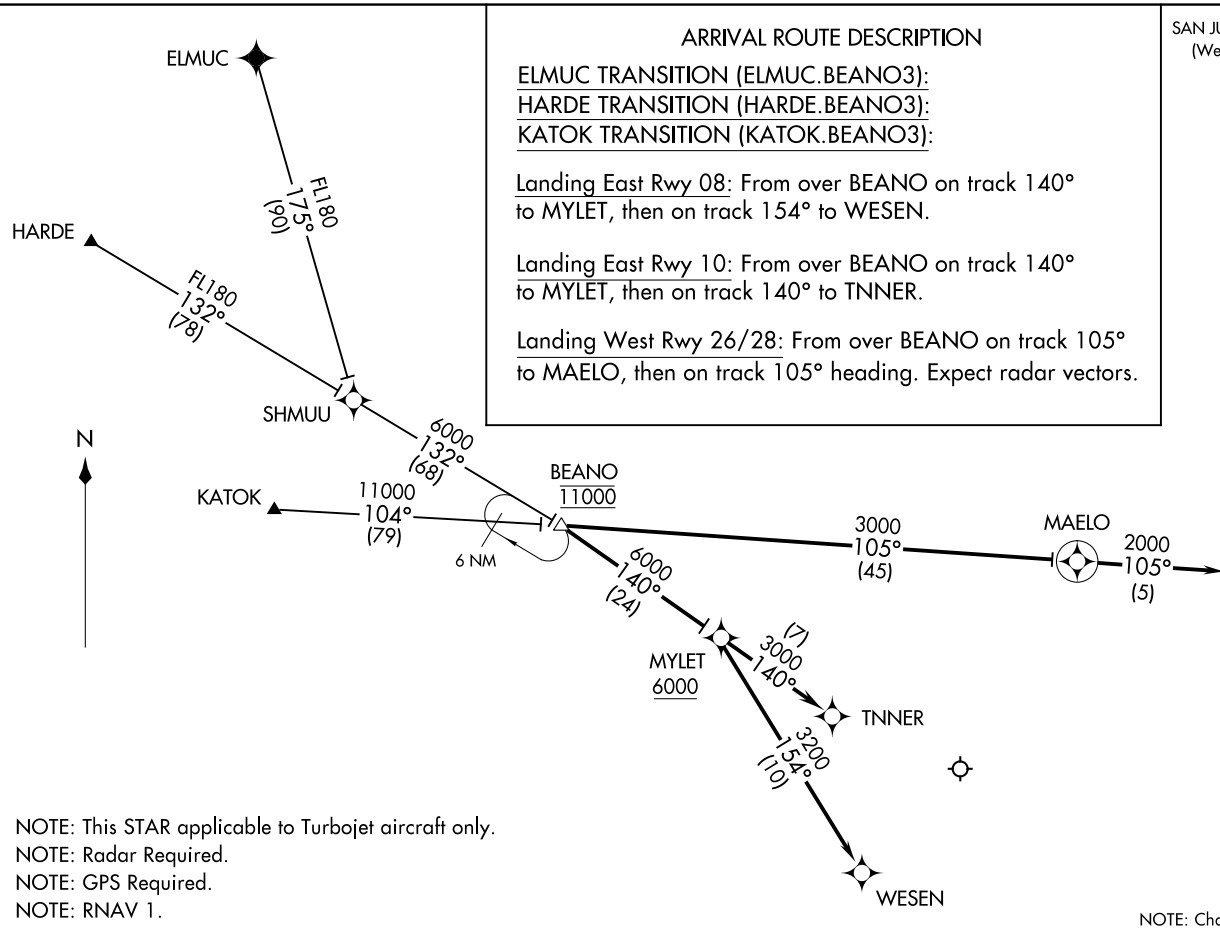


BEANO THREE ARRIVAL (RNAV)  
(BEANO.BEANO3) 18NOV10

SAN JUAN, PUERTO RICO  
LUIS MUNOZ MARIN INTL



**ARRIVAL ROUTE DESCRIPTION**

ELMUC TRANSITION (ELMUC.BEANO3):  
HARDE TRANSITION (HARDE.BEANO3):  
KATOK TRANSITION (KATOK.BEANO3):

Landing East Rwy 08: From over BEANO on track 140° to MYLET, then on track 154° to WESEN.

Landing East Rwy 10: From over BEANO on track 140° to MYLET, then on track 140° to TNNER.

Landing West Rwy 26/28: From over BEANO on track 105° to MAELO, then on track 105° heading. Expect radar vectors.

SAN JUAN APP CON  
(West & Southwest)  
119.4 269.2  
(North & East)  
120.9 290.2  
D-ATIS  
125.8

(BEANO.BEANO3) 17173  
BEANO THREE ARRIVAL (RNAV)

LUIS MUNOZ MARIN INTL  
SAN JUAN, PUERTO RICO

AL-784 (FAA)

NOTE: This STAR applicable to Turbojet aircraft only.  
 NOTE: Radar Required.  
 NOTE: GPS Required.  
 NOTE: RNAV 1.

NOTE: Chart not to scale.

ARRIVAL ROUTE DESCRIPTION

ST MAARTEN TRANSITION (PJM.CHAKA4):

Landing East Rwy 08: From CHAKA on track 279° to REKUA, then on track 260° to WESEN, then on track 347° to WESEN.

Landing East Rwy 10: From CHAKA on track 279° to REKUA, then on track 281° to GARCY, then on track 011° to TNNER.

(CHAKA.CHAKA4) 17173  
CHAKA FOUR ARRIVAL (RNAV)

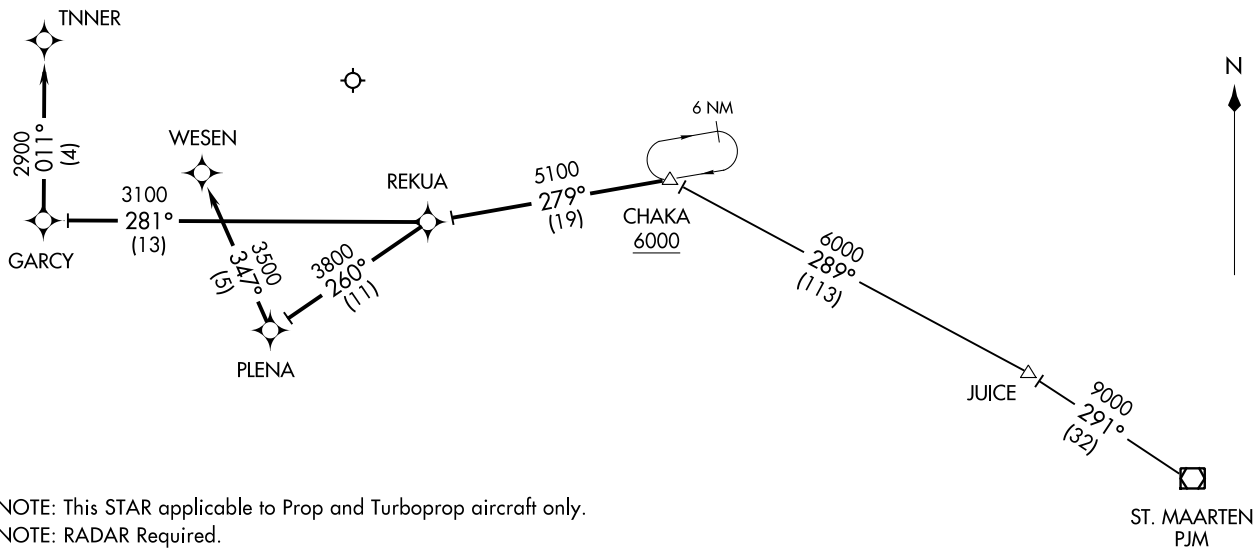
AL-784 (FAA)

LUIS MUNOZ MARIN INTL  
SAN JUAN, PUERTO RICO

SAN JUAN APP CON  
(West & Southwest)  
119.4 269.2  
(North & East)  
120.9 290.2  
D-ATIS  
125.8

CHAKA FOUR ARRIVAL (RNAV)  
(CHAKA.CHAKA4) 13AN11

SAN JUAN, PUERTO RICO  
LUIS MUNOZ MARIN INTL



- NOTE: This STAR applicable to Prop and Turboprop aircraft only.
- NOTE: RADAR Required.
- NOTE: GPS Required.
- NOTE: RNAV 1.

NOTE: Chart not to scale.

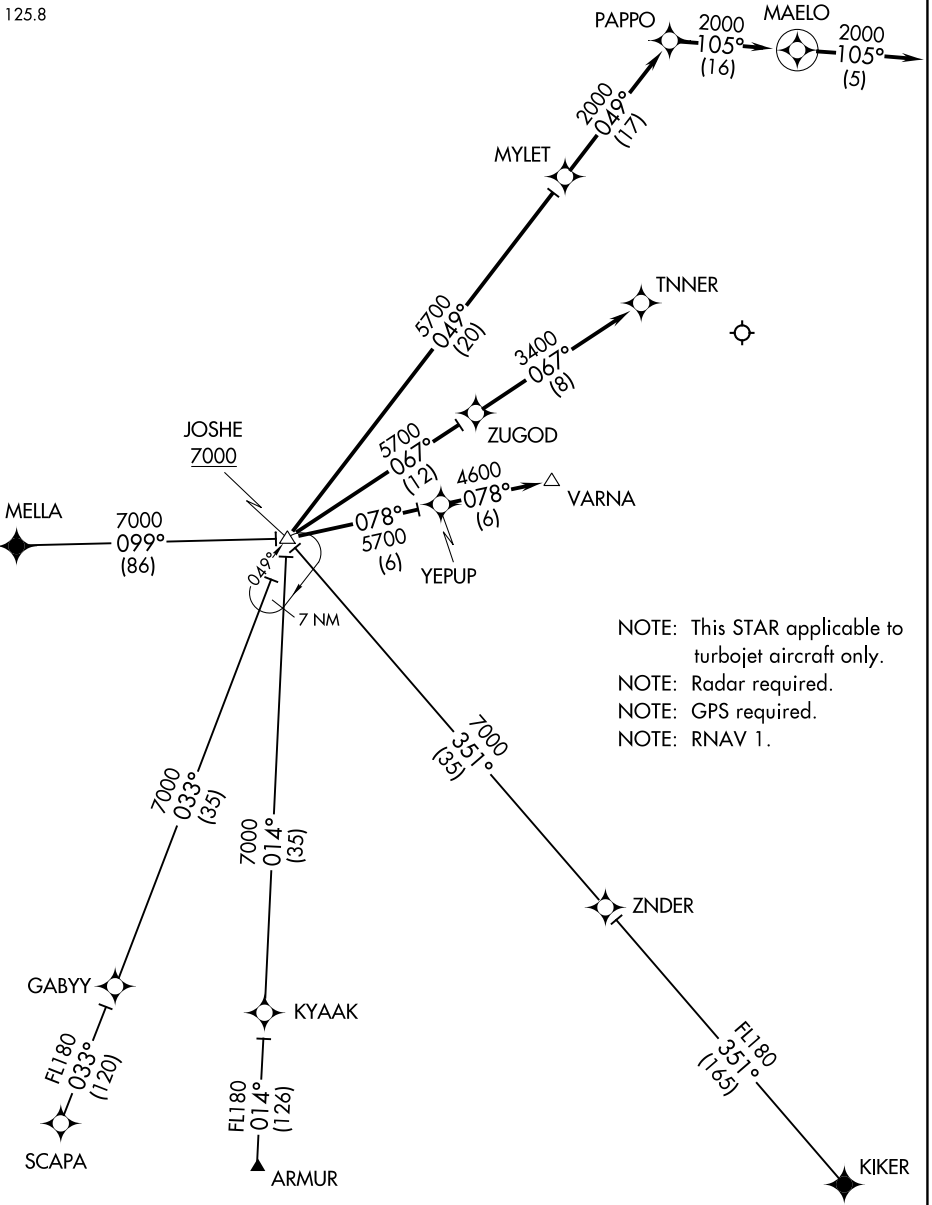
(JOSHE.JOSHE3) 19339

AL-784 (FAA)

LUIS MUNOZ MARIN INTL  
SAN JUAN, PUERTO RICO

# JOSHE THREE ARRIVAL (RNAV)

SAN JUAN APP CON  
119.4 269.2 (WEST & SW)  
120.9 290.2 (NORTH & EAST)  
D-ATIS  
125.8



NOTE: This STAR applicable to turbojet aircraft only.  
 NOTE: Radar required.  
 NOTE: GPS required.  
 NOTE: RNAV 1.

NOTE: Chart not to scale.

(NARRATIVE ON FOLLOWING PAGE)

# JOSHE THREE ARRIVAL (RNAV)

(JOSHE.JOSHE3) 18NOV10

SAN JUAN, PUERTO RICO  
LUIS MUNOZ MARIN INTL

SE-3, 22 FEB 2024 to 21 MAR 2024

SE-3, 22 FEB 2024 to 21 MAR 2024

# JOSHE THREE ARRIVAL (RNAV)

## ARRIVAL ROUTE DESCRIPTION

ARMUR TRANSITION (ARMUR.JOSHE3):

KIKER TRANSITION (KIKER.JOSHE3):

MELLA TRANSITION (MELLA.JOSHE3):

SCAPA TRANSITION (SCAPA.JOSHE3):

LANDING EAST RWY 8: From over JOSHE on track 078° to YEPUP, then on track 078° to VARNA.

LANDING EAST RWY 10: From over JOSHE on track 067° to ZUGOD, then on track 067° track to TNNER.

LANDING WEST RWYS 26/28: From over JOSHE on track 049° to MYLET, then on track 049° to PAPPO, then on track 105° to MAELO, then on heading 105°. Expect RADAR vectors to final approach course.

SE-3, 22 FEB 2024 to 21 MAR 2024

SE-3, 22 FEB 2024 to 21 MAR 2024

(SAALR.SAALR2) 20310

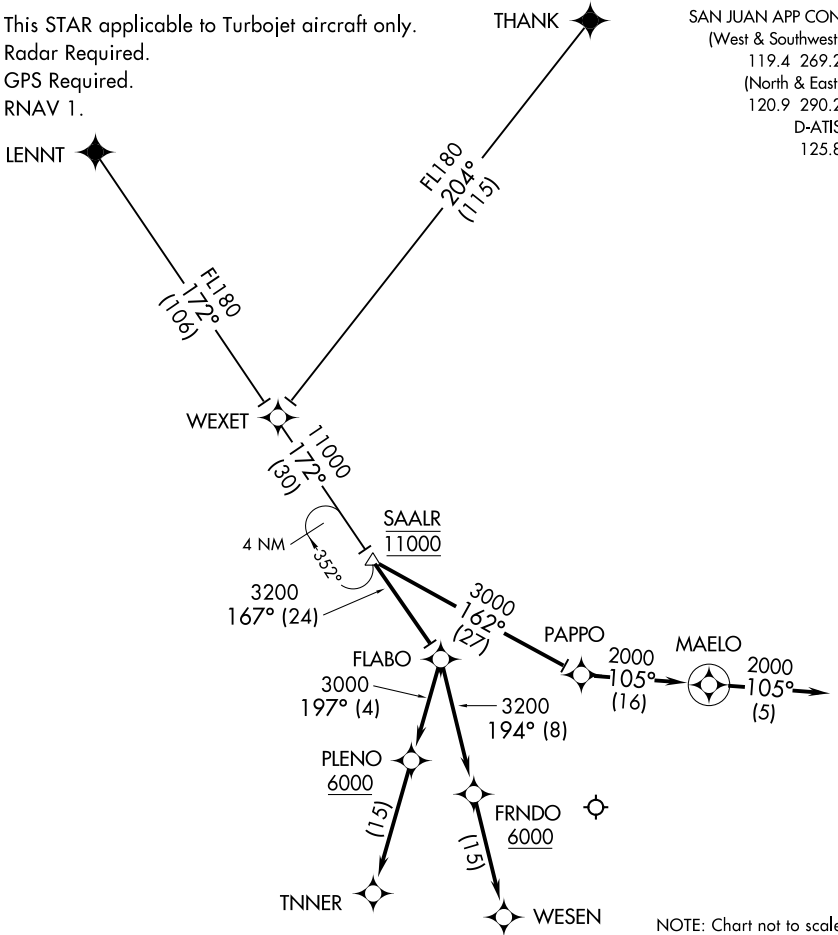
AL-784 (FAA)

LUIS MUNOZ MARIN INTL  
SAN JUAN, PUERTO RICO

# SAALR TWO ARRIVAL (RNAV)

NOTE: This STAR applicable to Turbojet aircraft only.  
NOTE: Radar Required.  
NOTE: GPS Required.  
NOTE: RNAV 1.

SAN JUAN APP CON  
(West & Southwest)  
119.4 269.2  
(North & East)  
120.9 290.2  
D-ATIS  
125.8



NOTE: Chart not to scale.

## ARRIVAL ROUTE DESCRIPTION

LENNT TRANSITION (LENNT.SAALR2):

THANK TRANSITION (THANK.SAALR2):

From WEXET on track 172° to SAALR, then via assigned runway transition.

Landing East Rwy 08: From over SAALR on track 167° to FLABO, then on track 194° to FRNDO, then on track 194° to WESEN.

Landing East Rwy 10: From over SAALR on track 167° to FLABO, then on track 197° to PLENO, then on track 197° to TNNER.

Landing West Rwy 26/28: From over SAALR on track 162° to PAPP0, then on track 105° to MAELO, then on heading 105°. Expect radar vectors to final approach course.

# SAALR TWO ARRIVAL (RNAV)

(SAALR.SAALR2) 23SEP10

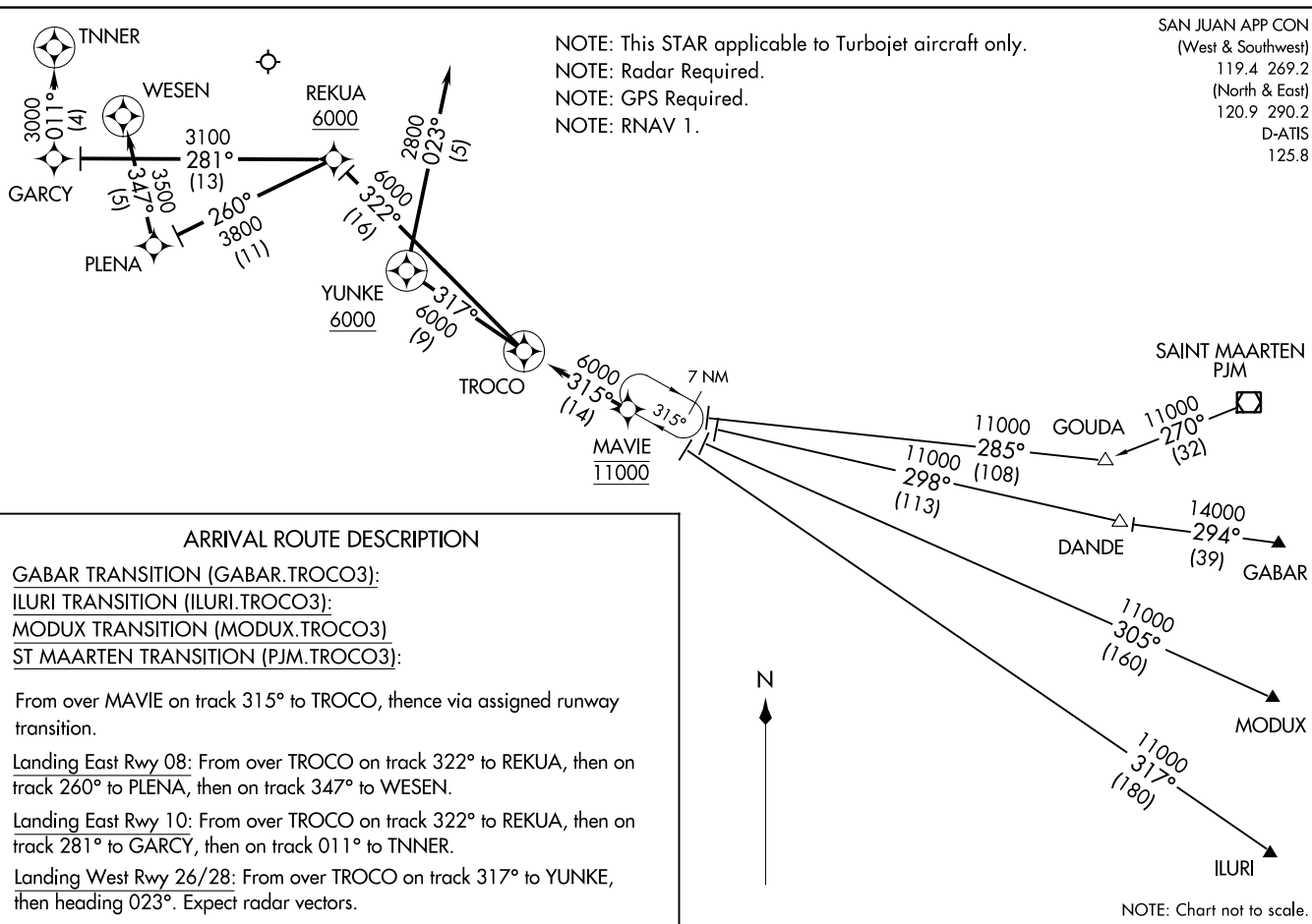
SAN JUAN, PUERTO RICO  
LUIS MUNOZ MARIN INTL

SE-3, 22 FEB 2024 to 21 MAR 2024

SE-3, 22 FEB 2024 to 21 MAR 2024

TROCO THREE ARRIVAL (RNAV)  
(TROCO.TROCO3) 18NOV10

SAN JUAN, PUERTO RICO  
LUIS MUNOZ MARIN INTL



NOTE: This STAR applicable to Turbojet aircraft only.  
NOTE: Radar Required.  
NOTE: GPS Required.  
NOTE: RNAV 1.

SAN JUAN APP CON  
(West & Southwest)  
119.4 269.2  
(North & East)  
120.9 290.2  
D-ATIS  
125.8

**ARRIVAL ROUTE DESCRIPTION**

GABAR TRANSITION (GABAR.TROCO3):

ILURI TRANSITION (ILURI.TROCO3):

MODUX TRANSITION (MODUX.TROCO3)

ST MAARTEN TRANSITION (PJM.TROCO3):

From over MAVIE on track 315° to TROCO, thence via assigned runway transition.

Landing East Rwy 08: From over TROCO on track 322° to REKUA, then on track 260° to PLENA, then on track 347° to WESEN.

Landing East Rwy 10: From over TROCO on track 322° to REKUA, then on track 281° to GARCY, then on track 011° to TNNER.

Landing West Rwy 26/28: From over TROCO on track 317° to YUNKE, then heading 023°. Expect radar vectors.

NOTE: Chart not to scale.

(TROCO.TROCO3) 17173  
TROCO THREE ARRIVAL (RNAV)

AL-784 (FAA)

LUIS MUNOZ MARIN INTL  
SAN JUAN, PUERTO RICO