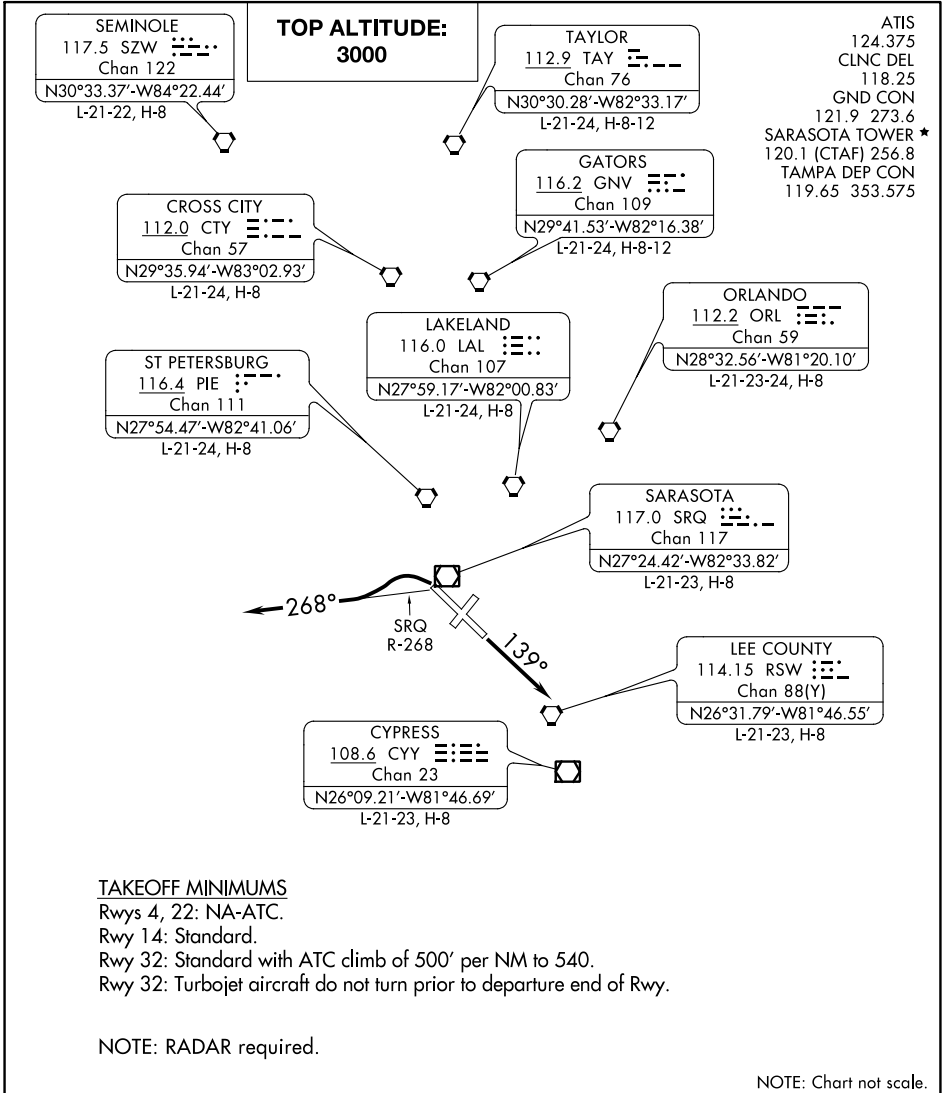


SARASOTA FIVE DEPARTURE

SARASOTA/BRADENTON INTL (SRQ)
SARASOTA (BRADENTON), FLORIDA



TAKEOFF MINIMUMS

Rwys 4, 22: NA-ATC.

Rwy 14: Standard.

Rwy 32: Standard with ATC climb of 500' per NM to 540.

Rwy 32: Turbojet aircraft do not turn prior to departure end of Rwy.

NOTE: RADAR required.

NOTE: Chart not scale.



DEPARTURE ROUTE DESCRIPTION

TAKEOFF RWY 14: Climb heading 139°. Expect RADAR vectors to join assigned route, thence. . . .

TAKEOFF RWY 32: Climbing left turn to intercept SRQ R-268 westbound or as assigned by ATC. Expect RADAR vectors to join assigned route, thence. . . .

. . . .maintain 3000 or as assigned by ATC. Expect clearance to filed altitude ten minutes after departure.