

(LOUPE5.BMRNG) 23334

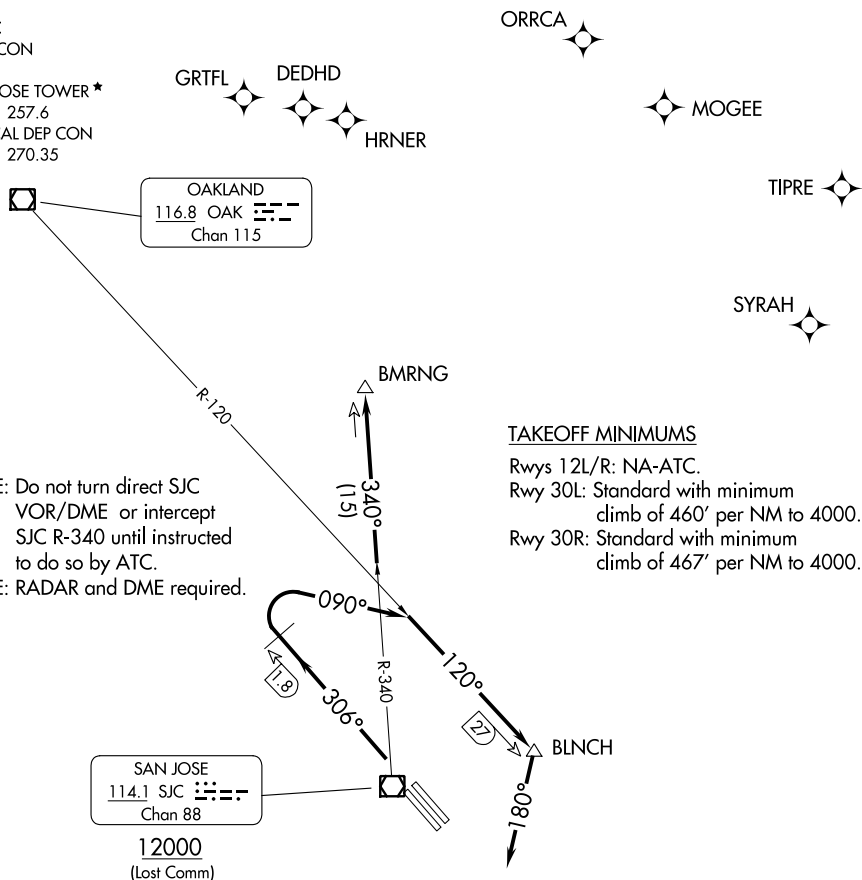
# LOUPE FIVE DEPARTURE

AL-693 (FAA)

NORMAN Y MINETA SAN JOSE INTL (SJC)  
SAN JOSE, CALIFORNIA

D-ATIS  
126.95  
CLNC DEL  
118.0  
CPDLC  
GND CON  
121.7  
SAN JOSE TOWER ★  
124.0 257.6  
NORCAL DEP CON  
121.3 270.35

**TOP ALTITUDE:  
5000**



NOTE: Chart not to scale.



## DEPARTURE ROUTE DESCRIPTION

**TAKEOFF RUNWAYS 30L/R:** Climb heading 306°, at SJC VOR/DME 1.8 DME northwest turn right heading 090° to intercept OAK R-120 to BLNCH, then turn right heading 180° for RADAR vectors to SJC VOR/DME, then on SJC R-340 to BMRNG INT. Maintain 5000, expect filed altitude 10 minutes after departure.

### LOST COMMUNICATIONS

**RUNWAYS 30L/R:** If not in contact with departure control upon reaching BLNCH, depart BLNCH heading 180°. When able turn right direct SJC VOR/DME, cross SJC VOR/DME at or above 12000, then on SJC R-340 to BMRNG INT before proceeding on course.

# LOUPE FIVE DEPARTURE

(LOUPE5.BMRNG) 25APR19

SAN JOSE, CALIFORNIA  
NORMAN Y MINETA SAN JOSE INTL (SJC)

SW-2, 22 FEB 2024 to 21 MAR 2024

SW-2, 22 FEB 2024 to 21 MAR 2024