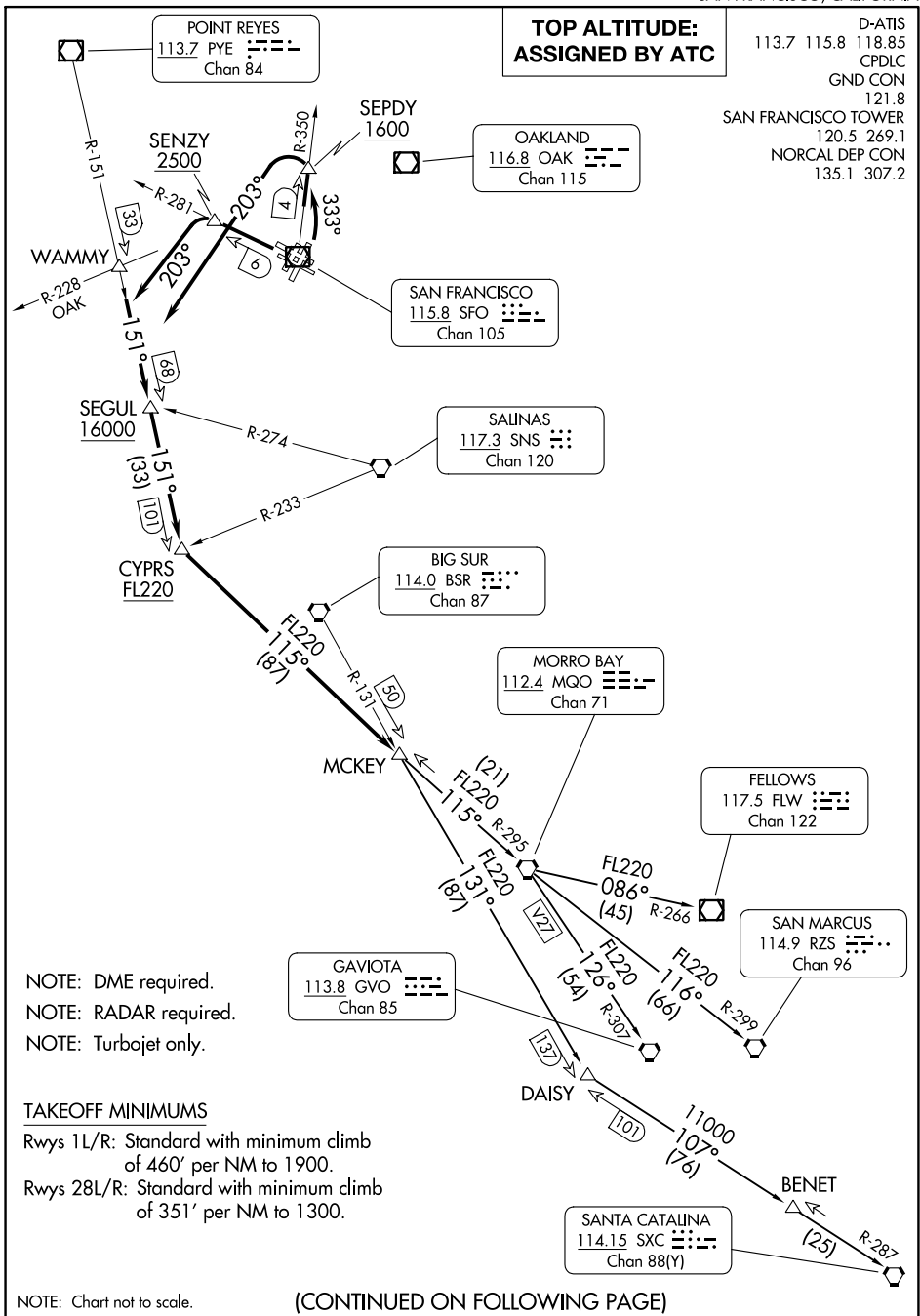


# OFFSHORE TWO DEPARTURE

AL-375 (FAA)

SAN FRANCISCO INTL (SFO)  
SAN FRANCISCO, CALIFORNIA



**TOP ALTITUDE:  
ASSIGNED BY ATC**

D-ATIS  
113.7 115.8 118.85  
CPDLC  
GND CON  
121.8  
SAN FRANCISCO TOWER  
120.5 269.1  
NORCAL DEP CON  
135.1 307.2

POINT REYES  
113.7 PYE  
Chan 84

OAKLAND  
116.8 OAK  
Chan 115

SAN FRANCISCO  
115.8 SFO  
Chan 105

SALINAS  
117.3 SNS  
Chan 120

BIG SUR  
114.0 BSR  
Chan 87

MORRO BAY  
112.4 MQO  
Chan 71

FELLOWS  
117.5 FLW  
Chan 122

SAN MARCUS  
114.9 RZS  
Chan 96

GAVIOTA  
113.8 GVO  
Chan 85

SANTA CATALINA  
114.15 SXC  
Chan 88(Y)

NOTE: DME required.  
NOTE: RADAR required.  
NOTE: Turbojet only.

### TAKEOFF MINIMUMS

Rwys 11L/R: Standard with minimum climb  
of 460' per NM to 1900.  
Rwys 28L/R: Standard with minimum climb  
of 351' per NM to 1300.

NOTE: Chart not to scale.

(CONTINUED ON FOLLOWING PAGE)

# OFFSHORE TWO DEPARTURE

SAN FRANCISCO, CALIFORNIA  
SAN FRANCISCO INTL (SFO)

SW-2, 22 FEB 2024 to 21 MAR 2024



DEPARTURE ROUTE DESCRIPTION

TAKEOFF RUNWAYS 1L/R: Climbing left turn heading 333° to intercept SFO VOR/DME R-350 to cross SEPDY INT/SFO VOR/DME 4 DME at or above 1600. Thence . . .

TAKEOFF RUNWAYS 28L/R: Climb on SFO VOR/DME R-281 to cross SENZY INT/SFO VOR/DME 6 DME at or above 2500. Thence . . .

. . . climbing left turn heading 203° to intercept PYE R-151 to cross SEGUL INT/PYE 68 DME at or above 16000, then on PYE R-151 to cross CYPRS INT/PYE 101 DME at or above FL220. Then on MQO R-295 to MCKEY INT/MQO 21 DME, then on assigned (transition). Maintain ATC assigned altitude. Expect filed altitude 10 minutes after departure.

FELLOWS TRANSITION (OFFSH2.FLW): From over MCKEY INT on MQO R-295 to MQO VORTAC, then on MQO R-086 and FLW R-266 to FLW VOR/DME.

GAVIOTA TRANSITION (OFFSH2.GVO): From over MCKEY INT on MQO R-295 to MQO VORTAC, then on MQO R-126 and GVO R-307 to GVO VORTAC.

SAN MARCUS TRANSITION (OFFSH2.RZS): From over MCKEY INT on MQO R-295 to MQO VORTAC, then on MQO R-116 and RZS R-299 to RZS VORTAC.

SANTA CATALINA TRANSITION (OFFSH2.SXC): From over MCKEY INT on BSR R-131 to DAISY INT then on SXC R-287 to SXC VORTAC.

SW-2, 22 FEB 2024 to 21 MAR 2024

SW-2, 22 FEB 2024 to 21 MAR 2024