

APP CRS <b>089°</b>	Rwy Idg <b>5342</b>
	TDZE <b>379</b>
	Apt Elev <b>388</b>

# RNAV (GPS) RWY 9L

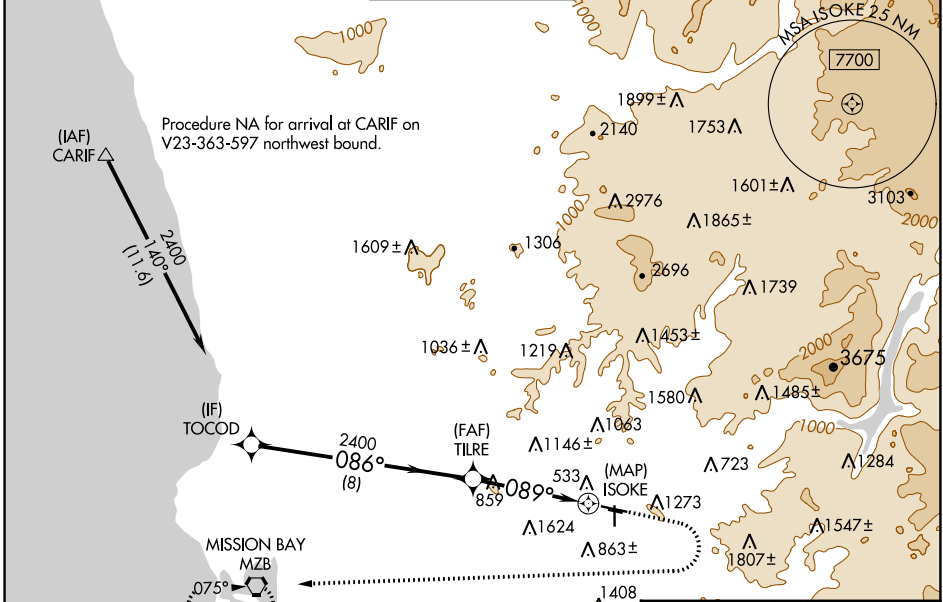
GILLESPIE FLD (SEE)

RNP APCH - GPS.

**⚠** For uncompensated Baro-VNAV systems, LNAV/VNAV NA below 5°C or above 14°C. Circling NA northeast of Rwy 17 and 27R. Circling Rwy 27R, 35 NA at night. Rwy 9L helicopter visibility reduction below 1 SM NA.

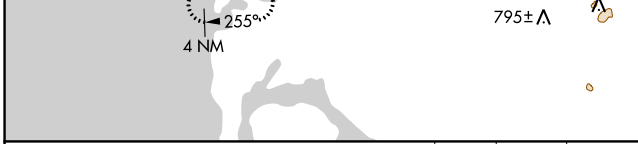
**MISSED APPROACH:** Climb to 1900 then climbing right turn to 2700 direct MZB VORTAC and hold.

ATIS <b>125.45</b>	SOCAL APP CON <b>124.35 279.625</b>	GILLESPIE TOWER* <b>120.7 (CTAF) 257.8</b>	GND CON <b>121.7</b>	CLNC DEL <b>125.1</b>
-----------------------	--	---	-------------------------	--------------------------

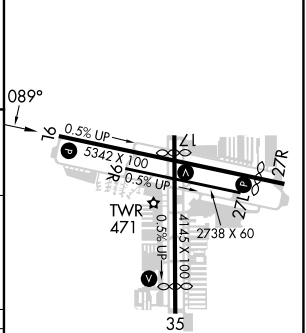
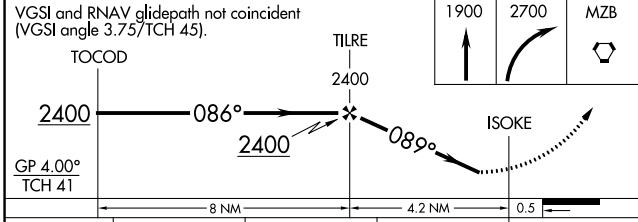


SW-3, 22 FEB 2024 to 21 MAR 2024

SW-3, 22 FEB 2024 to 21 MAR 2024



ELEV 388	TDZE 379
----------	----------



CATEGORY	A	B	C	D
LNAV/VNAV DA	1350-3	971 (1000-3)		NA
LNAV MDA	1720-1¼ 1341 (1400-1¼)	1720-1½ 1341 (1400-1½)		NA
CIRCLING	1720-1¼ 1332 (1400-1¼)	1720-1½ 1332 (1400-1½)		NA

MIRL Rwy 9L-27R and 17-35  
REIL Rwy 27R