

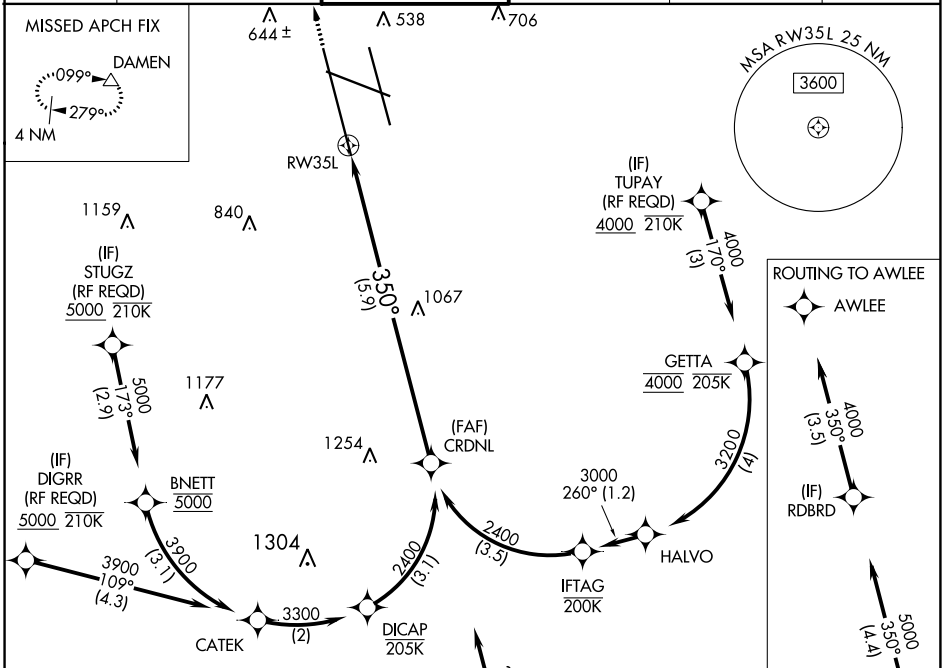
APP CRS	Rwy Idg	10000
350°	TDZE	464
	Apt Elev	501

RNAV (RNP) Z RWY 35L

LOUISVILLE MUHAMMAD ALI INTL (SDF)

RNP AR APCH.	<p>For uncompensated Baro-VNAV systems, procedure NA below -14°C or above 54°C. Simultaneous approach authorized, except for arrivals at STUGZ, DIGRR, and TUPAY.</p>	<p>ALSF-2</p>	<p>MISSED APPROACH: Climb to 1000 then climbing left turn to 3000 direct DAMEN and hold.</p>
--------------	---	---------------	--

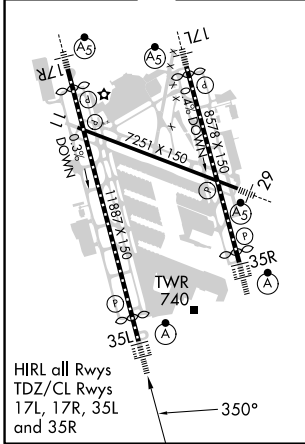
D-ATIS	LOUISVILLE APP CON	LOUISVILLE TOWER	GND CON	CLNC DEL	CPDLC
118.725	132.075 327.0	124.2 257.8	121.7 348.6	126.1 275.8	



SE-1, 22 FEB 2024 to 21 MAR 2024

SE-1, 22 FEB 2024 to 21 MAR 2024

ELEV 501	D	TDZE 464
----------	----------	----------



ROUTING TO AWLEE

AWLEE
 (IF) RDBRD
 (IAF) BRBRD

Procedure NA for arrivals at BRBRD on V5-513 southbound.

SEE INSET FOR ROUTING TO AWLEE

DAMEN
 VGSI and RNAV glidepath not coincident (VGSI Angle 3.00/TCH 75).

CRDNL 2400
 GP 3.00° TCH 59

1000	3000		

5.9 NM

CATEGORY	A	B	C	D
RNP 0.12 DA		874/45	410 (400-%)	
RNP 0.30 DA		914/50	450 (500-1)	

AUTHORIZATION REQUIRED