

WAAS CH <b>60936</b> <b>W11A</b>	APP CRS <b>093°</b>	Rwy Idg TDZE Apt Elev	<b>5405</b> <b>3246</b> <b>3251</b>
--	------------------------	-----------------------------	---

# RNAV (GPS) RWY 11

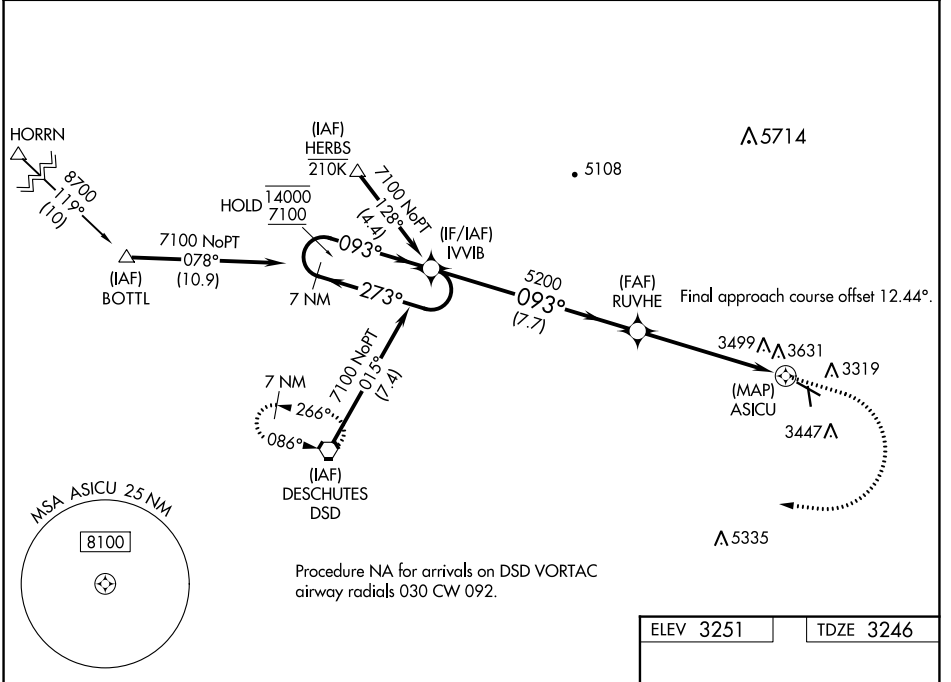
PRINEVILLE (S39)

RNP APCH-GPS.

**⚠** Circling NA for Cat D south of Rwy 11-29.  
**⚠** Rwy 11 helicopter visibility reduction below 3/4 SM NA.  
 Circling Rwy 15 NA at night.

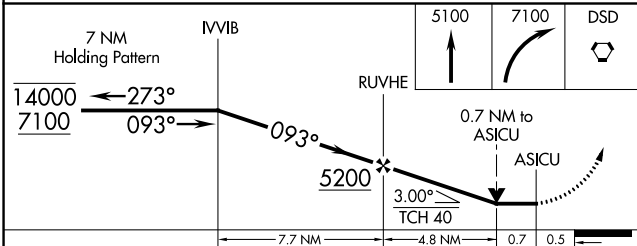
MISSED APPROACH: Climb to 5100 then climbing right turn to 7100 direct DSD VORTAC and hold.  
 \*Missed approach requires minimum climb of 215 feet per NM to 5400.

AWOS-3PT <b>118.325</b>	SEATTLE CENTER <b>126.15 269.475</b>	UNICOM <b>122.7 (CTAF) 0</b>
----------------------------	---	---------------------------------



NW-1, 22 FEB 2024 to 21 MAR 2024

NW-1, 22 FEB 2024 to 21 MAR 2024



ELEV 3251	TDZE 3246
-----------	-----------

CATEGORY	A	B	C	D
LP MDA*	3660-1 414 (500-1)		3660-1 1/8 414 (500-1 1/8)	
LP MDA	3760-1 514 (600-1)		3760-1 3/8 514 (600-1 3/8)	
LNAV MDA	3900-1 654 (700-1)		3900-1 7/8 654 (700-1 7/8)	
<b>C</b> CIRCLING	3960-1 709 (800-1)	4040-1 789 (800-1)	4040-2 1/4 789 (800-2 1/4)	4040-2 1/2 789 (800-2 1/2)

MIRL Rwy 11-29 **0**  
 LIRL Rwy 15-33 **0**