

WAAS CH <b>82425</b> <b>W14A</b>	APP CRS <b>141°</b>	Rwy ldg TDZE Apt Elev	<b>5507</b> <b>998</b> <b>998</b>
----------------------------------------	------------------------	-----------------------------	-----------------------------------------

# RNAV (GPS) RWY 14

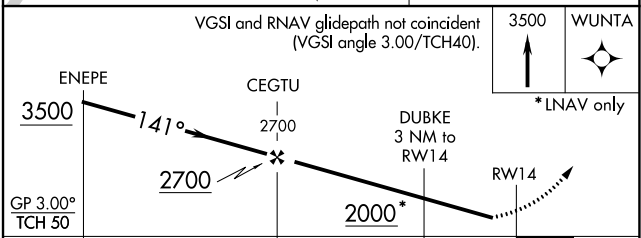
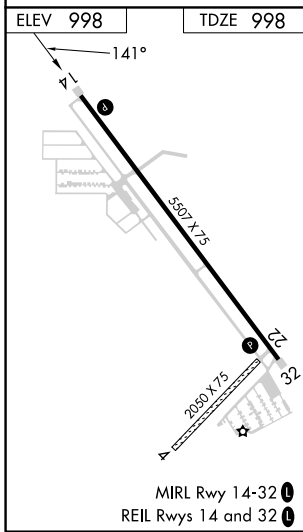
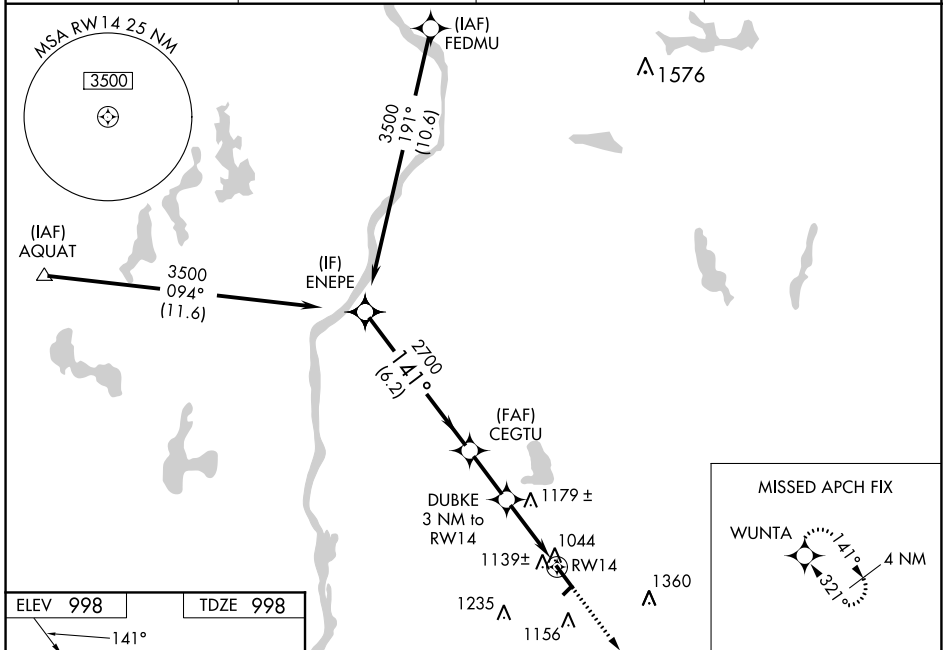
NEW RICHMOND RGNL (R.NH)

RNP APCH.

**⚠** Baro-VNAV NA when using Osceola altimeter setting. For uncompensated Baro-VNAV systems, LNAV/VNAV NA below -16°C (4°F) or above 37°C (98°F). Rwy 14 helicopter visibility reduction below ¾ SM NA. When local altimeter setting not received, use Osceola altimeter setting and increase all DA/MDA 40 feet; Circling visibility Cats C and D ¼ SM.

MISSED APPROACH: Climb to 3500 direct WUNTA and hold.

AWOS-3 <b>120.0</b>	MINNEAPOLIS APP CON <b>121.2 335.65</b>	GCO <b>121.725</b>	UNICOM <b>122.975 (CTAF) 0</b>
------------------------	--------------------------------------------	-----------------------	-----------------------------------



CATEGORY	A	B	C	D
LPV DA		1272-1	274 (300-1)	
LNAV/VNAV DA		1320-1	322 (400-1)	
LNAV MDA	1440-1	442 (500-1)	1440-1¾	442 (500-1¾)
<b>C</b> CIRCLING	1540-1	542 (600-1)	1660-1¾ 662 (700-1¾)	1660-2 662 (700-2)

EC-3, 22 FEB 2024 to 21 MAR 2024

EC-3, 22 FEB 2024 to 21 MAR 2024