


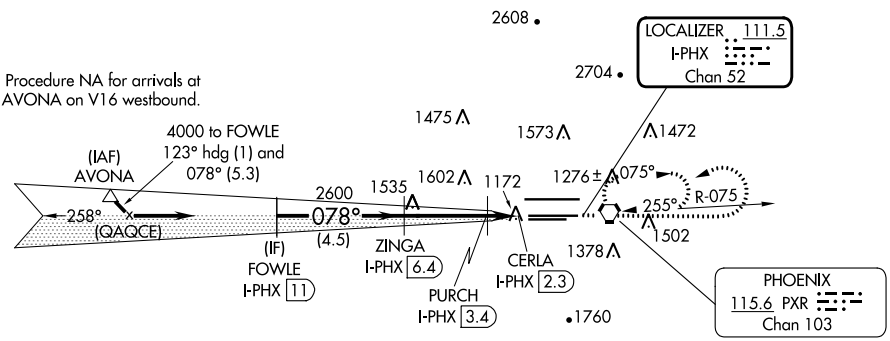
LOC/DME I-PHX <b>111.5</b> Chan <b>52</b>	APP CRS <b>078°</b>	Rwy Idg <b>10300</b> TDZE <b>1116</b> Apt Elev <b>1135</b>
---	------------------------	--

# ILS or LOC/DME RWY 7L

PHOENIX SKY HARBOR INTL (PHX)

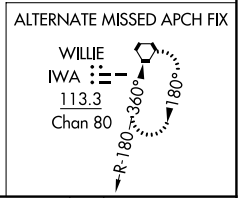
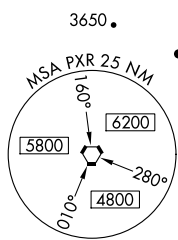
D-ATIS <b>127.575</b>	PHOENIX APP CON <b>128.65 353.9</b>	PHOENIX TOWER <b>118.7 278.8</b> (Rwy 8-26) <b>120.9 254.3</b> (Rwy 7L-25R, 7R-25L)	GND CON <b>119.75 269.2</b> (N) <b>132.55 269.2</b> (S)	CLNC DEL <b>118.1 269.2</b>	CPDLC
		<p>For inoperative ALS, increase S-LOC 7L Cats C/D visibility to RVR 5500.</p> <p>MALSR </p> <p>MISSED APPROACH: Climb to 5000 then left turn direct PXR VORTAC and hold.</p>			

## DME REQUIRED

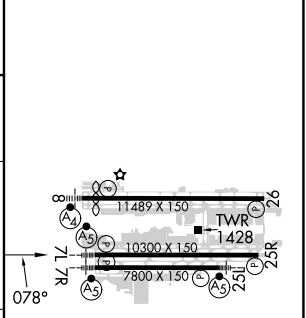
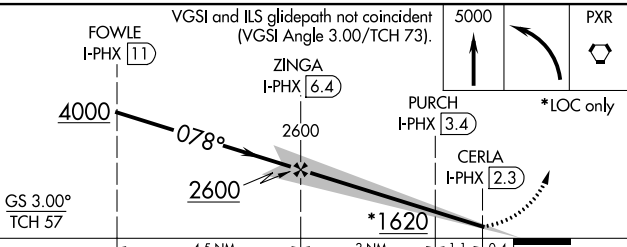


SW-4, 22 FEB 2024 to 21 MAR 2024

SW-4, 22 FEB 2024 to 21 MAR 2024



ELEV 1135	<b>D</b> TDZE 1116
-----------	--------------------



CATEGORY	A	B	C	D
S-ILS 7L	1326/24		210 (200-1/2)	
S-LOC 7L	1460/24	344 (400-1/2)	1460/30	344 (400-5/8)
<b>C</b> CIRCLING	1740-1	605 (700-1)	2040-2 3/4 905 (1000-2 3/4)	2560-3 1425 (1500-3)

HIRL Rwy 8-26, 7L-25R and 7R-25L  
REIL Rwy 26