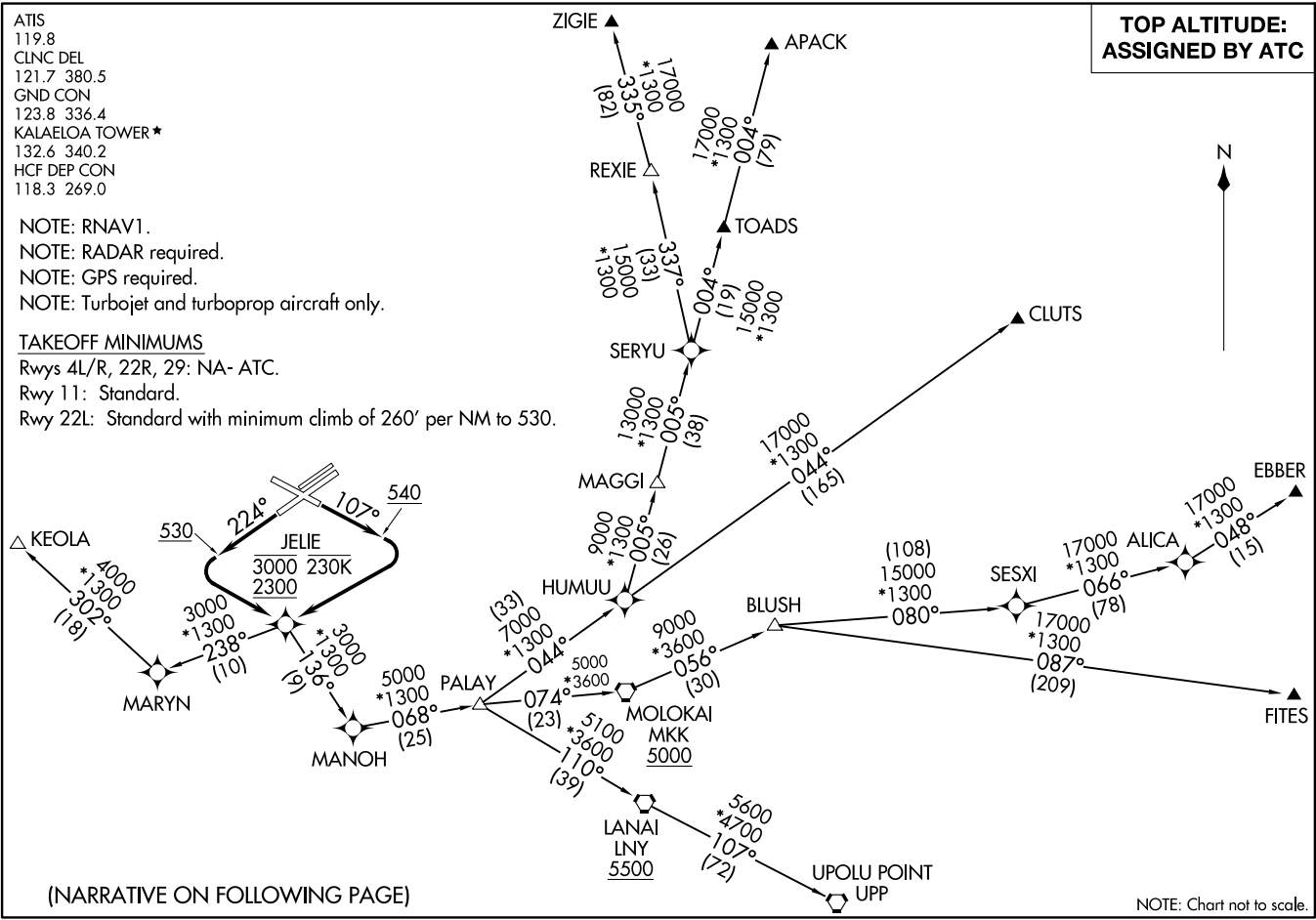


**TOP ALTITUDE:
 ASSIGNED BY ATC**

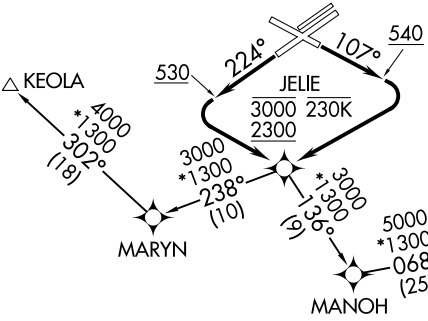


ATIS
 119.8
 CLNC DEL
 121.7 380.5
 GND CON
 123.8 336.4
 KALAELIOA TOWER*
 132.6 340.2
 HCF DEP CON
 118.3 269.0

NOTE: RNAV1.
 NOTE: RADAR required.
 NOTE: GPS required.
 NOTE: Turbojet and turboprop aircraft only.

TAKEOFF MINIMUMS

Rwys 4L/R, 22R, 29: NA- ATC.
 Rwy 11: Standard.
 Rwy 22L: Standard with minimum climb of 260' per NM to 530.



(NARRATIVE ON FOLLOWING PAGE)

NOTE: Chart not to scale.



DEPARTURE ROUTE DESCRIPTION

TAKEOFF RUNWAY 11: Climb on heading 107° to 540, then climbing right turn direct JELIE. Cross JELIE between 2300 and 3000, at or below 230K, thence. . . .

TAKEOFF RUNWAY 22L: Climb on heading 224° to 530, then climbing left turn direct JELIE. Cross JELIE between 2300 and 3000, at or below 230K, thence. . . .

. . . (transition), maintain ATC assigned altitude. Expect filed altitude 10 minutes after departure.

APACK TRANSITION (JELIE1 .APACK)

CLUTS TRANSITION (JELIE1 .CLUTS)

EBBER TRANSITION (JELIE1 .EBBER)

FITES TRANSITION (JELIE1 .FITES)

KEOLA TRANSITION (JELIE1 .KEOLA)

MOLOKAI TRANSITION (JELIE1 .MKK)

UPOLU POINT TRANSITION (JELIE1 .UPP)

ZIGIE TRANSITION (JELIE1 .ZIGIE)

PAC: 14 JUL 2022 to 08 SEP 2022

PAC: 14 JUL 2022 to 08 SEP 2022