

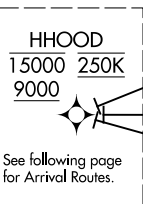
HHOOD FOUR ARRIVAL (RNAV) Transition Routes  
(HHOOD.HHOOD4) 07DEC17

HHOOD.HHOOD4) 17341  
HHOOD FOUR ARRIVAL (RNAV) Transition Routes  
AL-330 (FAA)

PORTLAND INTL (PDX)  
PORTLAND, OREGON

PORTLAND, OREGON  
PORTLAND INTL (PDX)

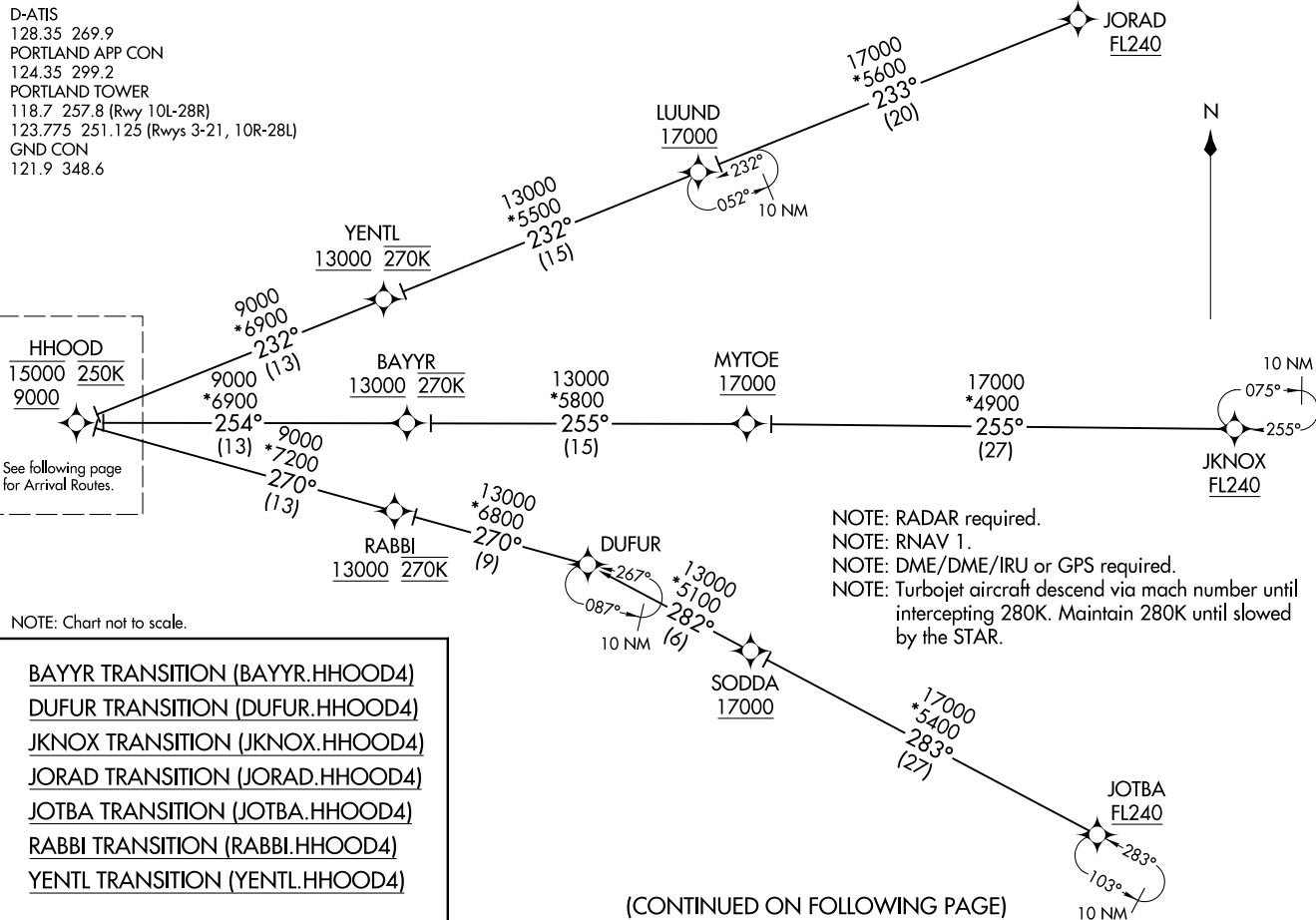
D-ATIS  
128.35 269.9  
PORTLAND APP CON  
124.35 299.2  
PORTLAND TOWER  
118.7 257.8 (Rwy 10L-28R)  
123.775 251.125 (Rwys 3-21, 10R-28L)  
GND CON  
121.9 348.6



NOTE: Chart not to scale.

- BAYYR TRANSITION (BAYYR.HHOOD4)
- DUFUR TRANSITION (DUFUR.HHOOD4)
- JKNOX TRANSITION (JKNOX.HHOOD4)
- JORAD TRANSITION (JORAD.HHOOD4)
- JOTBA TRANSITION (JOTBA.HHOOD4)
- RABBI TRANSITION (RABBI.HHOOD4)
- YENTL TRANSITION (YENTL.HHOOD4)

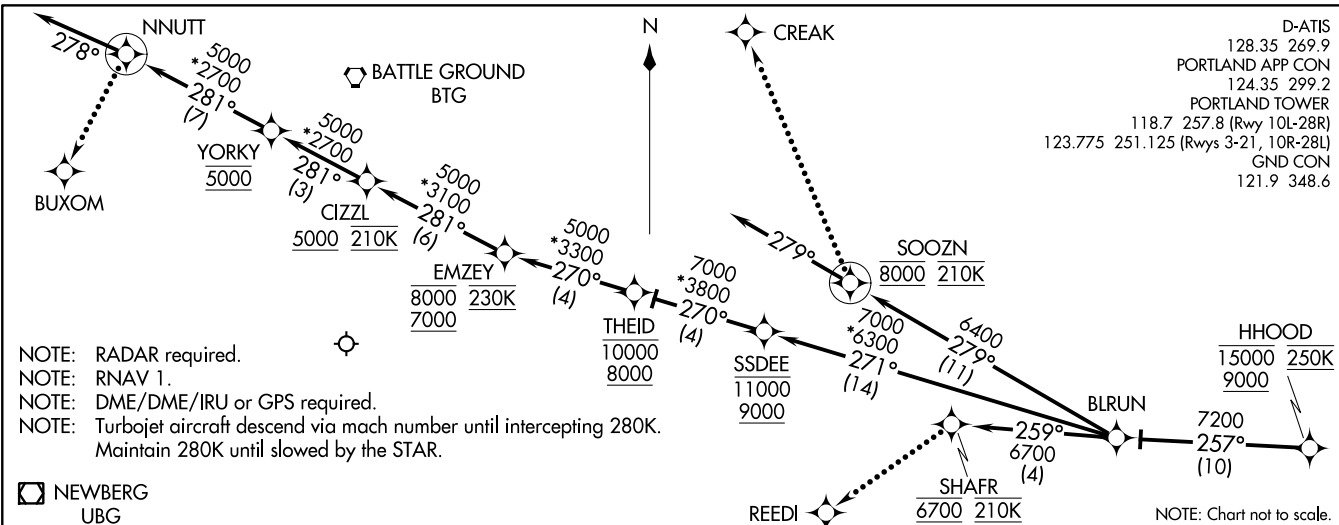
(CONTINUED ON FOLLOWING PAGE)



NOTE: RADAR required.  
 NOTE: RNAV 1.  
 NOTE: DME/DME/IRU or GPS required.  
 NOTE: Turbojet aircraft descend via mach number until intercepting 280K. Maintain 280K until slowed by the STAR.

HHOOD FOUR ARRIVAL (RNAV) Arrival Routes  
(HHOOD.HHOOD4) 07DEC17

PORTLAND OREGON  
PORTLAND INTL (PDX)



D-ATIS  
128.35 269.9  
PORTLAND APP CON  
124.35 299.2  
PORTLAND TOWER  
118.7 257.8 (Rwy 10L-28R)  
123.775 251.125 (Rwys 3-21, 10R-28L)  
GND CON  
121.9 348.6

(HHOOD.HHOOD4) 18200  
HHOOD FOUR ARRIVAL (RNAV) Arrival Routes  
AL-330 (FAA)

PORTLAND INTL (PDX)  
PORTLAND OREGON

ARRIVAL ROUTE DESCRIPTION

From HHOOD on track 257° to BLRUN, thence . . .

LANDING RUNWAYS 10L/R: From BLRUN on track 271° to cross SSDEE between 9000 and 11000, then on track 270° to cross THEID between 8000 and 10000, then on track 270° to cross EMZEY between 7000 and 8000 and at 230K, then on track 281° to cross CIZZL at or above 5000 and at 210K, then on track 281° to cross YORKY at 5000, then on track 281° to NNUTT, then on track 278°. Expect RADAR vectors to final approach course.

LANDING RUNWAY 21: From BLRUN on track 279° to cross SOOZN at 8000 and at 210K, then on track 279°. Expect RADAR vectors to final approach course.

LANDING RUNWAYS 28L/R: From BLRUN on track 259° to cross SHAFR at 6700 and at 210K. Expect RNAV (RNP)/ILS/VISUAL approach as assigned by ATC.

LOST COMMUNICATIONS

LANDING RUNWAY 10: At NNUTT, turn left direct to BUXOM and execute ILS RWY 10L approach.

LANDING RUNWAY 21: At SOOZN turn right direct to CREAK and execute LOC/DME RWY 21 approach.

LANDING RUNWAY 28: At SHAFR, turn left direct to REEDI and execute ILS RWY 28R approach.