

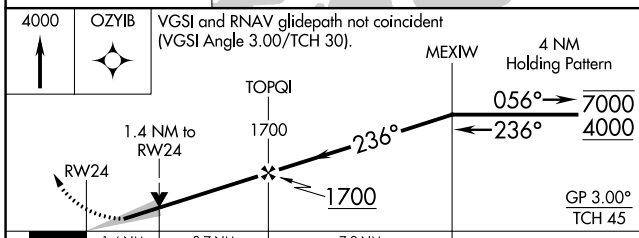
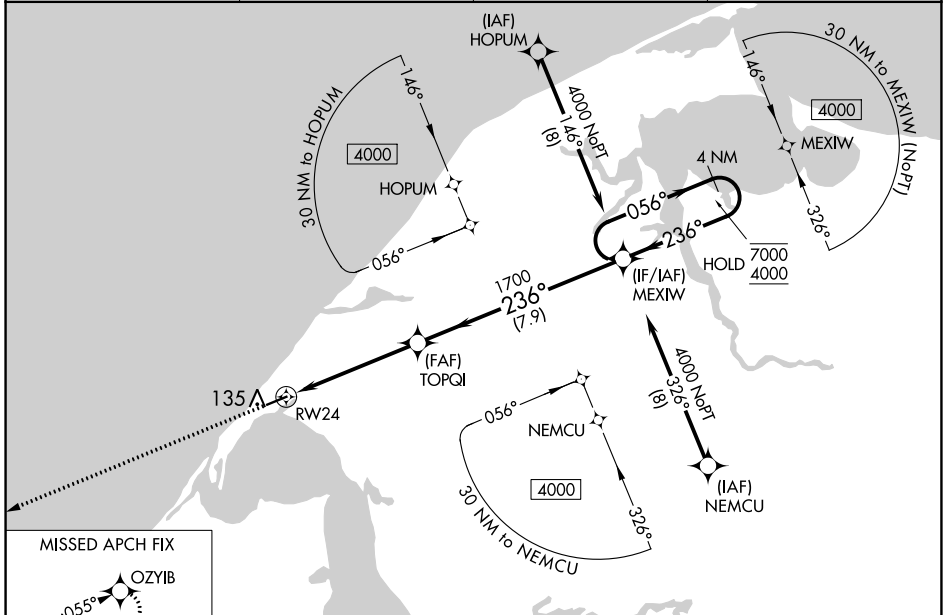
WAAS CH <b>56642</b> <b>W24A</b>	APP CRS <b>236°</b>	Rwy Idg <b>4494</b> TDZE <b>45</b> Apt Elev <b>45</b>
--	------------------------	---

# RNAV (GPS) RWY 24

WAINWRIGHT (AWI) (PAWI)

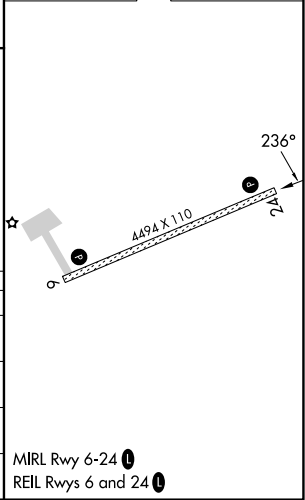
RNP APCH - GPS.		MISSED APPROACH: Climb to 4000 direct OZYIB and hold, continue climb-in-hold to 4000	
For uncompensated Baro-VNAV systems, LNAV/VNAV NA below -20°C or above 54°C.			

ASOS-3 <b>132.25</b>	ANCHORAGE CENTER <b>135.3 239.25</b>	BARROW RADIO <b>122.5</b>	CTAF <b>122.8</b>
-------------------------	---	------------------------------	----------------------



ELEV 45	TDZE 45
---------	---------

CATEGORY	A	B	C	D
LPV DA		295-1	250 (300-1)	
LNAV/VNAV DA		295-1	250 (300-1)	
LNAV MDA	520-1	475 (500-1)	520-1 $\frac{3}{8}$	475 (500-1 $\frac{3}{8}$ )
CIRCLING	520-1	475 (500-1)	520-1 $\frac{1}{2}$ 475 (500-1 $\frac{1}{2}$ )	600-2 555 (600-2)



AK, 25 JAN 2024 to 21 MAR 2024

AK, 25 JAN 2024 to 21 MAR 2024

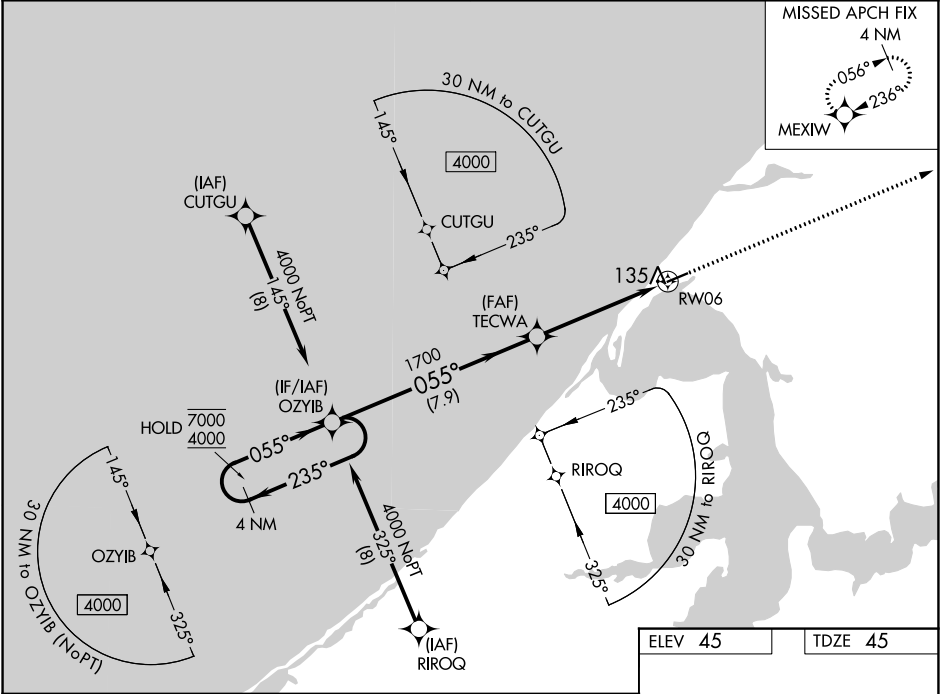
WAAS CH <b>50542</b> <b>W06A</b>	APP CRS <b>055°</b>	Rwy Idg TDZE Apt Elev	<b>4494</b> <b>45</b> <b>45</b>
--	------------------------	-----------------------------	---------------------------------------

# RNAV (GPS) RWY 6

WAINWRIGHT (AWI) (PAWI)

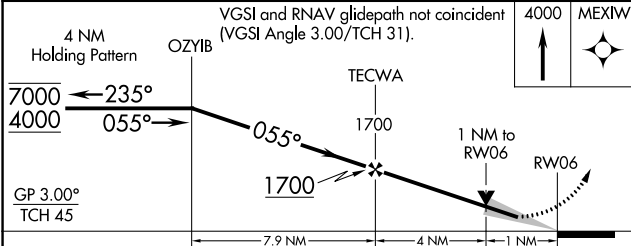
RNP APCH - GPS.		MISSED APPROACH: Climb to 4000 direct MEXIW and hold, continue climb-in-hold to 4000.
For un-compensated Baro-VNAV systems, LNAV/VNAV NA below -20°C or above 54°C.		

ASOS-3 <b>132.25</b>	ANCHORAGE CENTER <b>135.3 239.25</b>	BARROW RADIO <b>122.5</b>	CTAF <b>122.8</b>
-------------------------	---	------------------------------	----------------------



AK, 25 JAN 2024 to 21 MAR 2024

AK, 25 JAN 2024 to 21 MAR 2024



ELEV 45	TDZE 45
---------	---------

CATEGORY	A	B	C	D
LPV DA		295-1	250 (300-1)	
LNAV/VNAV DA		316-1	271 (300-1)	
LNAV MDA		400-1	355 (400-1)	
CIRCLING	460-1 415 (500-1)	500-1 455 (500-1)	500-1½ 455 (500-1½)	600-2 555 (600-2)

