

APP CRS	Rwy Idg	3281
137°	TDZE	364
	Apt Elev	364

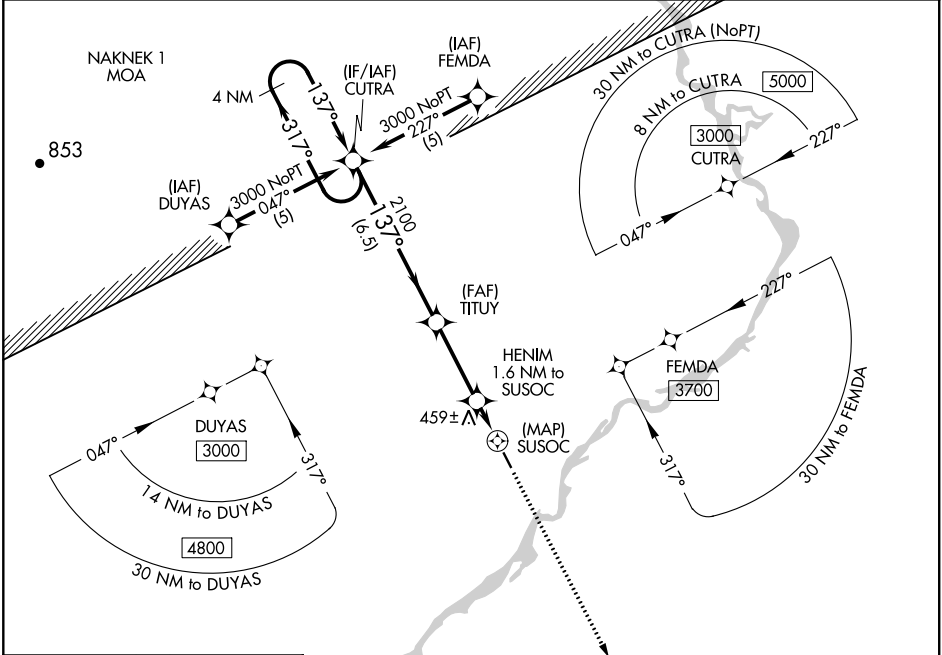
RNAV (GPS) RWY 14

NEW STUYAHOK (KNW) (P.ANW)

▼ When local altimeter setting not received, use Koliganek altimeter setting and increase all MDAs 60 feet. Procedure NA at night.
▲ DME/DME RNP-0.3 NA. Visibility reduction by helicopters NA.

MISSED APPROACH: Climb to 3000 direct JIKAL and hold.

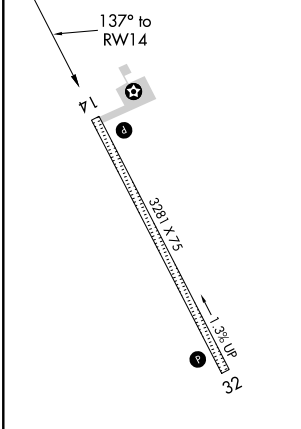
AWOS-3P 120.275	ANCHORAGE CENTER 132.75 282.35	DILLINGHAM RADIO 122.55	CTAF 122.9
---------------------------	--	-----------------------------------	----------------------



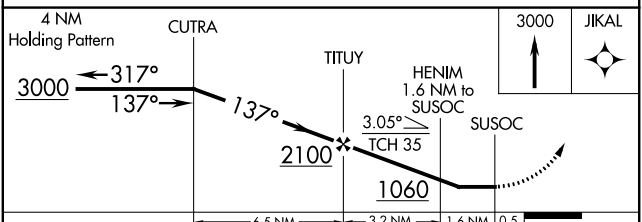
AK, 14 JUL 2022 to 08 SEP 2022

AK, 14 JUL 2022 to 08 SEP 2022

ELEV 364	TDZE 364
----------	----------



MIRL Rwy 14-32
 REIL Rws 14 and 32



CATEGORY	A	B	C	D
LNAV MDA	780-1	416 (500-1)		NA
CIRCLING	780-1	840-1		NA
	416 (500-1)	476 (500-1)		

APP CRS 317°	Rwy Idg TDZE Apt Elev	3281 354 364
------------------------	-----------------------------	---

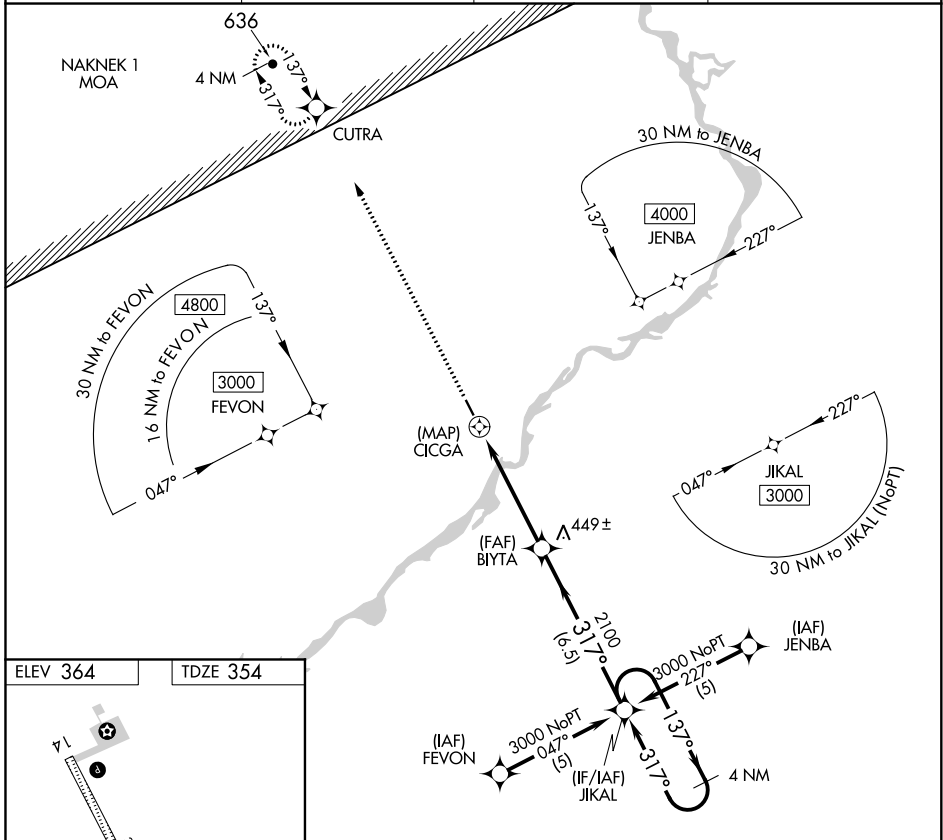
RNAV (GPS) RWY 32

NEW STUYAHOK (KNW) (P.ANW)

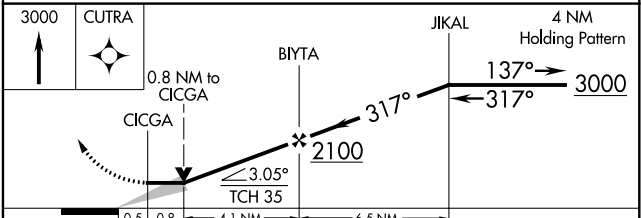
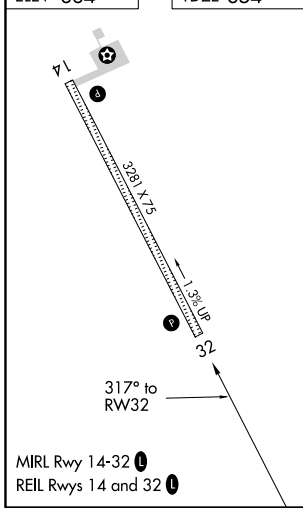
▼ When local altimeter setting not received, use Koliganek altimeter setting and increase all MDAs 60 feet.
▲ Procedure NA at night. DME/DME RNP-0.3 NA.

MISSED APPROACH: Climb to 3000 direct CUTRA and hold.

AWOS-3P 120.275	ANCHORAGE CENTER 132.75 282.35	DILLINGHAM RADIO 122.55	CTAF 122.9
---------------------------	--	-----------------------------------	----------------------



ELEV 364	TDZE 354
----------	----------



CATEGORY	A	B	C	D
LNAV MDA	760-1	406 (400-1)	NA	
CIRCLING	780-1 416 (500-1)	840-1 476 (500-1)	NA	

AK, 14 JUL 2022 to 08 SEP 2022

AK, 14 JUL 2022 to 08 SEP 2022