

LOC/DME I-DLG <b>111.9</b> Chan <b>56</b>	APP CRS <b>192°</b>	Rwy Idg <b>6400</b> TDZE <b>81</b> Apt Elev <b>82</b>
---	------------------------	---

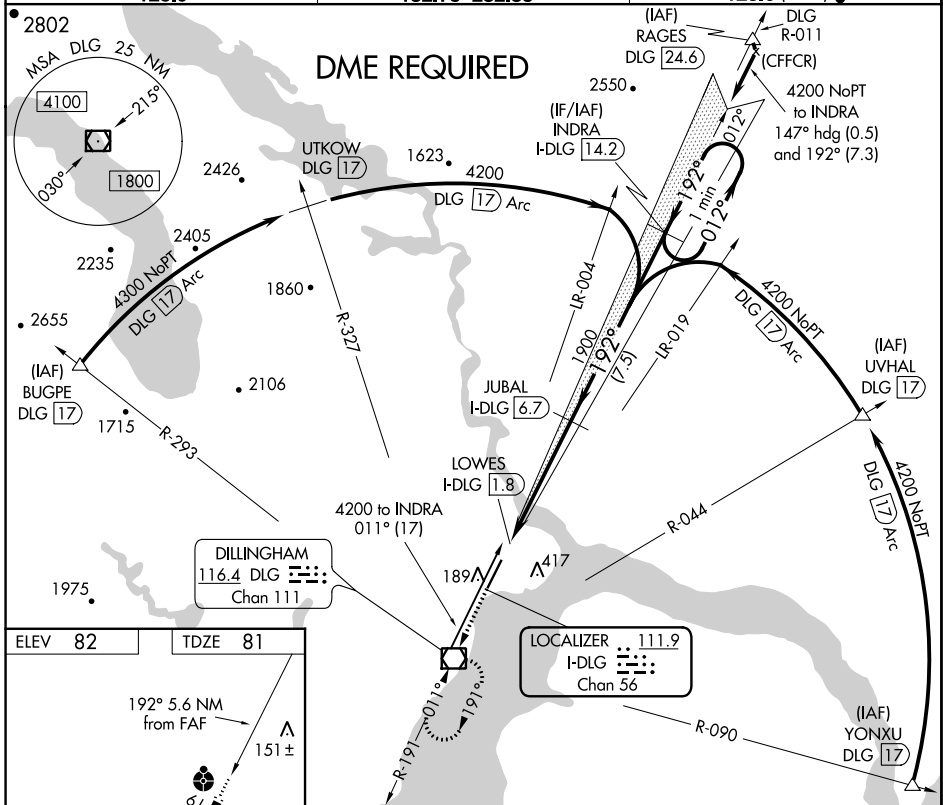
# LOC RWY 19

DILLINGHAM (DLG)(PADL)

**⚠** Inop table does not apply to S-LOC 19 Cats A/B. Inop table does not apply to when using Manokotak altimeter setting. For inop ALS, increase S-LOC 19 Cat C/D visibility to 1 3/8. Circling NA east of Rwy 1-19. Helicopter visibility reduction below 3/4 SM NA. DME required. VDP NA with Manokotak altimeter setting. When local altimeter not received, use Manokotak altimeter setting and increase all MDA 40 feet; increase S-LOC 19 Cats C/D visibility 1/8 SM and Circling Cat C visibility 1/4 SM.

**ODALS** MISSED APPROACH: Climb to 4200 direct DLG VOR/DME and hold, continue climb-in-hold to 4200.

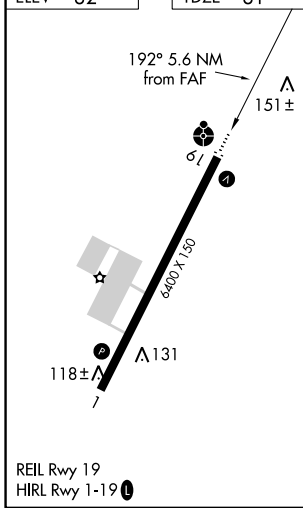
AFIS <b>125.0</b>	ANCHORAGE CENTER <b>132.75 282.35</b>	DILLINGHAM RADIO <b>123.6</b> (CTAF) <b>0</b>
----------------------	--	--



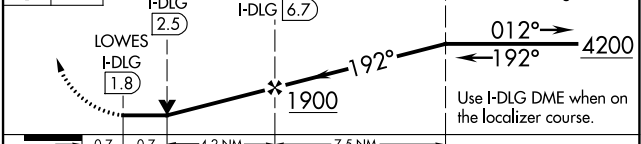
AK, 25 JAN 2024 to 21 MAR 2024

AK, 25 JAN 2024 to 21 MAR 2024

ELEV 82	TDZE 81
---------	---------



4200 DLG LOC unusable from I-DLG 1.8 DME inbound. Visual Segment - Obstacles. One Minute Holding Pattern



CATEGORY	A	B	C	D
S-19	560-1	479 (500-1)	560-1 1/4	479 (500-1 1/4)
<b>C</b> CIRCLING	600-1	518 (600-1)	700-1 1/2	780-2 1/4
			618 (700-1 1/2)	698 (700-2 1/4)

WAAS CH <b>82025</b> <b>W01A</b>	APP CRS <b>011°</b>	Rwy Idg TDZE <b>82</b> Apt Elev <b>82</b>
--	------------------------	---

# RNAV (GPS) RWY 1

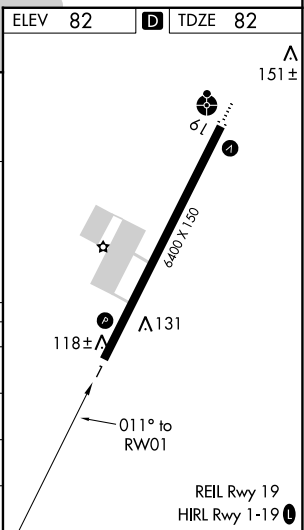
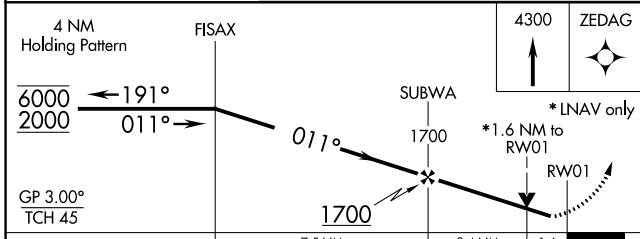
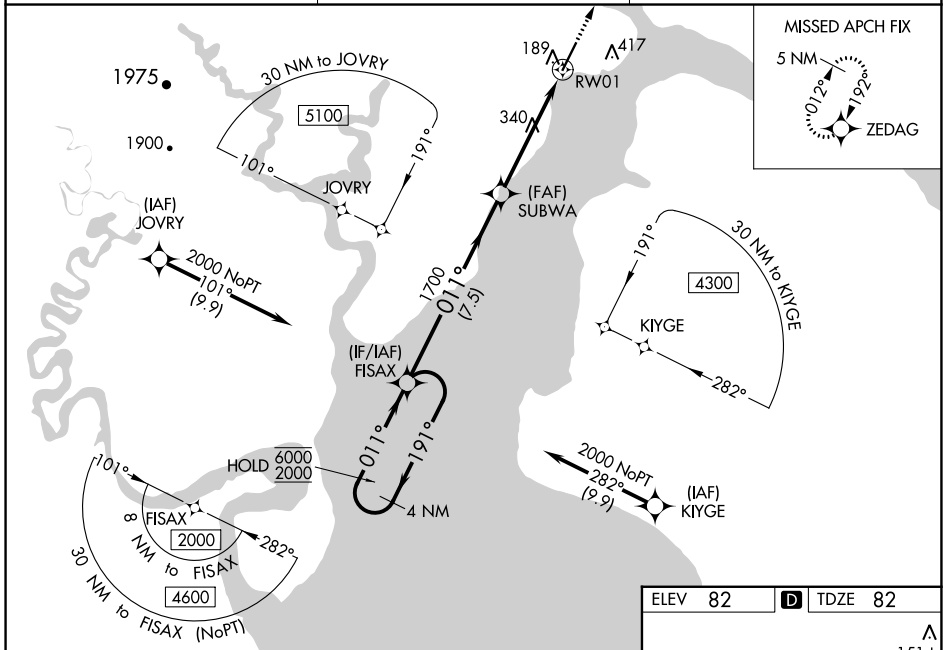
DILLINGHAM (DLG)(PADL)

RNP APCH.

**⚠** Circling NA east of Rwy 1-19.  
**⚠** For uncompensated Baro-VNAV systems, procedure NA below -20°C or above 54°C.  
 Rwy 1 helicopter visibility reduction below ¾ SM NA.

MISSED APPROACH: Climb to 4300 direct ZEDAG and hold, continue climb-in-hold to 4300.

AFIS <b>125.0</b>	ANCHORAGE CENTER <b>132.75 282.35</b>	DILLINGHAM RADIO <b>123.6 (CTAF) 0</b>
----------------------	--	---



CATEGORY	A	B	C	D
LPV DA		332-1	250 (300-1)	
LNAV/VNAV DA		451-1	369 (400-1)	
LNAV MDA	640-1	558 (600-1)	640-1½	558 (600-1½)
<b>C</b> CIRCLING	640-1	558 (600-1)	700-1¾ 618 (700-1¾)	780-2¼ 698 (700-2¼)

AK, 25 JAN 2024 to 21 MAR 2024

AK, 25 JAN 2024 to 21 MAR 2024

APP CRS	Rwy Idg	<b>6400</b>
<b>192°</b>	TDZE	<b>81</b>
	Apt Elev	<b>82</b>

# RNAV (GPS) RWY 19

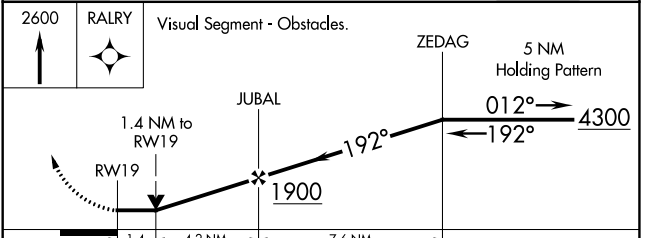
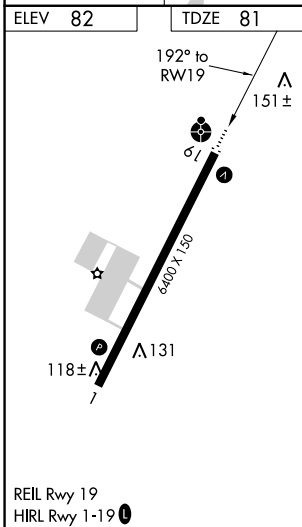
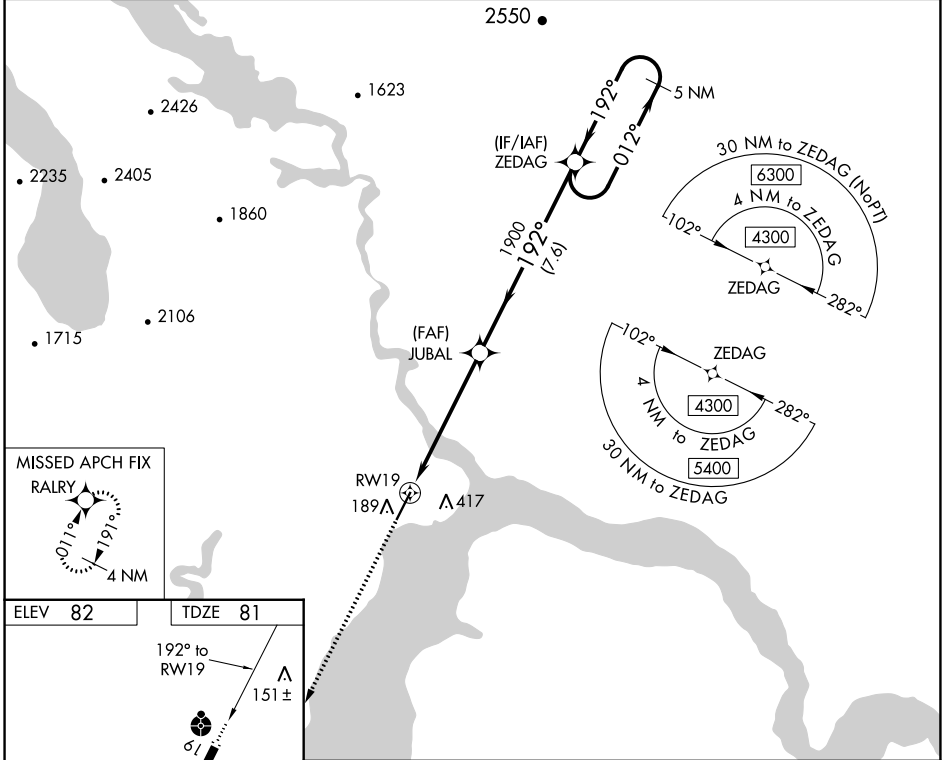
DILLINGHAM (DLG)(PADL)

**⚠** Inop table does not apply to Cats A/B. Inop table does not apply when using Manokotok altimeter setting. Circling NA east of Rwy 1-19. Rwy 19 helicopter visibility reduction below ¼ SM NA. DME/DME RNP-0.3 NA. VDP NA when using Manokotok altimeter setting. When local altimeter setting not received, use Manokotok altimeter setting and increase all MDA 40 feet and increase LNAV Cat C/D visibility ½ SM. For inop ALS, increase LNAV Cat C/D visibility to 1 ½ mile.



**MISSED APPROACH:**  
Climb to 2600 direct RALRY and hold.

AFIS <b>125.0</b>	ANCHORAGE CENTER <b>132.75 282.35</b>	DILLINGHAM RADIO <b>123.6 (CTAF)</b>
----------------------	--	---



CATEGORY	A	B	C	D
LNAV MDA	560-1	479 (500-1)	560-1¼	479 (500-1¼)
<b>C</b> CIRCLING	600-1	518 (600-1)	700-1¾ 618 (700-1¾)	780-2¼ 698 (700-2¼)

AK, 25 JAN 2024 to 21 MAR 2024

AK, 25 JAN 2024 to 21 MAR 2024

VOR/DME DLG	APP CRS	Rwy Idg	<b>6400</b>
<b>116.4</b>	<b>010°</b>	TDZE	<b>82</b>
Chan <b>111</b>		Apt Elev	<b>82</b>

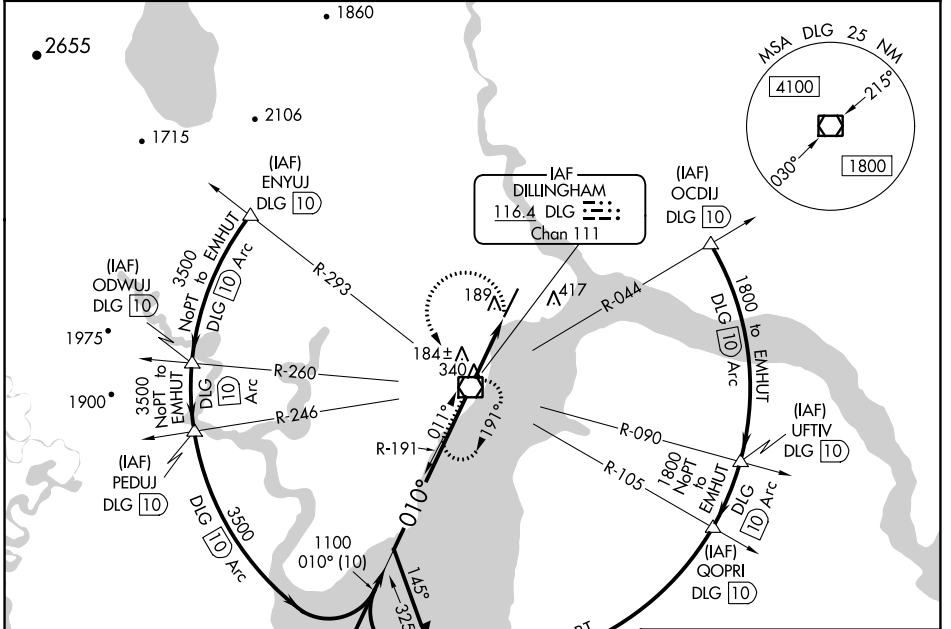
# VOR RWY 1

DILLINGHAM (DLG)(PADL)

**▼** Rwy 1 helicopter visibility reduction below 3/4 SM NA. Circling NA east of Rwy 1-19.

**▲** MISSED APPROACH: Climbing left turn to 2000 direct DLG VOR/DME and hold, continue climb-in-hold to 2000.

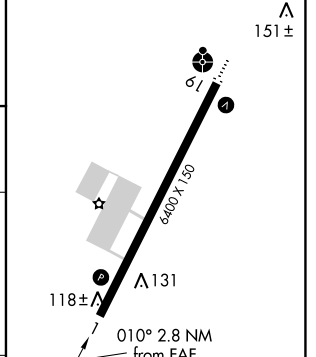
AFIS <b>125.0</b>	ANCHORAGE CENTER <b>132.75 282.35</b>	DILLINGHAM RADIO <b>123.6 (CTAF) 0</b>
----------------------	--	---



AK, 25 JAN 2024 to 21 MAR 2024

AK, 25 JAN 2024 to 21 MAR 2024

ELEV 82	<b>D</b>	TDZE 82
---------	----------	---------



VGSI and descent angles not coincident (VGSI Angle 3.00/TCH 45).

Remain within 10 NM

2000

190°

010°

1100

3.25° TCH 45

DLG 1.6

DLG 2.8

1.6 NM

1.2 NM

CATEGORY	A	B	C	D
S-1	500-1 418 (500-1)		500-1 1/4 418 (500-1 1/4)	
<b>C</b> CIRCLING	600-1 518 (600-1)		700-1 3/4 618 (700-1 3/4)	780-2 1/4 698 (700-2 1/4)

FAF to MAP 2.8 NM					
Knots	60	90	120	150	180
Min:Sec	2:48	1:52	1:24	1:07	0:56