

WAAS CH 49026 W02A	APP CRS 017°	Rwy Idg TDZE Apt Elev	6020 182 194
--	------------------------	-----------------------------	---

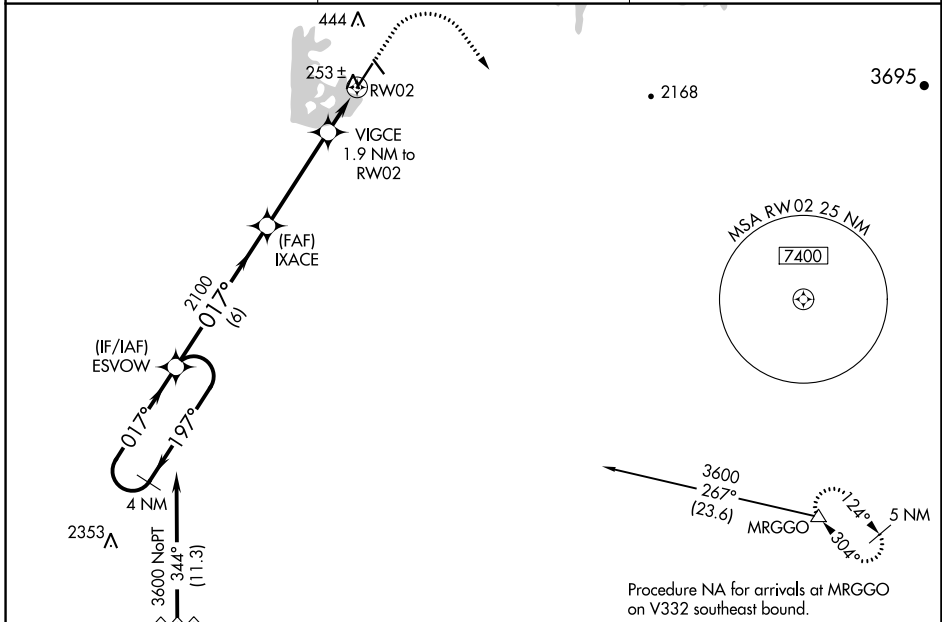
RNAV (GPS) RWY 2

OROVILLE MUNI (OVE)

▽ For uncompensated Baro-VNAV systems, LNAV/VNAV NA below -2°C (29°F) or above 54°C (130°F). Circling NA northeast of Rwy 13-31. DME/DME RNP-0.3 NA.

MISSED APPROACH: Climb to 650 then climbing right turn to 6000 direct MRGGO and hold, continue climb-in-hold to 6000.

ASOS 121.425	NORCAL APP CON 125.4 259.1	UNICOM 122.8(CTAF)
------------------------	--------------------------------------	------------------------------

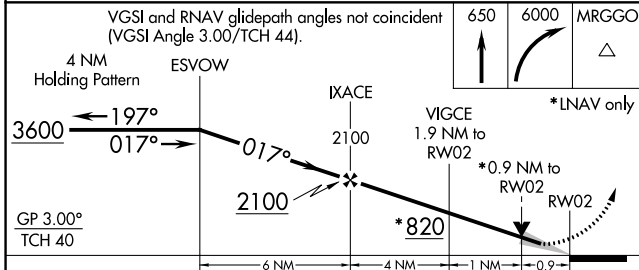


SW-2, 22 FEB 2024 to 21 MAR 2024

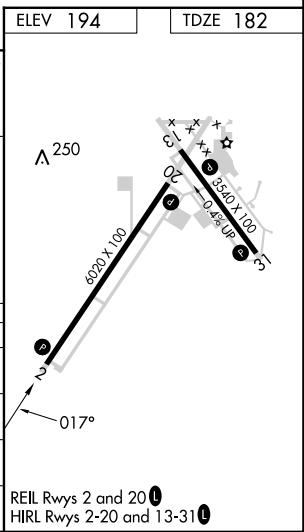
SW-2, 22 FEB 2024 to 21 MAR 2024

Procedure NA for arrivals at YUBBA on V23 southbound.

VGSI and RNAV glidepath angles not coincident (VGSI Angle 3.00/TCH 44).



CATEGORY	A	B	C	D
LPV DA		432-7/8	250 (300-7/8)	
LNAV/VNAV DA		432-7/8	250 (300-7/8)	
LNAV MDA		520-1	338 (400-1)	
C CIRCLING	580-1 386 (400-1)	660-1 466 (500-1)	660-1½ 466 (500-1½)	780-2 586 (600-2)



REIL Rws 2 and 20
HIRL Rws 2-20 and 13-31