

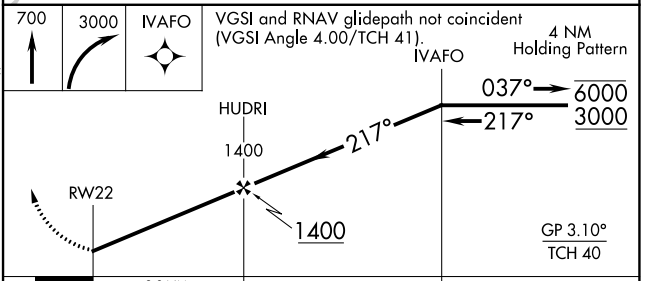
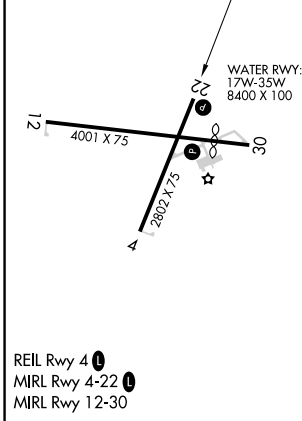
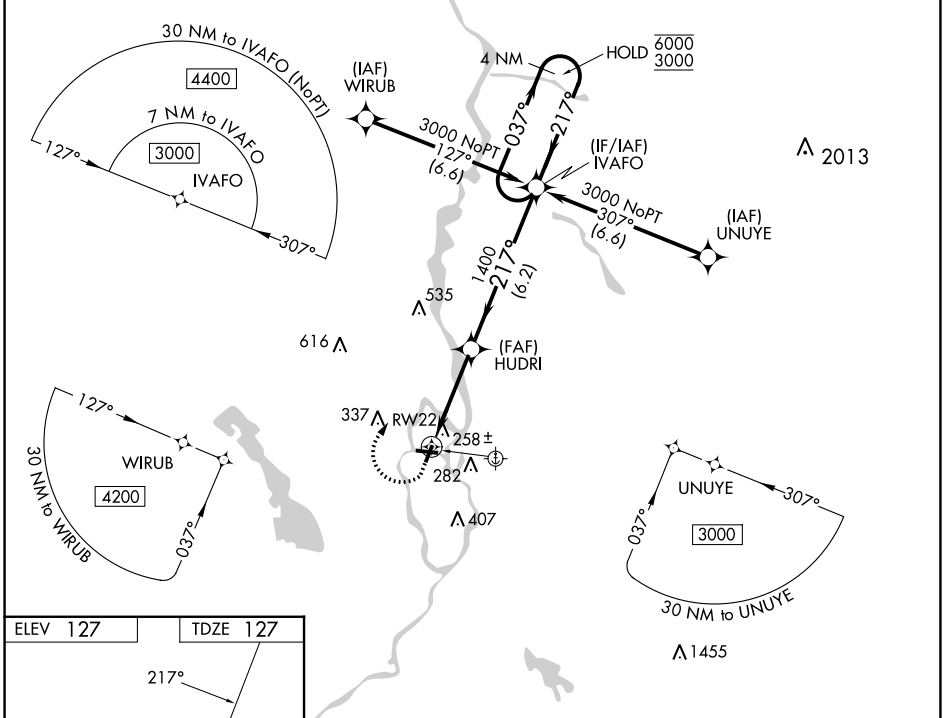
| | | | |
|--|------------------------|-----------------------------|---|
| WAAS CH 61044 W22A | APP CRS 217° | Rwy Idg TDZE Apt Elev | 2802 127 127 |
|--|------------------------|-----------------------------|---|

RNAV (GPS) RWY 22

DEWITT FLD/OLD TOWN MUNI (OLD)

| | |
|---|---|
| RNP APCH - GPS. | MISSED APPROACH: Climb to 700 then climbing right turn to 3000 direct IVAFO and hold, continue climb-in-hold to 3000. |
| <p>▼ Circling NA to Rwy 17W and 35W. Circling Rwy 4, 12, 22, 30 NA at night.</p> <p>▲ NA Rwy 22 helicopter visibility reduction below 3/4 SM NA. Use Bangor Inlt altimeter setting; when not received, use Bar Harbor altimeter setting and increase all MDA 60 feet and increase LPV visibility all Cats 1/8 SM.</p> | |

| | | |
|---------------------------|--|---------------------------------|
| BGR ASOS 127.75 | BANGOR APP CON 118.925 239.3 | UNICOM 122.8 (CTAF) 0 |
|---------------------------|--|---------------------------------|



| CATEGORY | A | B | C | D |
|----------|-------------|-------------|---|----|
| LPV DA | 467-1 | 340 (400-1) | | NA |
| LNAV MDA | 560-1 | 433 (500-1) | | NA |
| CIRCLING | 640-1 | 700-1 | | NA |
| | 513 (600-1) | 573 (600-1) | | |

NE-1, 22 FEB 2024 to 21 MAR 2024

NE-1, 22 FEB 2024 to 21 MAR 2024