

EL CENTRO, CALIFORNIA

RNAV (GPS) RWY 8

WAAS CH 89932 W08A	APCH CRS 079°	Rwy ldg TDZE Arpt Elev	9503 -46 -42
---------------------------------	-------------------------	------------------------------	---

AL-472 (USN)

EL CENTRO NAF (VRACIU FLD) (KNJK)

RNP APCH

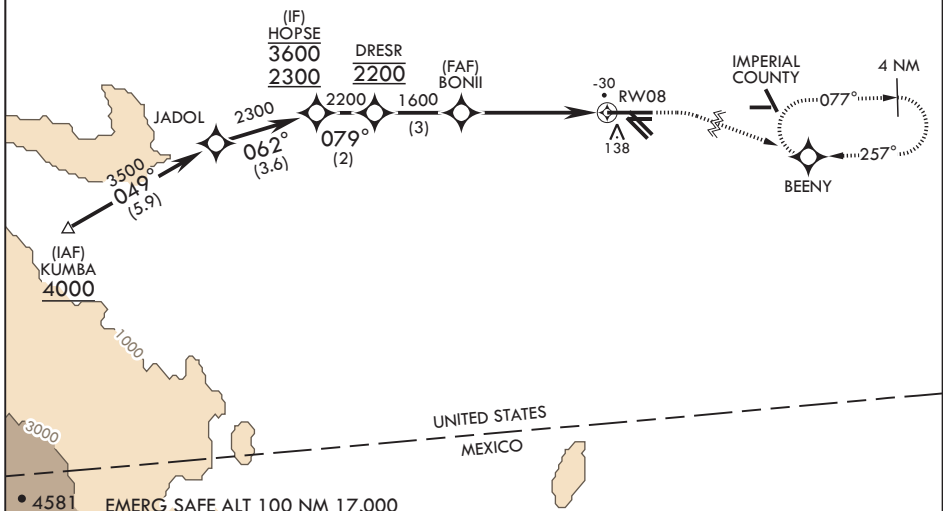
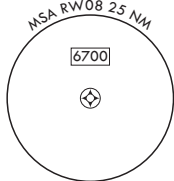
⚠ Circling visibility reduction by helicopters NA.
When tower closed, increase visibility to 1 mile.

MISSED APPROACH: Climb to 800, then climbing right turn to 2400 direct BEENY and hold.

ATIS ★ 269.275	LOS ANGELES CENTER 128.6 291.7	TOWER ★ 119.1 360.2	GND CON 121.9 254.35	CLNC DEL 340.2
--------------------------	--	-------------------------------	--------------------------------	--------------------------

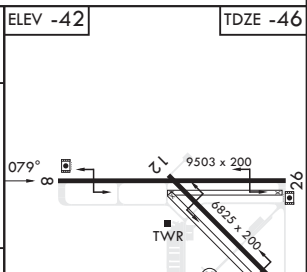
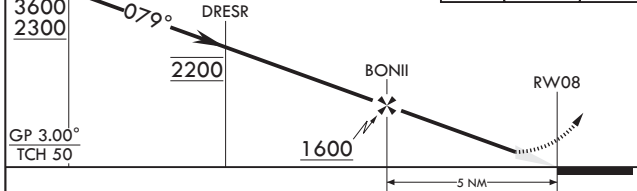
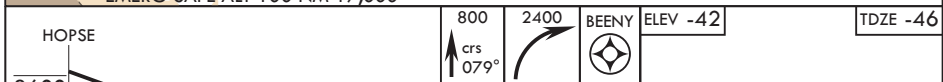
Circling to Rwy 30 NA at night.

For uncompensated Baro-VNAV systems, LNAV/VNAV NA below -14°C (7°F) or above 54°C (129°F).



SW-3, 22 FEB 2024 to 21 MAR 2024

SW-3, 22 FEB 2024 to 21 MAR 2024



CATEGORY	A	B	C	D
LPV DA	204- ³ / ₄		250	(300- ³ / ₄)
LNAV/VNAV DA	204- ³ / ₄ 250 (300- ³ / ₄)	235- ⁷ / ₈ 281 (300- ⁷ / ₈)	249- ⁷ / ₈ 295 (300- ⁷ / ₈)	268- ⁷ / ₈ 314 (400- ⁷ / ₈)
LNAV MDA	460-1	506 (600-1)	460-1 ¹ / ₈	506 (600-1 ¹ / ₈)
C CIRCLING	480-1	522 (600-1)	480-1 ¹ / ₂ 522 (600-1 ¹ / ₂)	520-2 562 (600-2)



EL CENTRO, CALIFORNIA
Orig 13JUL23

32°50'N - 115°40'W

EL CENTRO NAF (VRACIU FLD) (KNJK)

RNAV (GPS) RWY 8