

APP CRS	Rwy ldg	3300
239°	TDZE	688
	Apt Elev	688

RNAV (GPS) RWY 24

FRANKLIN COUNTY RGNL (N68)

RNP APCH - GPS.

▽ Rwy 24 helicopter visibility reduction below 1 SM NA. When local altimeter setting not received, use Hagerstown, MD altimeter setting and increase all MDAs 40 feet, increase LNAV Cat C visibility ¼ SM. Straight-in and Circling Rwy 24 NA at night.

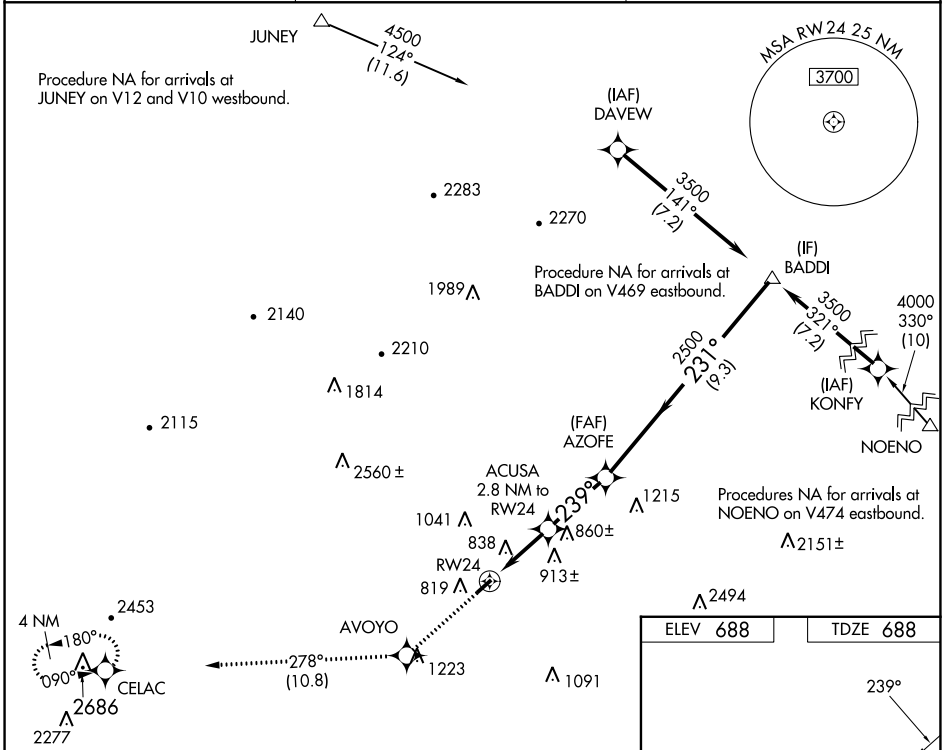
△ NA

MISSED APPROACH: Climb to 4000 direct AVOYO and on track 278° to CELAC and hold, continue climb-in-hold to 4000.

AWOS-3
120.725

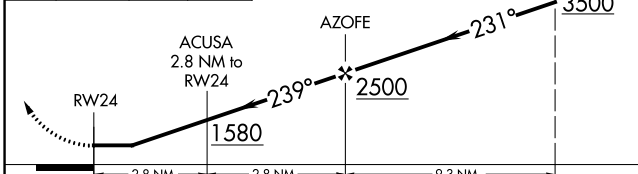
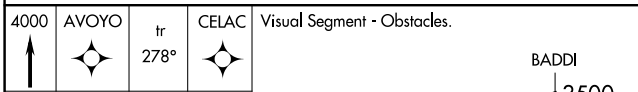
HARRISBURG APP CON
124.1 273.525

CTAF
122.9

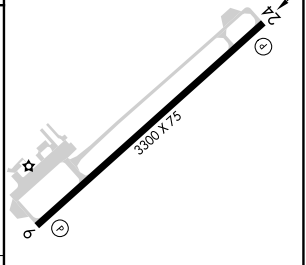


NE-4, 22 FEB 2024 to 21 MAR 2024

NE-4, 22 FEB 2024 to 21 MAR 2024



ELEV 688	TDZE 688
----------	----------



CATEGORY	A	B	C	D
LNAV MDA	1100-1	412 (500-1)	1100-1½ 412 (500-1½)	NA
CIRCLING	1220-1	532 (600-1)	1360-2 672 (700-2)	NA

APP CRS 059°	Rwy Idg 3300
	TDZE 688
	Apt Elev 688

RNAV (GPS) RWY 6

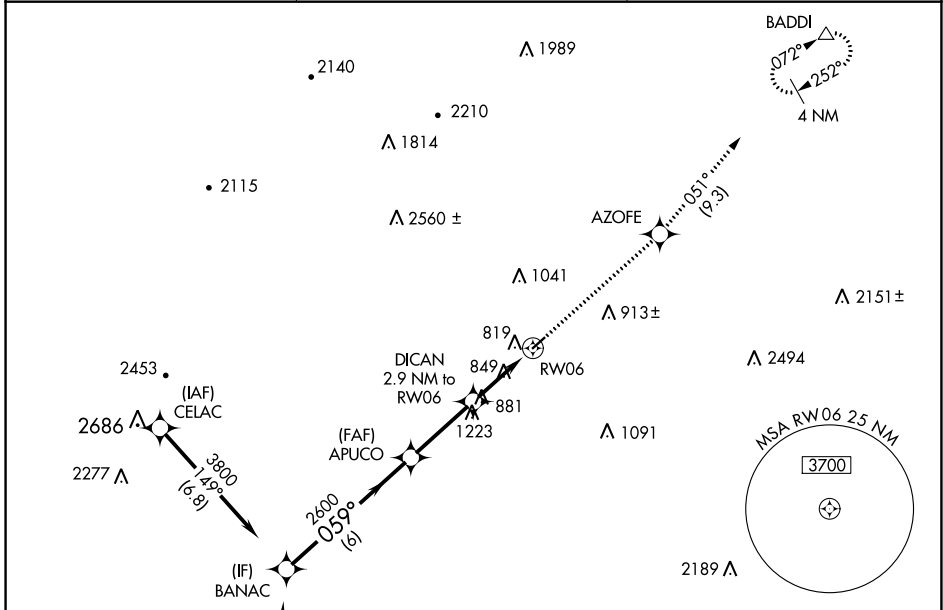
FRANKLIN COUNTY RGNL (N68)

RNP APCH - GPS.

▼ Circling to Rwy 24 NA at night. VDP NA when using Hagerstown, MD altimeter setting.
 ▲ NA When local altimeter setting not received, use Hagerstown, MD altimeter setting and increase all MDAs 40 feet, increase LNAV Cat C visibility ¼ SM.

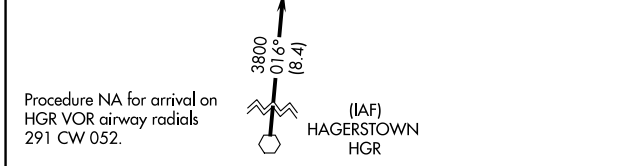
MISSED APPROACH: Climb to 4000 direct AZOFE and on track 051° to BADDI and hold, continue climb-in-hold to 4000.

AWOS-3 120.725	HARRISBURG APP CON 124.1 273.525	CTAF 122.9
--------------------------	--	----------------------

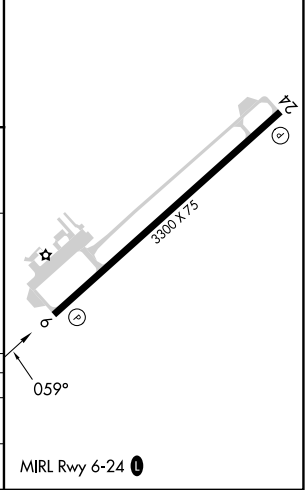
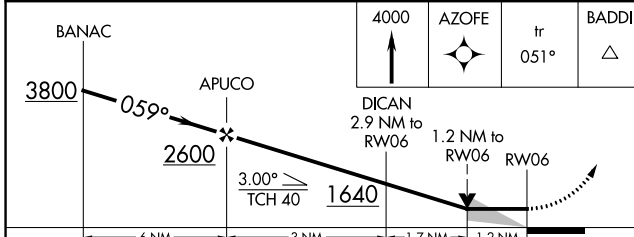


NE-4, 22 FEB 2024 to 21 MAR 2024

NE-4, 22 FEB 2024 to 21 MAR 2024



ELEV 688	TDZE 688
----------	----------



CATEGORY	A	B	C	D
LNAV MDA	1100-1	412 (500-1)	1100-1½ 412 (500-1½)	NA
CIRCLING	1220-1	532 (600-1)	1360-2 672 (700-2)	NA