

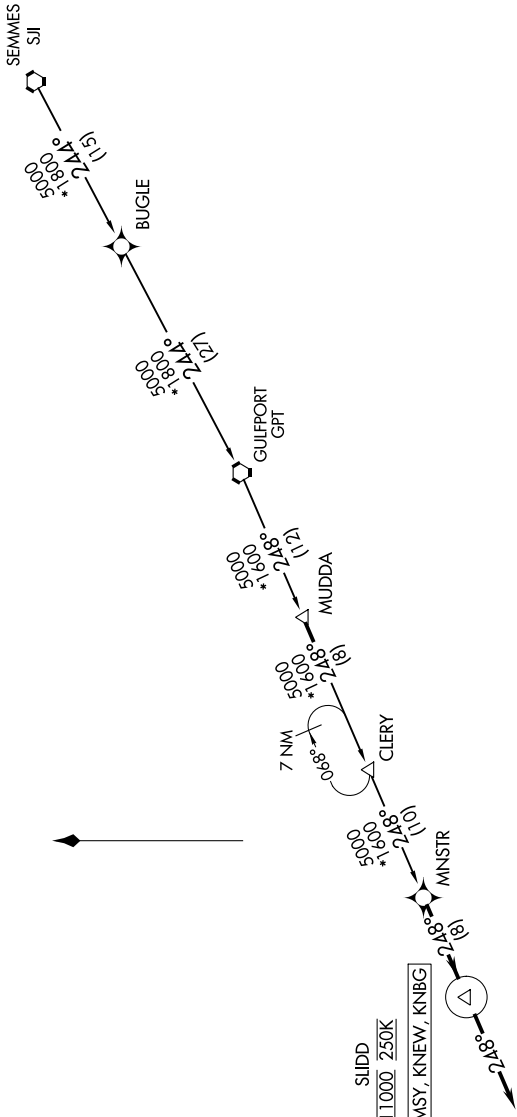
MNSTR ONE ARRIVAL (RNAV)

NEW ORLEANS, LOUISIANA

SC-4, 22 FEB 2024 to 21 MAR 2024

NEW ORLEANS APP CON
 125.5 350.35 (WEST)
 133.15 290.3 (EAST)
 KNBG ATIS
 279.55
 MSY D-ATIS
 127.55
 NEW ATIS
 124.9

RNAV 1 - DME/DME/IRU or GPS.
 RADAR required.



SLIDD
 11000 2500

[LDG KMSY, KNEW, KNBG]

LAKEFRONT
 LOUIS ARMSTRONG
 NEW ORLEANS INTL
 NEW ORLEANS NAS JRB
 (ALVIN CALLENDER FLD)

ARRIVAL ROUTE DESCRIPTION
 GULFPORT TRANSITION (GPT.MNSTR1)
 SEMMES TRANSITION (SJI.MNSTR1)

LANDING ALL AIRPORTS: From MNSTR on track 248° to cross SLIDD at 11000 and at 250K. Expect RADAR vectors to final approach course.

NOTE: Chart not to scale.

MNSTR ONE ARRIVAL (RNAV)

NEW ORLEANS, LOUISIANA