

MINNEAPOLIS APP CON
135.475 335.5
D-ATIS ARR
135.35 239.275

NITZR

12000 280K

See following page for Arrival Routes.

8000

*2600

005°

(13)

DEMLL

16000 280K

184°

10 NM

8000

*2800

004°

(28)

KBEEE

FL240

10000

*2800

004°

(13)

RRAZZ

10000

*2800

029°

(30)

FUZEE

12000

*2500

030°

(16)

ROKKK

(CONTINUED ON FOLLOWING PAGE)

- DEMLL TRANSITION (DEMLL.NITZR3)
- ROKKK TRANSITION (ROKKK.NITZR3)
- RRAZZ TRANSITION (RRAZZ.NITZR3)

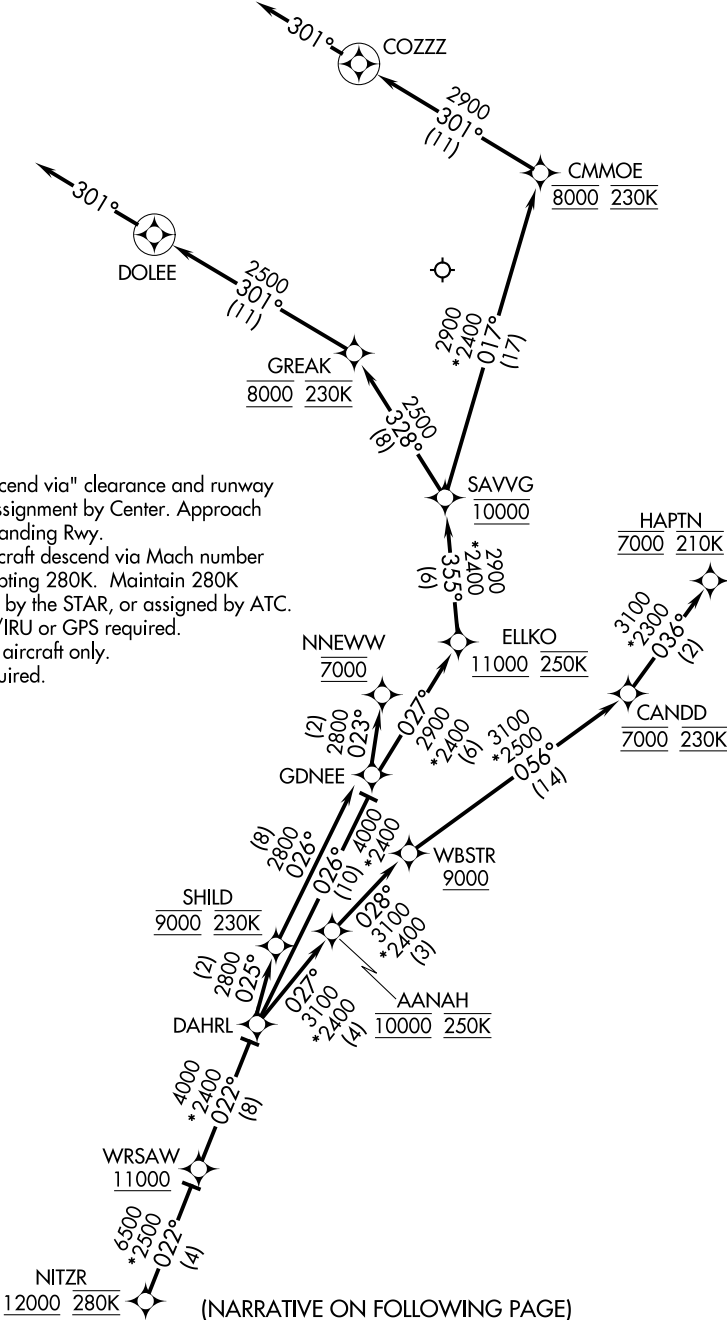
NOTE: Chart not to scale.

NC-1, 22 FEB 2024 to 21 MAR 2024

NC-1, 22 FEB 2024 to 21 MAR 2024

MINNEAPOLIS APP CON
135.475 335.5
D-ATIS ARR
135.35 239.275

- NOTE: Expect "descend via" clearance and runway transition assignment by Center. Approach will assign landing Rwy.
- NOTE: Turbojet aircraft descend via Mach number until intercepting 280K. Maintain 280K until slowed by the STAR, or assigned by ATC.
- NOTE: DME/DME/IRU or GPS required.
- NOTE: For turbojet aircraft only.
- NOTE: RADAR required.
- NOTE: RNAV 1.



NOTE: Chart not to scale. (NARRATIVE ON FOLLOWING PAGE)