

WAAS CH 61205 W36A	APP CRS 360°	Rwy Idg 5503 TDZE 1497 Apt Elev 1498
--	------------------------	---

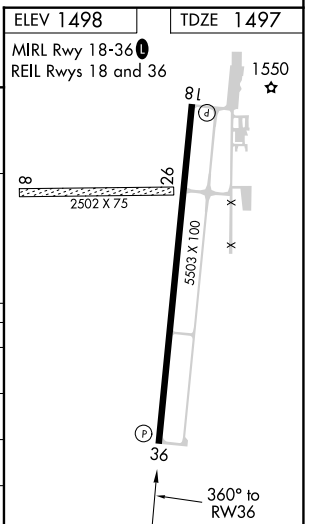
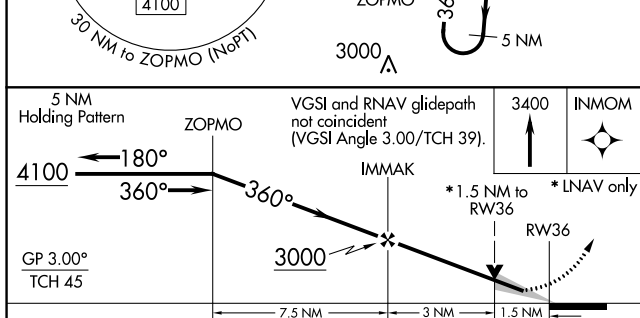
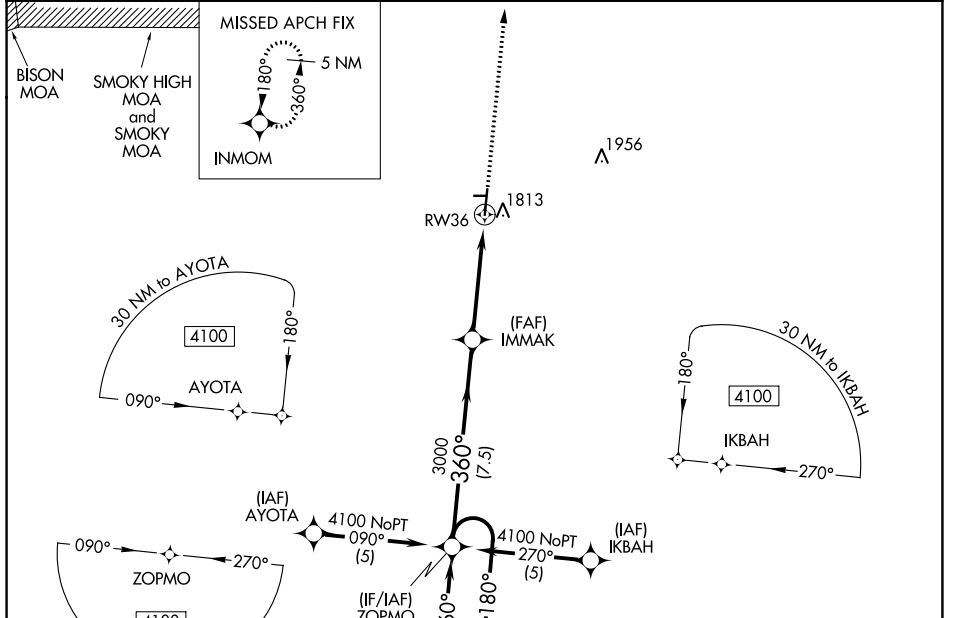
RNAV (GPS) RWY 36

MC PHERSON (MPR)

▽ When local altimeter setting not received, use Salina altimeter setting: increase LPV DA to 1838 feet, LNAV/VNAV DA to 2074 feet and all visibilities $\frac{3}{8}$ mile; increase all MDA 100 feet and visibility Cat C $\frac{1}{4}$ mile. For uncompensated Baro-VNAV systems, LNAV/VNAV NA below -17°C (2°F) or above 54°C (130°F). Baro-VNAV and VDP NA when using Salina altimeter setting. DME/DME RNP-0.3 NA. Circling NA to Rwy's 8 and 26.

△ NA MISSED APPROACH: Climb to 3400 direct INMOM and hold.

AWOS-3P 119.025	WICHITA APP CON 125.5 306.2	UNICOM 122.8 (CTAF) 0
---------------------------	---------------------------------------	---------------------------------



CATEGORY	A	B	C	D
LPV DA	1747- $\frac{3}{4}$	250 (300- $\frac{3}{4}$)		NA
LNAV/ VNAV DA	1983-1 $\frac{5}{8}$	486 (500-1 $\frac{1}{8}$)		NA
LNAV MDA	2020-1	523 (600-1)	2020-1 $\frac{1}{2}$ 523 (600-1 $\frac{1}{2}$)	NA
CIRCLING	2120-1	622 (700-1)	2120-1 $\frac{3}{4}$ 622 (700-1 $\frac{3}{4}$)	NA

NC-2, 22 FEB 2024 to 21 MAR 2024

NC-2, 22 FEB 2024 to 21 MAR 2024