

WAAS CH 53426 W14A	APP CRS 143°	Rwy Idg TDZE Apt Elev	9001 1276 1297
--	------------------------	-----------------------------	---

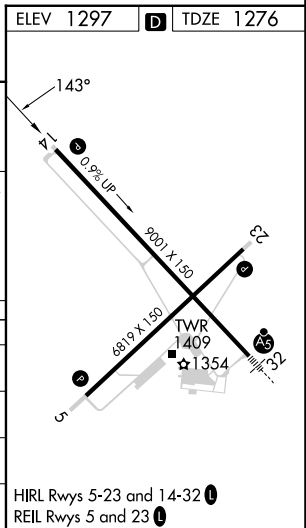
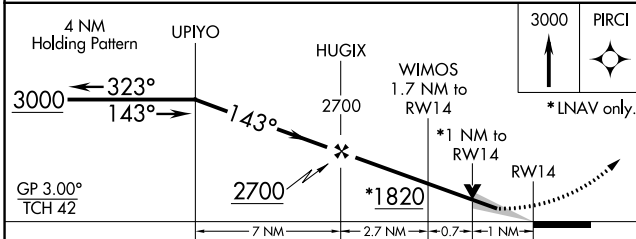
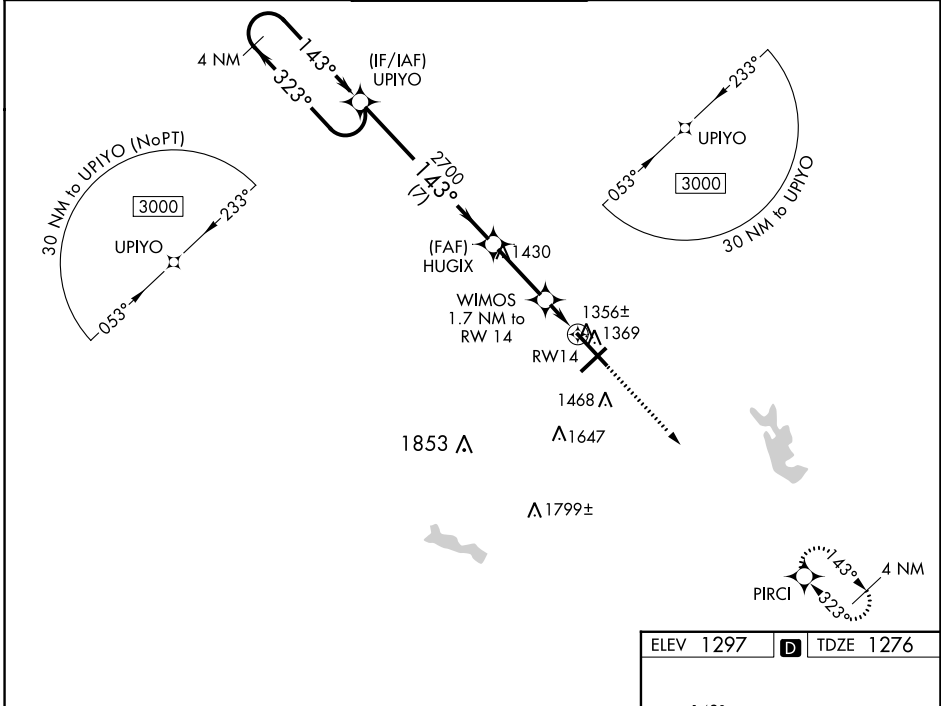
RNAV (GPS) RWY 14

MANSFIELD LAHM RGNL (MFD)

▼ For uncompensated Baro-VNAV systems, LNAV/VNAV NA below -18°C (0°F) or above 36°C (96°F).
▲ When local altimeter not received, use Marion altimeter setting and increase all DA 107 feet and all MDA 120 feet, and LPV all Cats visibility to 1 SM, LNAV/VNAV all Cats, and LNAV Cat C/D to 1 3/8 SM. Increase Circling Cat C/D visibility 1/2 SM. VDP and Baro-VNAV NA when using Marion altimeter setting.

MISSED APPROACH:
Climb to 3000 direct PIRCI and hold.

ATIS 125.3	CLEVELAND APP CON * 124.2 360.65	MANSFIELD TOWER * 119.8 (CTAF) 291.775	GND CON 121.8 291.775	UNICOM 122.95
----------------------	--	--	---------------------------------	-------------------------



CATEGORY	A	B	C	D
LPV DA		1476-3/4	200 (200-3/4)	
LNAV/VNAV DA		1557-7/8	281 (300-7/8)	
LNAV MDA		1620-1	344 (400-1)	
C CIRCLING	1760-1	463 (500-1)	2000-2 703 (800-2)	2000-2 1/4 703 (800-2 1/4)