

COKTL THREE ARRIVAL (RNAV) Transition Routes

RNAV 1 - DME/DME/IRU or GPS.

RADAR required.

LAS VEGAS APP CON

125.025 379.15

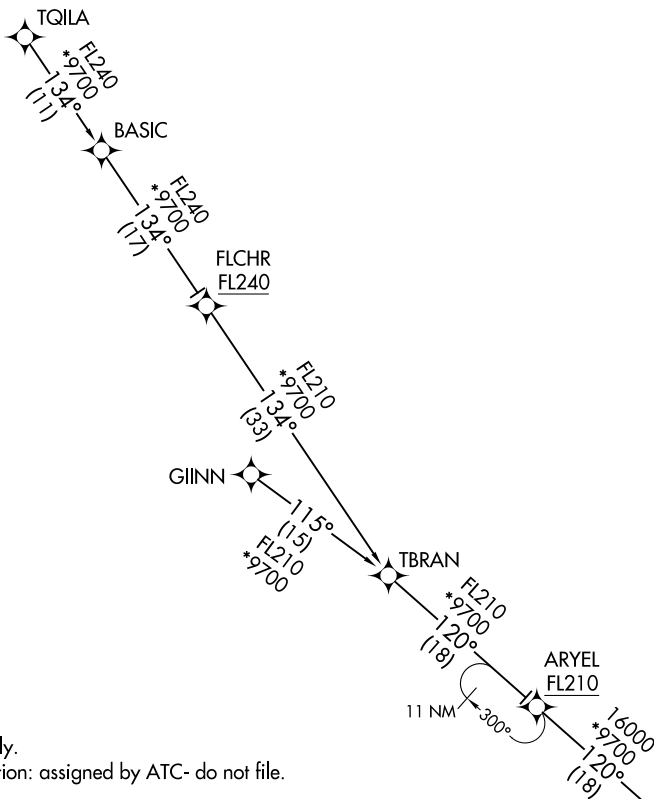
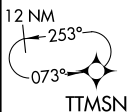
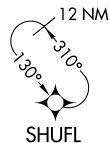
D-ATIS

132.4

LAS VEGAS TOWER

118.75 257.8 (Rwys 1L/19R, 1R/19L)

119.9 257.8 (Rwys 8L/26R, 8R/26L)



NOTE: Jet aircraft only.

NOTE: GIINN Transition: assigned by ATC- do not file.

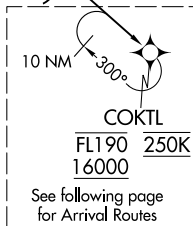
(CONTINUED ON FOLLOWING PAGE)

FLCHR TRANSITION (FLCHR.COKTL3)

GIINN TRANSITION (GIINN.COKTL3)

TQILA TRANSITION (TQILA.COKTL3)

NOTE: Chart not to scale.



COKTL THREE ARRIVAL (RNAV) Transition Routes

RNAV 1 - DME/DME/IRU or GPS.
RADAR required.

LAS VEGAS APP CON
125.025 379.15
D-ATIS
132.4

LAS VEGAS TOWER
118.75 257.8 (Rwys 1L/19R, 1R/19L)
119.9 257.8 (Rwys 8L/26R, 8R/26L)

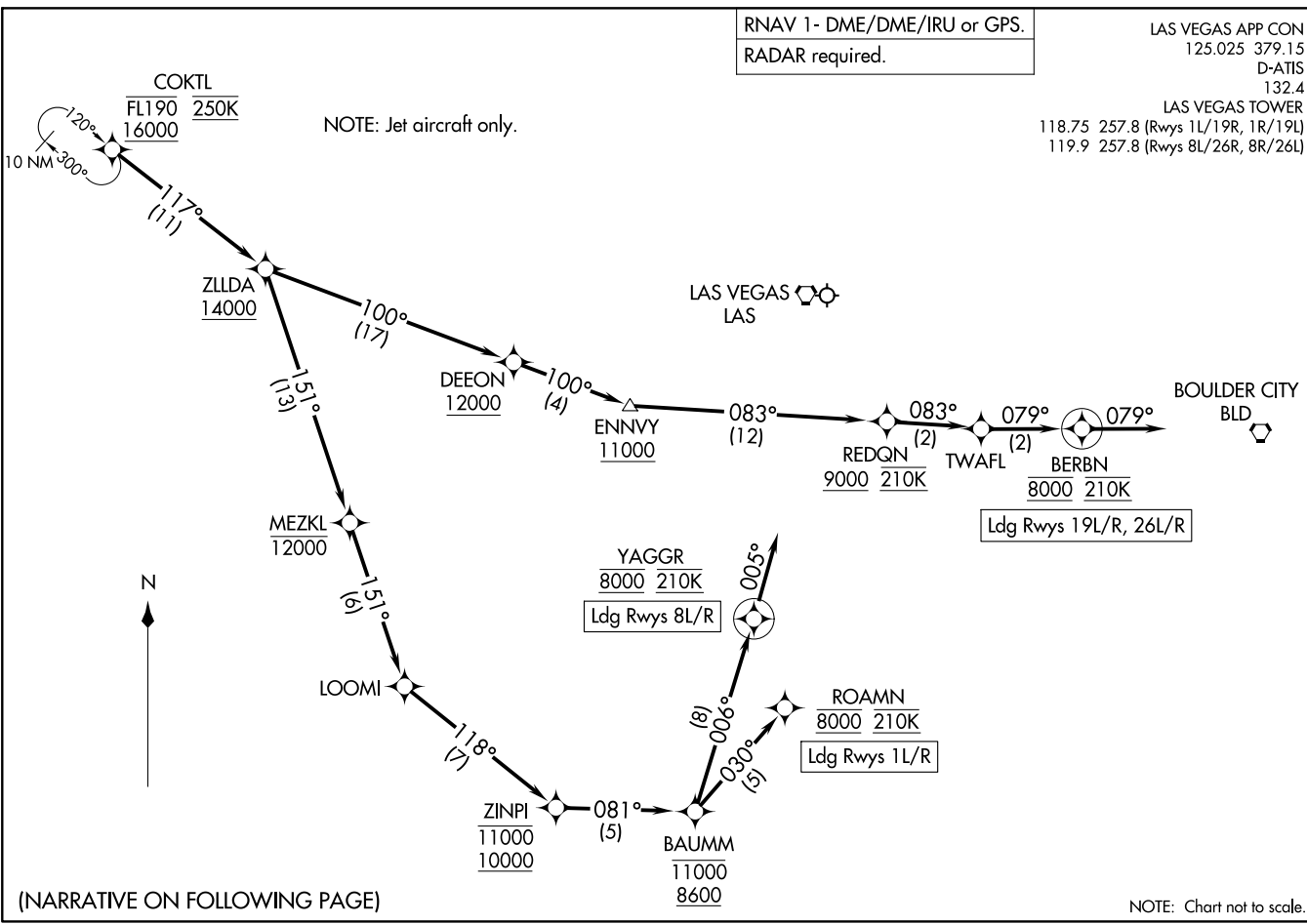
NOTE: Jet aircraft only.

COKTL THREE ARRIVAL (RNAV)
(COKTL.COKTL3) 15JUN23

(COKTL.COKTL3) 23166

AL-662 (FAA)
Arrival Routes

HARRY REID INTL (LAS)
LAS VEGAS, NEVADA



(NARRATIVE ON FOLLOWING PAGE)

NOTE: Chart not to scale.

LAS VEGAS, NEVADA
HARRY REID INTL (LAS)