

(GARLK1.GARLK) 18256

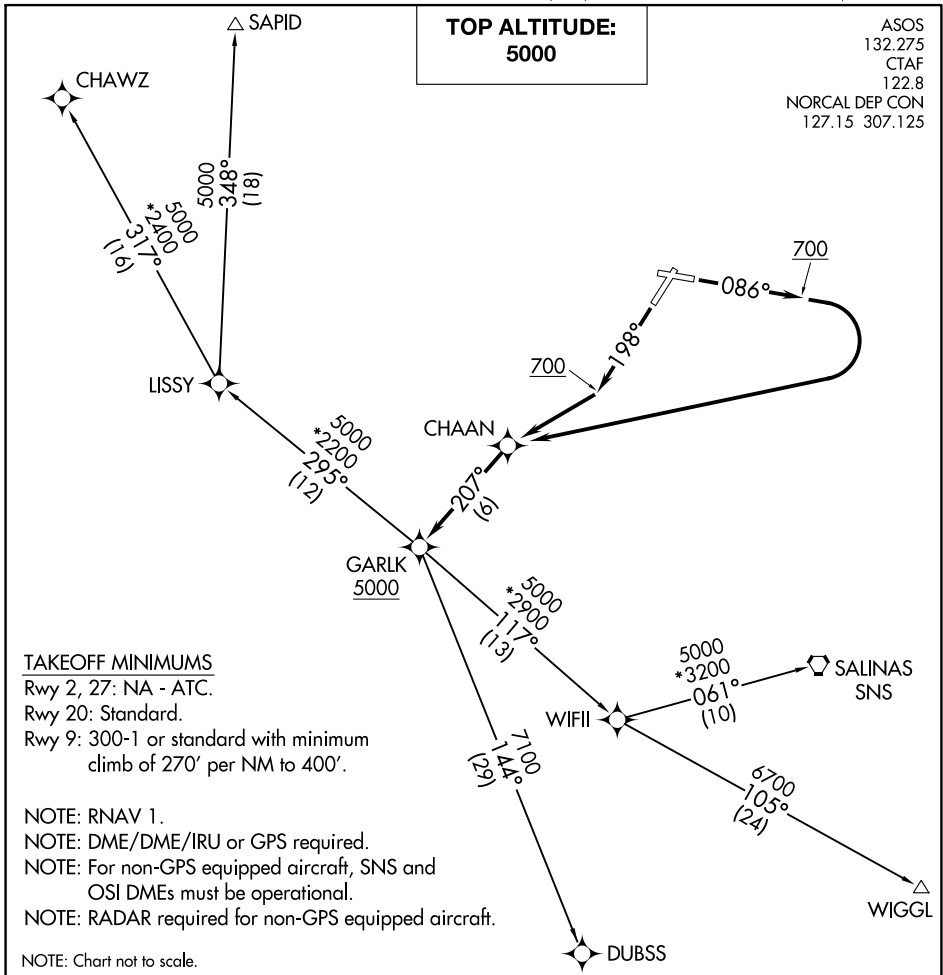
# GARLK ONE DEPARTURE (RNAV)

AL-805 (FAA)

WATSONVILLE MUNI (WVI)  
WATSONVILLE, CALIFORNIA

**TOP ALTITUDE:  
5000**

ASOS  
132.275  
CTAF  
122.8  
NORCAL DEP CON  
127.15 307.125



SW-2, 07 OCT 2021 to 04 NOV 2021

SW-2, 07 OCT 2021 to 04 NOV 2021

**DEPARTURE ROUTE DESCRIPTION**

**TAKEOFF RUNWAY 9:** Climb heading 086° to 700, then right turn direct CHAAN, thence. . . .

**TAKEOFF RUNWAY 20:** Climb heading 198° to 700, then direct CHAAN, thence. . . .

. . . . on track 207° to cross GARLK at or above 5000, then on (transition).

CHAWZ TRANSITION (GARLK1.CHAWZ)  
DUBSS TRANSITION (GARLK1.DUBSS)  
SALINAS TRANSITION (GARLK1.SNS)  
SAPID TRANSITION (GARLK1.SAPID)  
WIGGL TRANSITION (GARLK1.WIGGL)

# GARLK ONE DEPARTURE (RNAV)

(GARLK1.GARLK) 13SEP18

WATSONVILLE, CALIFORNIA  
WATSONVILLE MUNI (WVI)