

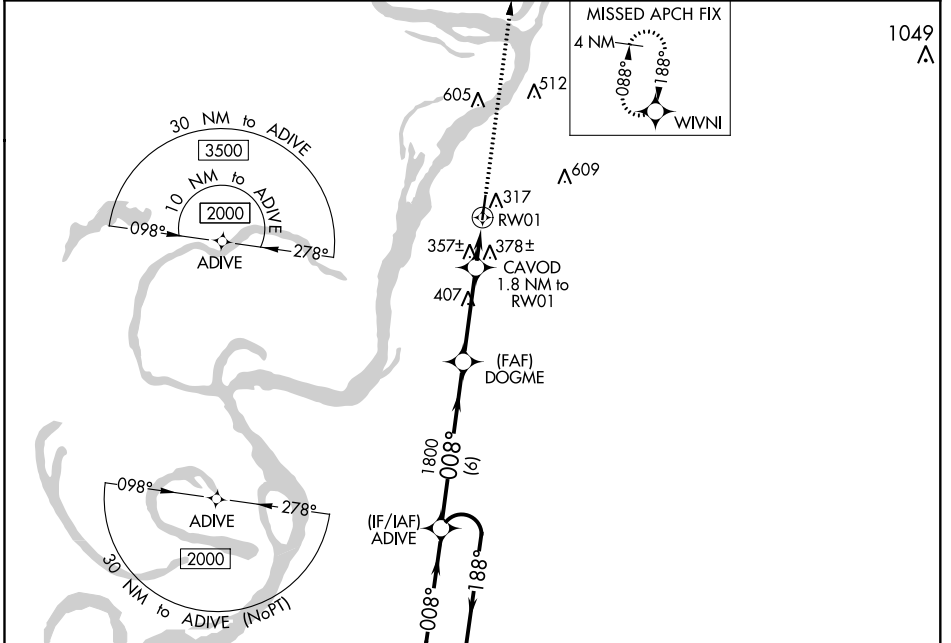
WAAS CH 66030 W01A	APP CRS 008°	Rwy Idg TDZE 104 Apt Elev 107	4702
--	------------------------	---	-------------

RNAV (GPS) RWY 1

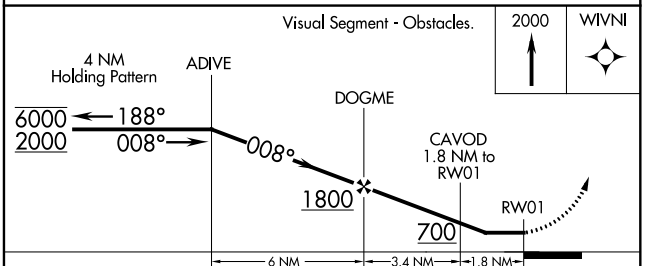
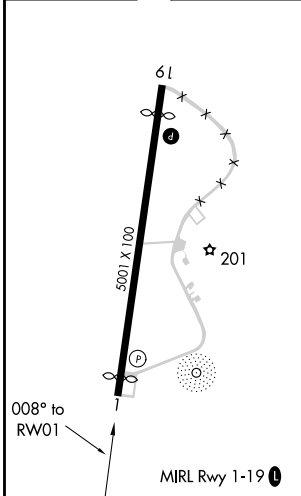
VICKSBURG MUNI (VKS)

RNP APCH.	<p>▼ Circling NA for Cat D west of Rwy 1-19. Procedure NA at night. ▲ Rwy 1 helicopter visibility reduction below 1 SM NA.</p>	<p>MISSED APPROACH: Climb to 2000 direct WIVNI and hold.</p>
-----------	--	--

AWOS-3 118.85	MEMPHIS CENTER 132.5 259.1	UNICOM 122.8 (CTAF) 0
-------------------------	--------------------------------------	---------------------------------



ELEV 107	TDZE 104
----------	----------



CATEGORY	A	B	C	D
LP MDA	620-1	516 (600-1)	620-1 3/8	516 (600-1 1/2)
LNAV MDA	640-1	536 (600-1)	640-1 1/2	536 (600-1 1/2)
CIRCLING	700-1	593 (600-1)	700-1 1/2 593 (600-1 1/2)	860-2 1/2 753 (800-2 1/2)

SC-4, 04 NOV 2021 to 02 DEC 2021

SC-4, 04 NOV 2021 to 02 DEC 2021

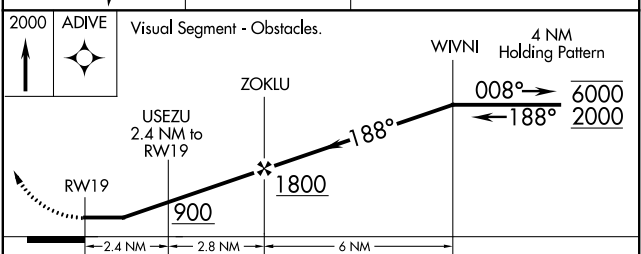
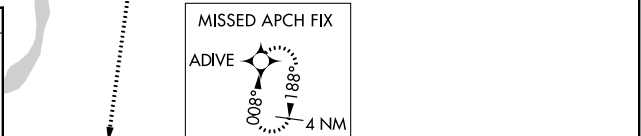
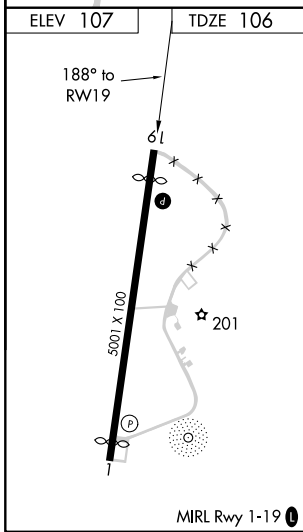
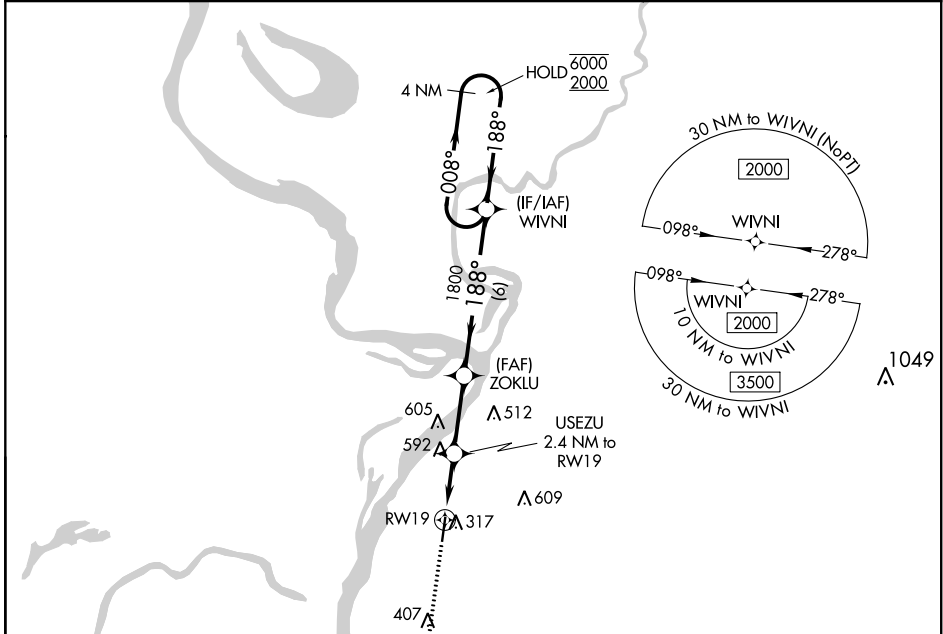
WAAS CH 60932 W19A	APP CRS 188°	Rwy Idg TDZE 106 Apt Elev 107	4529
--	------------------------	---	-------------

RNAV (GPS) RWY 19

VICKSBURG MUNI (VKS)

RNP APCH.	<p>⚠ Circling NA for Cat D west of Rwy 1-19. Procedure NA at night. Rwy 19 helicopter visibility reduction below 1 SM NA.</p>	<p>MISSED APPROACH: Climb to 2000 direct ADIVE and hold.</p>
-----------	--	--

AWOS-3 118.85	MEMPHIS CENTER 132.5 259.1	UNICOM 122.8 (CTAF) 📻
-------------------------	--------------------------------------	--



CATEGORY	A	B	C	D
LP MDA	660-1	554 (600-1)	660-1 ⁵ / ₈	554 (600-1 ⁵ / ₈)
LNAV MDA	860-1 754 (800-1)	860-1 ¹ / ₄ 754 (800-1 ¹ / ₄)	860-2	754 (800-2)
CIRCLING	860-1 753 (800-1)	860-1 ¹ / ₄ 753 (800-1 ¹ / ₄)	860-2 ¹ / ₄ 753 (800-2 ¹ / ₄)	860-2 ¹ / ₂ 753 (800-2 ¹ / ₂)

SC-4, 04 NOV 2021 to 02 DEC 2021

SC-4, 04 NOV 2021 to 02 DEC 2021