

LOC/DME I-VIS <b>108.5</b> Chan 22	APP CRS <b>301°</b>	Rwy ldg TDZE Apt Elev	<b>5635</b> <b>295</b> <b>295</b>
--	------------------------	-----------------------------	---

# ILS or LOC RWY 30

VISALIA MUNI (VIS)

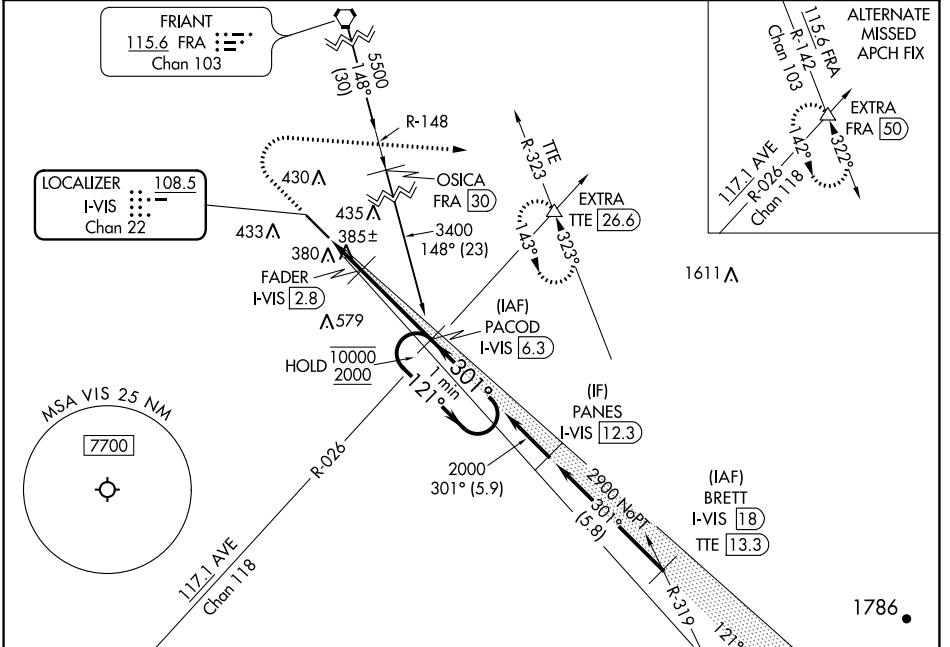
DME required.

▼ For inop ALS, increase S-LOC 30  
▲ NA Cat C/D visibility to 1 SM.

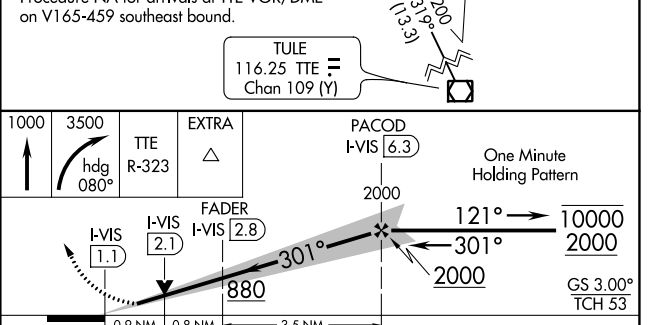
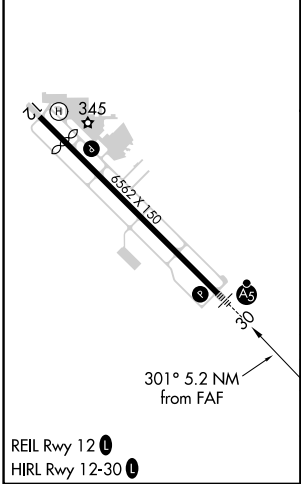
MALSR

MISSED APPROACH: Climb to 1000 then climbing right turn to 3500 on heading 080° and on TTE VOR/DME R-323 to EXTRA INT/TTE 26.6 DME and hold, continue climb-in-hold to 3500.

AWOS-3PT <b>119.925</b>	FRESNO APP CON <b>118.5</b>	CLNC DEL <b>118.5</b>	UNICOM <b>123.05</b> (CTAF) <b>0</b>
----------------------------	--------------------------------	--------------------------	---



ELEV 295	<b>D</b> TDZE 295
----------	-------------------



CATEGORY	A	B	C	D
S-ILS 30	502-½ 207 (300-½)			
S-LOC 30	640-½ 345 (400-½)		640-⅝ 345 (400-⅝)	
<b>C</b> CIRCLING	720-1 425 (500-1)	760-1 465 (500-1)	760-1½ 465 (500-1½)	940-2 645 (700-2)

SW-2, 22 FEB 2024 to 21 MAR 2024

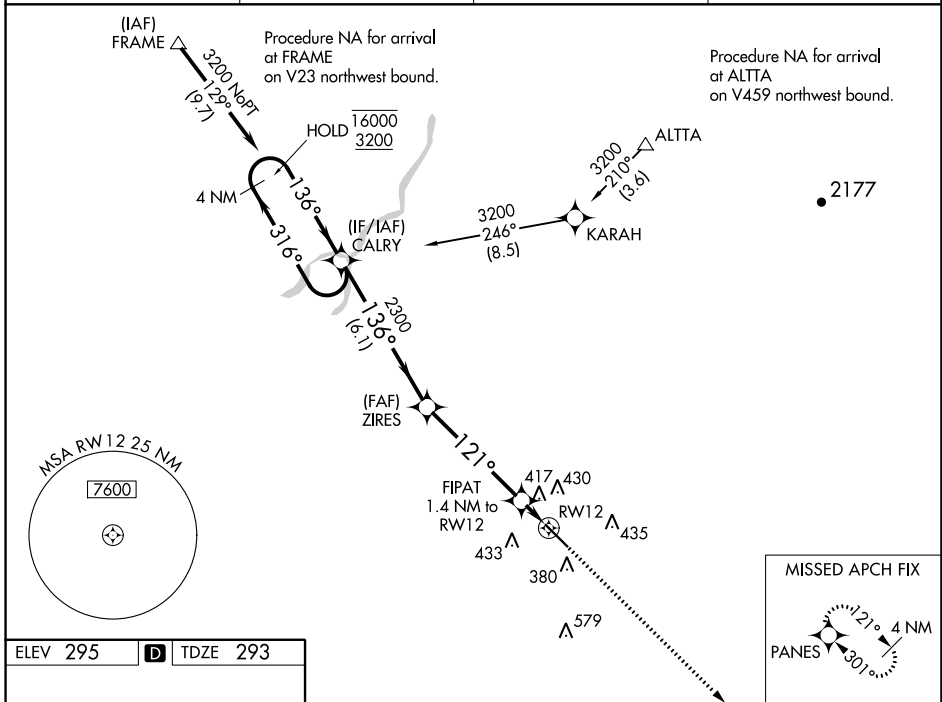
SW-2, 22 FEB 2024 to 21 MAR 2024

WAAS CH <b>82423</b> <b>W12A</b>	APP CRS <b>121°</b>	Rwy Idg TDZE Apt Elev	<b>5635</b> <b>293</b> <b>295</b>
--	------------------------	-----------------------------	---

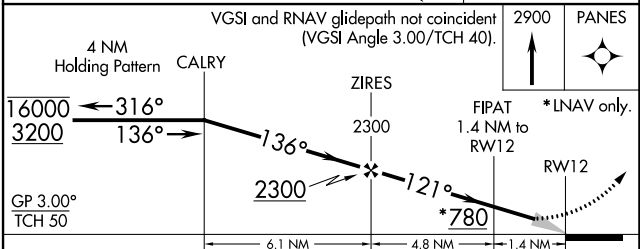
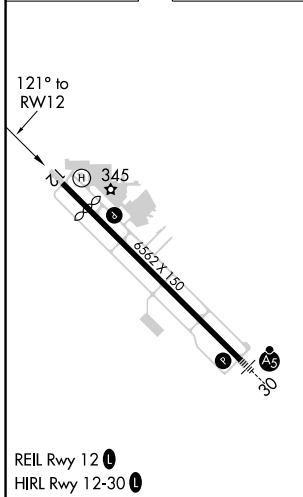
# RNAV (GPS) RWY 12

VISALIA MUNI (VIS)

RNP APCH.		MISSED APPROACH: Climb to 2900 direct PANES and hold.	
<p>▼ For uncompensated Baro-VNAV systems, LNAV/VNAV NA below -15°C or above 54°C.</p> <p>▲</p>			
AWOS-3PT <b>119.925</b>	FRESNO APP CON <b>118.5</b>	CLNC DEL <b>118.5</b>	UNICOM <b>123.05 (CTAF) 0</b>



ELEV 295	<b>D</b>	TDZE 293
----------	----------	----------



CATEGORY	A	B	C	D
LPV DA		543-3/4	250 (300-3/4)	
LNAV/VNAV DA		697-1 1/8	404 (500-1 1/8)	
LNAV MDA	680-1	387 (400-1)	680-1 1/8	387 (400-1 1/8)
<b>C</b> CIRCLING	720-1 425 (500-1)	760-1 465 (500-1)	760-1 1/2 465 (500-1 1/2)	940-2 645 (700-2)

SW-2, 22 FEB 2024 to 21 MAR 2024

SW-2, 22 FEB 2024 to 21 MAR 2024

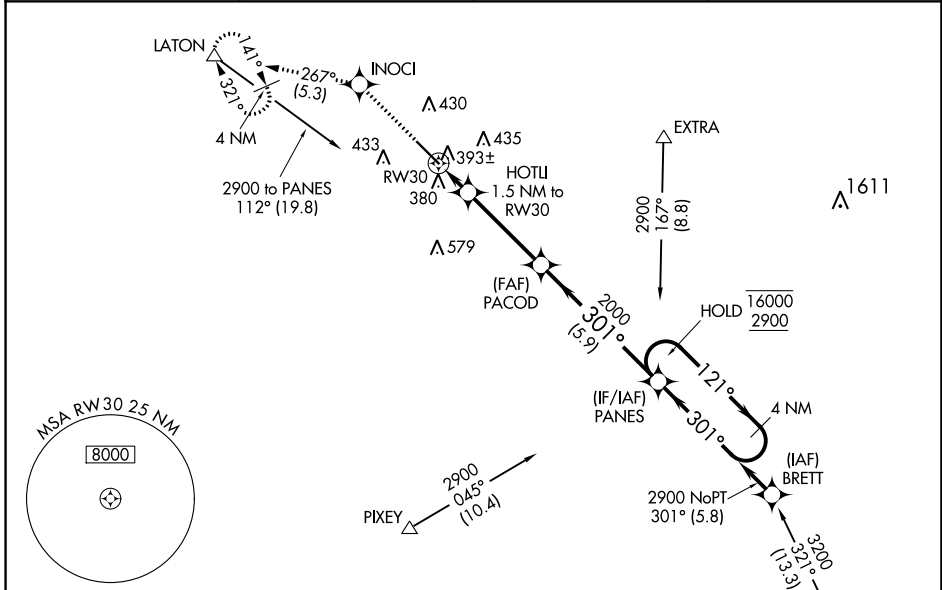
WAAS CH <b>77623</b> <b>W30A</b>	APP CRS <b>301°</b>	Rwy Idg TDZE Apt Elev	<b>5635</b> <b>295</b> <b>295</b>
--	------------------------	-----------------------------	---

# RNAV (GPS) RWY 30

VISALIA MUNI (VIS)

RNP APCH.	MALSR	MISSED APPROACH: Climb to 3000 direct INOCI and on track 267° to LATON and hold, continue climb-in-hold to 3000.
<p><b>⚠</b> For uncompensated Baro-VNAV systems, LNAV/VNAV NA below -15°C or above 54°C. For inop ALS, increase LNAV/VNAV all Cats visibility to ¾ SM, LNAV Cats C/D to 1 SM.</p>		

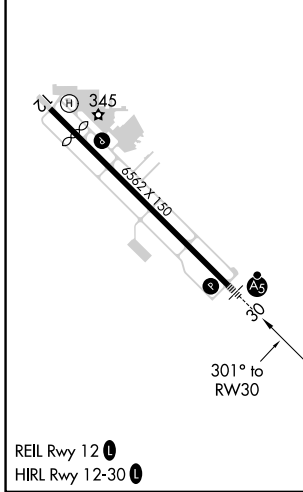
AWOS-3PT <b>119.925</b>	FRESNO APP CON <b>118.5</b>	CLNC DEL <b>118.5</b>	UNICOM <b>123.05 (CTAF)</b>
----------------------------	--------------------------------	--------------------------	--------------------------------



SW-2, 22 FEB 2024 to 21 MAR 2024

SW-2, 22 FEB 2024 to 21 MAR 2024

ELEV 295	<b>D</b>	TDZE 295
----------	----------	----------



3000	INOCI	LATON	PANES	4 NM Holding Pattern
↑	✧	tr 267°		
*LNAV only.		HOTLI 1.5 NM to RW30	2000	121° → 16000 ← 301° 2900
	RW30	*1 NM to RW30	820*	GP 3.00° TCH 53
	1 NM	0.5 NM	3.7 NM	5.9 NM
CATEGORY	A	B	C	D
LPV DA		502-½	207 (300-½)	
LNAV/VNAV DA		554-½	259 (300-½)	
LNAV MDA	660-½	365 (400-½)	660-⅝	365 (400-⅝)
<b>C</b> CIRCLING	720-1 425 (500-1)	760-1 465 (500-1)	760-1½ 465 (500-1½)	940-2 645 (700-2)