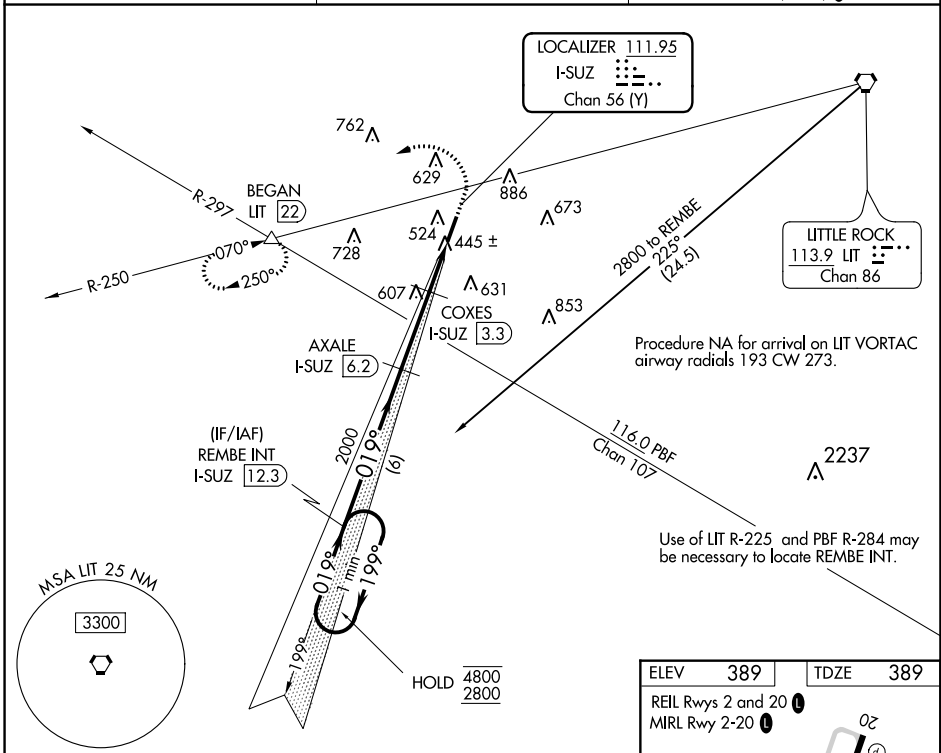


LOC/DME I-SUZ 111.95 Chan 56 (Y)	APP CRS 019°	Rwy Idg TDZE Apt Elev	5002 389 389
--	------------------------	-----------------------------	---

ILS or LOC RWY 2

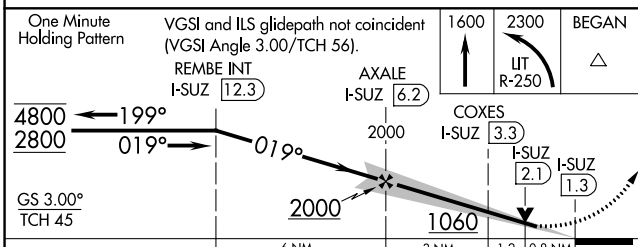
SALINE COUNTY RGNL (SUZ)

DME required for LOC only.		MISSED APPROACH: Climb to 1600 then climbing left turn to 2300 on LIT VORTAC R-250 to BEGAN INT/LIT 22 DME and hold.
AWOS-3 132.125	LITTLE ROCK APP CON 119.5 306.2	UNICOM 122.8 (CTAF) 0



SC-1, 22 FEB 2024 to 21 MAR 2024

SC-1, 22 FEB 2024 to 21 MAR 2024



ELEV 389	TDZE 389
REIL Rwy 2 and 20	MIRL Rwy 2-20

Knots	60	90	120	150	180
Min:Sec	4:54	3:16	2:27	1:58	1:38

CATEGORY	A	B	C	D
S-ILS 2		639-3/4	250 (300-3/4)	
S-LOC 2	700-1	311 (400-1)	700-7/8	311 (400-7/8)
CIRCLING	940-1 551 (600-1)	1080-1 691 (700-1)	1200-2 1/2 811 (900-2 1/2)	1200-2 3/4 811 (900-2 3/4)

WAAS CH 58209 W02A	APP CRS 019°	Rwy Idg TDZE 389 Apt Elev 389	5002 389 389
--	------------------------	---	---

RNAV (GPS) RWY 2

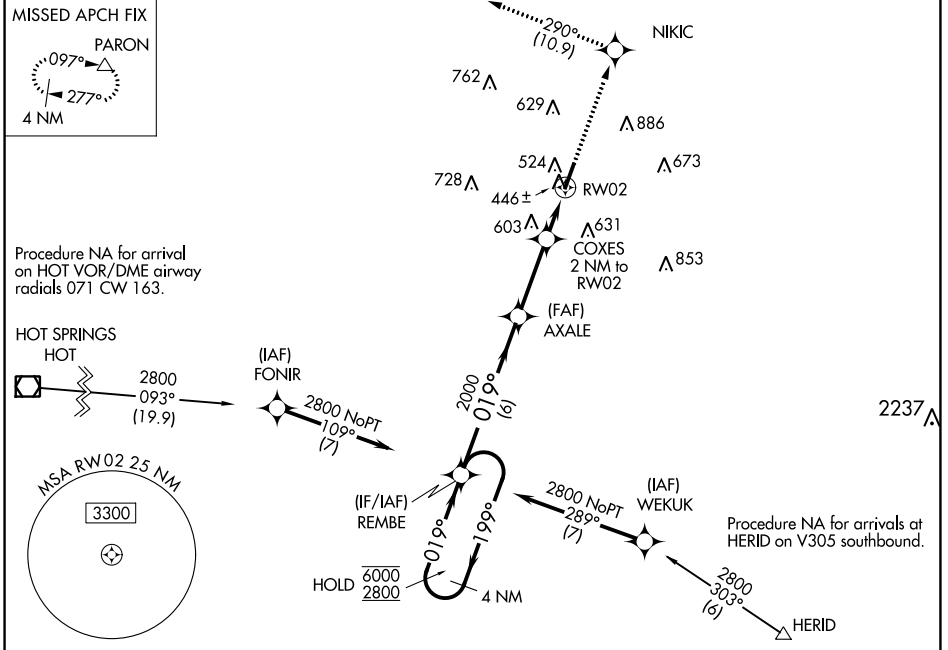
SALINE COUNTY RGNL (SUZ)

RNP APCH - GPS.

▼ Rwy 2 helicopter visibility reduction below 3/4 SM NA.
 ▲ For uncompensated Baro-VNAV systems, LNAV/VNAV NA below -15°C or above 54°C.

MISSED APPROACH: Climb to 2600 direct NIKIC and track 290° to PARON and hold.

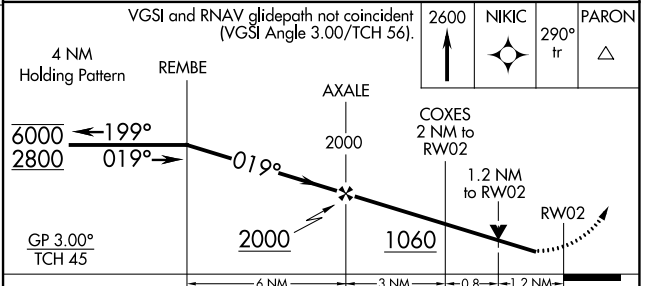
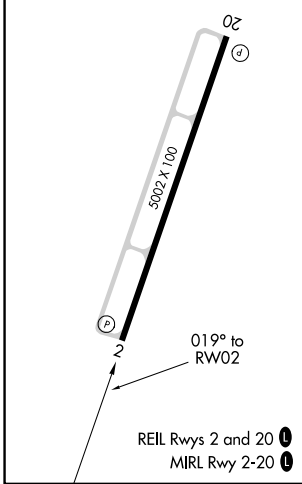
AWOS-3 132.125	LITTLE ROCK APP CON 119.5 306.2	UNICOM 122.8 (CTAF) 0
--------------------------	---	---------------------------------



SC-1, 22 FEB 2024 to 21 MAR 2024

SC-1, 22 FEB 2024 to 21 MAR 2024

ELEV 389	TDZE 389
-----------------	-----------------



CATEGORY	A	B	C	D
LPV DA		639-3/4	250 (300-3/4)	
LNAV/VNAV DA		670-7/8	281 (300-7/8)	
LNAV MDA	820-1	431 (500-1)	820-1 1/4	431 (500-1 1/4)
CIRCLING	940-1 551 (600-1)	1080-1 691 (700-1)	1200-2 1/2 811 (900-2 1/2)	1200-2 3/4 811 (900-2 3/4)

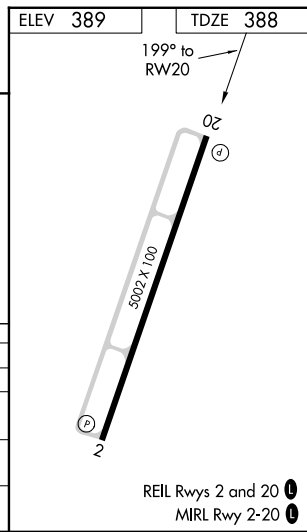
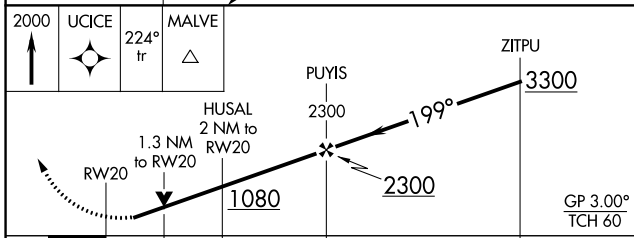
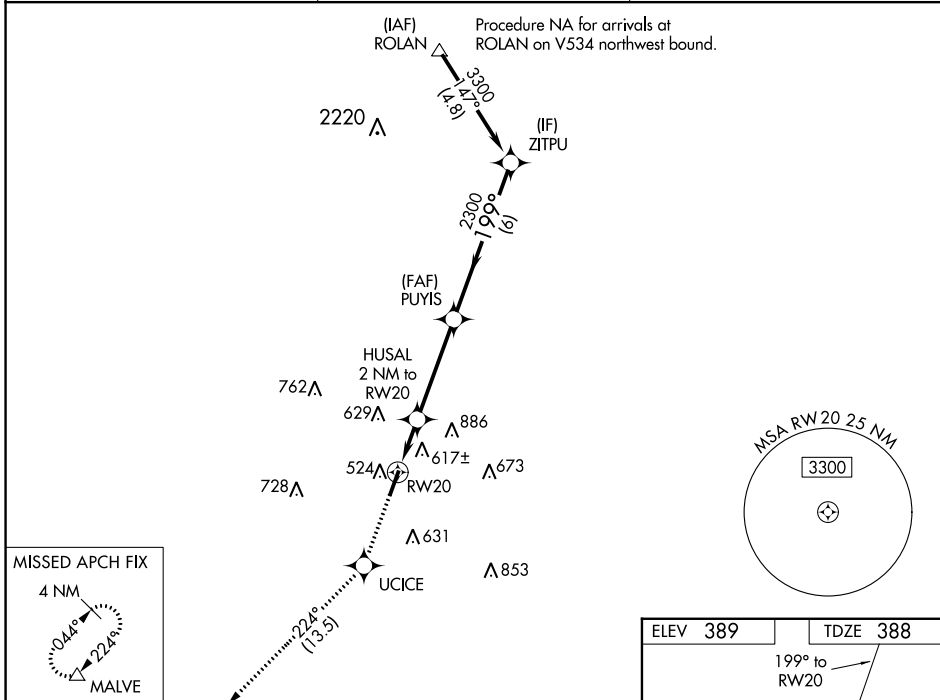
WAAS CH 40309 W20A	APP CRS 199°	Rwy Idg TDZE Apt Elev	5002 388 389
--	------------------------	-----------------------------	---

RNAV (GPS) RWY 20

SALINE COUNTY RGNL (SUZ)

RNP APCH - GPS.	MISSED APPROACH: Climb to 2000 direct UCICE and track 224° to MALVE and hold.
<p>▽ Rwy 20 helicopter visibility reduction below ¾ SM NA.</p> <p>⚠ For uncompensated Baro-VNAV systems, LNAV/VNAV NA below -15°C or above 54°C.</p>	

AWOS-3 132.125	LITTLE ROCK APP CON 119.5 306.2	UNICOM 122.8 (CTAF)
--------------------------	---	-------------------------------



CATEGORY	A	B	C	D
LPV DA		639-¾	251 (300-¾)	
LNAV/VNAV DA		789-1½	401 (400-1½)	
LNAV MDA	880-1	492 (500-1)	880-1¾	492 (500-1¾)
C CIRCLING	940-1 551 (600-1)	1080-1 691 (700-1)	1200-2½ 811 (900-2½)	1200-2¾ 811 (900-2¾)

SC-1, 22 FEB 2024 to 21 MAR 2024

SC-1, 22 FEB 2024 to 21 MAR 2024