

AARCH TWO ARRIVAL (RNAV)
(AARCH,AARCH2) 17AUG17

(AARCH,AARCH2) 1722Z
AARCH TWO ARRIVAL (RNAV)

ST. LOUIS APP CON
132.125 360.6
D-ATIS
125.025 379.925

JARKE
VERTICAL NAVIGATION
PLANNING INFORMATION
TURBOJETS: Expect FL280

ROBERTS
RBS

BASCO
GORDO

HONKK
FL310 280K

BRICKYARD
VHP

AKBAR
PRUET

AARCH
11000 280K

NOTE: This STAR applicable to turbojet aircraft only.
NOTE: RADAR required.
NOTE: DME/DME/IRU or GPS required.
NOTE: RNAV 1.

AL-360 (FAA)

ST LOUIS LAMBERT INTL (STL)
ST LOUIS, MISSOURI

ST LOUIS, MISSOURI
ST LOUIS LAMBERT INTL (STL)



BUELL
5000 210K

HRBEE
5000 210K

GETEE
8000 210K
7000

CHOTO
10000
8000

OSHIE
8000 250K
7000

EADDS
9000
8000

FDRKO
7000
6000

JAAKK
11000
10000

KRIYA
15000 280K
11000

SSKOT
10000
9000

PETTI
4000 249°
4000 226°

AARCH
11000 280K

UKAAY
FL310 280K

301°
4000
(5)

(3)

(4)

(11)

(15)

(6)

(6)

(17)

(14)

(33)

(8)

(8)

(82)

10 NM

072°

252°

252°

252°

253°

253°

253°

253°

253°

NOTE: Chart not to scale.

(NARRATIVE ON FOLLOWING PAGE)

ARRIVAL ROUTE DESCRIPTION

AKBAR TRANSITION (AKBAR.AARCH2)

BRICKYARD TRANSITION (VHP.AARCH2)

ROBERTS TRANSITION (RBS.AARCH2)

From AARCH on track 255° to PETTI.

LANDING RUNWAYS 11/12L/R: From PETTI on track 249° to cross KRIYA at or above 11000 and at or below 15000 and at 280K, then on track 249° to cross JAAKK at or above 10000 and at or below 11000, then on track 249° to cross CHOTO at or above 8000 and at or below 10000, then on track 301° to cross GETEE at or above 7000 and at or below 8000 and at 210K, then on track 301° to cross HRBEE at or above 5000 and at 210K, then on track 301° to cross BUELL at 5000 and at 210K. Expect RADAR vectors to final approach course. If not received by BUELL, track via 301°.

LANDING RUNWAYS 29/30L/R: From PETTI on track 226° to cross SSKOT at or above 9000 and at or below 10000, then on track 226° to cross EADDS at or above 8000 and at or below 9000, then on track 226° to cross OSHIE at or above 7000 and at or below 8000, then on track 226° to cross FDRKO at or above 6000 and at or below 7000, then via assigned instrument approach procedure. If approach clearance not received by FDRKO, track via 226°, expect RADAR vectors to final approach course.

NC-3, 22 FEB 2024 to 21 MAR 2024

NC-3, 22 FEB 2024 to 21 MAR 2024

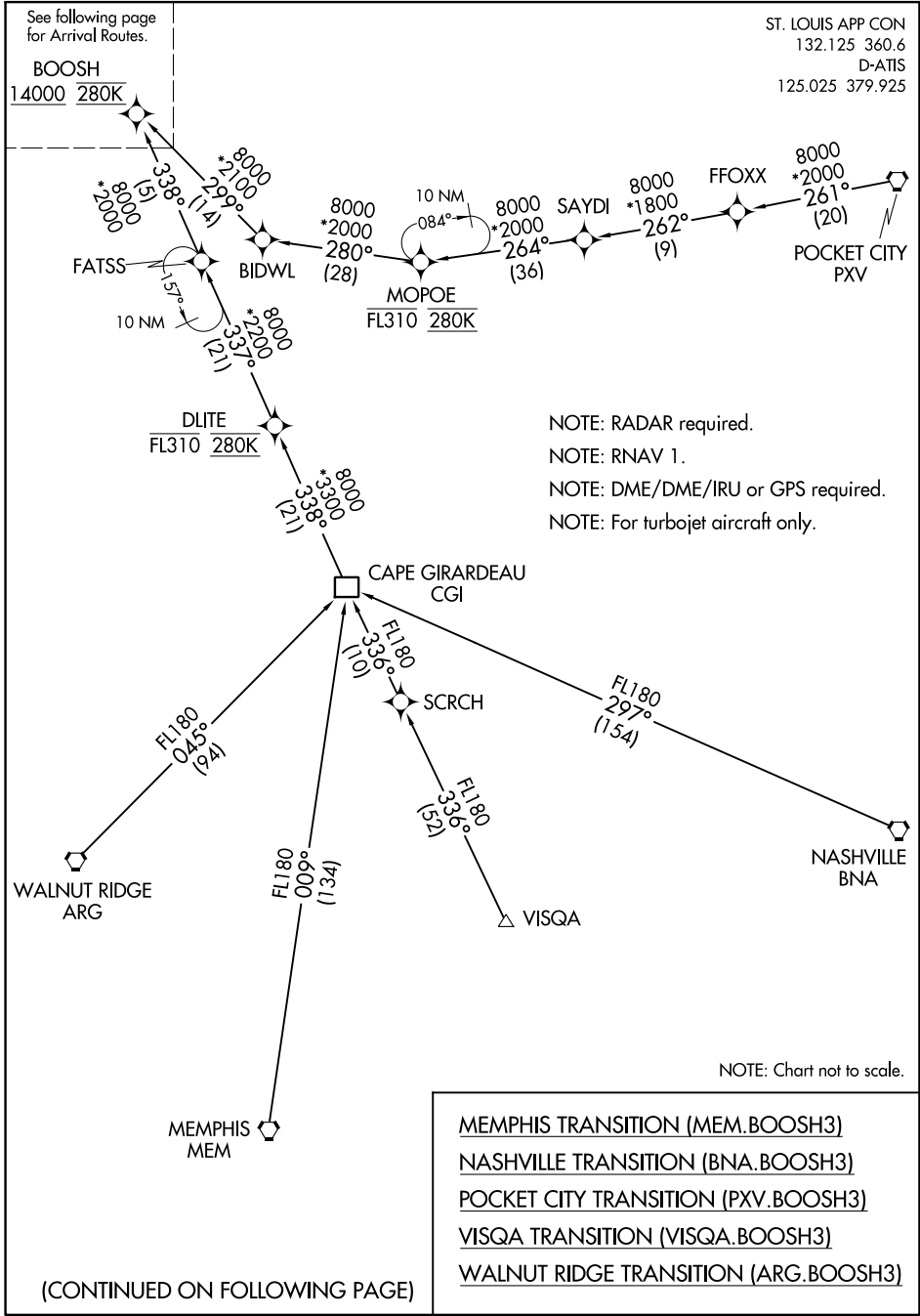
BOOSH THREE ARRIVAL (RNAV) Transition Routes

ST LOUIS LAMBERT INTL (STL)
ST. LOUIS, MISSOURI

See following page
for Arrival Routes.

ST. LOUIS APP CON
132.125 360.6
D-ATIS
125.025 379.925

BOOSH
14000 280K



NOTE: RADAR required.
 NOTE: RNAV 1.
 NOTE: DME/DME/IRU or GPS required.
 NOTE: For turbojet aircraft only.

NOTE: Chart not to scale.

- MEMPHIS TRANSITION (MEM.BOOSH3)
- NASHVILLE TRANSITION (BNA.BOOSH3)
- POCKET CITY TRANSITION (PXV.BOOSH3)
- VISQA TRANSITION (VISQA.BOOSH3)
- WALNUT RIDGE TRANSITION (ARG.BOOSH3)

(CONTINUED ON FOLLOWING PAGE)

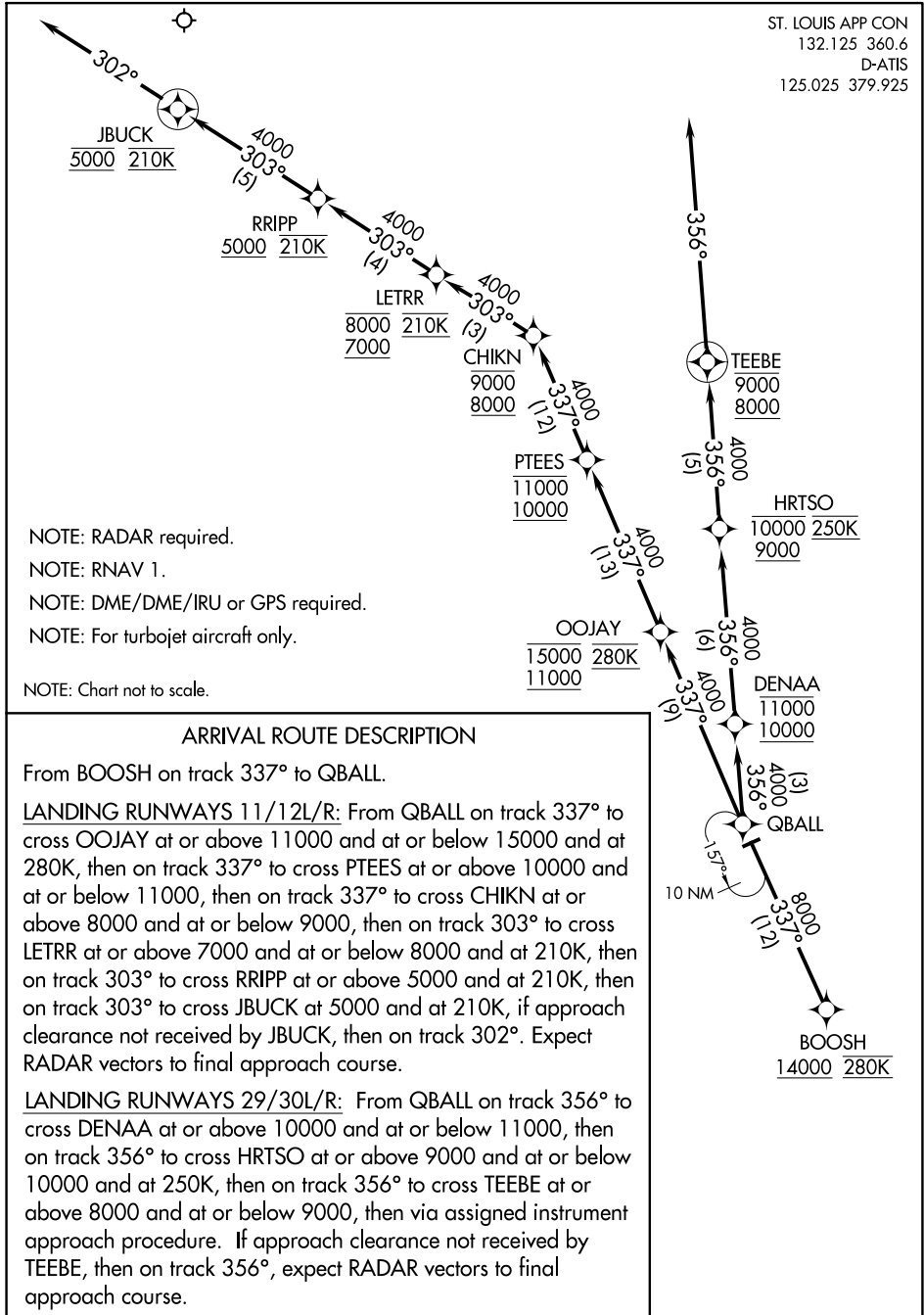
NC-3, 22 FEB 2024 to 21 MAR 2024

NC-3, 22 FEB 2024 to 21 MAR 2024

BOOSH THREE ARRIVAL (RNAV) Arrival Routes

ST. LOUIS, MISSOURI

ST. LOUIS APP CON
132.125 360.6
D-ATIS
125.025 379.925



- NOTE: RADAR required.
- NOTE: RNAV 1.
- NOTE: DME/DME/IRU or GPS required.
- NOTE: For turbojet aircraft only.
- NOTE: Chart not to scale.

ARRIVAL ROUTE DESCRIPTION

From BOOSH on track 337° to QBALL.

LANDING RUNWAYS 11/12L/R: From QBALL on track 337° to cross OOJAY at or above 11000 and at or below 15000 and at 280K, then on track 337° to cross PTEES at or above 10000 and at or below 11000, then on track 337° to cross CHIKN at or above 8000 and at or below 9000, then on track 303° to cross LETRR at or above 7000 and at or below 8000 and at 210K, then on track 303° to cross RRIPP at or above 5000 and at 210K, then on track 303° to cross JBUCK at 5000 and at 210K, if approach clearance not received by JBUCK, then on track 302°. Expect RADAR vectors to final approach course.

LANDING RUNWAYS 29/30L/R: From QBALL on track 356° to cross DENAA at or above 10000 and at or below 11000, then on track 356° to cross HRTSO at or above 9000 and at or below 10000 and at 250K, then on track 356° to cross TEEBE at or above 8000 and at or below 9000, then via assigned instrument approach procedure. If approach clearance not received by TEEBE, then on track 356°, expect RADAR vectors to final approach course.

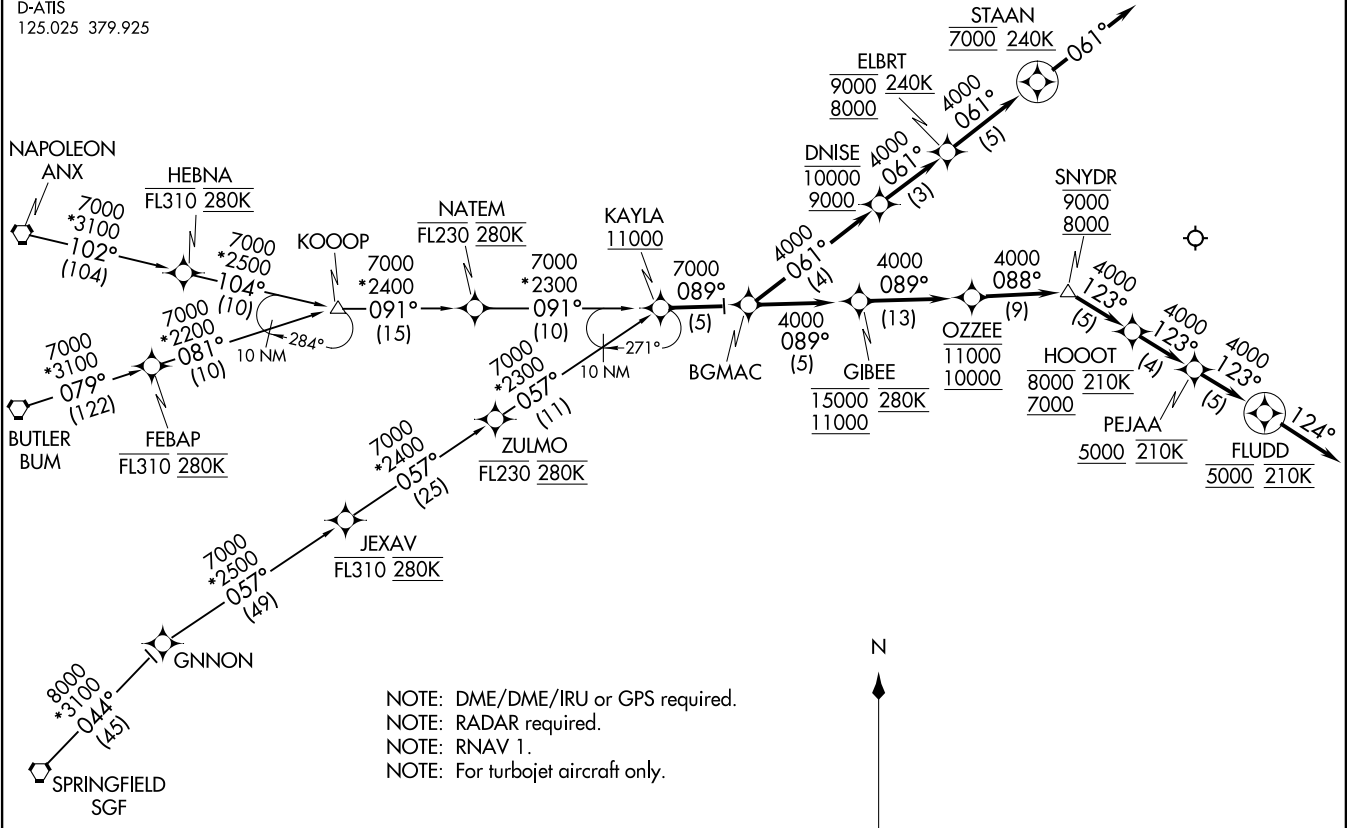
BOOSH THREE ARRIVAL (RNAV) Arrival Routes

NC-3, 22 FEB 2024 to 21 MAR 2024

NC-3, 22 FEB 2024 to 21 MAR 2024

KAYLA THREE ARRIVAL (RNAV)
(KAYLA.KAYLA3) 1200CT7

ST LOUIS APP CON
132.125 360.6
D-ATIS
125.025 379.925



ST LOUIS LAMBERT INTL (STL)
ST LOUIS, MISSOURI

- NOTE: DME/DME/IRU or GPS required.
- NOTE: RADAR required.
- NOTE: RNAV 1.
- NOTE: For turbojet aircraft only.

(NARRATIVE ON FOLLOWING PAGE)



NOTE: Chart not to scale.

(KAYLA.KAYLA3) 18312
KAYLA THREE ARRIVAL (RNAV)

A1-360 (FAA)

ST LOUIS LAMBERT INTL (STL)
ST LOUIS, MISSOURI

ARRIVAL ROUTE DESCRIPTION

BUTLER TRANSITION (BUM.KAYLA3)

KOOOP TRANSITION (KOOOP.KAYLA3)

NAPOLEON TRANSITION (ANX.KAYLA3)

SPRINGFIELD TRANSITION (SGF.KAYLA3)

From KAYLA on track 089° to BGMAC. Thence. . . .

LANDING RUNWAYS 11/12L/R: From BGMAC on track 061° to cross DNISE at or above 9000 or at or below 10000, then on track 061° to cross ELBRT at or above 8000 and at or below 9000 and at or above 240K, then on track 061° to cross STAAN at 7000 and at or above 240K, then on assigned approach procedure. If approach clearance not received by STAAN, then on track 061°, expect RADAR vectors to final approach course.

LANDING RUNWAYS 29/30L/R: From BGMAC on track 089° to cross GIBEE at or above 11000 and at or below 15000 and at 280K, then on track 089° to cross OZZEE at or above 10000 and at or below 11000, then on track 088° to cross SNYDR at or above 8000 and at or below 9000, then on track 123° to cross HOOOT at or above 7000 and at or below 8000 and at 210K, then on track 123° to cross PEJAA at or above 5000 and at 210K, then on track 123° to cross FLUDD at 5000 and at 210K. If approach clearance not received by FLUDD, then on track 124°, expect RADAR vectors to final approach course.

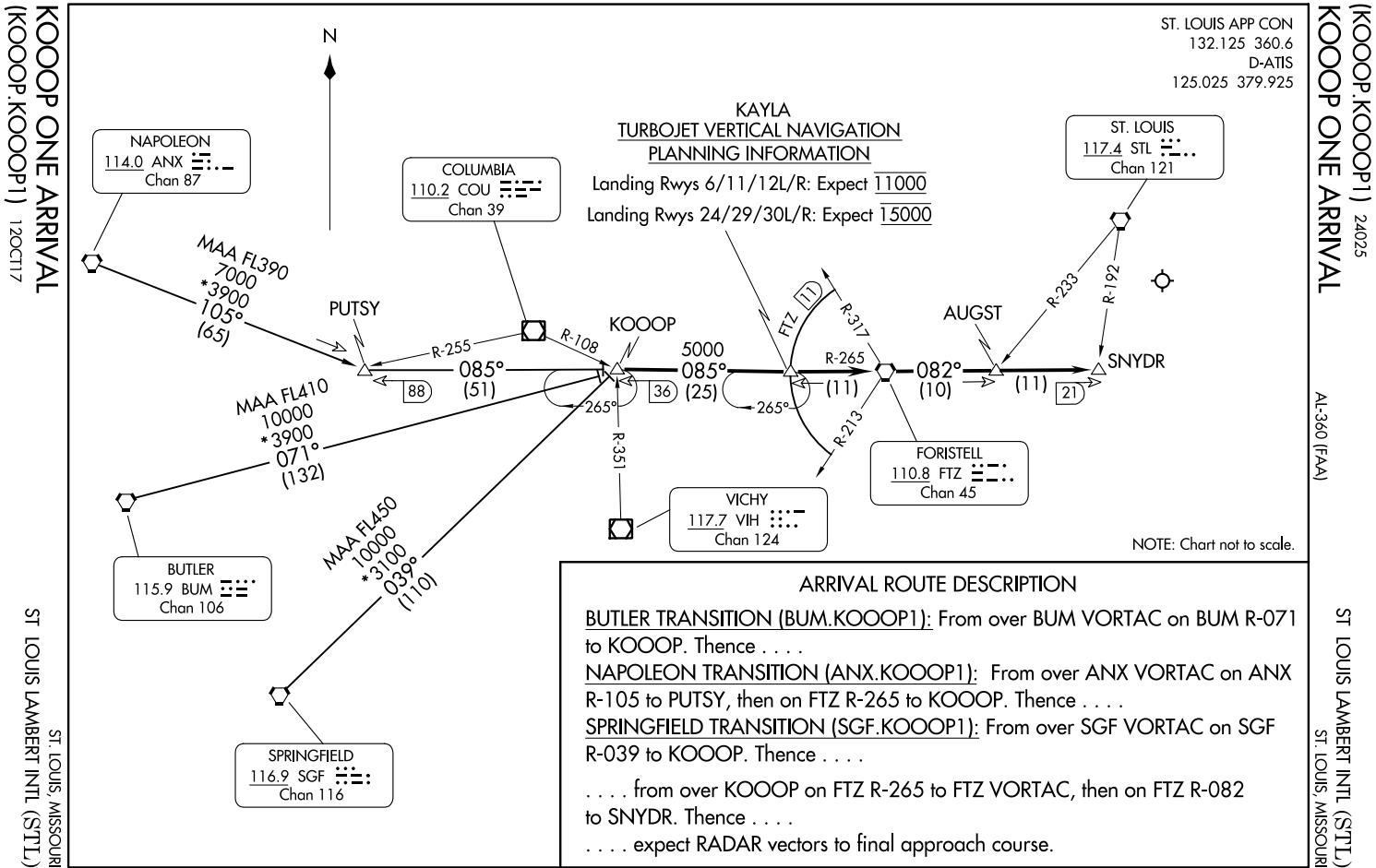
NC-3, 22 FEB 2024 to 21 MAR 2024

NC-3, 22 FEB 2024 to 21 MAR 2024

ST. LOUIS APP CON
132.125 360.6
D-ATIS
125.025 379.925

KAYLA
TURBOJET VERTICAL NAVIGATION
PLANNING INFORMATION

Landing Rwys 6/11/12L/R: Expect 11000
Landing Rwys 24/29/30L/R: Expect 15000



KOOOP ONE ARRIVAL
(KOOOP.KOOOP1) 120CT17

(KOOOP.KOOOP1) 24025
KOOOP ONE ARRIVAL

ST. LOUIS, MISSOURI
ST. LOUIS LAMBERT INTL (STL)

ST. LOUIS LAMBERT INTL (STL)
ST. LOUIS, MISSOURI

AL-360 (FAA)

NOTE: Chart not to scale.

ARRIVAL ROUTE DESCRIPTION

BUTLER TRANSITION (BUM.KOOOP1): From over BUM VORTAC on BUM R-071 to KOOOP. Thence

NAPOLEON TRANSITION (ANX.KOOOP1): From over ANX VORTAC on ANX R-105 to PUTSY, then on FTZ R-265 to KOOOP. Thence

SPRINGFIELD TRANSITION (SGF.KOOOP1): From over SGF VORTAC on SGF R-039 to KOOOP. Thence

. . . . from over KOOOP on FTZ R-265 to FTZ VORTAC, then on FTZ R-082 to SNYDR. Thence

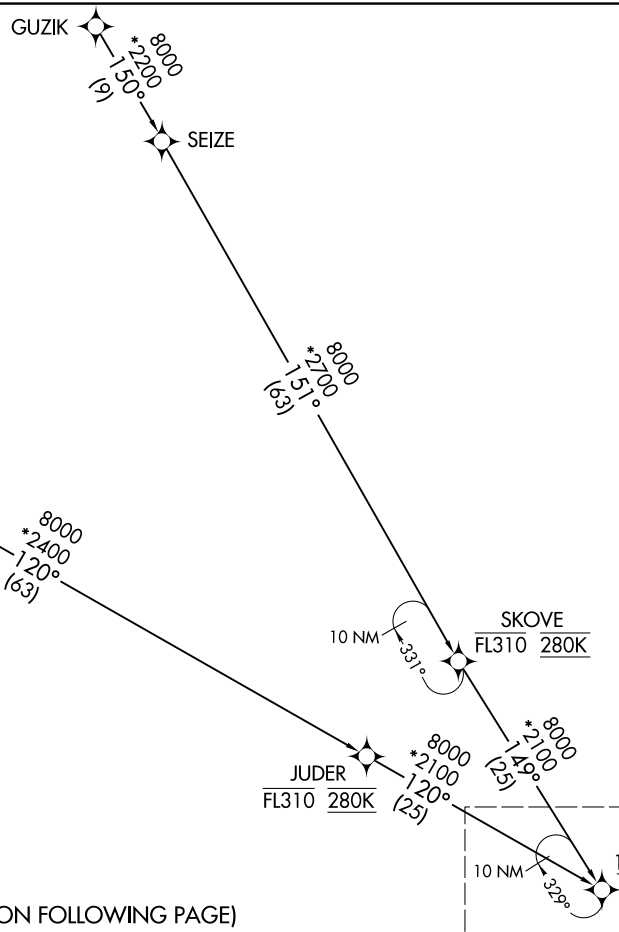
. . . . expect RADAR vectors to final approach course.

ST LOUIS APP CON
132.125 360.6
D-ATIS
125.025 379.925

(LORLE:LORLE3) 23166
LORLE THREE ARRIVAL (RNAV)

AT-360 (FAA)
Transition Routes

ST LOUIS LAMBERT INTL (STL)
ST LOUIS, MISSOURI



GUZIK TRANSITION (GUZIK.LORLE3)
KIRKSVILLE TRANSITION (IRK.LORLE3)
SKOVE TRANSITION (SKOVE.LORLE3)

KIRKSVILLE
IRK

NOTE: DME/DME/IRU or GPS required.
 NOTE: RADAR required.
 NOTE: For turbojet aircraft only.
 NOTE: RNAV-1.

NOTE: Chart not to scale.

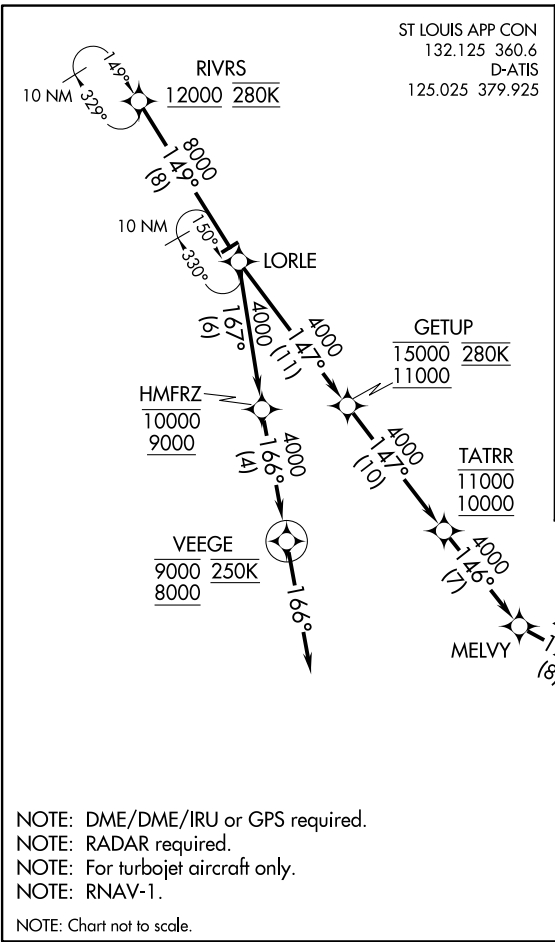
(CONTINUED ON FOLLOWING PAGE)

LORLE THREE ARRIVAL (RNAV) Transition Routes
(LORLE:LORLE3) 07DEC17

ST LOUIS, MISSOURI
ST LOUIS LAMBERT INTL (STL)

LORLE THREE ARRIVAL (RNAV)
 (LORLE:LORLE3) 07/DEC17

ST LOUIS MISSOURI
 ST LOUIS LAMBERT INTL (STL)



ARRIVAL ROUTE DESCRIPTION

From RIVRS on track 149° to LORLE.

LANDING RUNWAYS 11/12L/R: From LORLE on track 167° to cross HMFRZ at or above 9000 and at or below 10000, then on track 166° to cross VEEGE at or above 8000 and at or below 9000 and at 250K, then via assigned instrument approach procedure. If clearance not received by VEEGE, then on track 166°, expect RADAR vectors to final approach course.

LANDING RUNWAYS 29/30L/R: From LORLE on track 147° to cross GETUP at or above 11000 and at or below 15000 and at 280K, then on track 147° to cross TATTR at or above 10000 and at or below 11000, then on track 146° to MELVY, then on track 123° to cross BRDWL at or above 8000 and at or below 9000, then on track 123° to cross ENNEE at or above 7000 and at or below 8000 and at 210K, then on track 123° to cross JYAAR at or above 5000 and at or below 210K, then on track 123° to cross DOBLZ at 5000 and at 210K. If approach clearance not received by DOBLZ, then on track 124°. Expect RADAR vectors to final approach course.



LORLE THREE ARRIVAL (RNAV)
 (LORLE:LORLE3) 231166
 AT-360 (FAA)
 ST LOUIS MISSOURI
 ST LOUIS LAMBERT INTL (STL)