

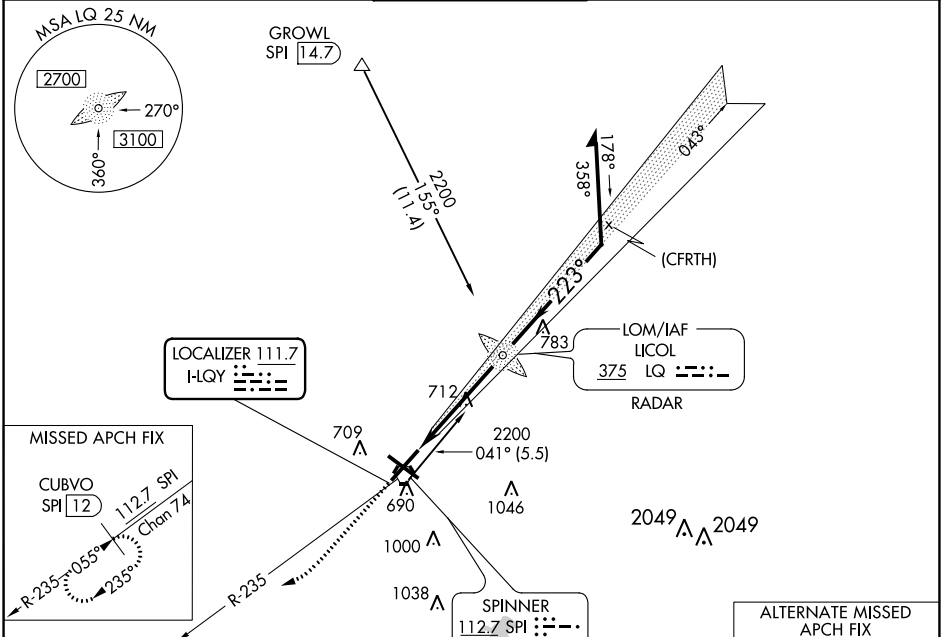
LOC I-LQY 111.7	APP CRS 223°	Rwy Idg TDZE Apt Elev	8001 598 598
---------------------------	------------------------	-----------------------------	---

ILS or LOC RWY 22

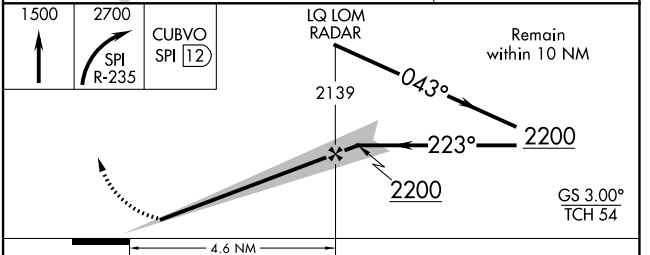
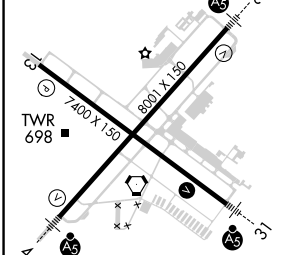
ABRAHAM LINCOLN CAPITAL (SPI)

ADF or RADAR required for procedure entry, DME required.				MALSR		MISSED APPROACH: Climb to 1500 then climbing right turn to 2700 on SPI VORTAC R-235 to CUBVO/SPI 12 DME and hold.	
ASR							

ATIS 127.65 270.1	SAINT LOUIS APP CON * 126.15 323.0	SPRINGFIELD TOWER * 121.3 (CTAF) 0 257.8	GND CON 121.9 348.6	CLNC DEL 121.7	UNICOM 122.95
-----------------------------	--	--	-------------------------------	--------------------------	-------------------------



ELEV 598	D	TDZE 598
----------	---	----------



CATEGORY	A	B	C	D
S-ILS 22	798-1/2 200 (200-1/2)			
S-LOC 22	980-1/2 382 (400-1/2)	980-5/8 382 (400-5/8)		
CIRCLING	1040-1 442 (500-1)	1100-1 502 (600-1)	1360-2 1/4 762 (800-2 1/4)	1380-2 1/2 782 (800-2 1/2)

EC-3, 22 FEB 2024 to 21 MAR 2024

EC-3, 22 FEB 2024 to 21 MAR 2024

LOC I-CJF 110.15	APP CRS 308°	Rwy Idg TDZE Apt Elev	7000 590 598
----------------------------	------------------------	-----------------------------	---

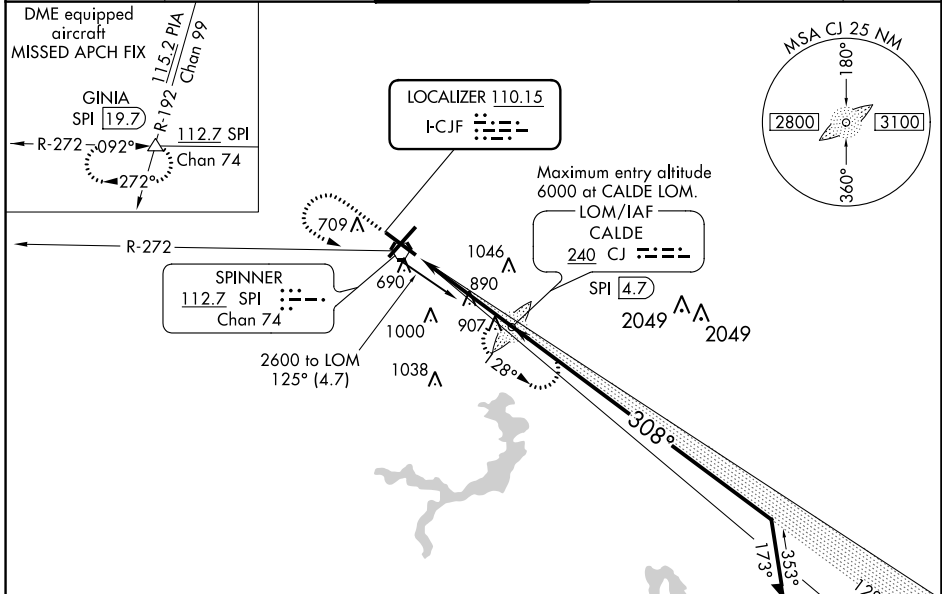
ILS or LOC RWY 31

ABRAHAM LINCOLN CAPITAL (SPI)

ADF or DME required. When local altimeter setting not received, use Logan County altimeter setting: increase DA to 848 feet and all MDA 60 feet, increase Circling Cat C/D/E visibility ¼ SM. For inop MALSRR, increase S-ILS-31 Cat E visibility to ¾ and S-LOC-31 Cat E visibility to 2¼. Autopilot coupled approach NA below 850.

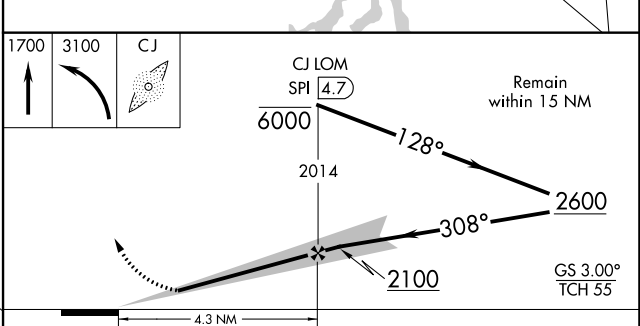
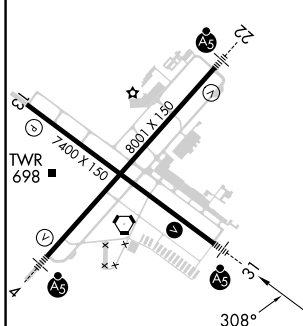
MALSRR MISSED APPROACH: Climb to 1700 then climbing left turn to 3100 direct CALDE LOM and hold. (DME equipped aircraft climb to 1700, then climbing left turn to 3200 via SPI R-272 to GINIA INT/SPI 19.7 DME and hold.)

ATIS 127.65 270.1	SAINT LOUIS APP CON * 126.15 323.0	SPRINGFIELD TOWER * 121.3 (CTAF) 257.8	GND CON 121.9 348.6	CLNC DEL 121.7	UNICOM 122.95
-----------------------------	--	--	-------------------------------	--------------------------	-------------------------



ELEV 598	D	TDZE 590
----------	----------	----------

ADF or DME REQUIRED



CATEGORY	A	B	C	D	E
S-ILS 31	790-½ 200 (200-½)				
S-LOC 31	1200-½ 610 (700-½)	1200-1¼ 610 (700-1¼)	1200-1½ 610 (700-1½)	1200-1¾ 610 (700-1¾)	1200-1¾ 610 (700-1¾)
CIRCLING	1200-1 602 (700-1)	1360-2¼ 762 (800-2¼)	1380-2½ 782 (800-2½)	1380-2¾ 782 (800-2¾)	1380-2¾ 782 (800-2¾)

EC-3, 22 FEB 2024 to 21 MAR 2024

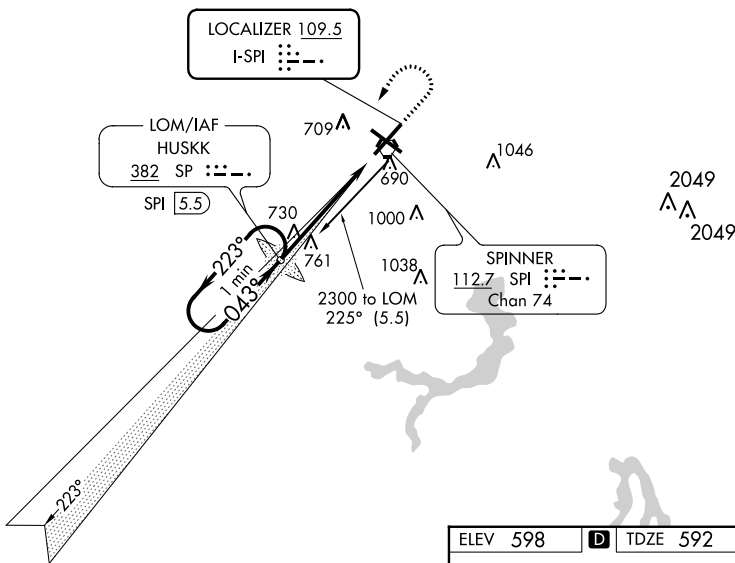
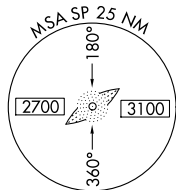
EC-3, 22 FEB 2024 to 21 MAR 2024

LOC I-SPI 109.5	APP CRS 043°	Rwy Idg TDZE Apt Elev	7927 592 598
---------------------------	------------------------	-----------------------------	---

ILS or LOC RWY 4

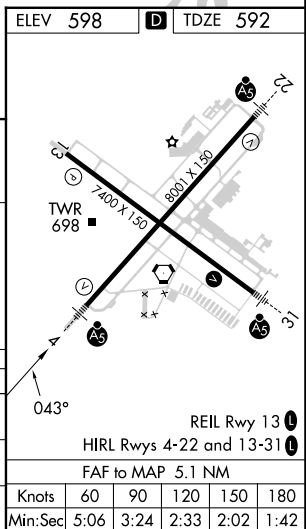
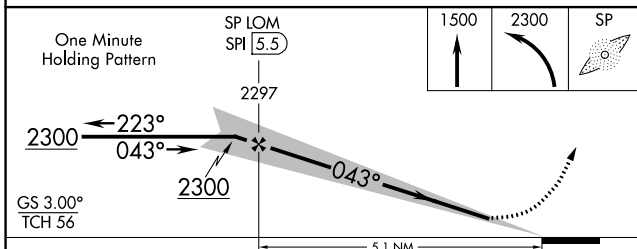
ABRAHAM LINCOLN CAPITAL (SPI)

ADF Required.		SPRINGFIELD TOWER ★		GND CON	CLNC DEL	UNICOM		
<p>⚠ When local altimeter setting not received, use Lincoln altimeter setting and increase all DA 57 feet, all MDA 60 feet, increase S-LOC and Circling Cat C/D visibility ¼ mile. For inop ALS when using Lincoln altimeter setting, increase S-LOC 4 Cats C and D visibility to 1⅓ SM. ASR *RVR 1800 authorized with use of FD or AP or HUD to DA (NA when using Lincoln altimeter setting).</p>		<p>★ ATIS 127.65 270.1</p>		<p>★ SAINT LOUIS APP CON 126.15 323.0</p>	<p>★ 121.3 (CTAF) 257.8</p>	<p>121.9 348.6</p>	<p>121.7</p>	<p>122.95</p>



EC-3, 22 FEB 2024 to 21 MAR 2024

EC-3, 22 FEB 2024 to 21 MAR 2024



CATEGORY	A	B	C	D
S-ILS 4	* 792/24 200 (200-½)			
S-LOC 4	1020/24 428 (500-½)	1020/40 428 (500-¾)		
CIRCLING	1040-1 442 (500-1)	1100-1 502 (600-1)	1360-2¼ 762 (800-2¼)	1380-2½ 782 (800-2½)

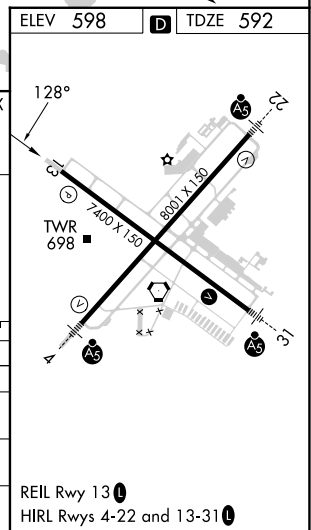
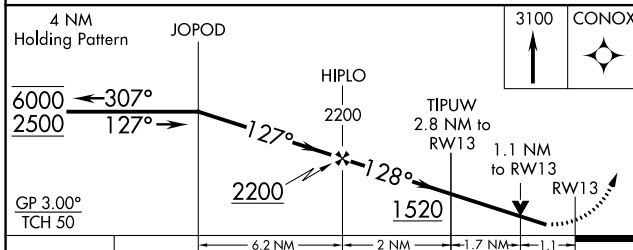
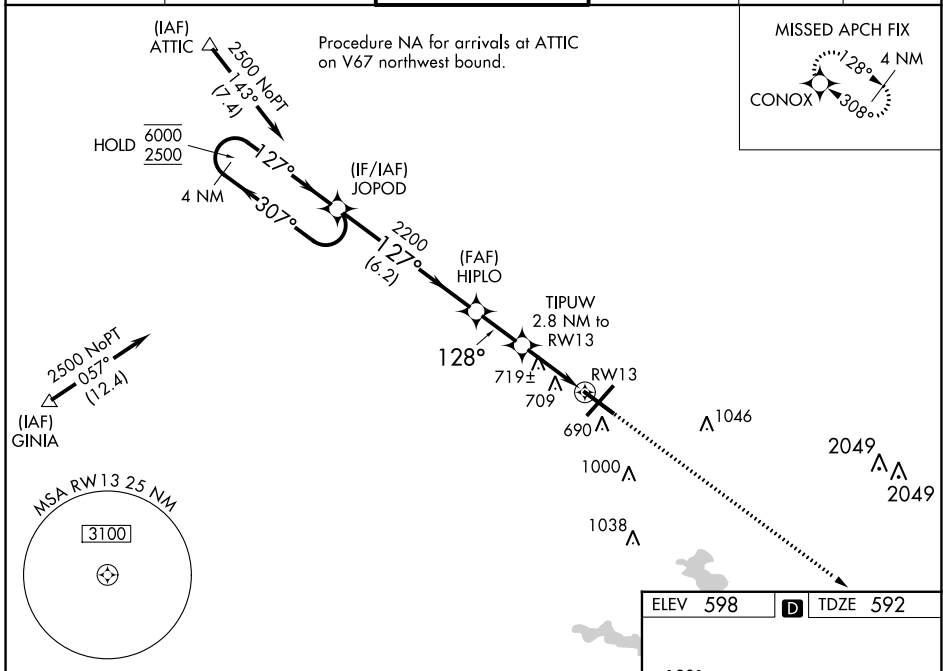
WAAS CH 99616 W13A	APP CRS 128°	Rwy Idg TDZE Apt Elev	7217 592 598
--	------------------------	-----------------------------	---

RNAV (GPS) RWY 13

ABRAHAM LINCOLN CAPITAL (SPI)

RNP APCH - GPS.		<p>Baro-VNAV and VDP NA when using Lincoln altimeter setting. For uncompensated Baro-VNAV systems, LNAV/VNAV NA below -16°C or above 54°C. When local altimeter setting not received, use Lincoln altimeter setting: increase LPV DA to 932 feet and all visibilities $\frac{1}{8}$ SM; increase LNAV/VNAV DA to 1068 feet and all visibilities $\frac{1}{4}$ SM; increase all MDAs 60 feet and LNAV visibility Cat C/D $\frac{1}{4}$ SM, and Circling visibility Cat C/D $\frac{1}{4}$ SM. Rwy 13 helicopter visibility reduction below $\frac{3}{4}$ SM NA.</p>		<p>MISSED APPROACH: Climb to 3100 direct CONOX and hold.</p>	
-----------------	--	--	--	--	--

ATIS 127.65 270.1	SAINT LOUIS APP CON * 126.15 323.0	SPRINGFIELD TOWER * 121.3 (CTAF) 0 257.8	GND CON 121.9 348.6	CLNC DEL 121.7	UNICOM 122.95
-----------------------------	--	--	-------------------------------	--------------------------	-------------------------



CATEGORY	A	B	C	D
LPV DA		875- $\frac{7}{8}$	283 (300- $\frac{7}{8}$)	
LNAV/VNAV DA		1011-1 $\frac{1}{8}$	419 (500-1 $\frac{1}{8}$)	
LNAV MDA	980-1	388 (400-1)	980-1 $\frac{1}{8}$	388 (400-1 $\frac{1}{8}$)
CIRCLING	1040-1 442 (500-1)	1100-1 502 (600-1)	1360-2 $\frac{1}{4}$ 762 (800-2 $\frac{1}{4}$)	1380-2 $\frac{1}{2}$ 782 (800-2 $\frac{1}{2}$)

EC-3, 22 FEB 2024 to 21 MAR 2024

EC-3, 22 FEB 2024 to 21 MAR 2024


WAAS CH 81809 W22A	APP CRS 223°	Rwy Idg TDZE Apt Elev	8001 598 598
--	------------------------	-----------------------------	---

RNAV (GPS) RWY 22

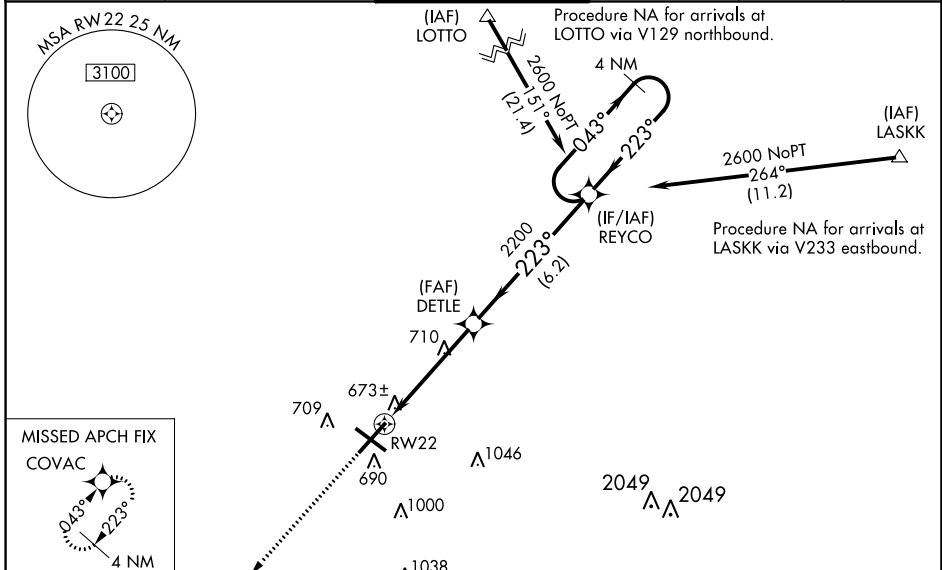
ABRAHAM LINCOLN CAPITAL (SPI)

RNP APCH - GPS.

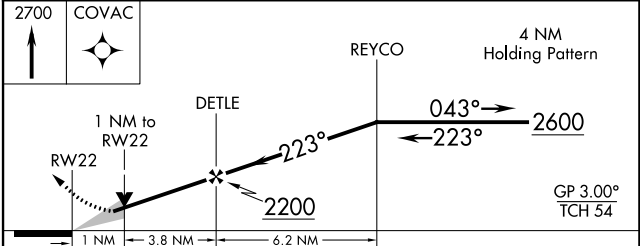
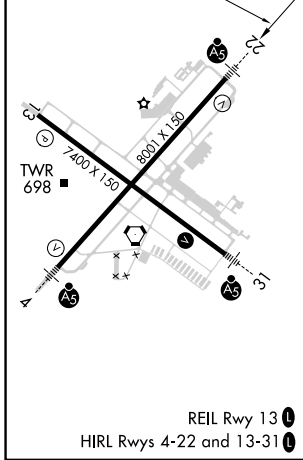
ASR For uncompensated Baro-VNAV systems, LNAV/VNAV NA below -16°C or above 54°C. When local altimeter not received, use Lincoln altimeter setting: increase LPV DA to 942 feet and all visibilities 1/8 SM, LNAV/VNAV DA to 1108 feet and all visibilities 1/8 SM; increase all MDAs 60 feet and visibility LNAV and Circling Cat C/D 1/4 SM. Baro-VNAV and VDP NA when using Lincoln altimeter setting. For inop ALS, increase LPV all Cats visibility to 3/8 SM. For inop ALS when using Lincoln altimeter setting, increase LPV all Cats visibility to 1 SM, increase LNAV/VNAV all Cats visibility to 1 3/8 SM.

MALSR  MISSED APPROACH: Climb to 2700 direct COVAC and hold.

ATIS 127.65 270.1	SAINT LOUIS APP CON ★ 126.15 323.0	SPRINGFIELD TOWER ★ 121.3 (CTAF) 0 257.8	GND CON 121.9 348.6	CLNC DEL 121.7	UNICOM 122.95
-----------------------------	--	--	-------------------------------	--------------------------	-------------------------



ELEV 598	D	TDZE 598
----------	----------	----------



CATEGORY	A	B	C	D
LPV DA	884-1/2		286 (300-1/2)	
LNAV/VNAV DA	1050-7/8		452 (500-7/8)	
LNAV MDA	980-1/2 382 (400-1/2)		980-5/8 382 (400-5/8)	
C CIRCLING	1040-1 1/4 442 (500-1 1/4)	1100-1 1/4 502 (600-1 1/4)	1360-2 1/4 762 (800-2 1/4)	1380-2 1/2 782 (800-2 1/2)

EC-3, 22 FEB 2024 to 21 MAR 2024


EC-3, 22 FEB 2024 to 21 MAR 2024

WAAS CH 90124 W31A	APP CRS 308°	Rwy Idg TDZE 7000 590 Apt Elev 597
--	------------------------	--

RNAV (GPS) RWY 31

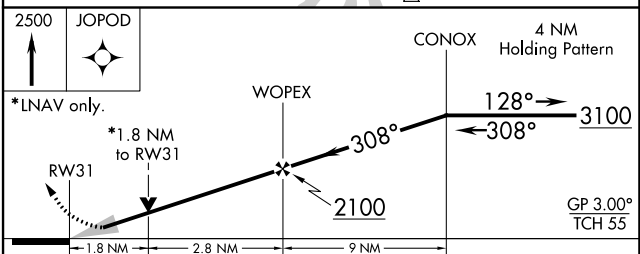
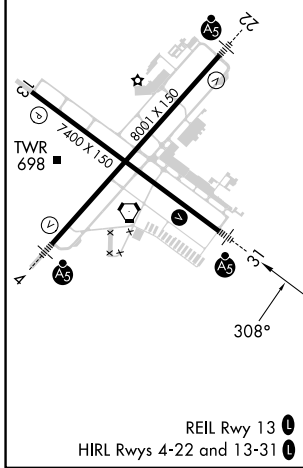
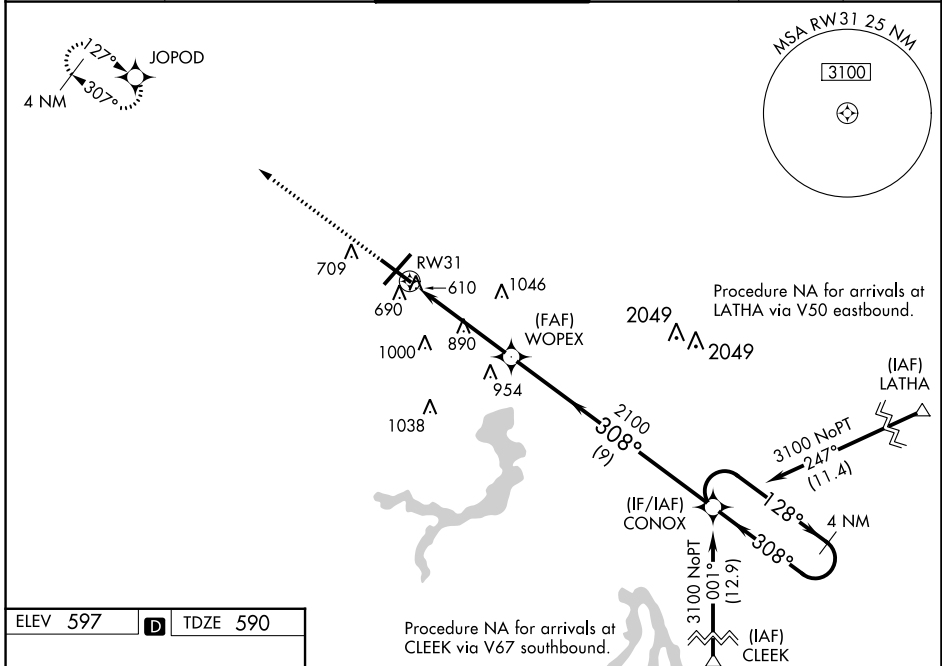
ABRAHAM LINCOLN CAPITAL (SPI)

⚠ DME/DME RNP-0.3 NA. Baro-VNAV NA below -16°C (4°F). When local altimeter setting not received, use Lincoln altimeter setting: increase all DA 57 feet and MDA 60 feet, increase Circling Cat C and D visibility ¼ SM. VDP and ASR Baro-VNAV NA when using Logan County altimeter setting. For inoperative MALSR, increase LPV visibility to ¾ all Cats, increase LNAV/VNAV Cat D visibility to 1.

MALSR 

MISSED APPROACH:
Climb to 2500 direct JOPOD and hold.

ATIS 127.65 270.1	SAINT LOUIS APP CON * 126.15 323.0	SPRINGFIELD TOWER * 121.3 (CTAF) 257.8	GND CON 121.9 348.6	CLNC DEL 121.7	UNICOM 122.95
-----------------------------	--	--	-------------------------------	--------------------------	-------------------------



CATEGORY	A	B	C	D
LPV DA	840-½ 250 (300-½)			
LNAV/VNAV DA	865-½ 275 (300-½)			865-¾ 275 (300-¾)
LNAV MDA	1200-½ 610 (700-½)	1200-1¼ 610 (700-1¼)		1200-1½ 610 (700-1½)
C CIRCLING	1200-1 603 (700-1)	1360-2¼ 762 (800-2¼)		1380-2½ 782 (800-2½)

EC-3, 22 FEB 2024 to 21 MAR 2024

EC-3, 22 FEB 2024 to 21 MAR 2024

WAAS CH 70309 W04A	APP CRS 043°	Rwy Idg TDZE Apt Elev	7927 592 598
--	------------------------	-----------------------------	---

RNAV (GPS) RWY 4

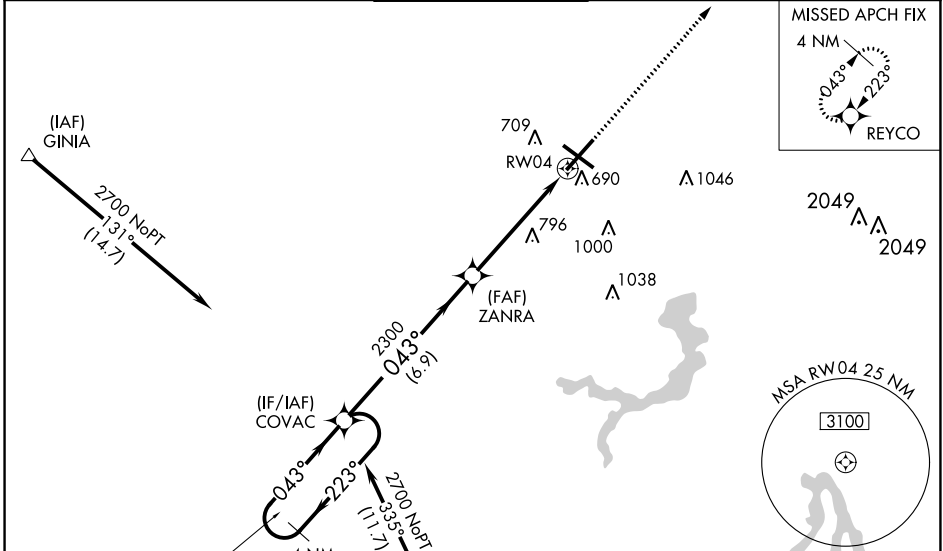
ABRAHAM LINCOLN CAPITAL (SPI)

RNP APCH - GPS.

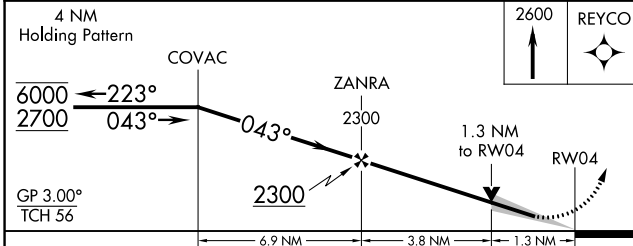
⚠ For uncompensated Baro-VNAV systems, LNAV/VNAV NA below -16°C or above 54°C. Baro-VNAV and VDP NA when using Lincoln altimeter setting. For inop ALS, increase LPV all Cats visibility to RVR 4500 and LNAV Cats C/D visibility to 1 3/8 SM. When local altimeter ASR setting not received, use Lincoln altimeter setting and increase LPV DA to 912 feet; increase LNAV/VNAV DA to 989 feet and all visibilities to RVR 3500; increase all MDAs 60 feet and LNAV visibility Cat C/D to RVR 5500 and Circling visibility Cat C/D 1/4 SM. For inop ALS when using Lincoln altimeter setting, increase LPV all Cats visibility to RVR 4500.

MALSR MISSED APPROACH: Climb to 2600 direct REYCO and hold.

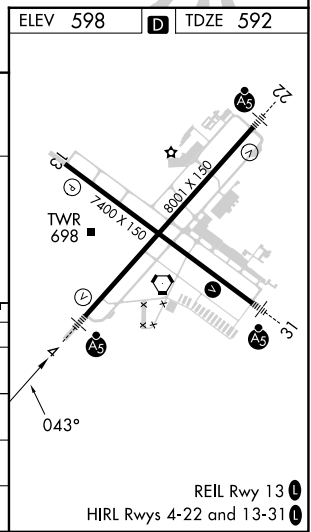
ATIS 127.65 270.1	SAINT LOUIS APP CON * 126.15 323.0	SPRINGFIELD TOWER * 121.3 (CTAF) 0 257.8	GND CON 121.9 348.6	CLNC DEL 121.7	UNICOM 122.95
-----------------------------	--	--	-------------------------------	--------------------------	-------------------------



ELEV 598	D TDZE 592
----------	-------------------



CATEGORY	A	B	C	D
LPV DA		854/24	262 (300-1/2)	
LNAV/VNAV DA		931/26	339 (400-1/2)	
LNAV MDA	1060/24	468 (500-1/2)	1060/50	468 (500-1)
C CIRCLING	1060-1 462 (500-1)	1100-1 502 (600-1)	1360-2 1/4 762 (800-2 1/4)	1380-2 1/2 782 (800-2 1/2)



EC-3, 22 FEB 2024 to 21 MAR 2024

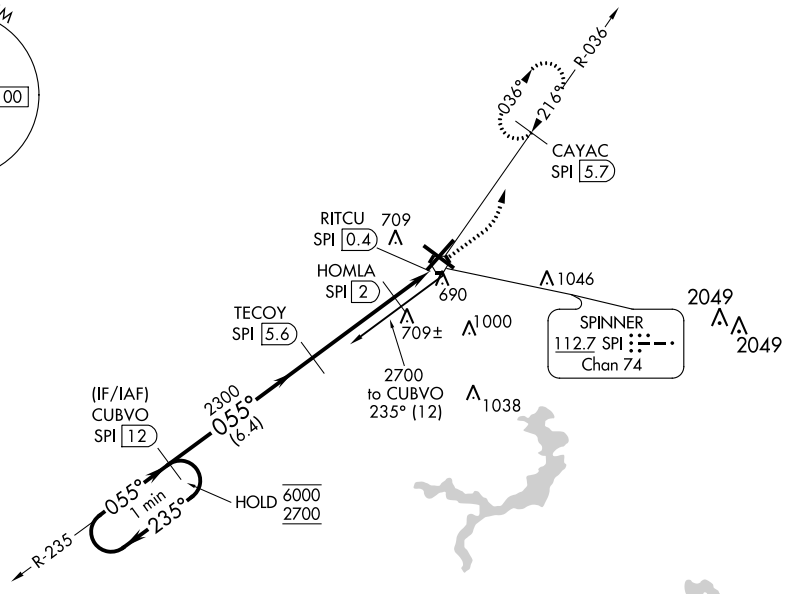
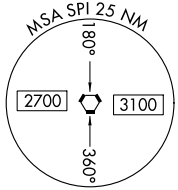
EC-3, 22 FEB 2024 to 21 MAR 2024

VORTAC SPI 112.7 Chan 74	APP CRS 055°	Rwy Idg TDZE Apt Elev	7927 592 598
--	------------------------	-----------------------------	---

VOR RWY 4

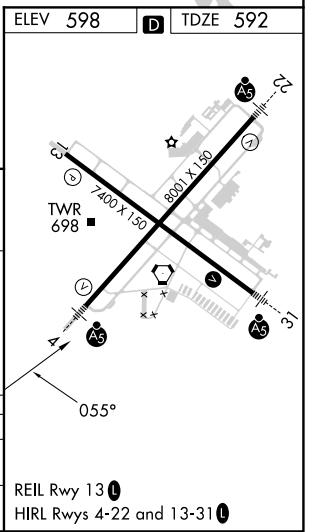
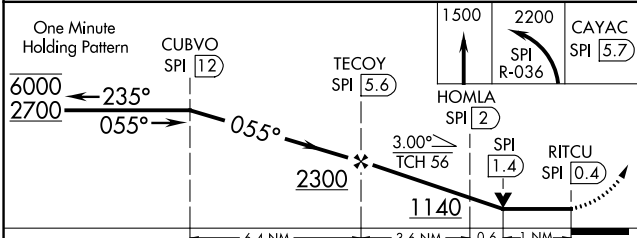
ABRAHAM LINCOLN CAPITAL (SPI)

DME required.		MALSR		MISSED APPROACH: Climb to 1500 then climbing left turn to 2200 on SPI VORTAC R-036 to CAYAC/5.7 DME and hold.	
ATIS 127.65 270.1	SAINT LOUIS APP CON * 126.15 323.0	SPRINGFIELD TOWER * 121.3 (CTAF) 0 257.8	GND CON 121.9 348.6	CLNC DEL 121.7	UNICOM 122.95



EC-3, 22 FEB 2024 to 21 MAR 2024

EC-3, 22 FEB 2024 to 21 MAR 2024



CATEGORY	A	B	C	D
S-4	960/24	368 (400-1/2)	960/40	368 (400-3/4)
CIRCLING	1040-1 442 (500-1)	1100-1 502 (600-1)	1360-2 1/4 762 (800-2/4)	1380-2 1/2 782 (800-2/2)

VORTAC SPI 112.7 Chan 74	APP CRS 134°	Rwy Idg 7217 TDZE 592 Apt Elev 598
--	------------------------	---

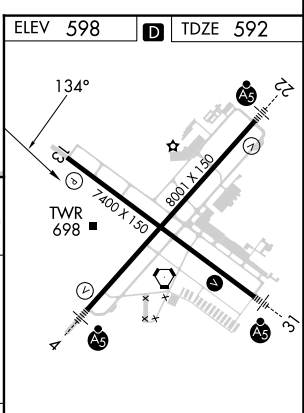
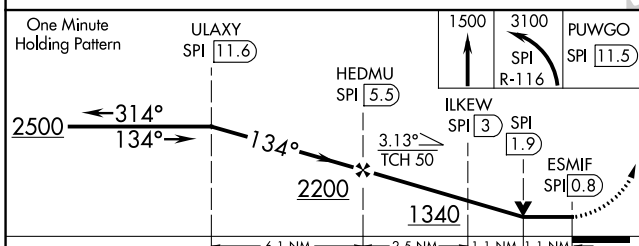
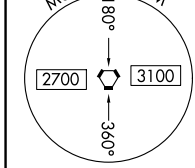
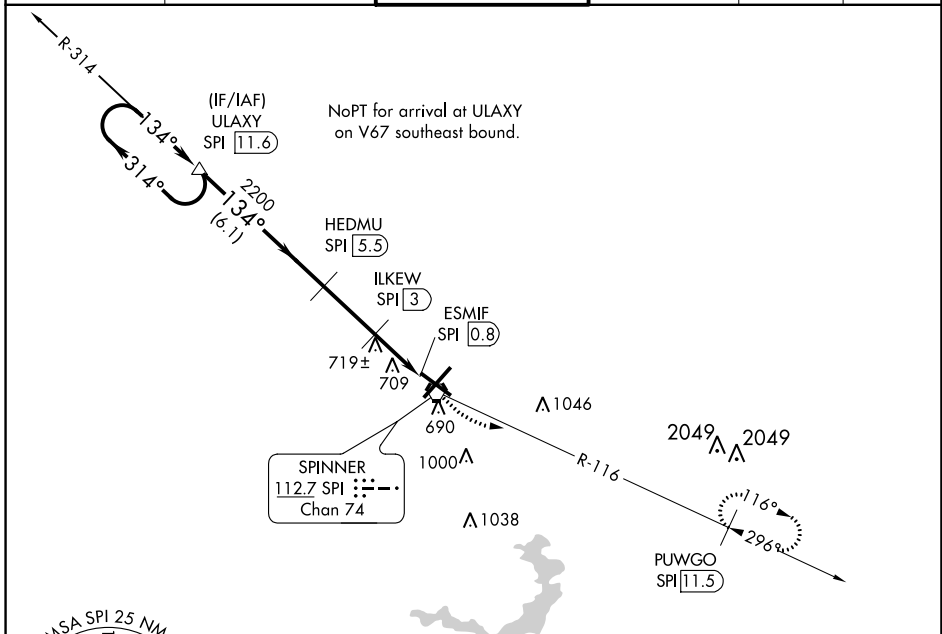
VOR/DME RWY 13

ABRAHAM LINCOLN CAPITAL (SPI)

⚠️ Helicopter visibility reduction below 3/4 SM NA. When local altimeter setting not received, use Lincoln altimeter setting: increase all MDA 60 feet and S-13 and Circling Cat C and D visibility 1/4 SM. VDP NA when using Lincoln altimeter setting.

MISSED APPROACH: Climb to 1500 then climbing left turn to 3100 via SPI VORTAC R-116 to PUWGO/SPI 11.5 DME and hold.

ATIS 127.65 270.1	SAINT LOUIS APP CON * 126.15 323.0	SPRINGFIELD TOWER * 121.3 (CTAF) 257.8	GND CON 121.9 348.6	CLNC DEL 121.7	UNICOM 122.95
-----------------------------	--	--	-------------------------------	--------------------------	-------------------------



CATEGORY	A	B	C	D
S-13	980-1	388 (400-1)	980-1 1/8	388 (400-1 1/8)
C CIRCLING	1040-1 442 (500-1)	1100-1 502 (600-1)	1360-2 1/4 762 (800-2 1/4)	1380-2 1/2 782 (800-2 1/2)

ELEV 598 **D** TDZE 592

REIL Rwy 13 **1**
HIRL Rwy 4-22 and 13-31 **1**

EC-3, 22 FEB 2024 to 21 MAR 2024

EC-3, 22 FEB 2024 to 21 MAR 2024

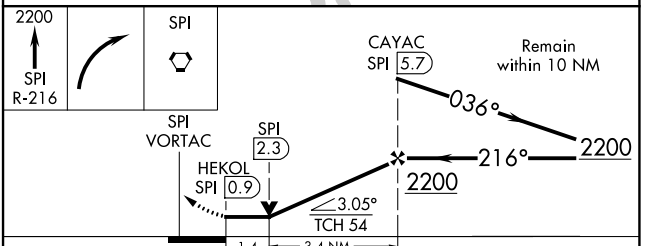
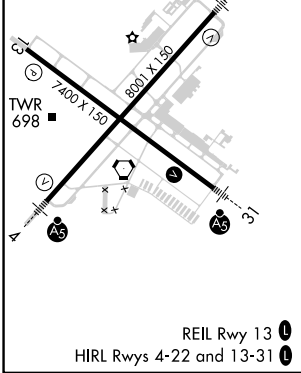
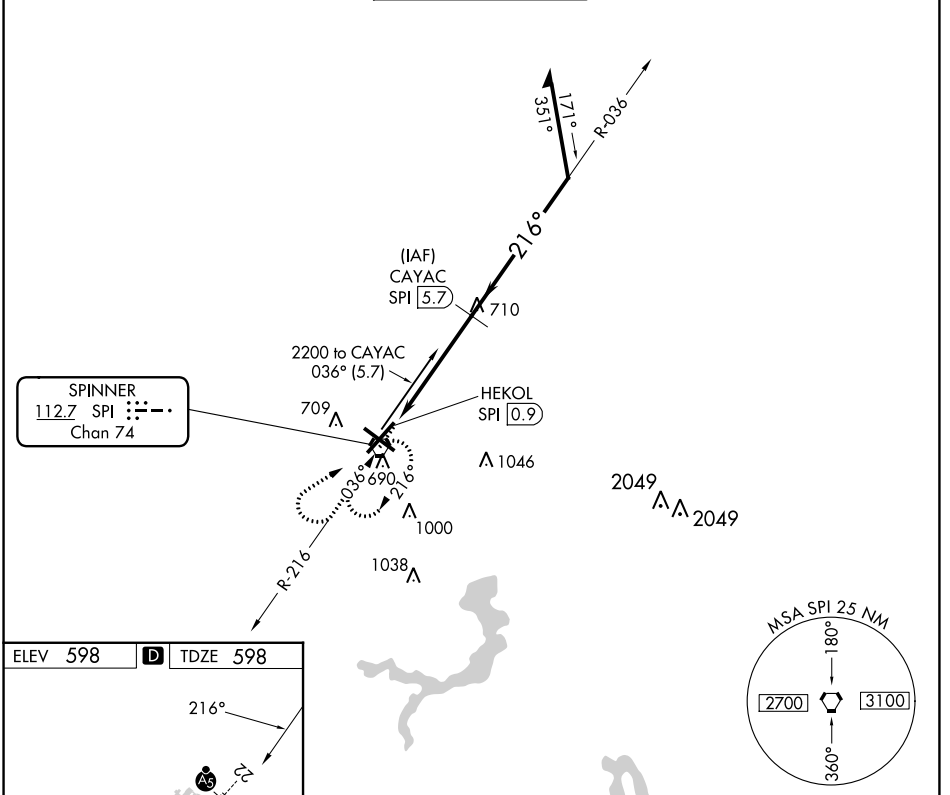
VORTAC SPI 112.7 Chan 74	APP CRS 216°	Rwy Idg TDZE Apt Elev	8001 598 598
--	------------------------	-----------------------------	---

VOR/DME RWY 22

ABRAHAM LINCOLN CAPITAL (SPI)

⚠ ASR	When local altimeter setting not received, use Lincoln altimeter setting: increase all MDA 60 feet and S-13 and Circling Cat C and D visibility ¼ SM. VDP NA when using Lincoln altimeter setting.	MALSR AS	MISSED APPROACH: Climb to 2200 via SPI R-216 then right turn direct SPI VORTAC and hold.
------------------------	--	--------------------	--

ATIS 127.65 270.1	SAINT LOUIS APP CON * 126.15 323.0	SPRINGFIELD TOWER * 121.3 (CTAF) 257.8	GND CON 121.9 348.6	CLNC DEL 121.7	UNICOM 122.95
-----------------------------	--	--	-------------------------------	--------------------------	-------------------------



CATEGORY	A	B	C	D
S-22	1100-½ 502 (600-½)		1100-1 502 (600-1)	
C CIRCLING	1100-1 502 (600-1)		1360-2¼ 762 (800-2¼)	1380-2½ 782 (800-2½)

EC-3, 22 FEB 2024 to 21 MAR 2024

EC-3, 22 FEB 2024 to 21 MAR 2024

VORTAC SPI 112.7 Chan 74	APP CRS 296°	Rwy Idg TDZE Apt Elev	7000 590 598
---------------------------------------	------------------------	-----------------------------	---

VOR/DME RWY 31

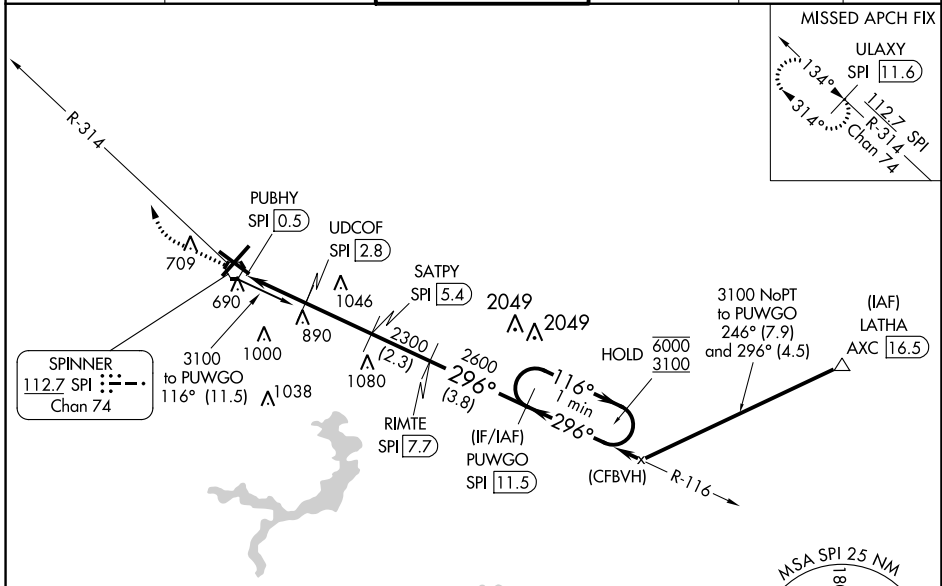
ABRAHAM LINCOLN CAPITAL (SPI)

VDP NA when using Lincoln altimeter setting.



MISSED APPROACH: Climb to 1500 then climbing right turn to 2500 on SPI VORTAC R-314 to ULAXY/SPI 11.6 DME and hold.

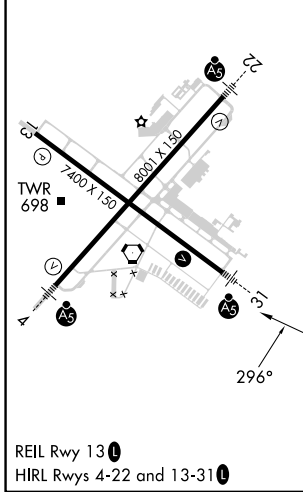
ATIS 127.65 270.1	SAINT LOUIS APP CON * 126.15 323.0	SPRINGFIELD TOWER * 121.3 (CTAF) 257.8	GND CON 121.9 348.6	CLNC DEL 121.7	UNICOM 122.95
-----------------------------	--	--	-------------------------------	--------------------------	-------------------------



EC-3, 22 FEB 2024 to 21 MAR 2024

EC-3, 22 FEB 2024 to 21 MAR 2024

ELEV 598	D	TDZE 590
----------	----------	----------



1500	2500	ULAXY SPI 11.6	RIMTE SPI 7.7	PWUGO SPI 11.5	One Minute Holding Pattern
		UDCOF SPI 2.8	SATPY SPI 5.4		
		PUBHY SPI 0.5			
1.8		0.6	2.6 NM	2.3 NM	3.8 NM
CATEGORY	A		B		C
S-31	1200-3/4 610 (700-3/4)		1200-1 3/8 610 (700-1 3/8)		1360-2 1/4 1380-2 1/2
C CIRCLING	1200-1 602 (700-1)		762 (800-2 1/4)		782 (800-2 1/2)