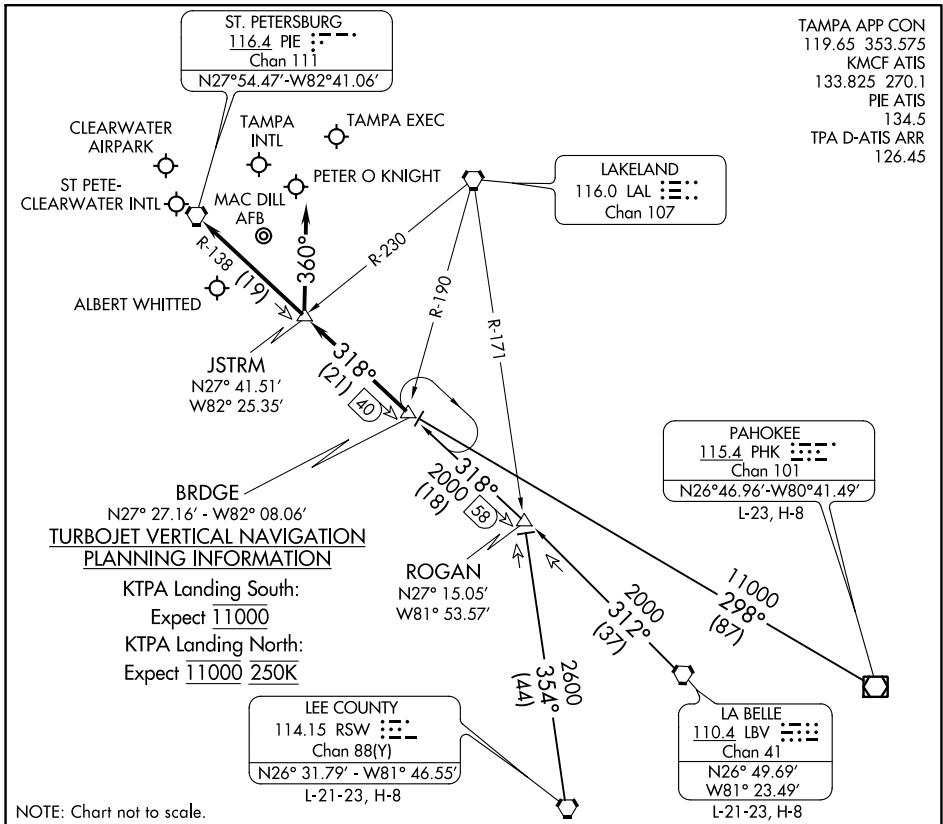


# BRDGE EIGHT ARRIVAL

TAMPA, FLORIDA



TAMPA APP CON  
 119.65 353.575  
 KMCF ATIS  
 133.825 270.1  
 PIE ATIS  
 134.5  
 TPA D-ATIS ARR  
 126.45

**TURBOJET VERTICAL NAVIGATION  
 PLANNING INFORMATION**

KTPA Landing South:  
 Expect 11000  
 KTPA Landing North:  
 Expect 11000 250K

## ARRIVAL ROUTE DESCRIPTION

- LA BELLE TRANSITION (LBV.BRDGE8):** From over LBV VORTAC on LBV R-312 & PIE R-138 to BRDGE INT. Thence. . .
- LEE COUNTY TRANSITION (RSW.BRDGE8):** From over RSW VORTAC on RSW R-354 to ROGAN INT, then on PIE R-138 to BRDGE INT. Thence. . .
- PAHOKEE TRANSITION (PHK.BRDGE8):** From over PHK VOR/DME on PHK R-298 to BRDGE INT. Thence. . .

**KTPA:**  
 . . . RWY 19L/R: From over BRDGE INT on PIE R-138 to JSTRM INT. Depart JSTRM INT heading 360° for vector to final approach course.  
 . . . RWY 01L/R: From over BRDGE INT on PIE R-138 to PIE VORTAC. Expect RADAR vector to final approach course after BRDGE INT.

**KPIE, KCLW, KTPF, KSPG, KMCF, KVDF:**  
 . . . From over BRDGE INT on PIE R-138 to PIE VORTAC. Expect RADAR vector to final approach course/airport after BRDGE INT.

**LOST COMMUNICATIONS:** STANDARD.

# BRDGE EIGHT ARRIVAL

TAMPA, FLORIDA

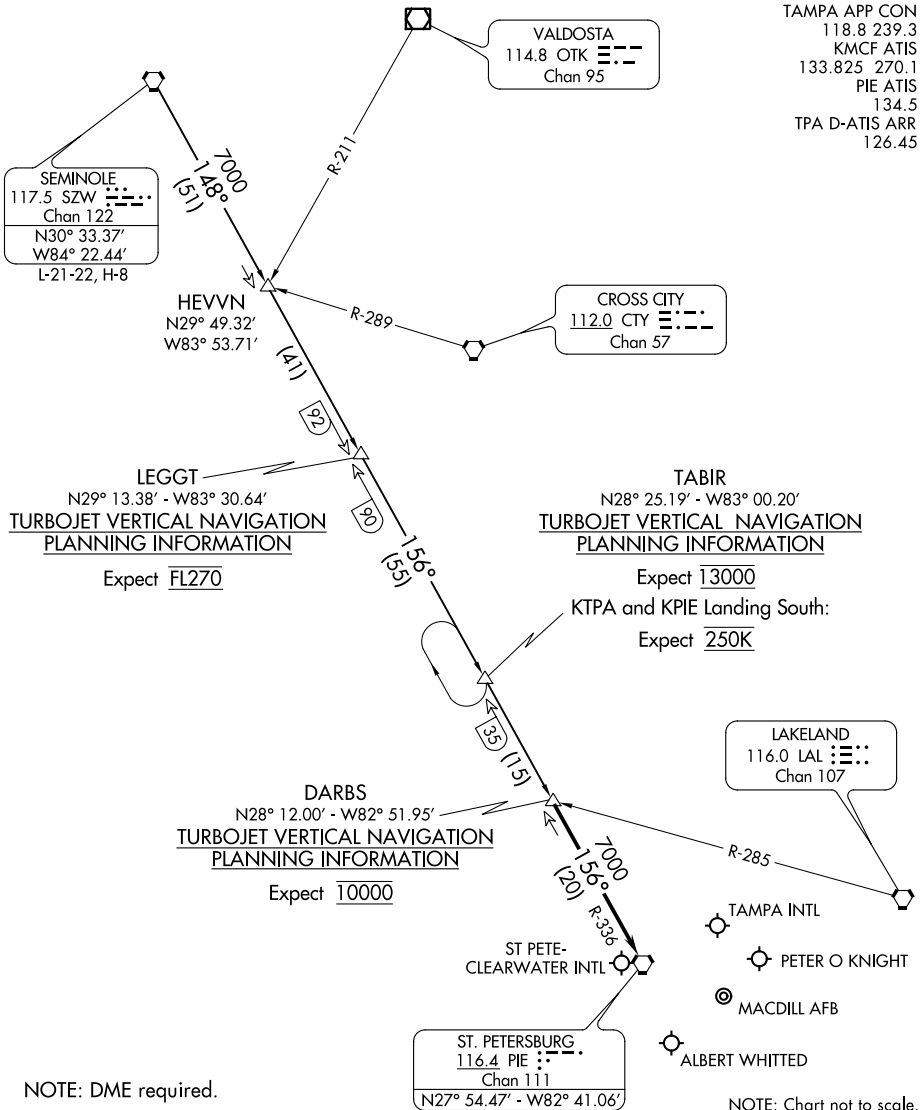
SE-3, 27 JAN 2022 to 24 FEB 2022

SE-3, 27 JAN 2022 to 24 FEB 2022

# DARBS THREE ARRIVAL

TAMPA, FLORIDA

TAMPA APP CON  
 118.8 239.3  
 KMCF ATIS  
 133.825 270.1  
 PIE ATIS  
 134.5  
 TPA D-ATIS ARR  
 126.45



SE-3, 27 JAN 2022 to 24 FEB 2022

SE-3, 27 JAN 2022 to 24 FEB 2022

NOTE: DME required.

NOTE: Chart not to scale.

### ARRIVAL ROUTE DESCRIPTION

**SEMINOLE TRANSITION (SZW.DARBS3):** From over SZW VORTAC on SZW R-148 and PIE R-336 to DARBS INT. Thence. . . .

. . . .from over DARBS INT on PIE R-336 to PIE VORTAC. Expect RADAR vectors to final approach course.

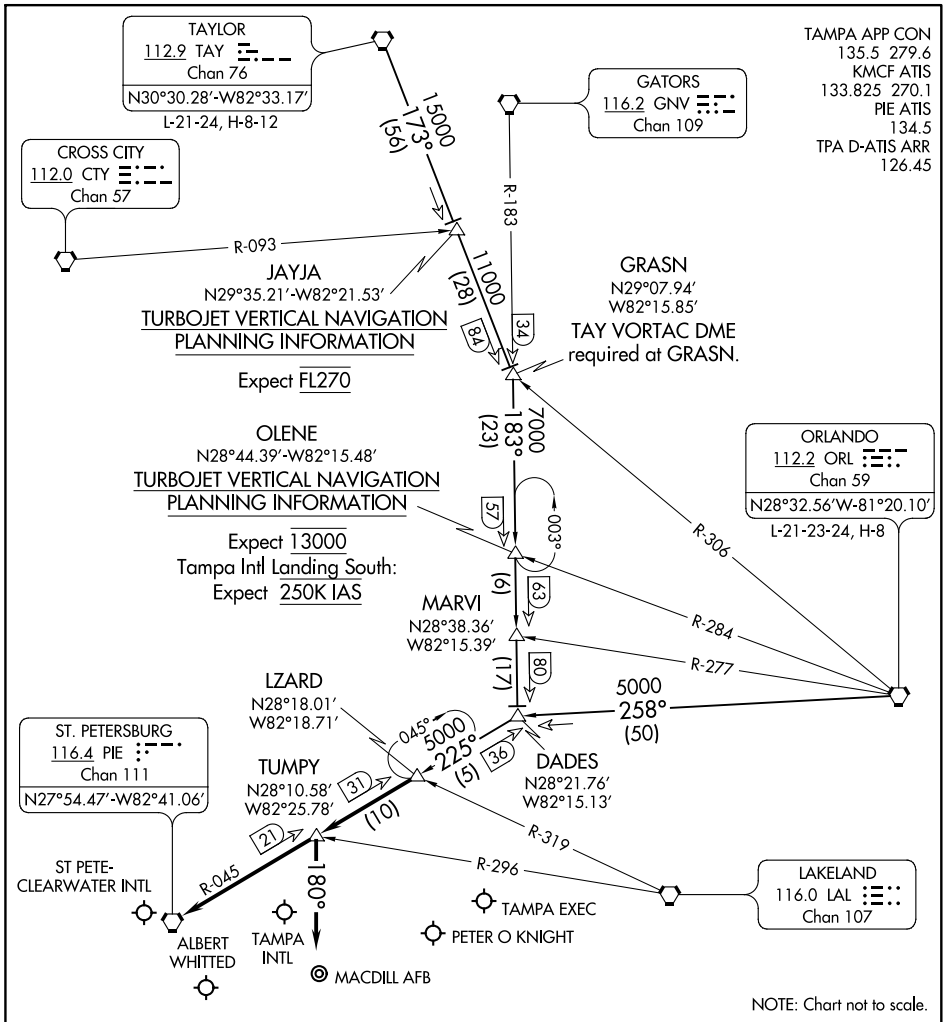
**LOST COMMUNICATIONS: STANDARD.**

# DARBS THREE ARRIVAL

TAMPA, FLORIDA

# LZARD SIX ARRIVAL

TAMPA, FLORIDA



SE-3, 27 JAN 2022 to 24 FEB 2022

SE-3, 27 JAN 2022 to 24 FEB 2022

TAMPA APP CON  
 135.5 279.6  
 KMC F ATIS  
 133.825 270.1  
 PIE ATIS  
 134.5  
 TPA D-ATIS ARR  
 126.45

ORLANDO  
 112.2 ORL  
 Chan 59  
 N28°32.56' W-81°20.10'  
 L-21-23-24, H-8

ST. PETERSBURG  
 116.4 PIE  
 Chan 111  
 N27°54.47' W82°41.06'

NOTE: Chart not to scale.

**TAYLOR TRANSITION (TAY.LZARD6):** From over TAY VORTAC on TAY R-173 to GRASN INT, then on GNV R-183 to DADES INT, then on PIE R-045 to LZARD INT. Thence. . . .

**ORLANDO TRANSITION (ORL.LZARD6):** From over ORL VORTAC on ORL R-258 to DADES INT, then on PIE R-045 to LZARD INT. Thence. . . .

**TAMPA INTL:**

. . . .**RUNWAYS 1L/R:** From over LZARD INT on PIE R-045 to TUMPY INT. Depart TUMPY INT heading 180° for RADAR vectors to final approach course.

. . . .**RUNWAYS 19L/R:** From over LZARD INT on PIE R-045 to PIE VORTAC. Expect RADAR vectors to final approach after LZARD INT.

**ALL OTHER AIRPORTS:** From over LZARD INT on PIE R-045 to PIE VORTAC. Expect RADAR vectors to the airport after LZARD INT.

# LZARD SIX ARRIVAL

TAMPA, FLORIDA