

WAAS CH 90208 W18A	APP CRS 181°	Rwy ldg 4997 TDZE 1191 Apt Elev 1191
--	------------------------	---

RNAV (GPS) RWY 18

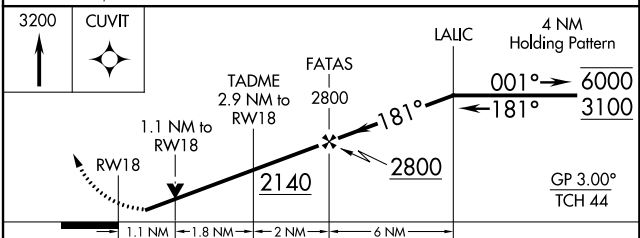
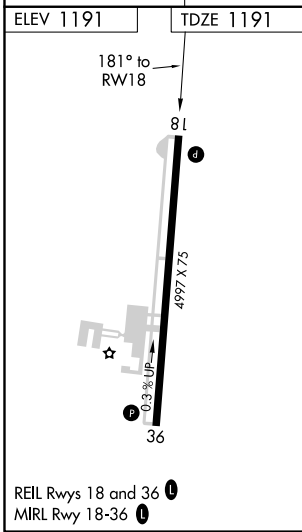
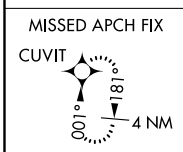
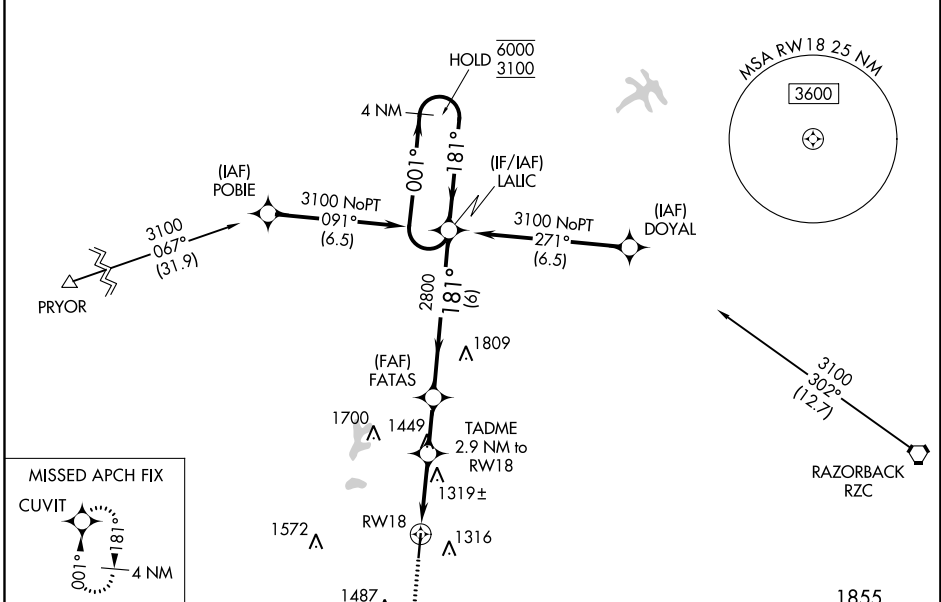
SMITH FLD (SLG)

RNP APCH-GPS.

⚠ Rwy 18 helicopter visibility reduction below 3/4 SM NA.
For uncompensated Baro-VNAV systems, LNAV/VNAV NA below -17°C or above 54°C.

MISSED APPROACH:
Climb to 3200 direct
CUVIT and hold.

AWOS-3PT 118.375	RAZORBACK APP CON ★ 121.0 244.575	UNICOM 122.8 (CTAF) ①
----------------------------	---	---------------------------------



CATEGORY	A	B	C	D
LPV DA		1513-1	322 (400-1)	
LNAV/VNAV DA		1598-1½	407 (500-1½)	
LNAV MDA	1580-1	389 (400-1)	1580-1½	389 (400-1½)
C CIRCLING	1620-1 429 (500-1)	1720-1 529 (600-1)	1800-1¾ 609 (700-1¾)	1880-2¼ 689 (700-2¼)

SC-1, 06 OCT 2022 to 03 NOV 2022

SC-1, 06 OCT 2022 to 03 NOV 2022

WAAS CH 63105 W36A	APP CRS 001°	Rwy Idg 4997 TDZE 1181 Apt Elev 1191
--	------------------------	---

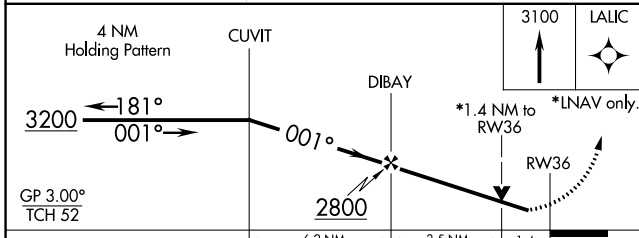
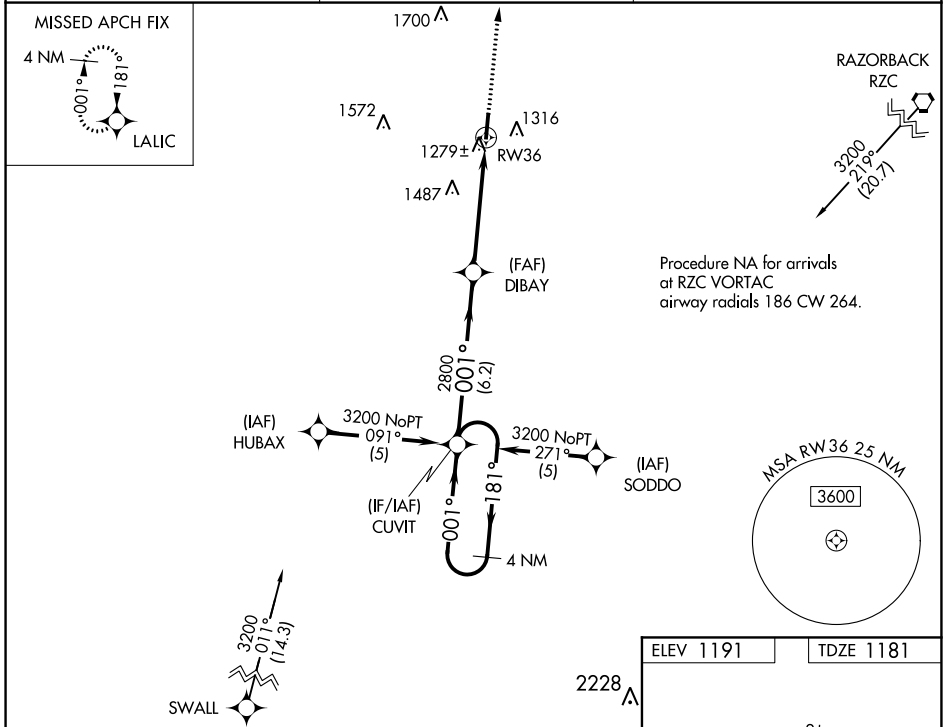
RNAV (GPS) RWY 36

SMITH FLD (SLG)

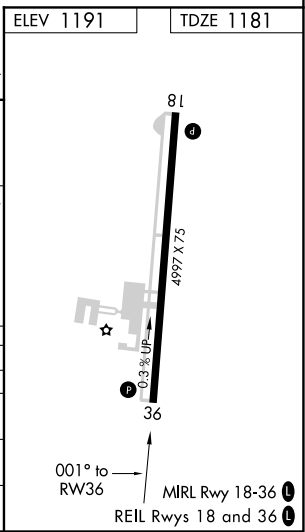
⚠ When local altimeter setting not received, use Northwest Arkansas MSL altimeter setting and increase LPV DA to 1469 feet, increase LNAV/VNAV DA to 1587 feet; increase all MDAs 40 feet. For uncompensated Baro-VNAV systems, LNAV/VNAV NA below -17°C (2°F) or above 46°C (114°F). DME/DME RNP-0.3 NA. Visibility reduction by helicopters NA. Baro-VNAV and VDP NA when using Northwest Arkansas MSL altimeter setting.

MISSED APPROACH: Climb to 3100 direct LALIC and hold.

AWOS-3PT 118.375	RAZORBACK APP CON* 121.0 244.575	UNICOM 122.8 (CTAF)
----------------------------	--	-------------------------------



CATEGORY	A	B	C	D
LPV DA	1431-1 250 (300-1)			
LNAV/VNAV DA	1549-1¼ 368 (400-1¼)			
LNAV MDA	1660-1	479 (500-1)	1660-1¼ 479 (500-1¼)	1660-1½ 479 (500-1½)
CIRCLING	1660-1 469 (500-1)	1720-1 529 (600-1)	1800-1¾ 609 (700-1¾)	1880-2¼ 689 (700-2¼)



SC-1, 06 OCT 2022 to 03 NOV 2022

SC-1, 06 OCT 2022 to 03 NOV 2022