

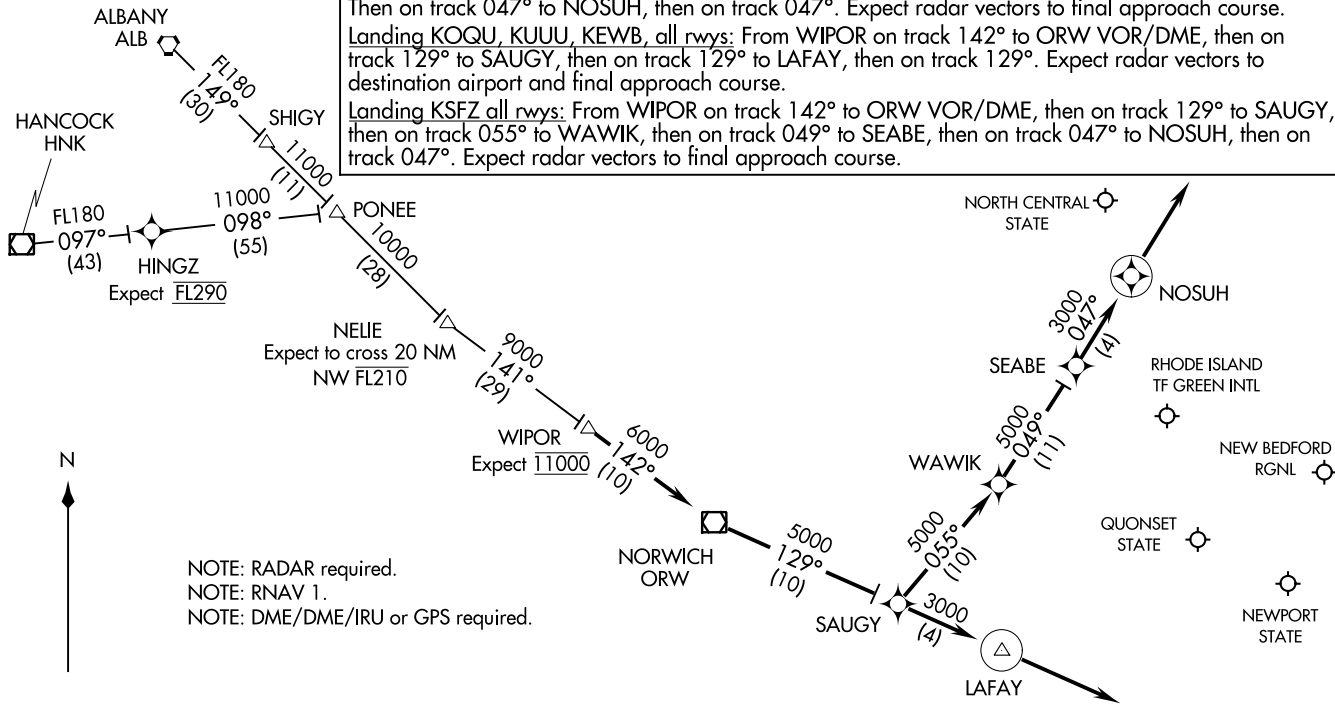
WIPOR THREE ARRIVAL (RNAV)
 (WIPOR.WIPOR3) 13NOV14

PROVIDENCE APP CON★
 123.675 244.875
 EWB ATIS
 126.85
 PVD D-ATIS
 124.2

ALBANY TRANSITION (ALB.WIPOR3):
HANCOCK TRANSITION (HNK.WIPOR3):
HINGZ TRANSITION (HINGZ.WIPOR3):

ARRIVAL ROUTE DESCRIPTION

From WIPOR on track 142° to ORW VOR/DME, then on track 129° to SAUGY.
Landing KPYD Rwy 5, 34: From SAUGY on track 129° to LAFAY, then on track 129°.
 Expect radar vectors to final approach course.
Landing KPYD Rwy 16, 23: From SAUGY on track 055° to WAWIK, then on track 049° to SEABE.
 Then on track 047° to NOSUH, then on track 047°. Expect radar vectors to final approach course.
Landing KOQU, KUUU, KEWB, all rwy's: From WIPOR on track 142° to ORW VOR/DME, then on track 129° to SAUGY, then on track 129° to LAFAY, then on track 129°. Expect radar vectors to destination airport and final approach course.
Landing KSFZ all rwy's: From WIPOR on track 142° to ORW VOR/DME, then on track 129° to SAUGY, then on track 055° to WAWIK, then on track 049° to SEABE, then on track 047° to NOSUH, then on track 047°. Expect radar vectors to final approach course.



NOTE: RADAR required.
 NOTE: RNAV 1.
 NOTE: DME/DME/IRU or GPS required.

NOTE: Chart not to scale.

PROVIDENCE, RHODE ISLAND

WIPOR THREE ARRIVAL (RNAV)
 (WIPOR.WIPOR3) 21280

AL-333 (FAA)

PROVIDENCE, RHODE ISLAND