

WAAS CH <b>40311</b> W01A	APP CRS <b>005°</b>	Rwy Idg <b>5234</b> TDZE <b>62</b> Apt Elev <b>62</b>
---------------------------------	------------------------	---

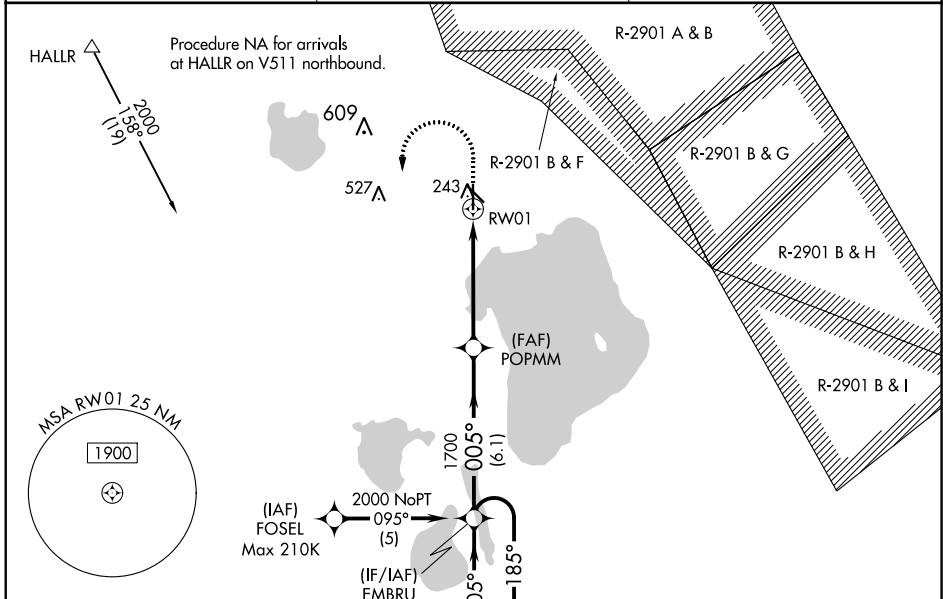
# RNAV (GPS) RWY 1

SEBRING RGNL (SEIF)

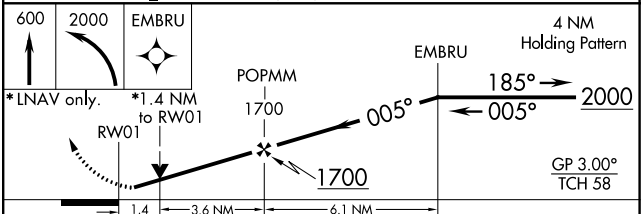
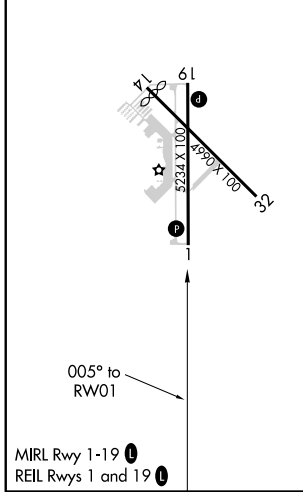
**NA** For uncompensated Baro-VNAV systems, LNAV/VNAV NA below -15°C (5°F) or above 54°C (130°F). DME/DME RNP-0.3 NA. When local altimeter setting not received, use Vero Beach Rgnl altimeter setting and increase all DA 122 feet and all MDA 140 feet; increase LPV all Cats visibility ½ mile, LNAV/VNAV all Cats visibility and LNAV Cats C and D visibility ¾ mile, increase Circling Cat C visibility ½ mile and Cat D visibility ¼ mile. Night landing: Rwy 14, 32 NA. VDP and Baro-VNAV NA when using Vero Beach altimeter. Helicopter visibility reduction below ¾ SM NA.

**MISSED APPROACH:** Climb to 600 then climbing left turn to 2000 direct EMBRU and hold.

AWOS-3 <b>119.475</b>	MIAMI CENTER <b>134.55 257.7</b>	UNICOM <b>122.7 (CTAF) 0</b>
--------------------------	-------------------------------------	---------------------------------



ELEV 62	TDZE 62
---------	---------



CATEGORY	A	B	C	D
LPV DA	381-1 319 (400-1)			
LNAV/VNAV DA	408-1½ 346 (400-1½)			
LNAV MDA	540-1 478 (500-1)	540-1¾ 478 (500-1¾)		
CIRCLING	600-1 538 (600-1)	600-1½ 538 (600-1½)	620-2 558 (600-2)	

SE-3, 07 OCT 2021 to 04 NOV 2021

SE-3, 07 OCT 2021 to 04 NOV 2021

WAAS CH <b>66024</b> <b>W14A</b>	APP CRS <b>140°</b>	Rwy Idg <b>4701</b> TDZE <b>60</b> Apt Elev <b>62</b>
--	------------------------	---

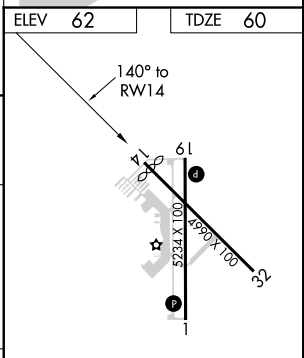
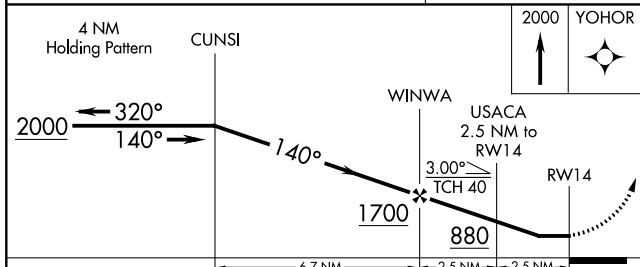
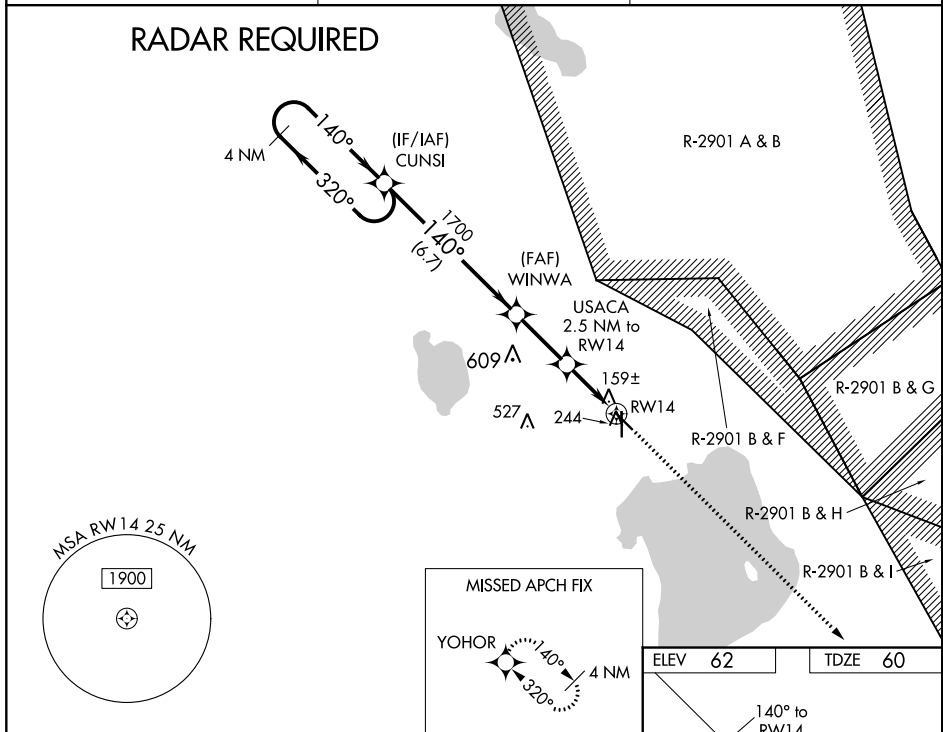
# RNAV (GPS) RWY 14

SEBRING RGNL (SEF)

**⚠** DME/DME RNP-0.3 NA. Helicopter visibility reduction below 1 SM NA. When local altimeter setting not received, use Vero Beach Rgnl altimeter setting and increase all MDA 140 feet; increase LP Cat C and D visibility 3/8 mile, LNAV Cat C and D and Circling Cat C visibility 1/2 mile and Cat D Circling 1/4 mile. Night landing: Rwy 14, 32 NA.

**MISSED APPROACH:**  
Climb to 2000 direct  
YOHOR and hold.

AWOS-3 <b>119.475</b>	MIAMI CENTER <b>134.55 257.7</b>	UNICOM <b>122.7 (CTAF) 0</b>
--------------------------	-------------------------------------	---------------------------------



CATEGORY	A	B	C	D
LP MDA	420-1 360 (400-1)			
LNAV MDA	560-1	500 (500-1)	560-1 3/8	500 (500-1 3/8)
CIRCLING	600-1	538 (600-1)	600-1 1/2 538 (600-1 1/2)	620-2 558 (600-2)

MIRL Rwy 1-19 0  
REIL Rwy 1 and 19 0

SE-3, 07 OCT 2021 to 04 NOV 2021

SE-3, 07 OCT 2021 to 04 NOV 2021

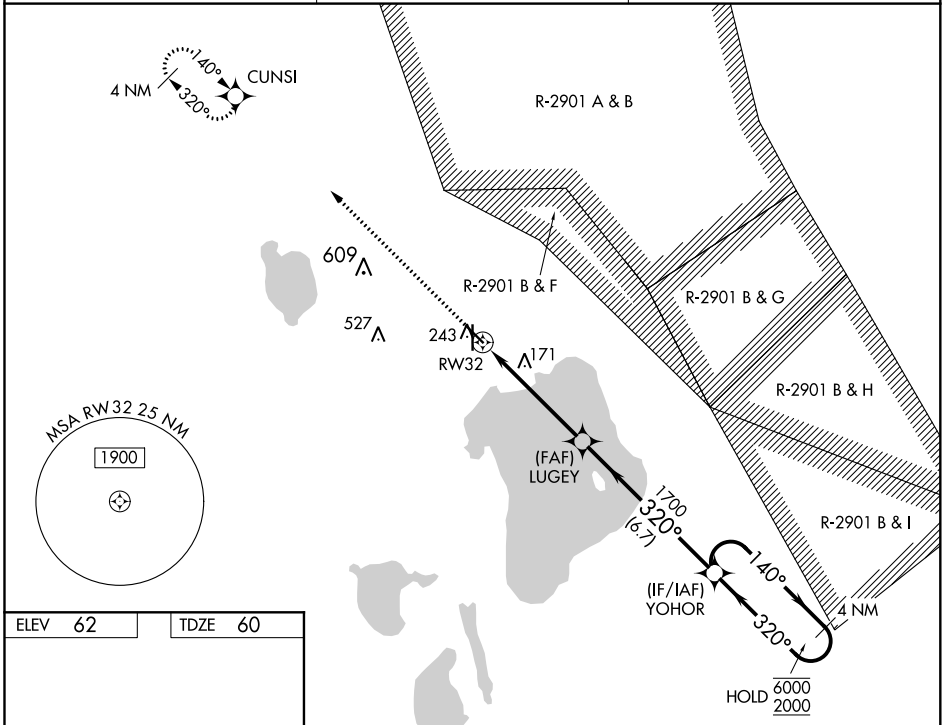
WAAS CH <b>48925</b> <b>W32A</b>	APP CRS <b>320°</b>	Rwy Idg TDZE Apt Elev	<b>4990</b> <b>60</b> <b>62</b>
--	------------------------	-----------------------------	---------------------------------------

# RNAV (GPS) RWY 32

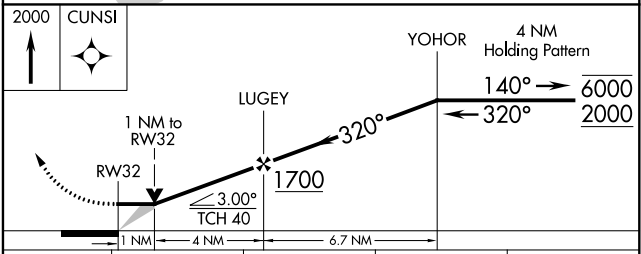
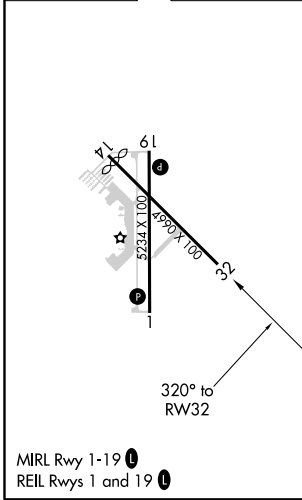
SEBRING RGNL (SEF)

RNP APCH.	MISSED APPROACH: Climb to 2000 direct CUNSI and hold.
<p>Circling Rwy 14 NA at night.</p>	

AWOS-3 <b>119.475</b>	MIAMI CENTER <b>134.55 257.7</b>	UNICOM <b>122.7 (CTAF) 0</b>
--------------------------	-------------------------------------	---------------------------------



ELEV 62	TDZE 60
---------	---------



2000	CUNSI	YOHOR	4 NM Holding Pattern
↑	☀		140° → 6000 ← 320° 2000
		LUGEY	
		1700	
		1 NM	4 NM
		6.7 NM	
CATEGORY	A	B	C
LP MDA	420-1 360 (400-1)		
LNAV MDA	480-1	420 (500-1)	480-1½ 420 (500-1½)
<b>C</b> CIRCLING	600-1	538 (600-1)	600-1½ 880-2¾ 538 (600-1½) 818 (900-2¾)

SE-3, 07 OCT 2021 to 04 NOV 2021

SE-3, 07 OCT 2021 to 04 NOV 2021

APP CRS	Rwy Idg	<b>5234</b>
<b>185°</b>	TDZE	<b>62</b>
	Apt Elev	<b>62</b>

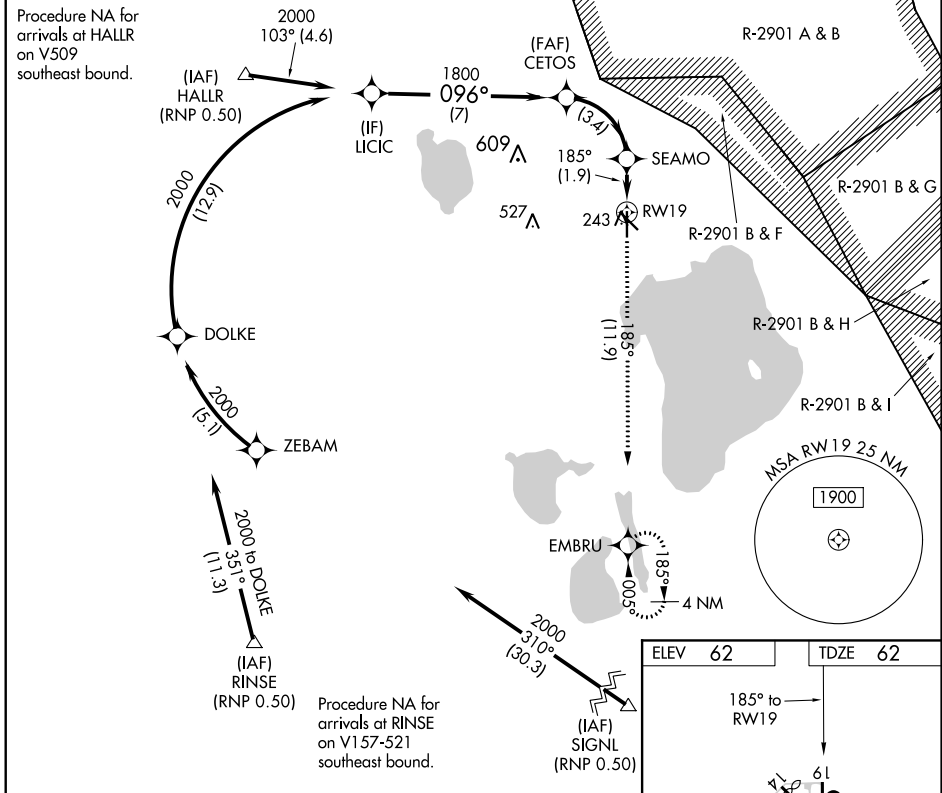
# RNAV (RNP) RWY 19

SEBRING RGNL (SEF)

**▽** For uncompensated Baro-VNAV systems, procedure NA below -15°C (5°F) or above 54°C (130°F). GPS and RF required. Night landing: Rwy 14, 32 NA.

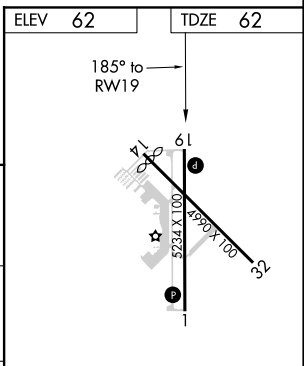
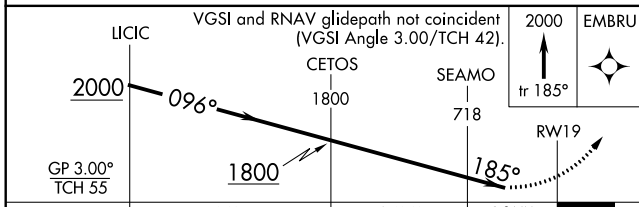
**△** NA MISSED APPROACH: Climb to 2000 on track 185° to EMBRU and hold.

AWOS-3 <b>119.475</b>	MIAMI CENTER <b>134.55 257.7</b>	UNICOM <b>122.7 (CTAF) 0</b>
--------------------------	-------------------------------------	---------------------------------



SE-3, 07 OCT 2021 to 04 NOV 2021

SE-3, 07 OCT 2021 to 04 NOV 2021



CATEGORY	A	B	C	D
RNP 0.30 DA	440-1¼		378 (400-1¼)	

## AUTHORIZATION REQUIRED

MIRL Rwy 1-19 0

REIL Rwy 1 and 19 0