

▼

DEPARTURE ROUTE DESCRIPTION

TAKEOFF RUNWAY 3: Climbing left turn heading 335° or as assigned by ATC, thence. . .

TAKEOFF RUNWAY 21: Climbing right turn heading 335° or as assigned by ATC, thence. . .
. . . expect RADAR vectors to BNYRD, then on track 145° to TFD VORTAC, then on (transition), maintain ATC assigned altitude, expect filed altitude 3 minutes after departure.

TUCSON TRANSITION (BNYRD6.TUS)

FTHLS SIX DEPARTURE (RNAV)
(FTHLS6.FTHLS) 24MAR18

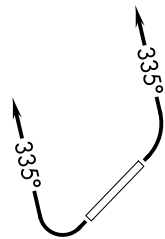
ATIS ★
118.6
CLNC DEL
124.8
GND CON
121.6
SCOTTSDALE TOWER ★
119.9
PHOENIX DEP CON
120.7 239.0

TAKEOFF MINIMUMS

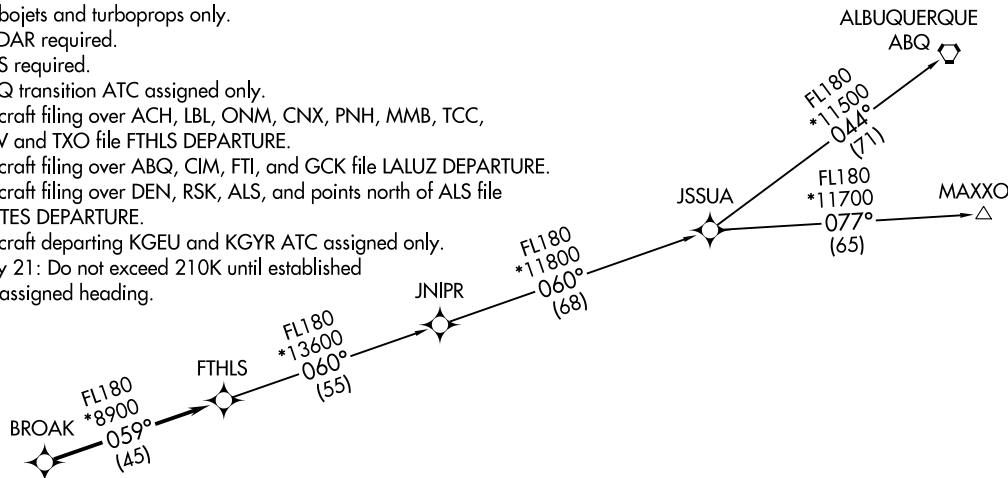
Rwy 3: Standard with minimum climb of 445' per NM to 4600.
Rwy 21: Standard with minimum climb of 300' per NM to 4600.

NOTE: RNAV 1.
NOTE: Turbojets and turboprops only.
NOTE: RADAR required.
NOTE: GPS required.
NOTE: ABQ transition ATC assigned only.
NOTE: Aircraft filing over ACH, LBL, ONM, CNX, PNH, MMB, TCC, IRW and TXO file FTHLS DEPARTURE.
NOTE: Aircraft filing over ABQ, CIM, FTI, and GCK file LALUZ DEPARTURE.
NOTE: Aircraft filing over DEN, RSK, ALS, and points north of ALS file YOTES DEPARTURE.
NOTE: Aircraft departing KGEU and KGYR ATC assigned only.
NOTE: Rwy 21: Do not exceed 210K until established on assigned heading.

**TOP ALTITUDE:
ASSIGNED BY ATC**



N



DEPARTURE ROUTE DESCRIPTION

TAKEOFF RUNWAY 3: Climbing left turn heading 335° or as assigned by ATC, thence. . .
TAKEOFF RUNWAY 21: Climbing right turn heading 335° or as assigned by ATC. Thence. . .
. . . expect RADAR vectors to BROAK, then on track 059° to FTHLS, then on (transition).
Maintain ATC assigned altitude, expect filed altitude 3 minutes after departure.

ALBUQUERQUE TRANSITION (FTHLS6.ABQ)

JNIPR TRANSITION (FTHLS6.JNIPR)

MAXXO TRANSITION (FTHLS6.MAXXO)

NOTE: Chart not to scale.

SCOTTSDALE, ARIZONA
SCOTTSDALE (SDI)

(FTHLS6.FTHLS) 19003
FTHLS SIX DEPARTURE (RNAV)

AL-5651 (FAA)

SCOTTSDALE (SDI)
SCOTTSDALE, ARIZONA

**TOP ALTITUDE:
ASSIGNED BY ATC**

RNAV 1 - GPS.

RADAR required.

PHOENIX DEP CON
120.7 239.0
ATIS ★
118.6
CLNC DEL
124.8
GND CON
121.6
SCOTSDALE TOWER ★
119.9

NOTE: Turbojets and turboprops only.

NOTE: Aircraft requesting FL220 and below must file BLYTHE Transition.

NOTE: Turbojets landing LAX, file WLVRN Transition.

NOTE: Aircraft landing other than LAX and turboprops landing at LAX:
Requesting FL240 and above, file HRRBR Transition.

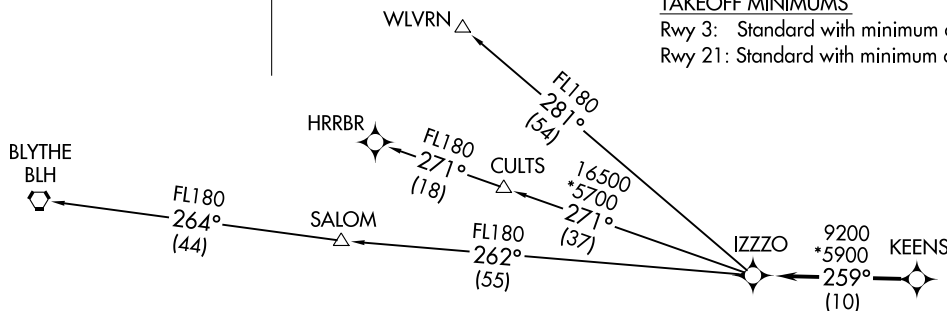
NOTE: Aircraft departing KGEU and KGYR ATC assigned only.

NOTE: Rwy 21: Do not exceed 210K until established on assigned heading.

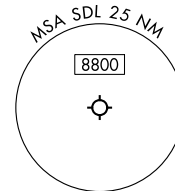
TAKEOFF MINIMUMS

Rwy 3: Standard with minimum climb of 445'/NM to 4600.

Rwy 21: Standard with minimum climb of 300'/NM to 4600.

**DEPARTURE ROUTE DESCRIPTION**TAKEOFF RUNWAY 3: Climbing left turn heading 335° or as assigned by ATC, thence. . .TAKEOFF RUNWAY 21: Climbing right turn heading 335° or as assigned by ATC. Thence. . .

. . . for RADAR vectors to KEENS, then on track 259° to IZZO, then on (transition).
Maintain ATC assigned altitude, expect filed altitude 3 minutes after departure.

BLYTHE TRANSITION (IZZZO8.BLH)HRRBR TRANSITION (IZZZO8.HRRBR)WLVN TRANSITION (IZZZO8.WLVN)

NOTE: Chart not to scale.

IZZZO EIGHT DEPARTURE (RNAV)
(IZZZO8, IZZZO) 25JAN24

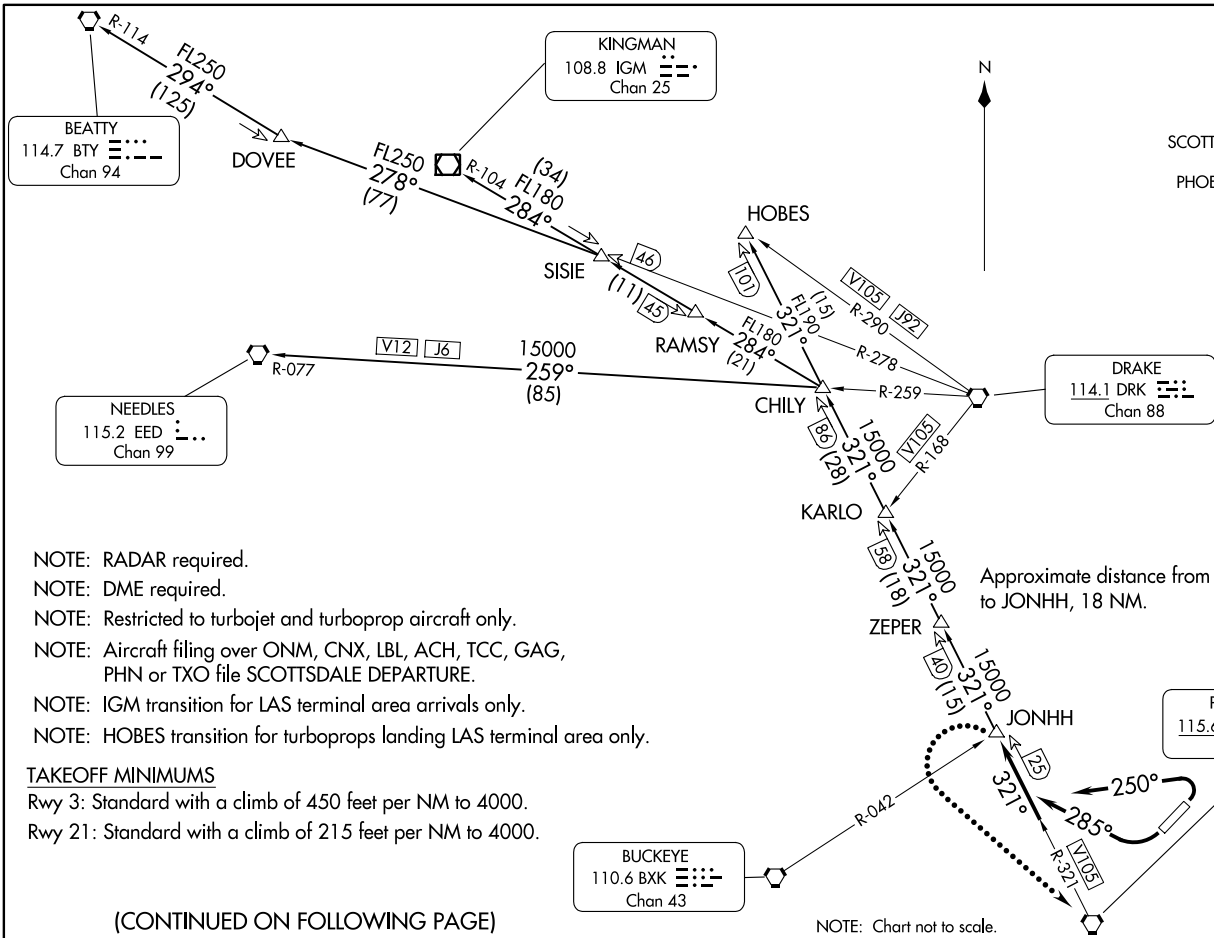
SCOTSDALE, ARIZONA
SCOTSDALE (SDL)

IZZZO EIGHT DEPARTURE (RNAV)
(IZZZO8, IZZZO) 24025

AL-5651 (FAA)

SCOTSDALE (SDL)
SCOTSDALE, ARIZONA

ATIS ★
118.6
CLNC DEL
124.8
GND CON
121.6
SCOTTSDALE TOWER ★
119.9
PHOENIX DEP CON
120.7 239.0



(CONTINUED ON FOLLOWING PAGE)



DEPARTURE ROUTE DESCRIPTION

TAKEOFF RUNWAY 3: Climbing left turn heading 250° to intercept and proceed on PXR R-321 to JONHH INT. Thence. . . .

TAKEOFF RUNWAY 21: Climbing right turn heading 285° to intercept and proceed on PXR R-321 to JONHH INT. Thence. . . .

. . . .on assigned transition.

LOST COMMUNICATIONS: If not in contact with departure control at JONHH INT, turn left direct to PXR VORTAC, thence via assigned transition. Expect filed altitude 3 minutes after departure.

BEATTY TRANSITION (JONHH2.BTY): From over JONHH INT on PXR R-321 to CHILY INT, then on IGM R-104 to SISIE INT, then on DRK R-278 to DOVEE INT, then on BTY R-114 to BTY VORTAC.

HOBES TRANSITION (JONHH2.HOBES): From over JONHH INT on PXR R-321 to HOBES INT.

KINGMAN TRANSITION (JONHH2.IGM): From over JONHH INT on PXR R-321 to CHILY INT, then on IGM R-104 to IGM VOR/DME.

NEEDLES TRANSITION (JONHH2.EED): From over JONHH INT on PXR R-321 to CHILY INT, then on DRK R-259 and EED R-077 to EED VORTAC.

SW-4, 22 FEB 2024 to 21 MAR 2024

SW-4, 22 FEB 2024 to 21 MAR 2024

JUDTH SEVEN DEPARTURE (RNAV)
(JUDTH7.JUDTH) 24MAY18

ATIS★
118.6
CLNC DEL
124.8
GND CON
121.6
SCOTTSDALE TOWER★
119.9
PHOENIX DEP CON
120.7 239.0



DEPARTURE ROUTE DESCRIPTION

TAKEOFF RUNWAY 3: Climbing left turn heading 335° or as assigned by ATC, thence. . . .

TAKEOFF RUNWAY 21: Climbing right turn heading 335° or as assigned by ATC. Thence. . . .

. . . .expect RADAR vectors to GBN VORTAC, then on track 249° to JUDTH, then on (transition). Maintain ATC assigned altitude, expect filed altitude 3 minutes after departure.

MOHAK TRANSITION (JUDTH7.MOHAK)

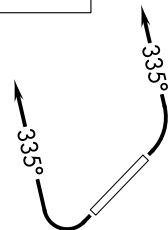
- NOTE: RNAV 1.
NOTE: Turbojets and turboprops only.
NOTE: RADAR required.
NOTE: GPS required.
NOTE: Aircraft departing KGEU and KGYR ATC assigned only.
NOTE: Rwy 21: Do not exceed 210K until established on assigned heading.

TAKEOFF MINIMUMS

- Rwy 3: Standard with minimum climb of 445' per NM to 4600.
Rwy 21: Standard with minimum climb of 300' per NM to 4600.



**TOP ALTITUDE:
ASSIGNED BY ATC**



NOTE: Chart not to scale.

(JUDTH7.JUDTH) 19003
JUDTH SEVEN DEPARTURE (RNAV)

AL-5651 (FAA)

SCOTTSDALE (SDL)
SCOTTSDALE, ARIZONA

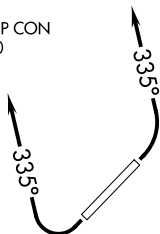
SCOTTSDALE, ARIZONA
SCOTTSDALE (SDL)

KATMN SIX DEPARTURE (RNAV)
(KATMN6.KATMN) 24MAR18

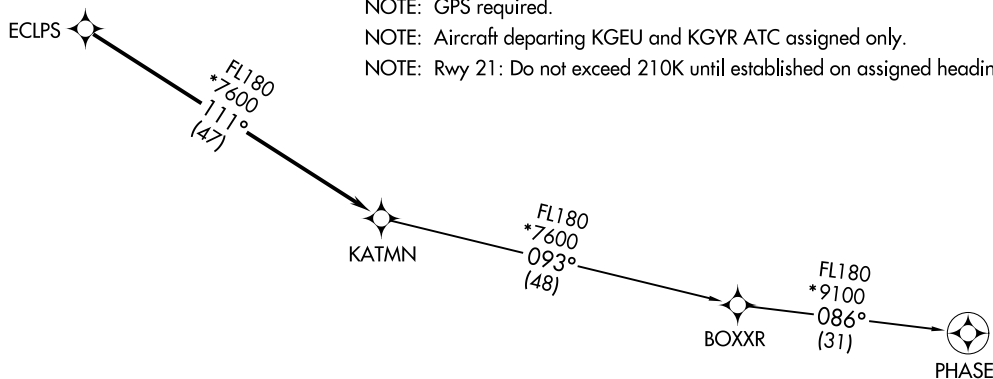
SCOTTSDALE, ARIZONA
SCOTTSDALE (SDL)

ATIS ★
118.6
CLNC DEL
124.8
GND CON
121.6
SCOTTSDALE TOWER ★
119.9
PHOENIX DEP CON
120.7 239.0

TOP ALTITUDE: ASSIGNED BY ATC



N



NOTE: Chart not to scale.



DEPARTURE ROUTE DESCRIPTION

TAKEOFF RUNWAY 3: Climbing left turn heading 335° or as assigned by ATC, thence. . . .

TAKEOFF RUNWAY 21: Climbing right turn heading 335° or as assigned by ATC. Thence. . . .

. . . .on RADAR vectors to ECLPS, then on track 111° to KATMN, then on (transition). Maintain ATC assigned altitude, expect filed altitude 3 minutes after departure.

PHASE TRANSITION (KATMN6.PHASE)

TAKEOFF MINIMUMS

Rwy 3: Standard with minimum climb of 445' per NM to 4600.

Rwy 21: Standard with minimum climb of 300' per NM to 4600.

NOTE: RNAV 1.

NOTE: Turbojets and turboprops only.

NOTE: RADAR required.

NOTE: GPS required.

NOTE: Aircraft departing KGEU and KGYR ATC assigned only.

NOTE: Rwy 21: Do not exceed 210K until established on assigned heading.

(KATMN6.KATMN) 19003
KATMN SIX DEPARTURE (RNAV)

AL-5651 (FAA)

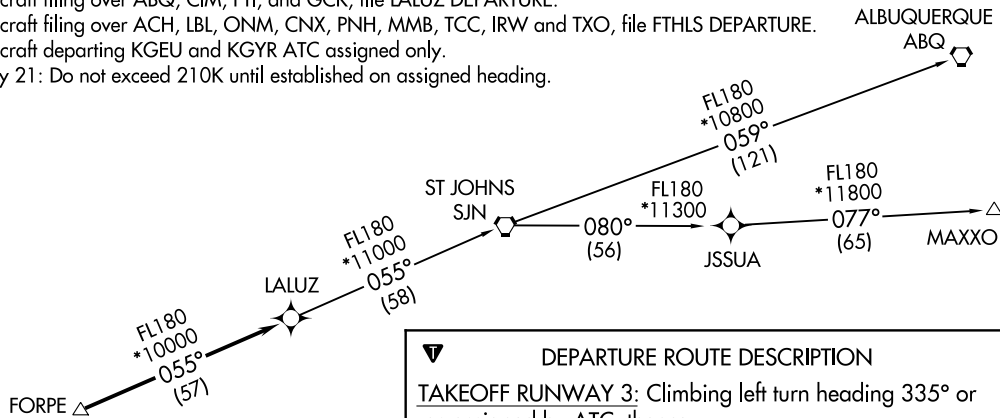
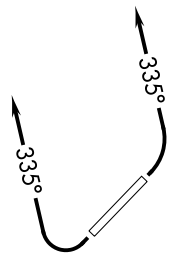
SCOTTSDALE (SDL)
SCOTTSDALE, ARIZONA

LALUZ SIX DEPARTURE (RNAV)
(LALUZ6.LALUZ) 24MAY18

ATIS ★
118.6
CLNC DEL
124.8
GND CON
121.6
SCOTTSDALE TOWER ★
119.9
PHOENIX DEP CON
120.7 239.0

NOTE: RNAV 1.
NOTE: Turbojets and turboprops only.
NOTE: RADAR required.
NOTE: GPS required.
NOTE: SJN TRANSITION for ABQ terminal arrivals only.
NOTE: MAXXO TRANSITION ATC assigned only.
NOTE: Aircraft filing over DEN, RSK, ALS, and points north of ALS, file YOTES DEPARTURE.
NOTE: Aircraft filing over ABQ, CIM, FTI, and GCK, file LALUZ DEPARTURE.
NOTE: Aircraft filing over ACH, LBL, ONM, CNX, PNH, MMB, TCC, IRW and TXO, file FTHLS DEPARTURE.
NOTE: Aircraft departing KGEU and KGYR ATC assigned only.
NOTE: Rwy 21: Do not exceed 210K until established on assigned heading.

**TOP ALTITUDE:
ASSIGNED BY ATC**



TAKEOFF MINIMUMS

Rwy 3: Standard with minimum climb of 445' per NM to 4600.
Rwy 21: Standard with minimum climb of 300' per NM to 4600.

NOTE: Chart not to scale.



DEPARTURE ROUTE DESCRIPTION

TAKEOFF RUNWAY 3: Climbing left turn heading 335° or as assigned by ATC, thence. . . .

TAKEOFF RUNWAY 21: Climbing right turn heading 335° or as assigned by ATC. Thence. . . .

. . . .expect RADAR vectors to FORPE, then on track 055° to LALUZ, then on (transition). Maintain ATC assigned altitude, expect filed altitude 3 minutes after departure.

ALBUQUERQUE TRANSITION (LALUZ6.ABQ)

MAXXO TRANSITION (LALUZ6.MAXXO)

ST JOHNS TRANSITION (LALUZ6.SJN)

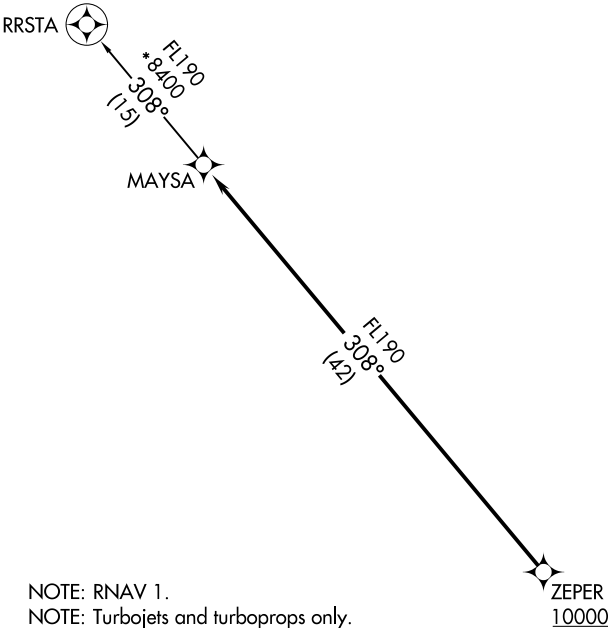
(LALUZ6.LALUZ) 19003
LALUZ SIX DEPARTURE (RNAV)

AL-5651 (FAA)

SCOTTSDALE (SDI)
SCOTTSDALE, ARIZONA

TOP ALTITUDE:
ASSIGNED BY ATC

ATIS★
118.6
CLNC DEL
124.8
GND CON
121.6
SCOTTSDALE TOWER★
119.9
PHOENIX DEP CON
120.7 239.0



NOTE: RNAV 1.
NOTE: Turbojets and turboprops only.
NOTE: RADAR required.
NOTE: GPS required.
NOTE: Aircraft departing KGEU and KGYR ATC assigned only.
Do not file.
NOTE: Rwy 21: Do not exceed 210K until established on
assigned heading.

TAKEOFF MINIMUMS

Rwy 3: Standard with minimum climb of 445' per NM to 4600.
Rwy 21: Standard with minimum climb of 300' per NM to 4600.

NOTE: Chart not to scale.

DEPARTURE ROUTE DESCRIPTION

TAKEOFF RUNWAY 3: Climbing left turn heading 335° or as assigned by ATC, thence. . . .

TAKEOFF RUNWAY 21: Climbing right turn heading 335° or as assigned by ATC. Thence. . . .

. . . .expect RADAR vectors to cross ZEPER at or above 10000, then on track 308° to MAYSA, then on RRSTA TRANSITION. Maintain ATC assigned altitude, expect filed altitude 3 minutes after departure.

RRSTA TRANSITION (MAYSA7.RRSTA)



DEPARTURE ROUTE DESCRIPTION

TAKEOFF RUNWAY 3: Climbing left turn heading 250° to intercept and proceed via PXR R-321 to JONHH INT. Thence. . . .

TAKEOFF RUNWAY 21: Climbing right turn heading 285° to intercept and proceed via PXR R-321 to JONHH INT. Thence. . . .

. . . .via RADAR vectors to (assigned route).

LOST COMMUNICATIONS: If not in contact with departure control at JONHH INT, turn left direct to PXR VORTAC, thence via assigned transition. Expect filed altitude 3 minutes after departure.

ALBUQUERQUE TRANSITION (SCOT7.ABQ): From over JONHH INT on RADAR vectors and PXR R-054 and SJN R-236 to SJN VORTAC, then on SJN R-059 and ABQ R-240 to ABQ VORTAC.

BLYTHE TRANSITION (SCOT7.BLH): From over JONHH INT on RADAR vectors and BXK R-077 to BXK VORTAC, then on BXK R-262 and BLH R-080 to BLH VORTAC.

BUCKEYE TRANSITION (SCOT7.BXK): From over JONHH INT on RADAR vectors and BXK R-077 to BXK VORTAC.

DINGO TRANSITION (SCOT7.DINGO): From over JONHH INT on RADAR vectors and TFD R-343 to TFD VORTAC, then on TFD R-133 to BASER INT, and then on TUS R-295 to DINGO INT.

GILA BEND TRANSITION (SCOT7.GBN): From over JONHH INT on RADAR vectors and PXR R-206 to MOBIE INT, then on GBN R-055 to GBN VORTAC.

OLIIN TRANSITION (SCOT7.OLIIN): From over JONHH INT on RADAR vectors and TFD R-343 to TFD VORTAC, then on TFD R-107 to PUSCH INT, and then on TFD R-107 to OLIIN INT.

TUCSON TRANSITION (SCOT7.TUS): From over JONHH INT on RADAR vectors and TFD R-343 to TFD VORTAC, then on TFD R-121 and TUS R-301 to TUS VORTAC.

SW-4, 22 FEB 2024 to 21 MAR 2024

SW-4, 22 FEB 2024 to 21 MAR 2024

