

WAAS CH <b>63114</b> <b>W18A</b>	APP CRS <b>180°</b>	Rwy ldg <b>5001</b> TDZE <b>978</b> Apt Elev <b>1003</b>
----------------------------------------	------------------------	-------------------------------------------------------------------------

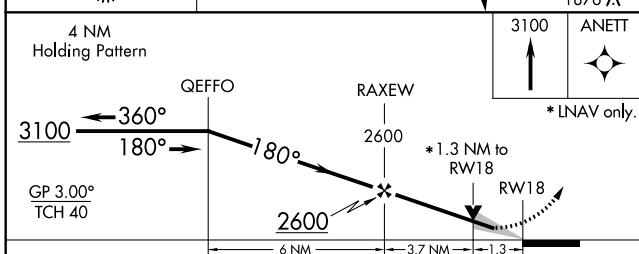
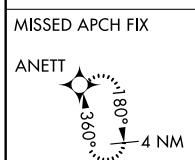
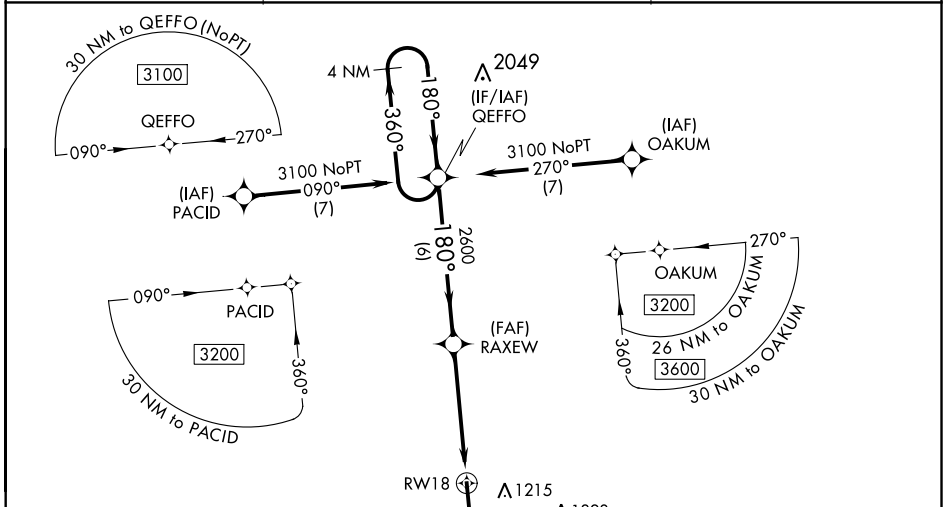
# RNAV (GPS) RWY 18

CENTRAL KENTUCKY RGNL (R.G.A)

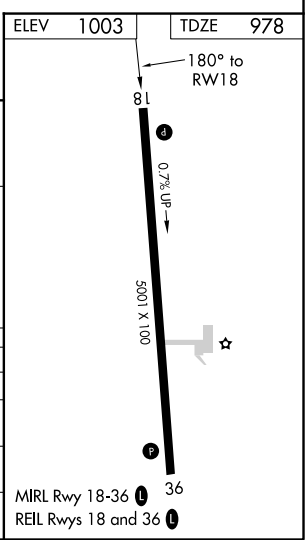
**⚠** For uncompensated Baro-VNAV systems, LNAV/VNAV NA below -16°C (4°F) or above 54°C (130°F). DME/DME RNP-0.3 NA. When local altimeter setting not received, use Lexington altimeter setting and increase LPV DA to 1295 feet, LNAV/VNAV DA to 1341 feet and all MDA 80 feet; increase LPV all Cats visibility ¼ mile; LNAV/VNAV all Cats and LNAV Cats C and D ¼ mile and Circling visibility Cat C ½ mile, Cat D ¼ mile. VDP and Baro-VNAV NA when using Lexington altimeter setting.

**MISSED APPROACH:**  
Climb to 3100 direct ANETT and hold.

AWOS-3 <b>119.625</b>	LEXINGTON APP CON <b>120.15 259.3</b>	UNICOM <b>122.725 (CTAF) ①</b>
--------------------------	------------------------------------------	-----------------------------------



CATEGORY	A	B	C	D
LPV DA		1228-7/8	250 (300-7/8)	
LNAV/VNAV DA		1274-1	296 (300-1)	
LNAV MDA	1440-1	462 (500-1)	1440-13/8	462 (500-13/8)
<b>C</b> CIRCLING	1440-1 437 (500-1)	1520-1 517 (600-1)	1520-1½ 517 (600-1½)	1780-2½ 777 (800-2½)



SE-1, 19 MAY 2022 to 16 JUN 2022

SE-1, 19 MAY 2022 to 16 JUN 2022

WAAS CH <b>40218</b> <b>W36A</b>	APP CRS <b>360°</b>	Rwy Idg <b>5001</b> TDZE <b>1003</b> Apt Elev <b>1003</b>
----------------------------------------	------------------------	-----------------------------------------------------------------

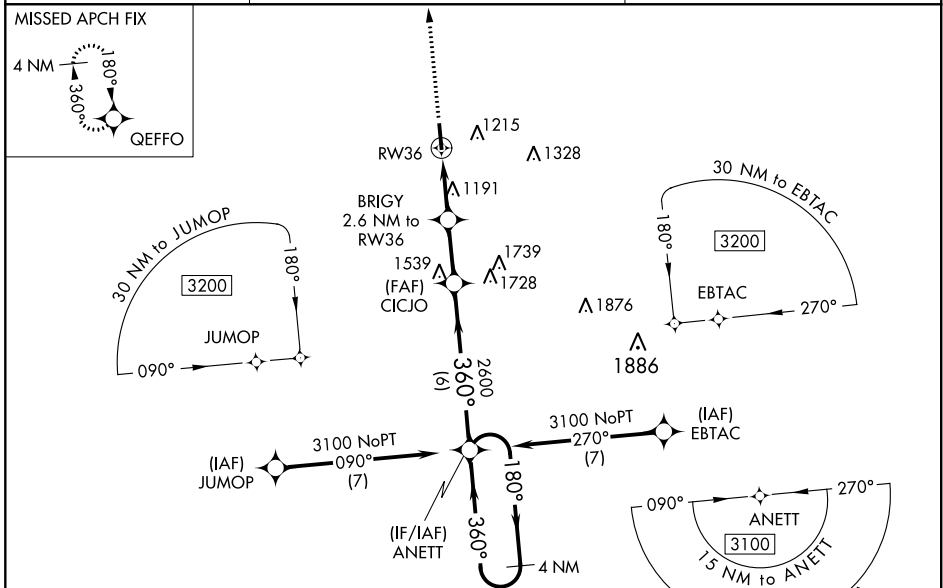
# RNAV (GPS) RWY 36

CENTRAL KENTUCKY RGNL (R.G.A)

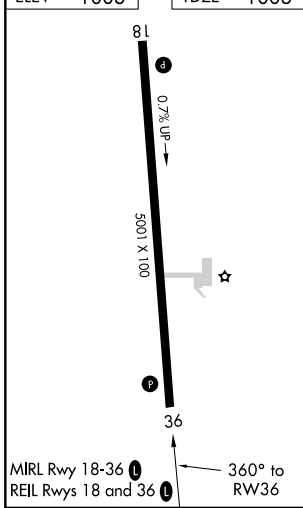
**⚠** For uncompensated Baro-VNAV systems, LNAV/VNAV NA below -16°C (4°F) or above 54°C (130°F). DME/DME RNP-0.3 NA. When local altimeter setting not received, use Lexington altimeter setting and increase LPV DA to 1331 feet, LNAV/VNAV DA to 1345 feet and all MDA 80 feet; increase LPV all Cats and LNAV/VNAV all Cats visibility ¼ mile; increase LNAV Cats C and D ½ mile and Circling visibility Cat D ¼ mile. Helicopter visibility reduction below ¾ SM NA. VDP and Baro-VNAV NA when using Lexington altimeter setting.

MISSED APPROACH: Climb to 3100 direct QEFFO and hold.

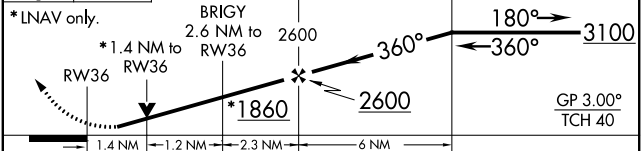
AWOS-3 <b>119.625</b>	LEXINGTON APP CON <b>120.15 259.3</b>	UNICOM <b>122.725 (CTAF) 0</b>
--------------------------	------------------------------------------	-----------------------------------



ELEV 1003	TDZE 1003
-----------	-----------



3100 QEFFO VGSI and RNAV glidepath not coincident (VGSI Angle 3.00/TCH 27). 4 NM Holding Pattern



CATEGORY	A	B	C	D
LPV DA		1264-7/8	261 (300-7/8)	
LNAV/VNAV DA		1278-7/8	275 (300-7/8)	
LNAV MDA	1460-1	457 (500-1)	1460-1 3/8	457 (500-1 3/8)
<b>C</b> CIRCLING	1460-1 457 (500-1)	1520-1 517 (600-1)	1520-1 1/2 517 (600-1 1/2)	1780-2 1/2 777 (800-2 1/2)

SE-1, 19 MAY 2022 to 16 JUN 2022

SE-1, 19 MAY 2022 to 16 JUN 2022

VOR/DME HYK <b>112.6</b> Chan <b>73</b>	APP CRS <b>161°</b>	Rwy Idg TDZE Apt Elev	<b>5001</b> <b>978</b> <b>1003</b>
-----------------------------------------------	------------------------	-----------------------------	------------------------------------------

# VOR RWY 18

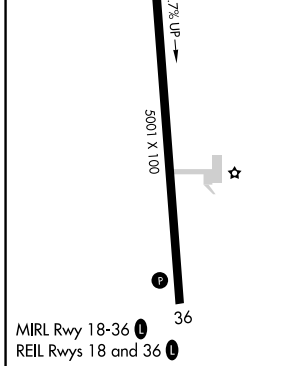
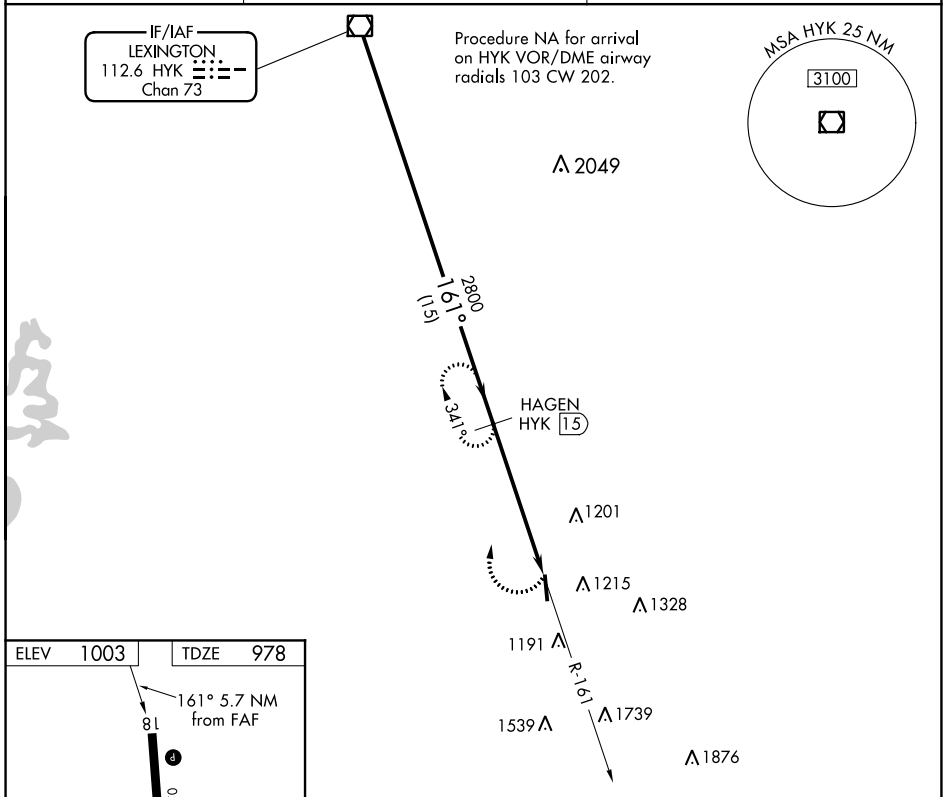
CENTRAL KENTUCKY RGNL (R.G.A)

DME required.

⚠ When local altimeter setting not received, use Lexington altimeter setting and increase all MDA 80 feet; increase S-18 Cats C and D visibility ¼ SM; Circling Cat C ½ SM and Circling Cat D ¼ SM.

MISSED APPROACH: Climbing right turn to 2800 on HYK VOR/DME airway R-161 to HAGEN/15 DME and hold.

AWOS-3 <b>119.625</b>	LEXINGTON APP CON <b>120.15 259.3</b>	UNICOM <b>122.725 (CTAF) 0</b>
--------------------------	------------------------------------------	-----------------------------------



	HYK VOR/DME 2800	161°	2800	HAGEN HYK (15)	2800	HYK (20.7)	2.95% TCH 40
	15 NM		5.7 NM				
CATEGORY	A	B	C	D			
S-18	1460-1	482 (500-1)	1460-1⅓	482 (500-1⅓)			
<b>C</b> CIRCLING	1460-1 457 (500-1)	1520-1 517 (600-1)	1520-1½ 517 (600-1½)	1780-2½ 777 (800-2½)			

SE-1, 19 MAY 2022 to 16 JUN 2022

SE-1, 19 MAY 2022 to 16 JUN 2022