

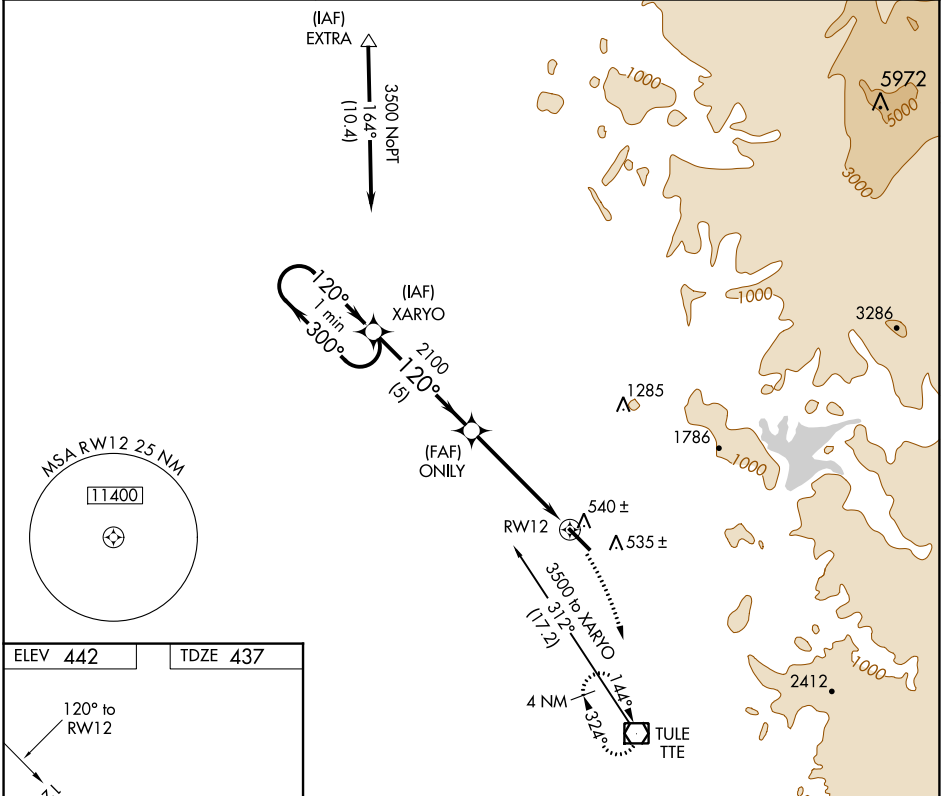
APP CRS	Rwy Idg	<b>5960</b>
<b>120°</b>	TDZE	<b>437</b>
	Apt Elev	<b>442</b>

# GPS RWY 12

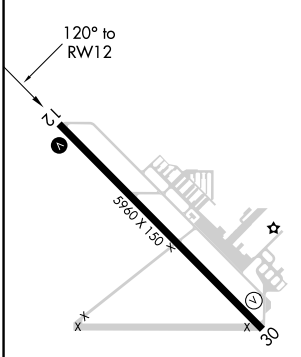
PORTERVILLE MUNI (PTV)

**NA** MISSED APPROACH: Climbing right turn to 3100 direct TTE VOR/DME and hold.

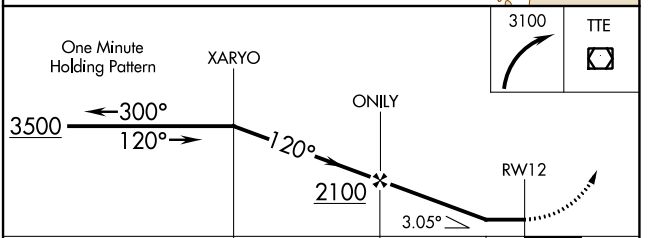
AWOS-3PT <b>134.625</b>	BAKERSFIELD APP CON * <b>120.5</b>	UNICOM <b>122.8 (CTAF)</b>
----------------------------	---------------------------------------	-------------------------------



ELEV <b>442</b>	TDZE <b>437</b>
-----------------	-----------------



REIL Rwy 30  
HIRL Rwy 12-30



CATEGORY	A	B	C	D
S-12	800-1	363 (400-1)		800-1¼ 363 (400-1¼)
CIRCLING	880-1 438 (500-1)	900-1 458 (500-1)	940-1½ 498 (500-1½)	1080-2 638 (700-2)

SW-2, 22 FEB 2024 to 21 MAR 2024

SW-2, 22 FEB 2024 to 21 MAR 2024

APP CRS **314°**  
 Rwy Idg **5960**  
 TDZE **442**  
 Apt Elev **442**

**GPS RWY 30**  
 PORTERVILLE MUNI (P'TV)

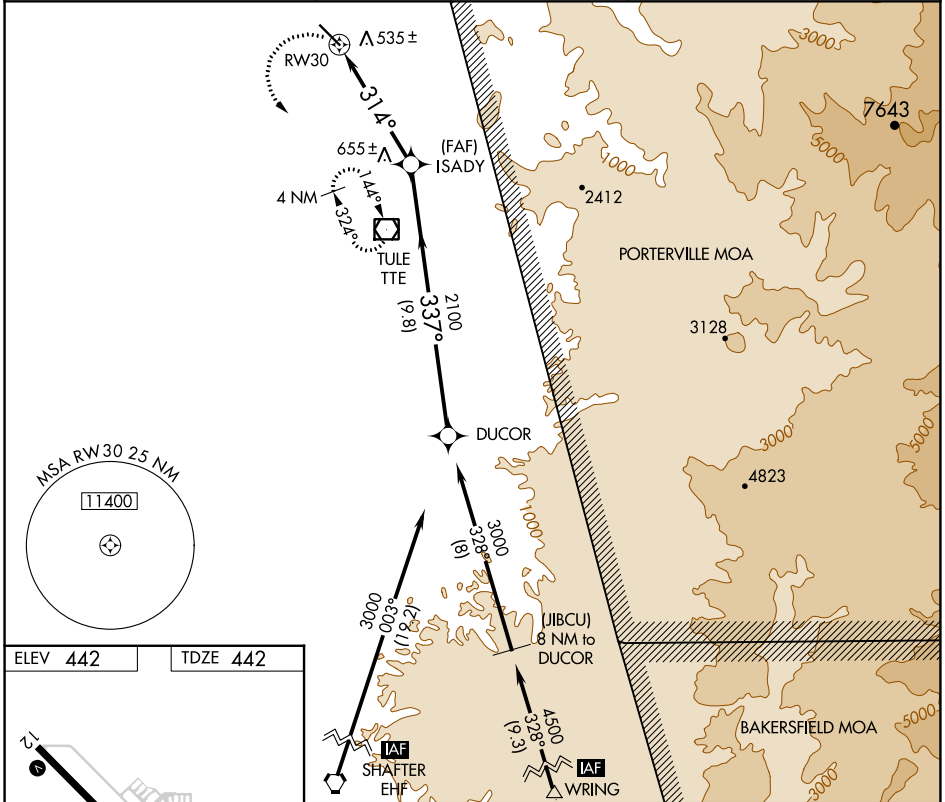
**IAF** ARM APPROACH MODE PRIOR TO IAF.  
**NA** Helicopter visibility reduction below 3/4 SM NA.

MISSED APPROACH: Climbing left turn to 3100 direct TTE  
 VOR/DME and hold.

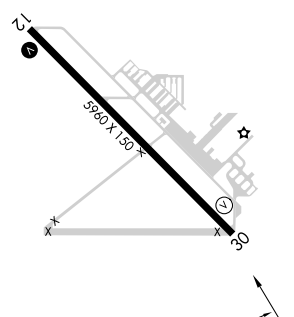
AWOS-3PT  
**134.625**

BAKERFIELD APP CON\*  
**120.5**

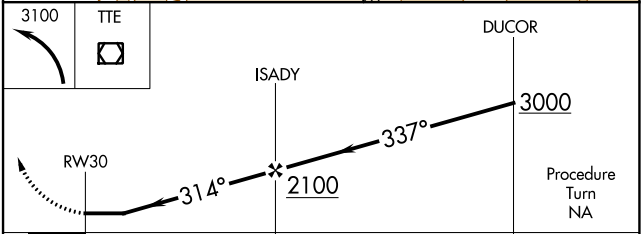
UNICOM  
**122.8 (CTAF)**



ELEV **442** TDZE **442**



REIL Rwy 30  
 HIRL Rwy 12-30



CATEGORY	A	B	C	D
S-30	900-1	458 (500-1)	900-1¼ 458 (500-1¼)	900-1½ 458 (500-1½)
CIRCLING	900-1	458 (500-1)	940-1½ 498 (500-1½)	1080-2 638 (700-2)

SW-2, 22 FEB 2024 to 21 MAR 2024

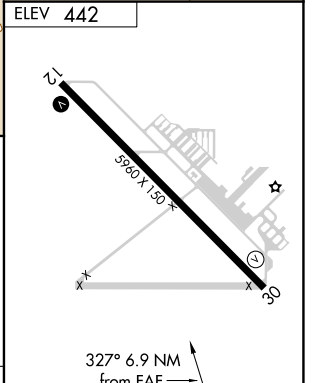
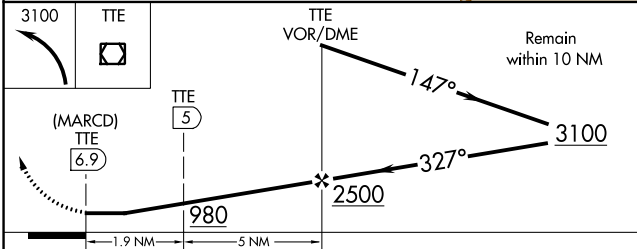
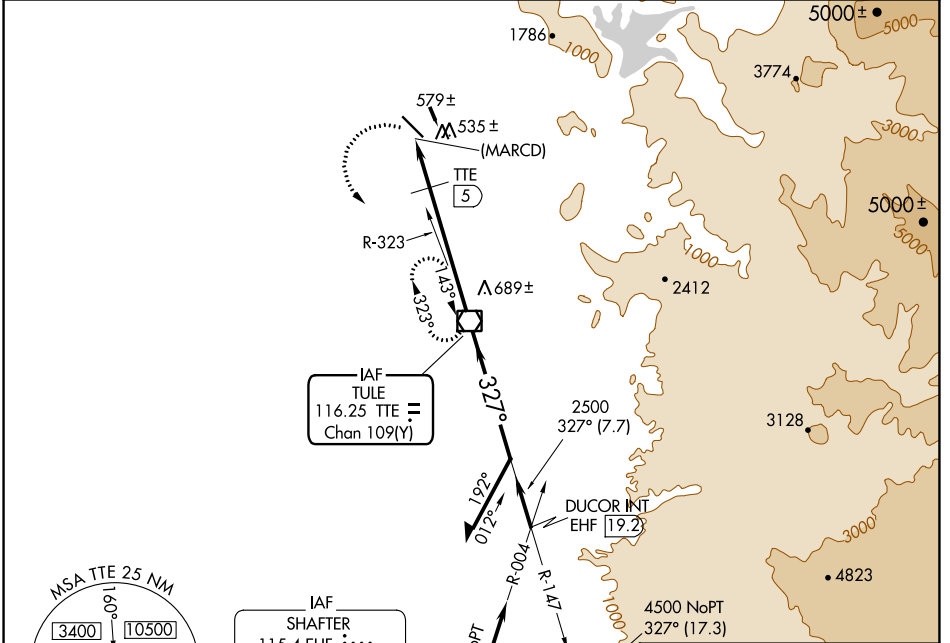
SW-2, 22 FEB 2024 to 21 MAR 2024

VOR/DME TTE <b>116.25</b> Chan <b>109(Y)</b>	APP CRS <b>327°</b>	Rwy Idg TDZE Apt Elev <b>N/A</b> <b>N/A</b> <b>442</b>
--	------------------------	---

**VOR or GPS-A**  
PORTERVILLE MUNI (P'TV)

MISSED APPROACH: Climbing left turn to 3100 direct TTE VOR/DME and hold.

AWOS-3PT <b>134.625</b>	BAKERFIELD APP CON* <b>120.5</b>	UNICOM <b>122.8 (CTAF)</b>
----------------------------	-------------------------------------	-------------------------------



CATEGORY	A	B	C	D
CIRCLING	980-1	538 (600-1)	980-1½ 538 (600-1½)	1000-2 558 (600-2)
DME MINIMA				
CIRCLING	880-1 438 (500-1)	900-1 458 (500-1)	940-1½ 498 (500-1½)	1080-2 638 (700-2)

FAF to MAP 6.9 NM					
Knots	60	90	120	150	180
Min:Sec	6:54	4:36	3:27	2:46	2:18

SW-2, 22 FEB 2024 to 21 MAR 2024

SW-2, 22 FEB 2024 to 21 MAR 2024