

CATHEDRAL ONE DEPARTURE
(CATH1.PSP) 22OCT09

PALM SPRINGS, CALIFORNIA
PALM SPRINGS INTL (PSP)

ATIS 124.65
GND CON 121.9
PALM SPRINGS TOWER*
119.7 377.05
SOCAL DEP CON
126.7 370.95
135.275 251.1

MINIMUM CROSSING ALTITUDES

FOR PSP VORTAC
V16-370-372: 11600 W
V370: 6200 NE
V386: 7600 NW
V388: 6300 W
V137: 11200 NW

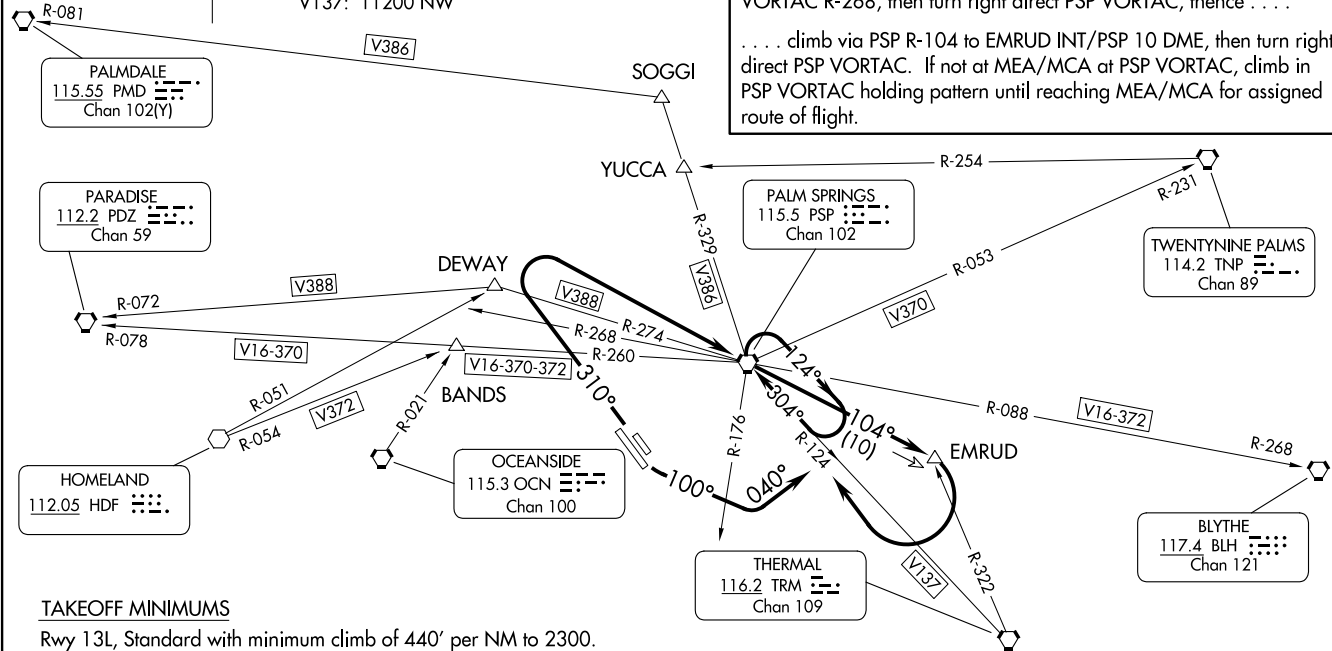
DAGGETT
113.2 DAG
Chan 79

DEPARTURE ROUTE DESCRIPTION

TAKEOFF RUNWAYS 13L/R: Climbing left turn heading 100° to cross PSP VORTAC R-176, then turn left heading 040° to intercept PSP R-104, thence . . .

TAKEOFF RUNWAYS 31L/R: Climb heading 310° to cross PSP VORTAC R-268, then turn right direct PSP VORTAC, thence . . .

. . . climb via PSP R-104 to EMRUD INT/PSP 10 DME, then turn right direct PSP VORTAC. If not at MEA/MCA at PSP VORTAC, climb in PSP VORTAC holding pattern until reaching MEA/MCA for assigned route of flight.



TAKEOFF MINIMUMS

- Rwy 13L, Standard with minimum climb of 440' per NM to 2300.
- Rwy 13R, Standard with minimum climb of 422' per NM to 2300.
- Rwy 31R, Standard with minimum climb of 405' per NM to 4500.
- Rwy 31L, Standard with minimum climb of 386' per NM to 2700.

NOTE: Chart not to scale.

(CATH1.PSP) 24025
CATHEDRAL ONE DEPARTURE

AL-545 (FAA)

PALM SPRINGS INTL (PSP)
PALM SPRINGS, CALIFORNIA

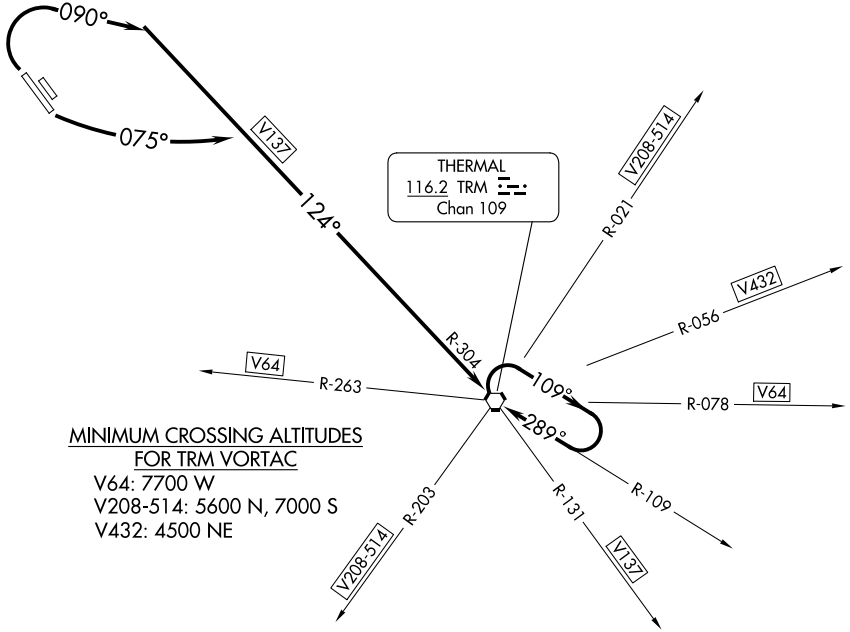
(TRM6.TRM) 24025

THERMAL SIX DEPARTURE

AL-545 (FAA)

PALM SPRINGS INTL (PSP)
PALM SPRINGS, CALIFORNIA

SOCAL DEP CON
126.7 370.95
135.275 251.1
ATIS
124.65
GND CON
121.9



MINIMUM CROSSING ALTITUDES FOR TRM VORTAC

V64: 7700 W
V208-514: 5600 N, 7000 S
V432: 4500 NE

TAKEOFF MINIMUMS

Rwy 13L: Minimum climb of 440' per NM to 2300.
Rwy 13R: Minimum climb of 422' per NM to 2300.
Rwy 31L: Minimum climb of 386' per NM to 2700.
Rwy 31R: Minimum climb of 405' per NM to 2700.

NOTE: Chart not to scale.



DEPARTURE ROUTE DESCRIPTION

TAKEOFF RUNWAYS 13L/R: Climbing left turn heading 075° to intercept TRM R-304 to TRM VORTAC. Thence

TAKEOFF RUNWAYS 31L/R: Climb heading 090° to intercept TRM R-304 to TRM VORTAC. Thence

. . . .If not at MEA/MCA at TRM VORTAC, climb in TRM holding pattern until reaching the MEA/MCA for assigned route of flight.

THERMAL SIX DEPARTURE

(TRM6.TRM) 10APR08

PALM SPRINGS, CALIFORNIA
PALM SPRINGS INTL (PSP)

SW-3, 22 FEB 2024 to 21 MAR 2024

SW-3, 22 FEB 2024 to 21 MAR 2024