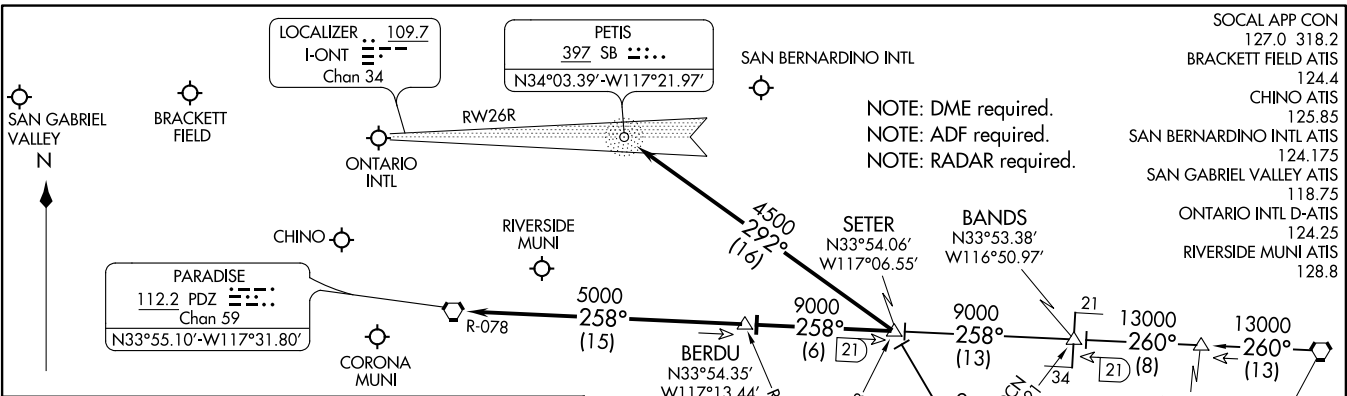


SETER FIVE ARRIVAL
(SETER:SETER5) 17AUG17

SETER FIVE ARRIVAL
(SETER:SETER5) 20310



NOTE: DME required.
NOTE: ADF required.
NOTE: RADAR required.

- SOCAL APP CON 127.0 318.2
- BACKETT FIELD ATIS 124.4
- CHINO ATIS 125.85
- SAN BERNARDINO INTL ATIS 124.175
- SAN GABRIEL VALLEY ATIS 118.75
- ONTARIO INTL D-ATIS 124.25
- RIVERSIDE MUNI ATIS 128.8

ARRIVAL ROUTE DESCRIPTION

JULIAN TRANSITION (JLI:SETER5): From over JLI VORTAC on JLI R-315 to SETER. Thence. . . .
PALM SPRINGS TRANSITION (PSP:SETER5): From over PSP VORTAC on PSP R-260 to BANDS, then on PDZ R-078 to SETER. Thence. . . .

LANDING ONTARIO INTL
RUNWAYS 26L/R: From over SETER on SB NDB 292° course to SB NDB; expect ILS approach.
RUNWAYS 8L/R: From over SETER on PDZ R-078 to BERDU, then on PDZ R-078 to PDZ VORTAC; expect vectors to final approach course.

ALL OTHER AIRPORTS
 From over SETER via PDZ R-078 to BERDU, then on PDZ R-078 to PDZ VORTAC; expect vectors to final approach course.

HOMELAND
113.4 HDF

OCEANSIDE
115.3 OCN
Chan 100

JULIAN
114.0 JLI
Chan 87
N33°08.43'-W116°35.16'
L-4, H-4

PALM SPRINGS
115.5 PSP
Chan 102
N33°52.20'-W116°25.79'

ROTHY
N33°35.59'-W116°53.76'
**VERTICAL NAVIGATION
PLANNING INFORMATION**
Expect 12000

L-4, H-4
**VERTICAL NAVIGATION
PLANNING INFORMATION**
Expect 16000

**VERTICAL NAVIGATION
PLANNING INFORMATION**
Expect FL240

NOTE: Chart not to scale.

AL-965 (FAA)

ONTARIO, CALIFORNIA

ONTARIO, CALIFORNIA

ARRIVAL ROUTE DESCRIPTION

HECTOR TRANSITION (HEC.ZIGGY7): From over HEC VORTAC on HEC R-211 and PDZ R-030 to ZIGGY. Thence

PALMDALE TRANSITION (PMD.ZIGGY7): From over PMD VORTAC on PMD R-104 to HITOP, then on HDF R-332 to ZIGGY. Thence

SHAFTER TRANSITION (EHF.ZIGGY7): From over EHF VORTAC on EHF R-128 and PMD R-295 to PMD VORTAC, then on PMD R-104 to HITOP, then on HDF R-332 to ZIGGY. Thence

TULE TRANSITION (TTE.ZIGGY7): From over TTE VOR/DME on TTE R-147 and PMD R-295 to PMD VORTAC, then on PMD R-104 to HITOP, then on HDF R-332 to ZIGGY. Thence

LANDING ONTARIO INTL

RUNWAYS 8L/R: From over ZIGGY on PDZ R-030 to PDZ VORTAC; expect RADAR vectors to final approach course.

RUNWAYS 26 L/R: From over ZIGGY direct PETIS NDB or on PDZ R-030 to PETIS; expect RADAR vectors for ILS approach.

ALL OTHER AIRPORTS

From over ZIGGY on PDZ R-030 to PDZ VORTAC; expect RADAR vectors to final approach course.

SW-3, 03 DEC 2020 to 31 DEC 2020

SW-3, 03 DEC 2020 to 31 DEC 2020