


LOC I-PKB 110.7	APP CRS 027°	Rwy Idg TDZE Apt Elev	6780 830 859
---------------------------	------------------------	-----------------------------	---

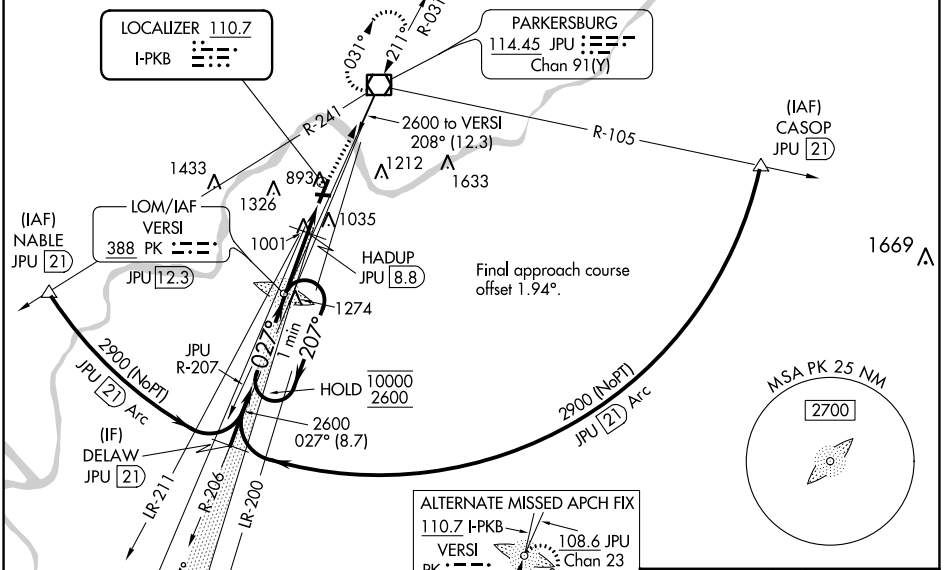
ILS or LOC RWY 3
MID-OHIO VALLEY RGNL (PKB)

NA Circling Rwy 10, 28 NA at night. Rwy 3 helicopter visibility reduction below RVR 4000 NA. When local altimeter setting not received, use Athens/Albany altimeter setting: increase DA to 1301 feet and visibility all Cats ¼ SM; increase all MDAs 100 feet and visibility Cats C and D ½ SM. For inop ALS, increase S-LOC 3 Cat A/B and S-LOC 3 HADUP fix minimums (DME required) Cat A/B visibility to RVR 5500. For inop ALS when using Athens/Albany altimeter setting, increase S-ILS 3 all Cats visibility to 1½ SM and S-LOC 3 all Cats and S-LOC 3 HADUP fix minimums (DME required) Cat A/B visibility to RVR 5500.

MALSR 

MISSED APPROACH: Climb to 1400 then climbing right turn to 2700 direct JPU VOR/DME and hold.

ATIS 124.35	INDIANAPOLIS CENTER 125.55 317.475	PARKERSBURG TOWER * 123.7 (CTAF) 257.8	GND CON 126.45	UNICOM 122.95
-----------------------	--	---	--------------------------	-------------------------



NE-4, 22 FEB 2024 to 21 MAR 2024

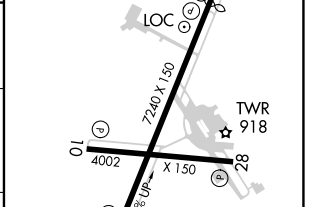
NE-4, 22 FEB 2024 to 21 MAR 2024

ALTERNATE MISSED APCH FIX
110.7 I-PKB
VERSI PK 388
JPU 12.3
108.6 JPU Chan 23

ELEV 859	D TDZE 830
HIRL Rwys 3-21 and 10-28	REIL Rwy 10, 21
REIL Rwy 28	

One Minute Holding Pattern

VERS LOM JPU 12.3
HADUP JPU 8.8
* LOC only 1480 when using Athens/Albany altimeter setting.



CATEGORY	A	B	C	D
S-ILS 3	1201/40 371 (400-¾)			
S-LOC 3	1380/40	550 (600-¾)	1380/60	550 (600-1¼)
CIRCLING	1380-1	521 (600-1)	781 (800-2¼)	781 (800-2½)
HADUP FIX MINIMUMS (DME REQUIRED)				
S-LOC 3	1260/40 430 (500-¾)			
CIRCLING	1320-1 461 (500-1)	1380-1 521 (600-1)	1640-2¼ 781 (800-2¼)	1640-2½ 781 (800-2½)

FAF to MAP 5.3 NM					
Knots	60	90	120	150	180
Min:Sec	5:18	3:32	2:39	2:07	1:46

WAAS CH 97627 W10A	APP CRS 103°	Rwy Idg 4002 TDZE 831 Apt Elev 859
--	------------------------	---

RNAV (GPS) RWY 10

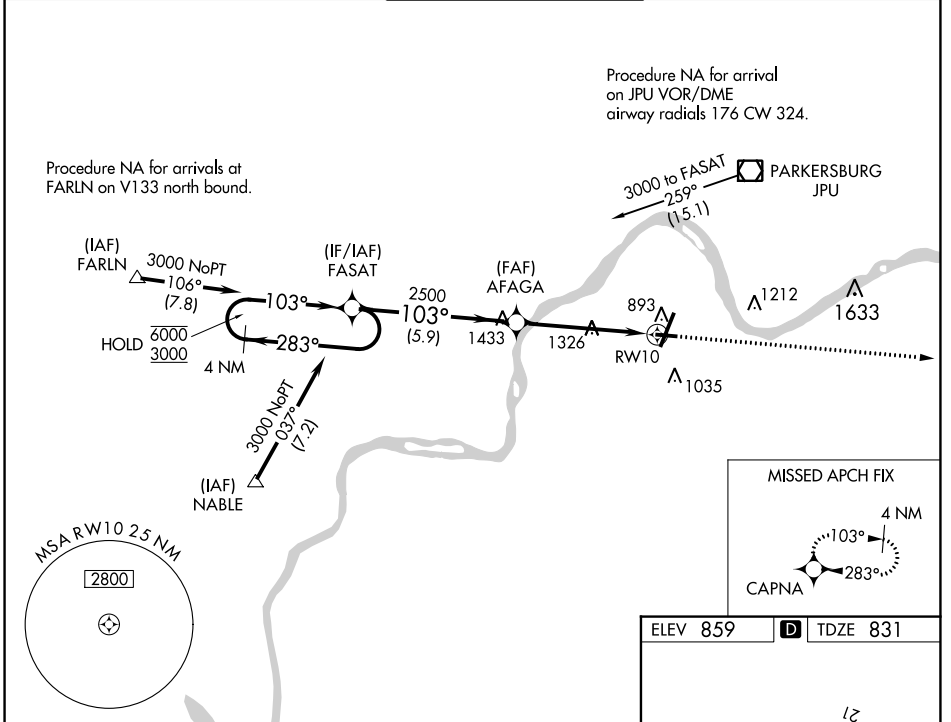
MID-OHIO VALLEY RGNL (PKB)

RNP APCH.

▼ Rwy 10 helicopter visibility reduction below 1 SM NA. When local altimeter setting not received, use Athens/Albany altimeter setting and increase all MDA 100 feet, increase visibility LP all Cats, LNAV all Cats and Circling Cat D ½ SM, and Circling Cats A/C ¼ SM. Straight-in Rwy 10 NA at night, Circling Rwy 10, 28 NA at night.

MISSED APPROACH: Climb to 3000 direct CAPNA and hold.

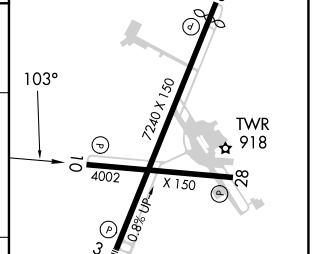
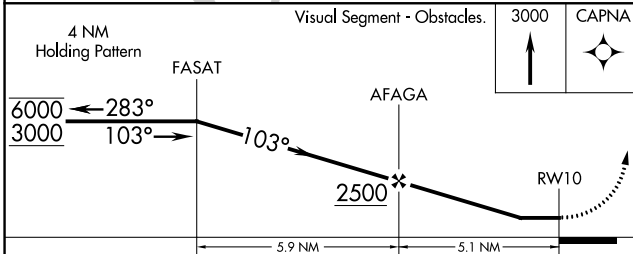
ATIS 124.35	INDIANAPOLIS CENTER 125.55 317.475	PARKERSBURG TOWER * 123.7 (CTAF) 257.8	GND CON 126.45	UNICOM 122.95
-----------------------	--	--	--------------------------	-------------------------



NE-4, 22 FEB 2024 to 21 MAR 2024

NE-4, 22 FEB 2024 to 21 MAR 2024

ELEV 859	D TDZE 831
----------	-------------------



CATEGORY	A	B	C	D
LP MDA	1580-1 749 (800-1)	1580-1½ 749 (800-1¼)	1580-2	749 (800-2)
LNAV MDA	1600-1 769 (800-1)	1600-1½ 769 (800-1¼)	1600-2½	769 (800-2½)
CIRCLING	1600-1 741 (800-1)	1600-1½ 741 (800-1¼)	1640-2½	781 (800-2½)

HIRL Rwy 3-21 and 10-28 **1**
REIL Rwy 10 and 21 **1**
REIL Rwy 28

WAAS CH 86727 W21A	APP CRS 210°	Rwy Idg TDZE Apt Elev	6780 857 859
--	------------------------	-----------------------------	---

RNAV (GPS) RWY 21

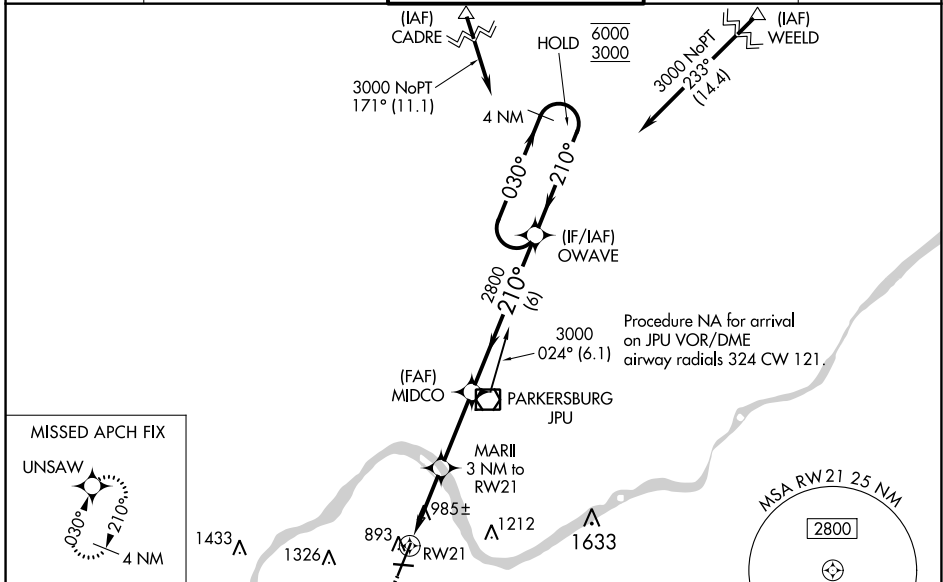
MID-OHIO VALLEY RGNL (PKB)

RNP APCH.

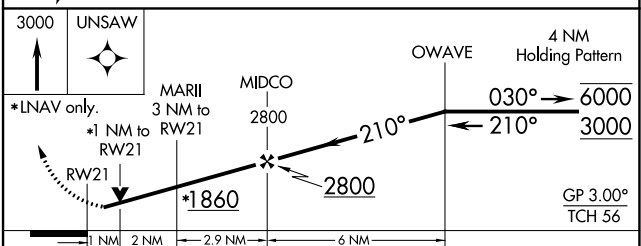
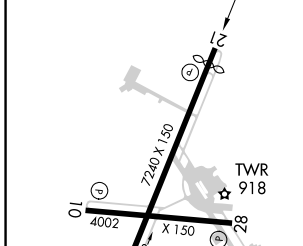
Baro-VNAV and VDP NA when using Athens/Albany altimeter setting. Rwy 21 helicopter visibility reduction below $\frac{3}{4}$ SM NA. For uncompensated Baro-VNAV systems, procedure NA below -17°C or above 38°C . When local altimeter setting not received, use Athens/Albany altimeter setting: increase LPV DA to 1249 feet and visibility all Cats $\frac{1}{2}$ SM; increase LNAV/VNAV DA to 1237 feet and visibility all Cats $\frac{1}{2}$ SM; increase all MDAs 100 feet and visibility Cat C/D $\frac{1}{2}$ SM. Circling Rwy 10, 28 NA at night.

MISSED APPROACH:
Climb to 3000 direct UNSAW and hold.

ATIS 124.35	INDIANAPOLIS CENTER 125.55 317.475	PARKERSBURG TOWER * 123.7 (CTAF) 0 257.8	GND CON 126.45	UNICOM 122.95
-----------------------	--	--	--------------------------	-------------------------



ELEV 859	D	TDZE 857
----------	----------	----------



CATEGORY	A	B	C	D
LPV DA		1149- $\frac{7}{8}$	292 (300- $\frac{7}{8}$)	
LNAV/VNAV DA		1137- $\frac{7}{8}$	280 (300- $\frac{7}{8}$)	
LNAV MDA	1240-1	383 (400-1)	1240-1 $\frac{1}{2}$	383 (400-1 $\frac{1}{2}$)
CIRCLING	1320-1 461 (500-1)	1380-1 521 (600-1)	1640-2 $\frac{1}{4}$ 781 (800-2 $\frac{1}{4}$)	1640-2 $\frac{1}{2}$ 781 (800-2 $\frac{1}{2}$)

REIL Rwy 28
REIL Rwy 10, 21
HIRL Rwy 3-21 and 10-28

NE-4, 22 FEB 2024 to 21 MAR 2024

NE-4, 22 FEB 2024 to 21 MAR 2024

WAAS CH 61227 W28A	APP CRS 283°	Rwy Idg TDZE Apt Elev	4002 839 859
--	------------------------	-----------------------------	---

RNAV (GPS) RWY 28

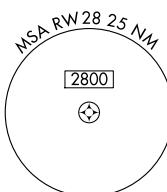
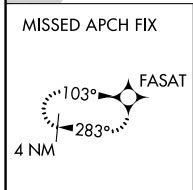
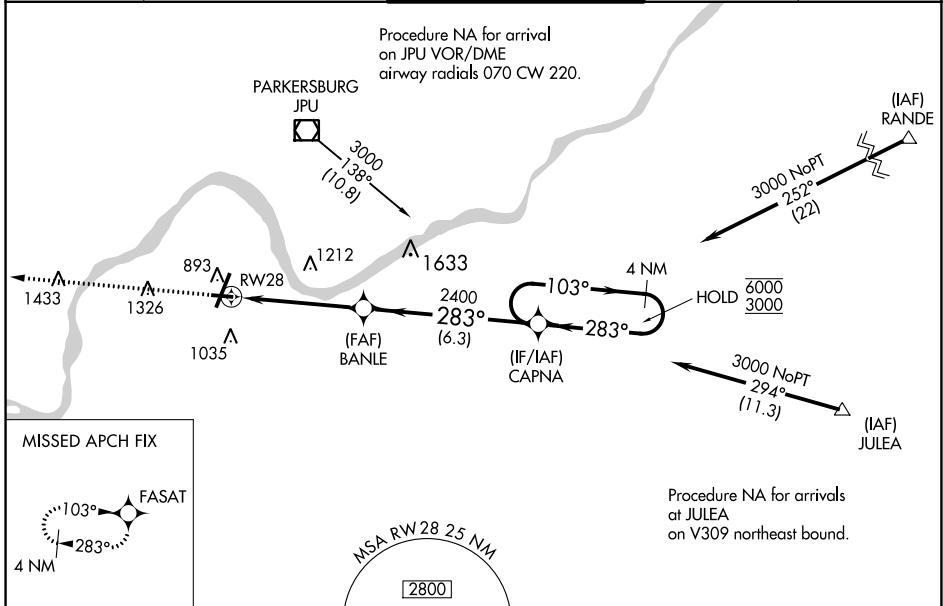
MID-OHIO VALLEY RGNL (PKB)

RNP APCH.

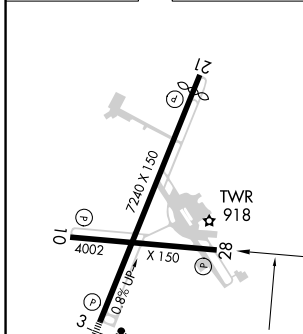
▼ Rwy 28 helicopter visibility reduction below 1 SM NA. When local altimeter setting not received, use Athens/Albany altimeter setting and increase all MDA 100 feet, increase LP/LNAV Cats C/D visibility ¼ SM and Circling Cat C/D ½ SM.
▲ Straight-in Rwy 28 NA at night, Circling Rwy 10, 28 NA at night.

MISSED APPROACH: Climb to 3000 direct FASAT and hold.

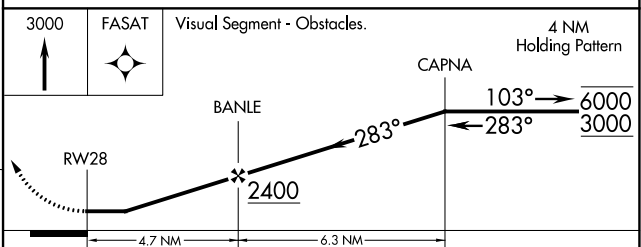
ATIS 124.35	INDIANAPOLIS CENTER 125.55 317.475	PARKERSBURG TOWER * 123.7 (CTAF) 257.8	GND CON 126.45	UNICOM 122.95
-----------------------	--	--	--------------------------	-------------------------



ELEV 859	D TDZE 839
----------	-------------------



REIL Rwy 28	HIRL Rws 3-21 and 10-28	REIL Rwy 10, 21
-------------	-------------------------	-----------------



CATEGORY	A	B	C	D
LP MDA	1300-1	461 (500-1)	1300-1½	461 (500-1½)
LNAV MDA	1320-1	481 (500-1)	1320-1½	481 (500-1½)
CIRCLING	1320-1 461 (500-1)	1380-1 521 (600-1)	1640-2¼ 781 (800-2¼)	1640-2½ 781 (800-2½)

NE-4, 22 FEB 2024 to 21 MAR 2024

NE-4, 22 FEB 2024 to 21 MAR 2024

WAAS CH 77906 W03A	APP CRS 030°	Rwy Idg 6780 TDZE 830 Apt Elev 859
--	------------------------	---

RNAV (GPS) RWY 3

MID-OHIO VALLEY RGNL (PKB)

RNP APCH.

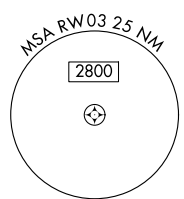
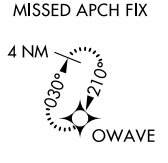
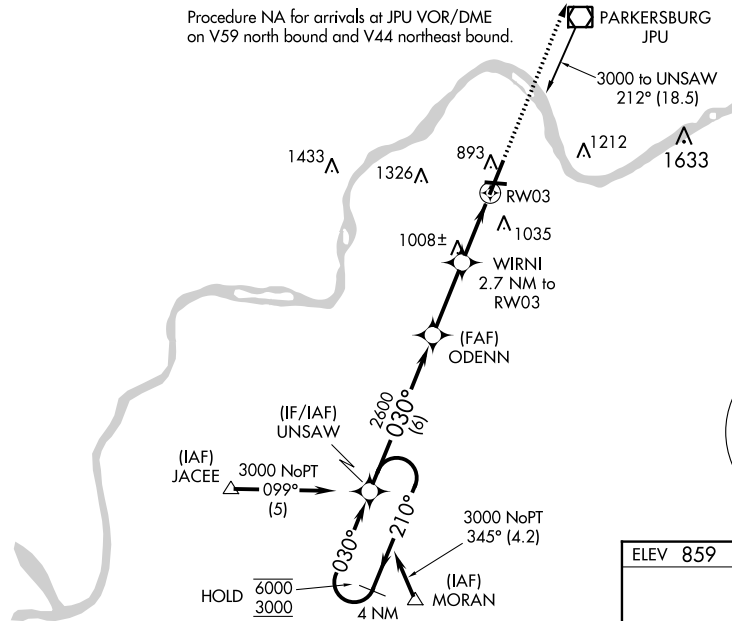
▼ Circling Rwy 10, 28 NA at night. Rwy 3 helicopter visibility reduction below RVR 4000 NA.
 ▲ For uncompensated Baro-VNAV systems, LNAV/VNAV NA below -17°C or above 38°C.
 ▲ When local altimeter setting not received, use Athens/Albany altimeter setting: increase LPV DA to 1302 feet and visibility all Cats ¼ SM; increase LNAV/VNAV DA to 1436 feet and visibility all Cats ¼ SM; increase all MDAs 100 feet and visibility Cats C and D ½ SM.
 For inop ALS, increase LNAV/VNAV all Cats visibility to 1½ SM and LNAV Cats A/B visibility to RVR 5500. For inop ALS, when using Athens/Albany altimeter setting, increase LPV all Cats visibility to 1½ SM and LNAV/VNAV all Cats visibility to 1¾ SM.



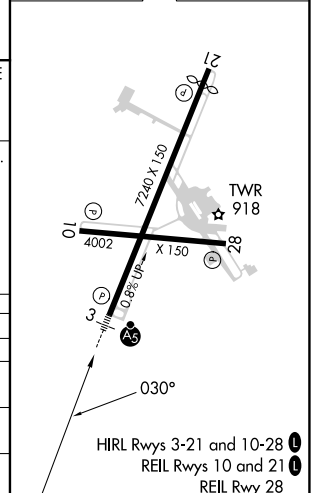
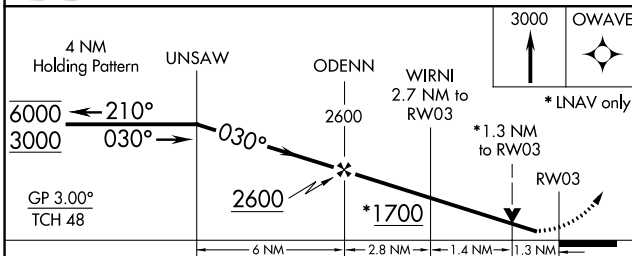
MISSED APPROACH:
Climb to 3000 direct
OWAVE and hold.

ATIS 124.35	INDIANAPOLIS CENTER 125.55 317.475	PARKERSBURG TOWER * 123.7 (CTAF) 257.8	GND CON 126.45	UNICOM 122.95
-----------------------	--	--	--------------------------	-------------------------

Procedure NA for arrivals at JPU VOR/DME on V59 north bound and V44 northeast bound.



ELEV 859	D TDZE 830
----------	-------------------



CATEGORY	A	B	C	D
LPV DA		1202/40	372 (400-¾)	
LNAV/VNAV DA		1336/60	505 (500-1½)	
LNAV MDA		1260/40	430 (500-¾)	
CIRCLING	1320-1 461 (500-1)	1380-1 521 (600-1)	1640-2¼ 781 (800-2¼)	1640-2½ 781 (800-2½)

NE-4, 22 FEB 2024 to 21 MAR 2024

NE-4, 22 FEB 2024 to 21 MAR 2024

HIRL Rwy 3-21 and 10-28
REIL Rwy 10 and 21
REIL Rwy 28

VOR/DME JPU 114.45 Chan 91 (Y)	APP CRS 211°	Rwy Idg 6780 TDZE 857 Apt Elev 859
--	------------------------	---

VOR RWY 21

MID-OHIO VALLEY RGNL (PKB)

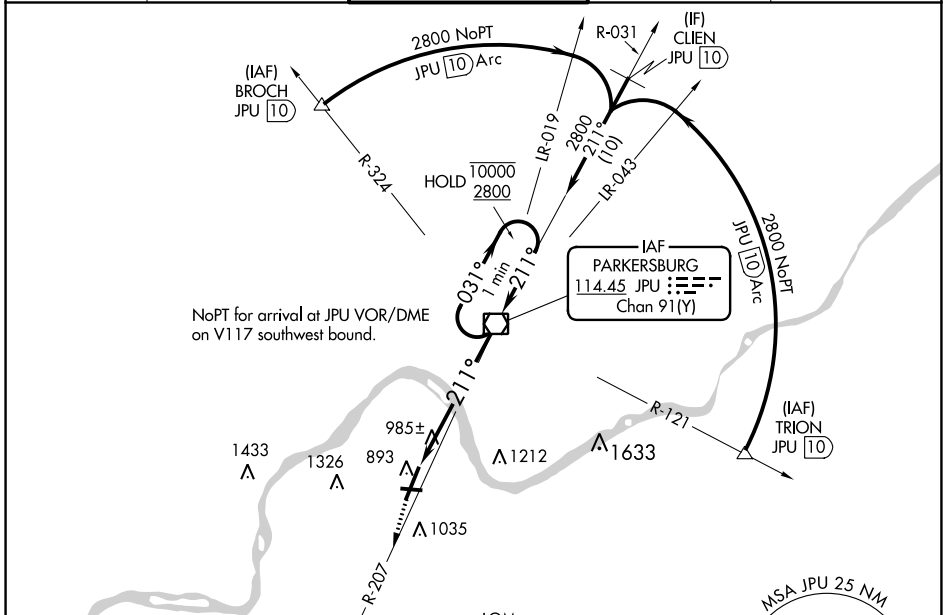
ADF or DME required.

▼ Circling Rwy 10, 28 NA at night. Rwy 21 helicopter visibility reduction below 3/4 SM NA. VDP NA when using Athens/Albany altimeter setting. When local altimeter setting not received, use Athens/Albany altimeter setting and increase all MDA 100 feet, increase S-21 and Circling Cats C/D visibility 1/2 SM.

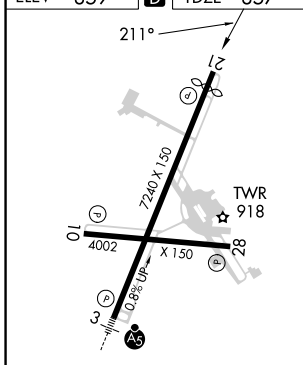
▲ NA

MISSED APPROACH: Climb to 2600 on JPU VOR/DME R-207 to VERSI LOM/JPU 12.3 DME and hold.

ATIS 124.35	INDIANAPOLIS CENTER 125.55 317.475	PARKERSBURG TOWER* 123.7 (CTAF) 257.8	GND CON 126.45	UNICOM 122.95
-----------------------	--	--	--------------------------	-------------------------



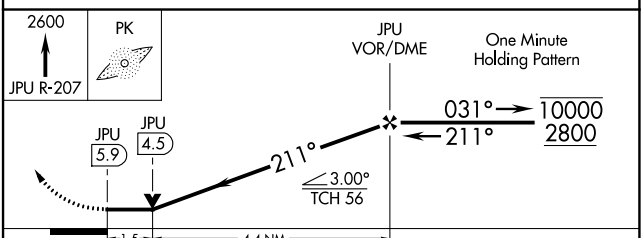
ELEV 859	D	TDZE 857
----------	----------	----------



REIL Rwy 28
HIRL Rwys 3-21 and 10-28
REIL Rwy 10, 21

FAF to MAP 5.9 NM

Knots	60	90	120	150	180
Min:Sec	5:54	3:56	2:57	2:22	1:58



CATEGORY	A	B	C	D
S-21	1380-1 523 (600-1)		1380-1½ 523 (600-1½)	1380-1¾ 523 (600-1¾)
CIRCLING	1380-1 521 (600-1)		1640-2¼ 781 (800-2¼)	1640-2½ 781 (800-2½)

NE-4, 22 FEB 2024 to 21 MAR 2024

NE-4, 22 FEB 2024 to 21 MAR 2024