

# HILLS or LOC Y RWY 14L

[USAF]

TYNDALL AFB (KPAM)

LOC 1-TYF	APCH CRS	Rwy Idg	<b>10,008</b>
<b>111.5</b>	<b>138°</b>	TDZE	<b>14</b>
		Appt Elev	<b>17</b>

▼ When ALS Inop, increase RVR to 40, vis to 3/8 mile.  
 \*\* When ALS Inop, increase vis to 1 1/8 miles.



MISSED APPROACH: Track outbound PAM TACAN R-140 to 3 DME (NORWE), then turn left to join PAM R-004 to 1.5 DME (NENCY) and hold. Maintain 3000.

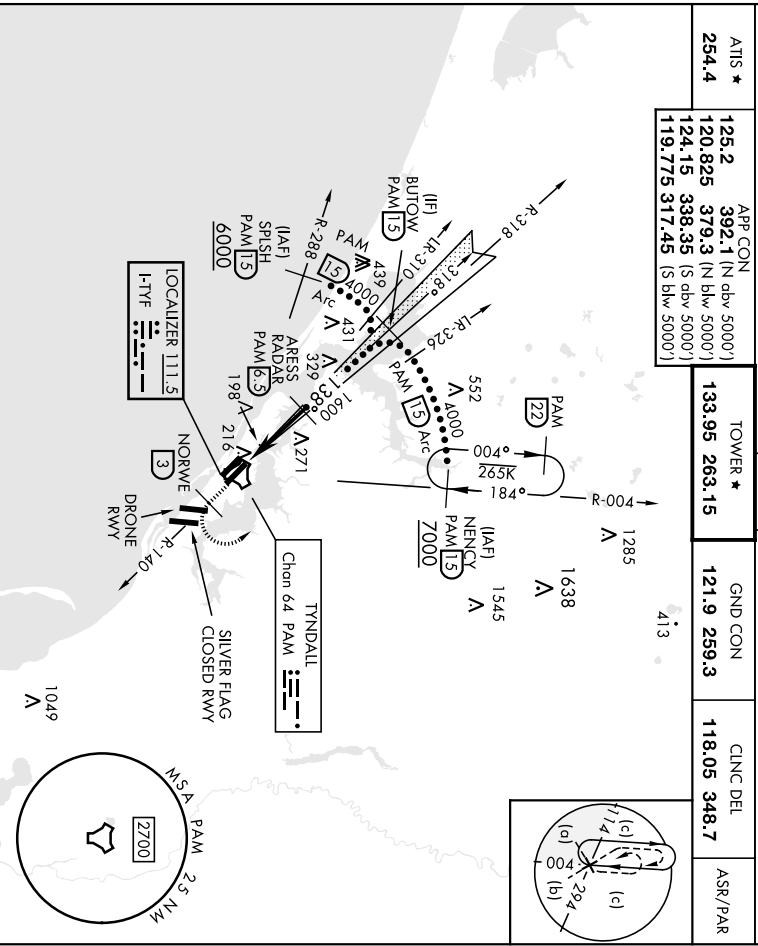
ATIS *	APP CON
<b>254.4</b>	<b>392.1</b> (N dbw 5000') <b>120.825</b> <b>379.3</b> (N blw 5000') <b>124.15</b> <b>338.35</b> (S dbw 5000') <b>119.775</b> <b>317.45</b> (S blw 5000')

TOWER \* **133.95 263.15**

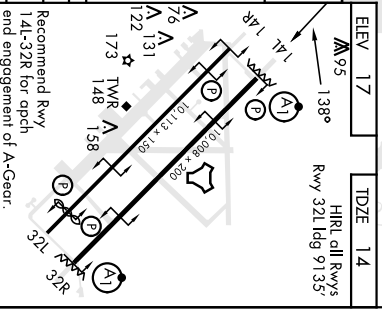
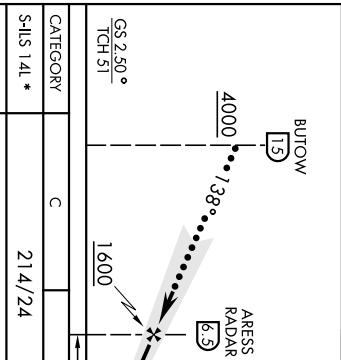
GND CON **121.9 259.3**

CLNC DEL **118.05 348.7**

ASR/PAR



EMERG SAFE ALT 100 NM 3300



CATEGORY	C	D	E
S-ILS 14L *	214/24	200	(200-1/2)
S-LOC 14L ***	500/50	486	(500-1)
☑ CIRCLING	540-1 1/2	580-2	620-2 1/4
	523 (600-1 1/2)	563 (600-2)	603 (700-2 1/4)

PANAMA CITY, FLORIDA	TYNDALL AFB (KPAM)				
	Arndt 4	20MAY21	30°04'N-85°34'W		
Knots	120	140	160	180	200
Mins:Sec	2:39	2:16	1:59	1:46	1:35

# HILLS or LOC Y RWY 14L

[USAF]

TYNDALL AFB (KPAM)

LOC I-PAM	APCH CRS	Rwy Ldg	<b>10,008</b>
<b>110.1</b>	<b>319°</b>	TDZE	<b>14</b>
		Appt Elev	<b>17</b>

▼ When ALS Inop, increase RVR to 40, vis to ¼ mile.  
 \*\*When ALS Inop, increase RVR to 60, vis to 1½ miles.



MISSED APPROACH: Track outbound PAM R-320 to 5 DME (PIMLE), then turn right to Join PAM TACAN R-104 to 20 DME (SUSIE) and hold. Maintain 3000.

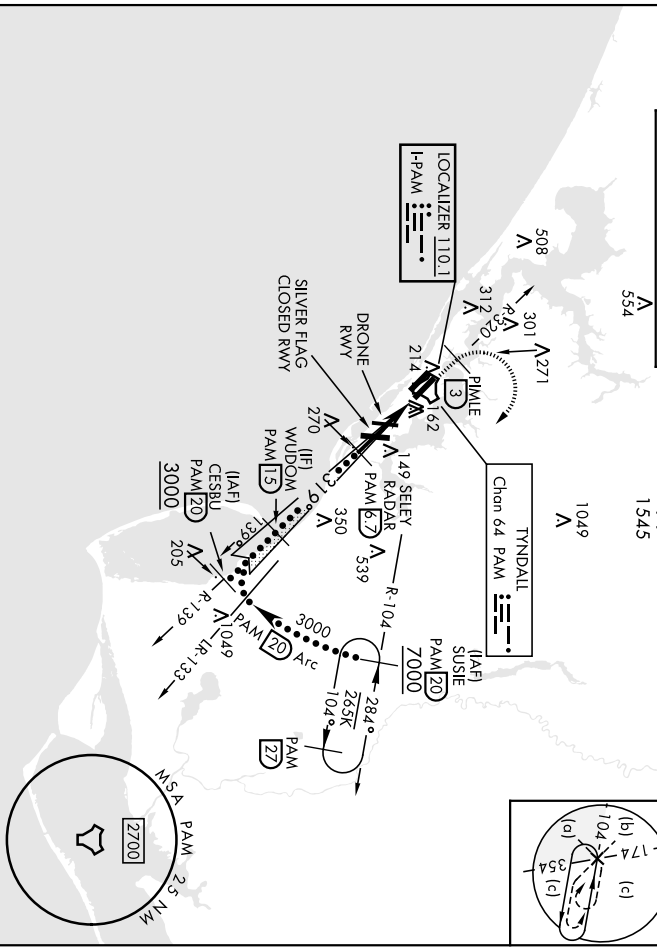
ATIS *	APP CON	
<b>254.4</b>	<b>392.1</b> (N dbv 5000') <b>120.825</b> <b>379.3</b> (N blw 5000') <b>124.15</b> <b>338.35</b> (S dbv 5000') <b>119.775</b> <b>317.45</b> (S blw 5000')	

TOWER *	<b>133.95</b> <b>263.15</b>
---------	-----------------------------

GND CON	<b>121.9</b> <b>259.3</b>
---------	---------------------------

CLNC DEL	<b>118.05</b> <b>348.7</b>
----------	----------------------------

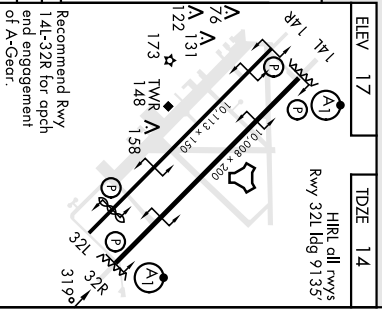
ASR/PAR	
---------	--



EMERG SAFE ALT 100 NM NM 3300

3000	PAM R-320	PIMLE	PAM R-104	SUSIE
------	-----------	-------	-----------	-------

CATEGORY	C	D	E
S-ILS 32R *	214/24	200	(200-½)
S-LOC 32R **	540/55	526	(600-1)
CIRCLING	540-1 ½	580-2	620-2 ¼
	523 (600-1 ½)	563 (600-2)	603 (700-2 ¼)



PANAMA CITY, FLORIDA

# HI-TACAN Y RWY 14L

[USAF]

TYNDALL AFB (KPAM)

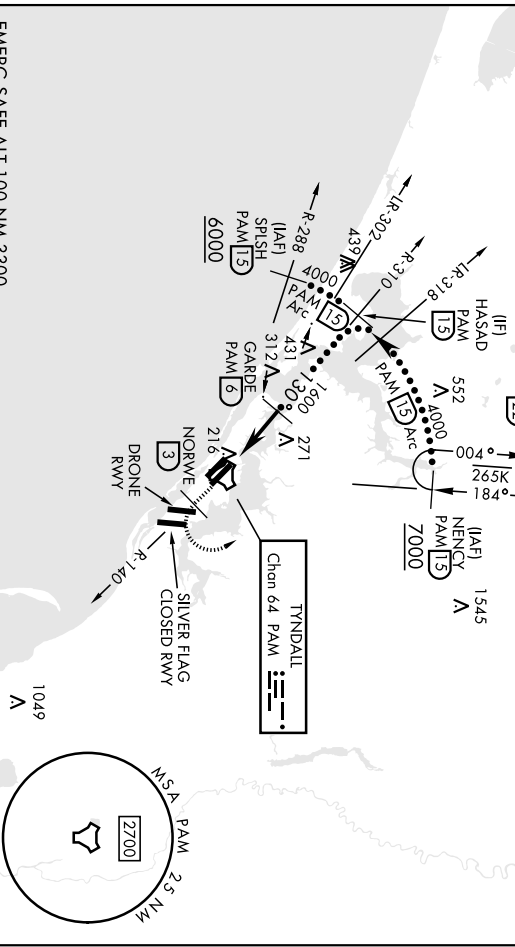
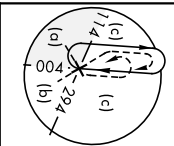
TACAN PAM	APCH CRS	Rwy/Ildg	<b>10,008</b>
Chan <b>64</b>	TDZE	Arpt Elev	<b>17</b>

\* When ALS inop, increase vis to 1 3/8 miles.



MISSED APPROACH: Track outbound PAM TACAN R-140 to 3 DME (NORWE), then turn left to join PAM R-004 to 1.5 DME (NENCY) and hold. Maintain 3000.

ATIS *	APP CON	TOWER *
<b>254.4</b>	<b>125.2</b> <b>120.825</b> <b>124.15</b> <b>119.775</b>	<b>133.95</b> <b>263.15</b>
	(N abv 5000) (N b/w 5000) (S abv 5000) (S b/w 5000)	<b>121.9</b> <b>259.3</b> <b>118.05</b> <b>348.7</b>
		GND CON CINC DEL ASR/PAR

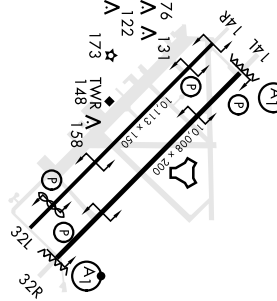
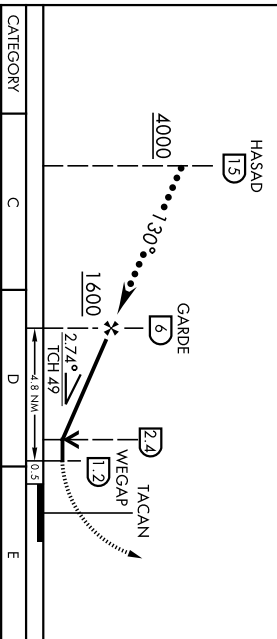


EMERG SAFE ALT 100 NM 3300

VGSI and descent angles not coincident (VGSI Angle 2.50/TCH 49).



ELEV	17	TDZE	14
HIRI all Rwys		Rwy 32L Ildg 9135'	



CATEGORY	C	D	E
S-14L*	500/50	486	(500-1)
CIRCLING	540-1 1/2 523 (600-1 1/2)	580-2 563 (600-2)	620-2 1/4 603 (700-2 1/4)

Recommend Rwy 14L-32R for opch and engagement of A-Geor.

PANAMA CITY, FLORIDA  
TYNDALL AFB (KPAM)  
Amdt 4 20MAY21  
30°04'N-85°34'W

# HI-TACAN Y RWY 14L

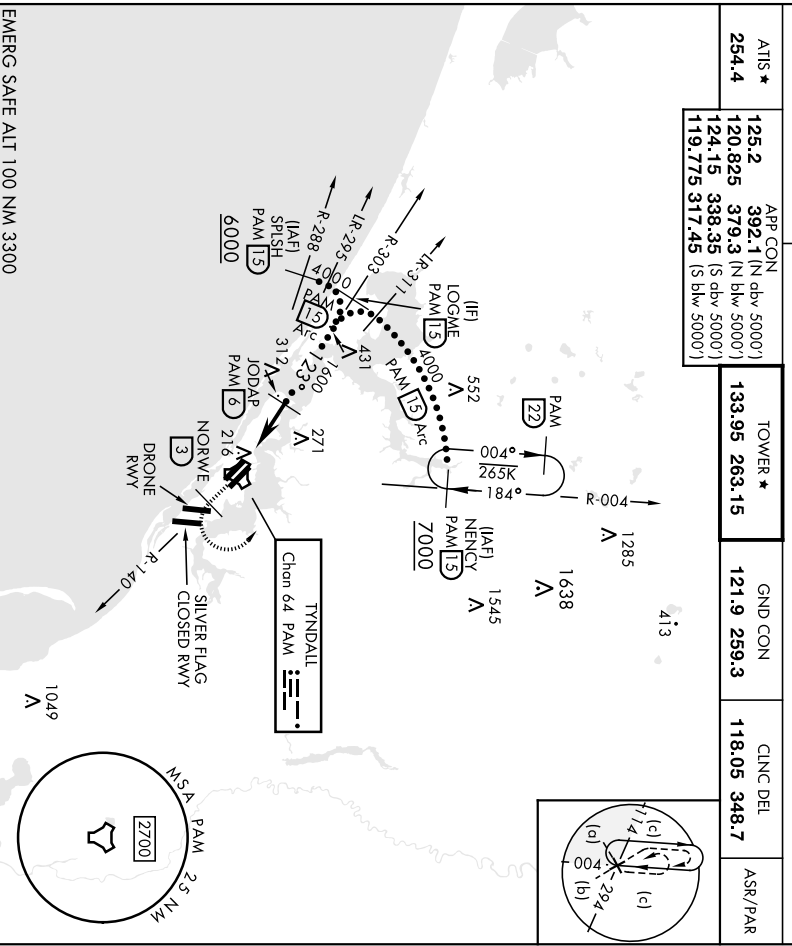
# HI-TACAN Y RWY 14R

[USAF]

TYNDALL AFB (KPAM)

TACAN PAM Chan <b>64</b>	APCH CRS <b>123°</b>	Rwy/Ldg TDZE Appt Elev <b>17</b>	[USAF]	TOWER ★ <b>139.95 263.15</b>	GND CON <b>121.9 259.3</b>	CINC DEL <b>118.05 348.7</b>	ASR/PAR
ATIS ★ <b>254.4</b>	APP CON <b>125.2 392.1</b> (N dbv 5000) <b>120.825 379.3</b> (N blw 5000) <b>124.15 338.35</b> (S dbv 5000) <b>119.775 317.45</b> (S blw 5000)						

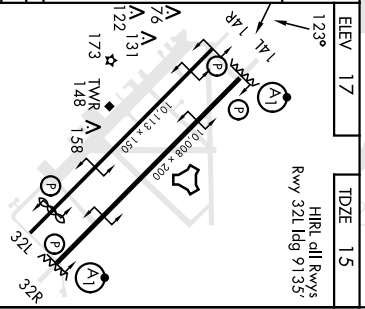
MISSED APPROACH: Track outbound PAM TACAN R-140 to 3 DME (NORWE), then turn left to join PAM R-004 to 1.5 DME (NENCY) and hold. Maintain 3000.



SE-3, 22 FEB 2024 to 21 MAR 2024

SE-3, 22 FEB 2024 to 21 MAR 2024

EMERG SAFE ALT 100 NM 3300			
LOGME 13	JODAP 6	TACAN 24 13	SAATA 13
VGS1 and descent angles not coincident (VGS1 Angle 2.50/TCH 36).			
3000 PAM R-140	NORWE PAM 3	NENCY PAM 15	ELEV 17
			TDZE 15
			HIRL all Rwy's Rwy 32L ldg 9135'
CATEGORY	C	D	E
S-14R	480-1¾	465	(500-1¾)
CIRCLING	540-1½ 523 (600-1½)	580-2 563 (600-2)	620-2¼ 603 (700-2¼)
PANAMA CITY, FLORIDA Archt 4 17JUN21 30°04'N-85°34'W			



Recommend Rwy 14L-32R for opch and engagement of A-Geor.  
 TYNDALL AFB (KPAM)

# HI-TACAN Y RWY 14R







# ILS or LOC Z RWY 14L

[USAF]

TYNDALL AFB (KPAM)

LOC 1-TYPE	APCH CRS	Rwy Idg	<b>10,008</b>
<b>111.5</b>	<b>138°</b>	TDZE	<b>14</b>
		Appl Elev	<b>17</b>

ALSF-1

▼ \* When ALS Inop, increase RVR to 40 and vis to ¾ mile.  
 \*\* When ALS Inop, increase CAT AB RVR to 55, vis to 1 mile.  
 CAT CDE vis to 1½ miles.

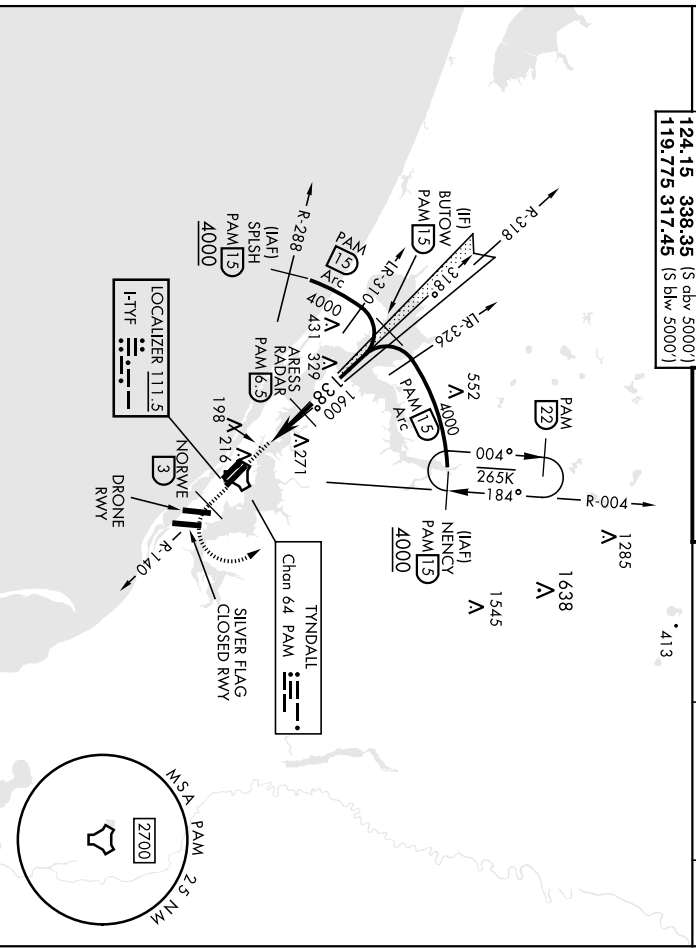
MISSED APPROACH: Track outbound PAM TACAN R-140 to 3 DME (NORWE), then turn left to join PAM R-004 to 1.5 DME (NENCY) and hold. Maintain 3000.

ATIS *	APP CON	TOWER *	
<b>254.4</b>	<b>125.2</b>	<b>133.95</b>	<b>263.15</b>
	<b>120.825</b>		
	<b>124.15</b>		
	<b>119.775</b>		

GND CON	<b>121.9</b>	<b>259.3</b>
---------	--------------	--------------

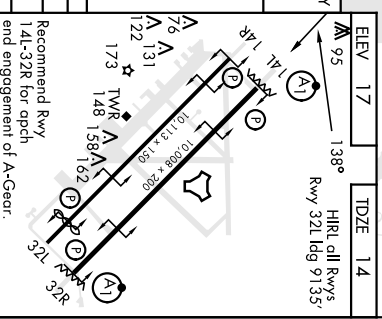
CLNC DEL	<b>118.05</b>	<b>348.7</b>
----------	---------------	--------------

ASR/PAR	
---------	--



EMERG SAFE ALT 100 NM 3300

GS 2.50°	TCH 51'			
CATEGORY	A	B	C	D
SLS 14L *	214/24		200	
S-LOC 14L**	500/24 486 (500-½)		500/50	
CIRCLING	540-1 523 (600-1)	540-1½ 523 (600-1½)	580-2 563 (600-2)	620-2¼ 603 (700-2¼)



Recommend Rwy 14L-32R for opch and engagement of A-Geor.

FAT to MAP 5.3 NM	
Knots	60 90 120 150 180
Min:Sec	5:18 3:32 2:39 2:07 1:46

PANAMA CITY, FLORIDA  
 Arrch 4 20MAY21

30°04'N-85°34'W

# ILS or LOC Z RWY 14L

TYNDALL AFB (KPAM)

# ILS or LOC Z RWY 32R

[USAF]

TYNDALL AFB (KPAM)

LOC I-PAM	APCH CRS	Rwy Idg	<b>10,008</b>
<b>110.1</b>	<b>319°</b>	TDZE	<b>14</b>
		Arpt Elev	<b>17</b>

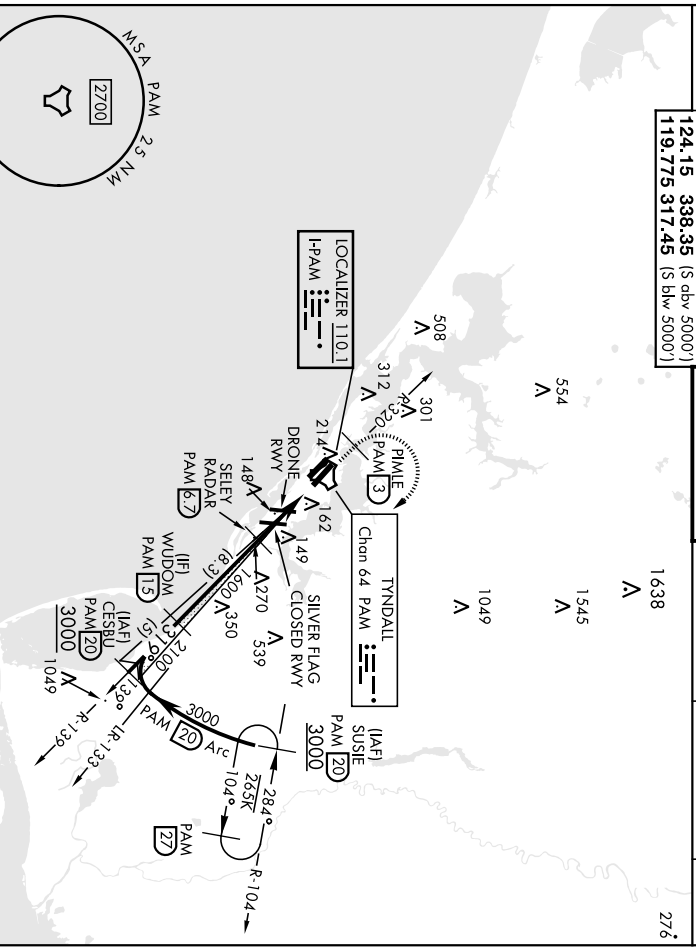
▼ When ALS Inop, increase RVR to 40, vis to ¾ mile.  
 \*\* When ALS Inop, increase CAT AB RVR to 55, vis to 1 mile, CAT CDE vis to 1½ miles.



MISSED APPROACH: Track outbound PAM R-320 to 3 DME (PIMLE), then turn right to join PAM R-104 to 20 DME (SUSIE) and hold. Maintain 3000.

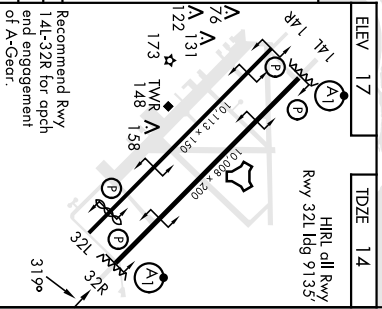
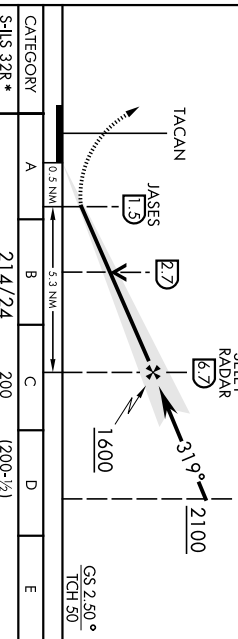
ATIS *	APP CON	TOWER *	
<b>254.4</b>	<b>125.2</b> (N adv 5000ft) <b>120.825</b> (N blw 5000ft) <b>124.15</b> (S adv 5000ft) <b>119.775</b> (S blw 5000ft)	<b>133.95</b> <b>263.15</b>	

GND CON	CLNC DEL	ASR/PAR
<b>121.9</b> <b>259.3</b>	<b>118.05</b> <b>348.7</b>	



EMERG SAFE ALT 100 NM 3300

3000	PIMLE	PAM	SUSIE
PAM R-320	PAM 3	PAM R-104	PAM 20



CATEGORY	A	B	C	D	E
S-ILS 32R*	214/24				
S-LOC 32R**	540/24	526 (600-¾)	540/55	526 (600-1)	540-1½
CIRCLING	540-1	523 (600-1)	523 (600-1½)	563 (600-2)	603 (700-2¼)

FAE to MAP 5.3 NM	60	90	120	150	180
Knobs	5:18	3:32	2:39	2:07	1:46
Min:Sec					

PANAMA CITY, FLORIDA

30°04'N-85°34'W

TYNDALL AFB (KPAM)

# ILS or LOC Z RWY 32R

Amch 4 07OCT11



PANAMA CITY, FLORIDA

# RNAV (GPS) RWY 14L

WAAS CH 71271 W14A	APCH CRS 138°	Rwy ldg TDZE Arprt Elev	10,008 14 17
--------------------------	------------------	-------------------------------	--------------------

(USAF)

TYNDALL AFB (KPAM)

RNP APCH	ALSF-1	MISSED APPROACH: Climb to 600 then climbing left turn to 3000 direct NENCY and hold.
----------	--------	--

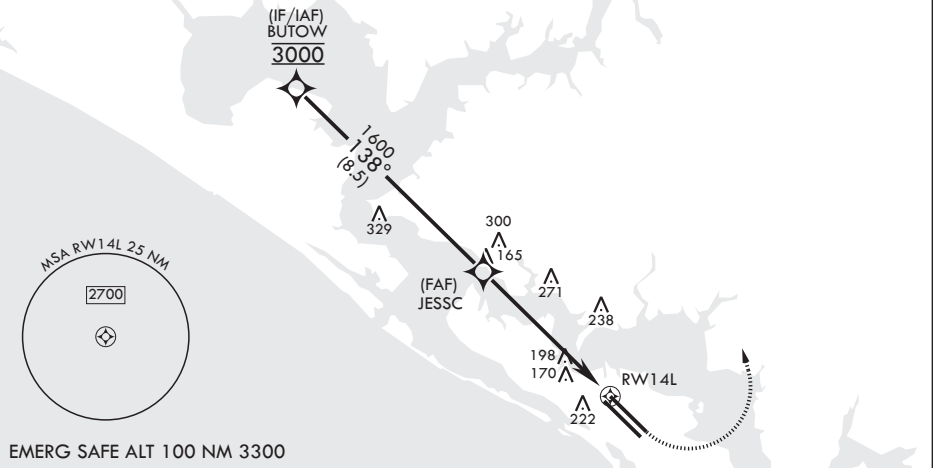
\* When ALS inop increase RVR to 40, vis to 3/4 mile.  
 \*\* When ALS inop increase RVR to 45, vis to 7/8 mile.

ATIS* 254.4	APP CON/DEP CON 119.775 317.45 BLW 5000' 124.15 338.35 ABV 5000'	TOWER* 133.95 263.15	GND CON 121.9 259.3	CLNC DEL 118.05 348.7	ASR/PAR
----------------	--	-------------------------	------------------------	--------------------------	---------

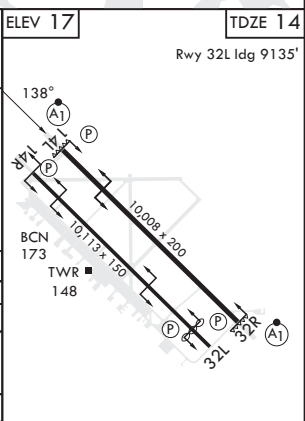
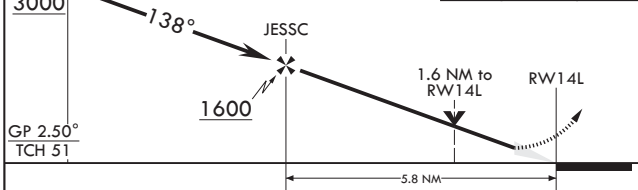
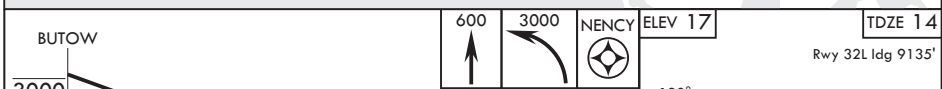
\*\*\* When ALS inop increase CAT AB RVR to 55, vis to 1 mile; CAT CDE vis to 1 3/8 miles.

For uncompensated Baro-VNAV systems, Procedure NA below 15°C (59°F) or above 54°C (130°F).

Average Cold Temperature based on standard -30.00°C ISA deviation.



EMERG SAFE ALT 100 NM 3300



CATEGORY	A	B	C	D	E
LPV DA*	214/24		200	(200-½)	
LNAV/VNAV DA**	276/24 262 (300-½)	287/24 273 (300-½)	295/24 281 (300-½)	306/24	292 (300-½)
LNAV MDA***	500/24 486 (500-½)		500/50	486	(500-1)
<b>C</b> CIRCLING	540-1 523 (600-1)		540-1½ 523 (600-1½)	580-2 563 (600-2)	620-2¼ 603 (700-2¼)

HIRL all Rwy's  
Recommend Rwy 14L-32R for  
apch end engagement of A-Gear.

PANAMA CITY, FLORIDA

30°04'N - 85°34'W

TYNDALL AFB (KPAM)

Amdt 4 20MAY21

# RNAV (GPS) RWY 14L

SE-3, 22 FEB 2024 to 21 MAR 2024

SE-3, 22 FEB 2024 to 21 MAR 2024

PANAMA CITY, FLORIDA

# RNAV (GPS) RWY 14R

WAAS CH 71278 W14B	APCH CRS 138°	Rwy ldg 10,113	TDZE 15	Arprt Elev 17
--------------------------	------------------	-------------------	------------	------------------

- (USAF)

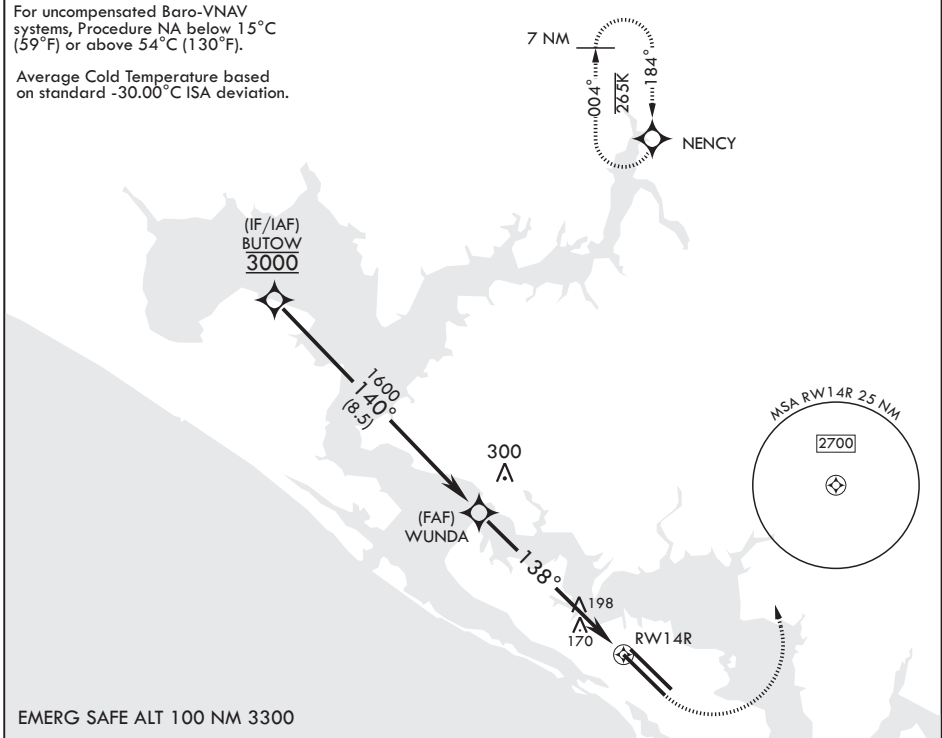
TYNDALL AFB (KPAM)

RNP APCH MISSED APPROACH: Climb to 600 then climbing left turn to 3000 direct NENCY and hold.

ATIS ★ 254.4	APP CON/DEP CON 119.775 317.45 BLW 5000' 124.15 338.35 ABV 5000'	TOWER ★ 133.95 263.15	GND CON 121.9 259.3	CLNC DEL 118.05 348.7	ASR/PAR
-----------------	--	--------------------------	------------------------	--------------------------	---------

For uncompensated Baro-VNAV systems, Procedure NA below 15°C (59°F) or above 54°C (130°F).

Average Cold Temperature based on standard -30.00°C ISA deviation.



EMERG SAFE ALT 100 NM 3300

BUTOW	VGSi and RNAV glidepath not coincident (VGSi angle 2.50/TCH 36).					600	3000	NENCY	ELEV 17	TDZE 15
3000	140°					WUNDA	1600	138°	1.6 NM to RWY 14R	Rwy 32L ldg 9135'
GP 2.50°							TCH 45			
					5.8 NM					
CATEGORY	A	B	C	D	E					
LPV DA	215-¾		200	(200-¾)						
LNAV/VNAV DA	420-1⅞		405	(500-1⅞)						
LNAV MDA	500-1	485 (500-1)	500-1⅞	485	(500-1⅞)					
☐ CIRCLING	540-1	523 (600-1)	540-1½ 523 (600-1½)	580-2 563 (600-2)	620-2¼ 603 (700-2¼)	HIRL all Rwys Recommend Rwy 14L-32R for apch end engagement of A-Gear.				

PANAMA CITY, FLORIDA

30°04'N - 85°34'W

TYNDALL AFB (KPAM)

Amdt 3 22APR21

# RNAV (GPS) RWY 14R

SE-3, 22 FEB 2024 to 21 MAR 2024

SE-3, 22 FEB 2024 to 21 MAR 2024

PANAMA CITY, FLORIDA

# RNAV (GPS) RWY 32L

WAAS CH <b>71279</b> <b>W32B</b>	APCH CRS <b>319°</b>	Rwy ldg TDZE Arpt Elev	<b>9135</b> <b>17</b> <b>17</b>
--	-------------------------	------------------------------	---------------------------------------

- (USAF)

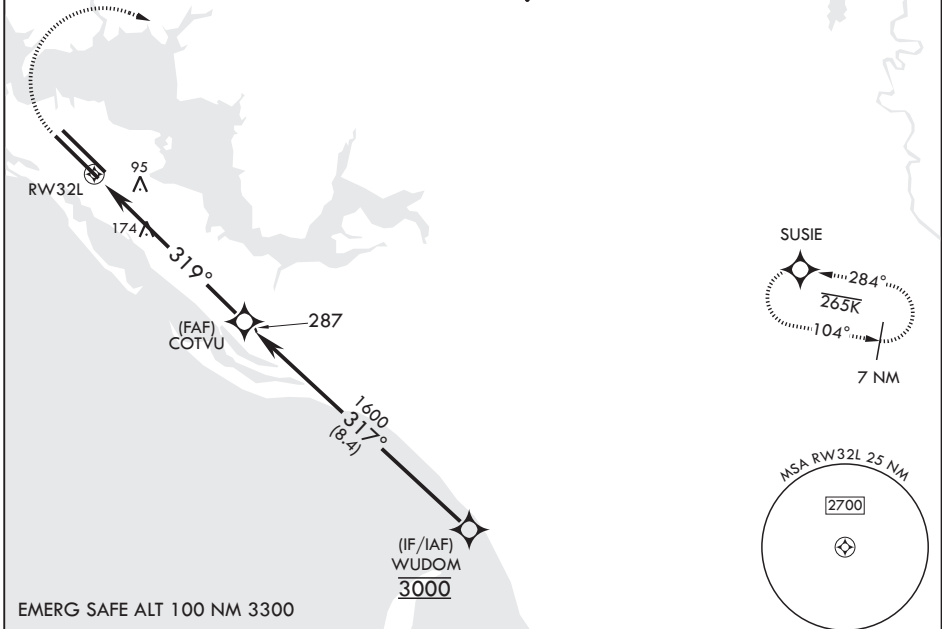
TYNDALL AFB (KPAM)

RNP APCH MISSED APPROACH: Climb to 600 then climbing right turn to 3000 direct SUSIE and hold.

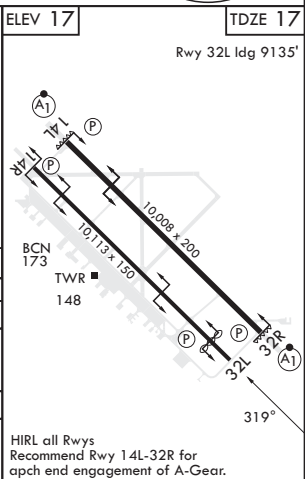
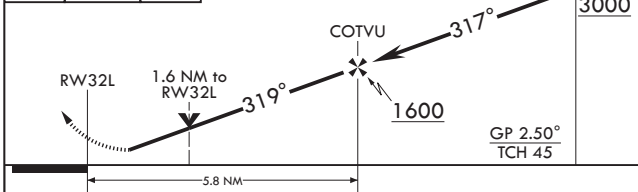
ATIS★ <b>254.4</b>	APP CON/DEP CON <b>119.775 317.45</b> BLW 5000' <b>124.15 338.35</b> ABV 5000'	TOWER★ <b>133.95 263.15</b>	GND CON <b>121.9 259.3</b>	CLNC DEL <b>118.05 348.7</b>	ASR/PAR
-----------------------	--	--------------------------------	-------------------------------	---------------------------------	---------

For uncompensated Baro-VNAV systems, Procedure NA below 16°C (61°F) or above 54°C (130°F). Average Cold Temperature based on standard -30.00°C ISA deviation.

115



EMERG SAFE ALT 100 NM 3300



CATEGORY	A	B	C	D	E
LPV DA	217- <sup>3</sup> / <sub>4</sub>		200	(200- <sup>3</sup> / <sub>4</sub> )	
LNAV/VNAV DA	291- <sup>7</sup> / <sub>8</sub> 274 (300- <sup>7</sup> / <sub>8</sub> )	302- <sup>7</sup> / <sub>8</sub> 285 (300- <sup>7</sup> / <sub>8</sub> )	310- <sup>7</sup> / <sub>8</sub> 293 (300- <sup>7</sup> / <sub>8</sub> )	321- <sup>7</sup> / <sub>8</sub>	304 (400- <sup>7</sup> / <sub>8</sub> )
LNAV MDA	480-1	463 (500-1)	480-1 <sup>1</sup> / <sub>2</sub>	463	(500-1 <sup>1</sup> / <sub>2</sub> )
CIRCLING	540-1	523 (600-1)	540-1 <sup>1</sup> / <sub>2</sub> 523 (600-1 <sup>1</sup> / <sub>2</sub> )	580-2 563 (600-2)	620-2 <sup>1</sup> / <sub>4</sub> 603 (700-2 <sup>1</sup> / <sub>4</sub> )

HIRL all Rwy's Recommend Rwy 14L-32R for apch end engagement of A-Gear.

PANAMA CITY, FLORIDA

30°04'N - 85°34'W

TYNDALL AFB (KPAM)

Amdt 3 22APR21

# RNAV (GPS) RWY 32L

SE-3, 22 FEB 2024 to 21 MAR 2024

SE-3, 22 FEB 2024 to 21 MAR 2024

PANAMA CITY, FLORIDA

# RNAV (GPS) RWY 32R

WAAS CH 52209 W32A	APCH CRS 319°	Rwy ldg TDZE Arprt Elev	10,008 14 17
--------------------------	------------------	-------------------------------	--------------------

- (USAF)

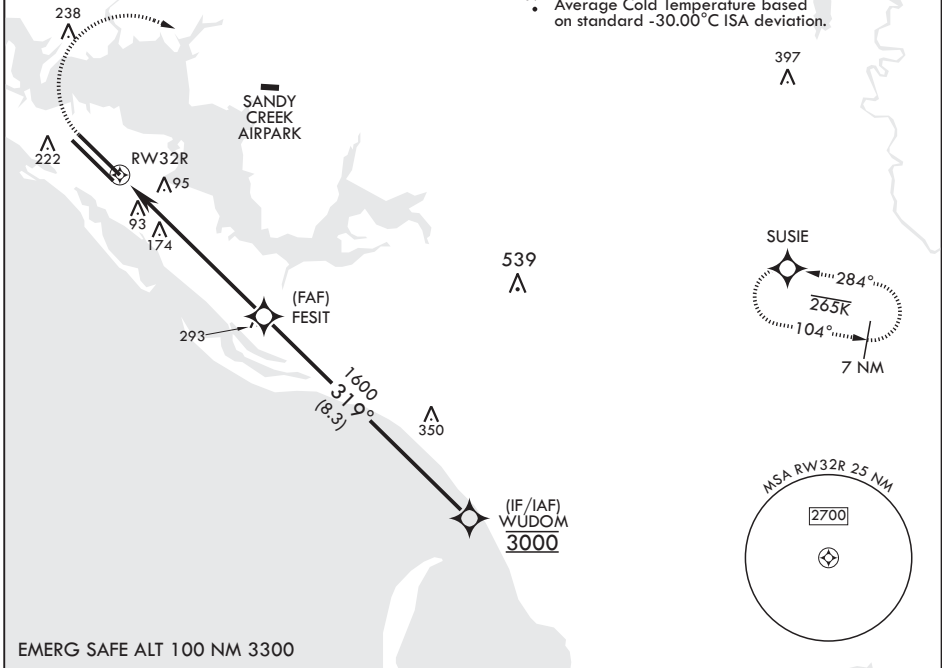
TYNDALL AFB (KPAM)

RNP APCH	ALSF-1	MISSED APPROACH: Climb to 600 then climbing right turn to 3000 direct SUSIE and hold.
<p>▼ * When ALS inop increase RVR to 40, vis to 3/4 mile. ** When ALS inop increase RVR to 55, vis to 1 mile.</p>		

ATIS★ 254.4	APP CON/DEP CON 119.775 317.45 BLW 5000' 124.15 338.35 ABV 5000'	TOWER★ 133.95 263.15	GND CON 121.9 259.3	CLNC DEL 118.05 348.7	ASR/PAR
----------------	--	-------------------------	------------------------	--------------------------	---------

\*\*\* When ALS inop increase CAT AB RVR to 55, vis to 1 mile, CAT CDE vis to 1 3/8 miles.

For uncompensated Baro-VNAV systems, Procedure NA below 15°C (59°F) or above 54°C (130°F).  
Average Cold Temperature based on standard -30.00°C ISA deviation.



SE-3, 22 FEB 2024 to 21 MAR 2024

SE-3, 22 FEB 2024 to 21 MAR 2024

EMERG SAFE ALT 100 NM 3300

600 crs 318°	3000 SUSIE	WUDOM 3000 ELEV 17 TDZE 14			
CATEGORY	A	B	C	D	E
LPV DA*	214/24		200	(200-½)	
LNAV/VNAV DA**	362/30		348	(400-¾)	
LNAV MDA***	480/24	466 (500-½)	480/50	466	(500-1)
Ⓢ CIRCLING	540-1	523 (600-1)	540-1½ 523 (600-1½)	580-2 563 (600-2)	620-2¼ 603 (700-2¼)

PANAMA CITY, FLORIDA

30°04'N - 85°34'W

TYNDALL AFB (KPAM)

Amdt 3 22APR21

# RNAV (GPS) RWY 32R

[USAF]

TYNDALL AFB (KPAM)

TACAN PAM Chan 64	APCH CRS 130°	Rwy Idg 14	TDZE Appl Elev 17
ATIS ★ 254.4	APP CON 125.2 120.825 124.15 119.775	(N abv 5000') (N abv 5000') (S abv 5000') (S blw 5000')	TOWER ★ 133.95 263.15

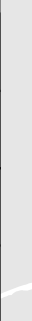
ALSIF-1 A1	MISSED APPROACH: Track outbound PAM TACAN R-140 to 3 DME (NORWE), then turn left to join PAM R-004 to 5 DME (NENGY) and hold. Maintain 3000.	GND CON 121.9 259.3	CLNC DEL 118.05 348.7	ASR/PAR
---------------	--	---------------------------	-----------------------------	---------

★ When ALS inop, increase CAT AB RVR to 55 and vis to 1 mile, CAT CDE vis to 3/8 miles.

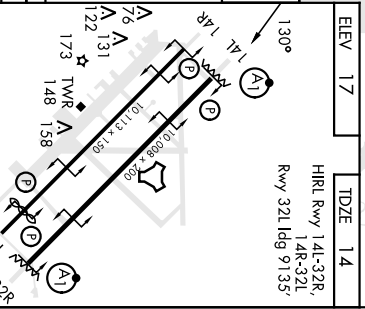
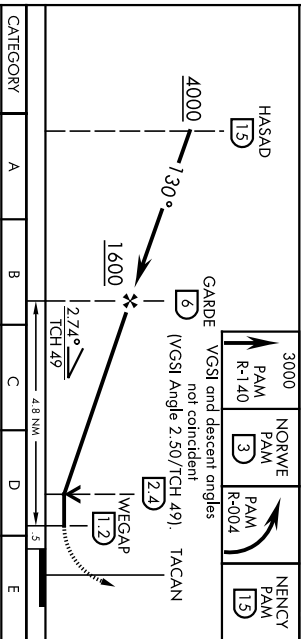
SE-3, 22 FEB 2024 to 21 MAR 2024

SE-3, 22 FEB 2024 to 21 MAR 2024

EMERG SAFE ALT 100 NM 3300



ELEV	17	TDZE	14
HIRL Rwy	14L-32R, 14R-32L		
Rwy	32L Idg 9135'		



CATEGORY	A	B	C	D	E
S-14L*	500/24	486 (500-1/2)	500/50	486 (500-1)	
CIRCLING	540-1	523 (600-1)	540-1 1/2	580-2 563 (600-2)	620-2 1/4 603 (700-2 1/4)

Recommend Rwy 14L-32R for apch and engagement of A-Geor.

# TACAN Z RWY 32R

[USAF]

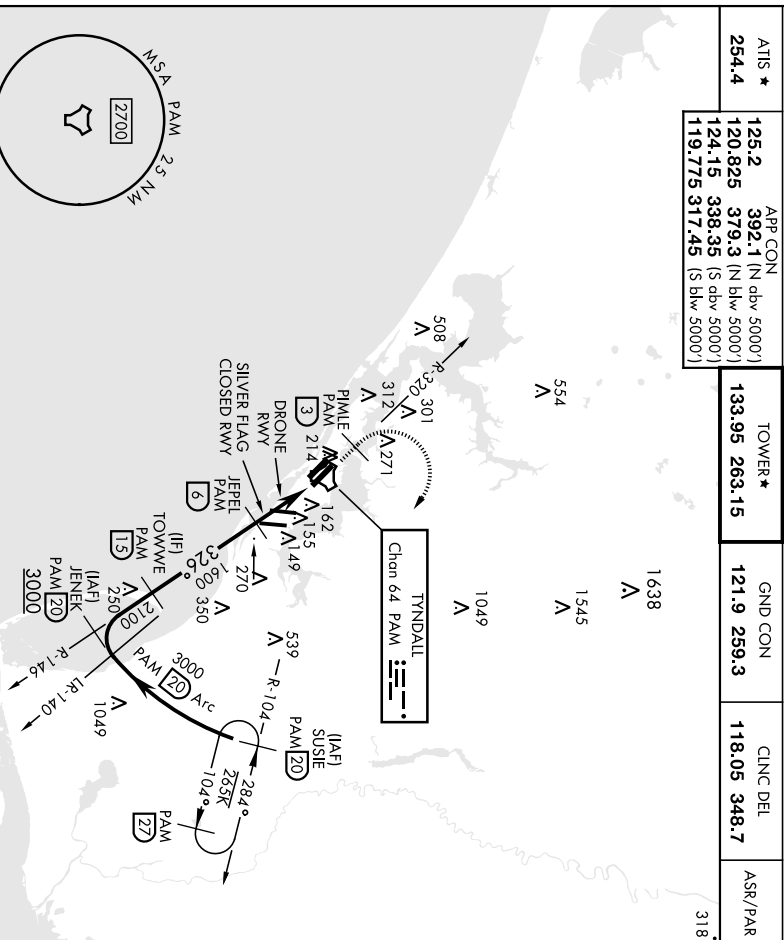
TYNDALL AFB (KPAM)

TACAN PAM Chan <b>64</b>	APCH CRS <b>326°</b>	Rwy/ldg <b>10,008</b>
	TDZE <b>14</b>	Arpt Elev <b>17</b>
<b>ATIS *</b>	APP CON <b>125.2</b>	120.825 (N dbv 5000') 124.15 (S dbv 5000') 119.775 317.45 (S blw 5000')
	TOWER <b>139.95</b>	263.15
	GND CON <b>121.9</b>	259.3
	CINC DEL <b>118.05</b>	348.7
	ASR/PAR	

▲ \*When ATIS inop, increase CAT AB RWY to 55, vis to 1 mile, CAT CDE vis to 1 3/8 miles.



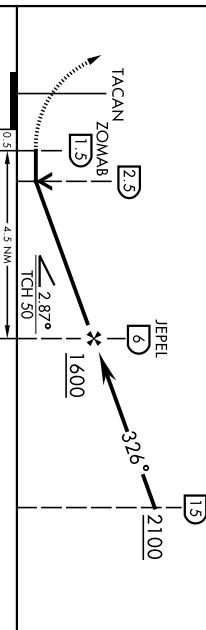
MISSED APPROACH: Track outbound PAM TACAN R-320 to 3 DME (PIMLE), then turn right to join PAM R-104 to 20 DME (SUSIE) and hold. Maintain 3000.



EMERG SAFE ALT 100 NM 3300

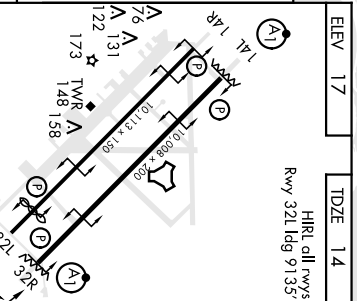
3000	PIMLE PAM R-320	PAM R-104	SUSIE PAM R-104
------	-----------------	-----------	-----------------

VGSI and descent angles not coincident (VGSI Angle 2.50/TCH 501).



CATEGORY	A	B	C	D	E
S-32R*	480/24	466 (500-1/2)	480/50	466 (500-1)	540-1 1/2
CIRCLING	540-1	523 (600-1)	540-1 1/2	580-2	520-2 1/4
			523 (600-1 1/2)	563 (600-2)	603 (700-2 1/4)

CATEGORY	A	B	C	D	E
S-32R*	480/24	466 (500-1/2)	480/50	466 (500-1)	540-1 1/2
CIRCLING	540-1	523 (600-1)	540-1 1/2	580-2	520-2 1/4
			523 (600-1 1/2)	563 (600-2)	603 (700-2 1/4)



PANAMA CITY, FLORIDA  
 Arch 4 12AUG21  
 30°04'N-85°34'W  
 TYNDALL AFB (KPAM)  
**TACAN Z RWY 32R**