

APP CRS	Rwy Idg	5009
137°	TDZE	494
	Apt Elev	494

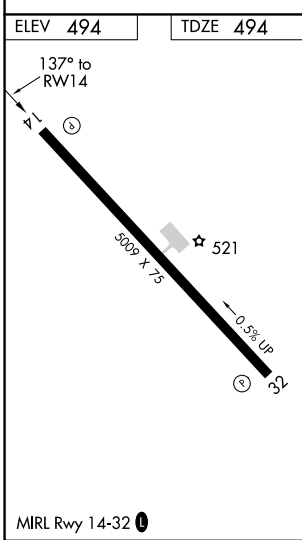
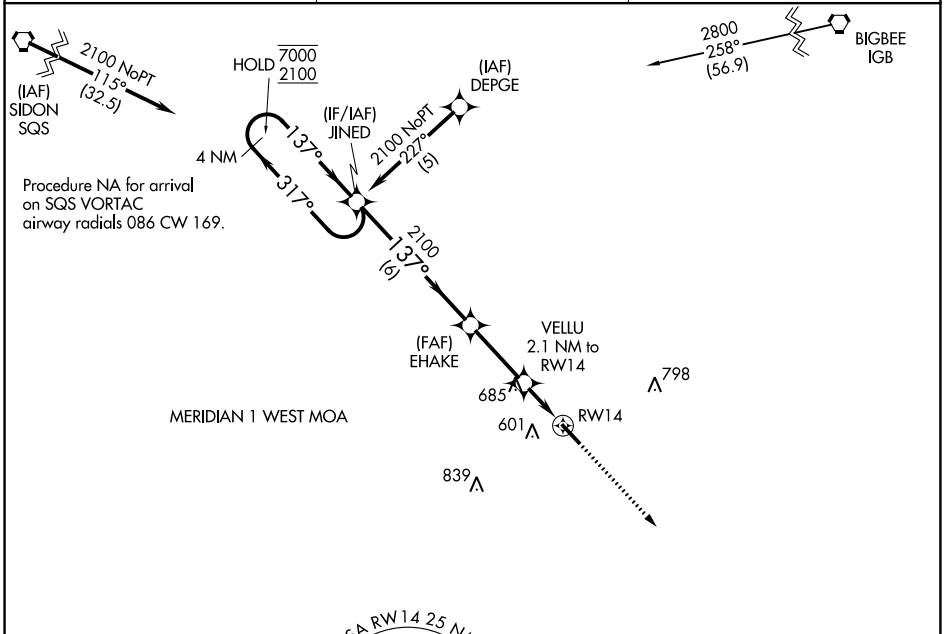
RNAV (GPS) RWY 14

KOSCIUSKO-ATTALA COUNTY (OSX)

RNP APCH. MISSED APPROACH: Climb to 2200 direct GUDRE and hold.

▼ Rwy 14 helicopter visibility reduction below 1 SM NA. Procedure NA at night.
▲ NA Use Philadelphia altimeter setting; when not received, use Greenwood altimeter setting and increase all MDAs 80 feet and LNAV Cat C and Circling Cat C visibility ¼ SM.

MPE AWOS-3P 118.725	MEMPHIS CENTER 132.75 350.25	CTAF 122.9
-------------------------------	--	----------------------



4 NM Holding Pattern	JINED	EHAKE	VELLU 2.1 NM to RW14	RW14
7000 / 2100	317° / 137°	137°	2100	1180
6 NM		2.8 NM		2.1 NM

CATEGORY	A	B	C	D
LNAV MDA	1020-1	526 (600-1)	1020-1½ 526 (600-1½)	NA
CIRCLING	1020-1	526 (600-1)	1020-1½ 526 (600-1½)	NA

SC-4, 17 JUN 2021 to 15 JUL 2021

SC-4, 17 JUN 2021 to 15 JUL 2021

APP CRS	Rwy Idg	5009
317°	TDZE	480
	Apt Elev	494

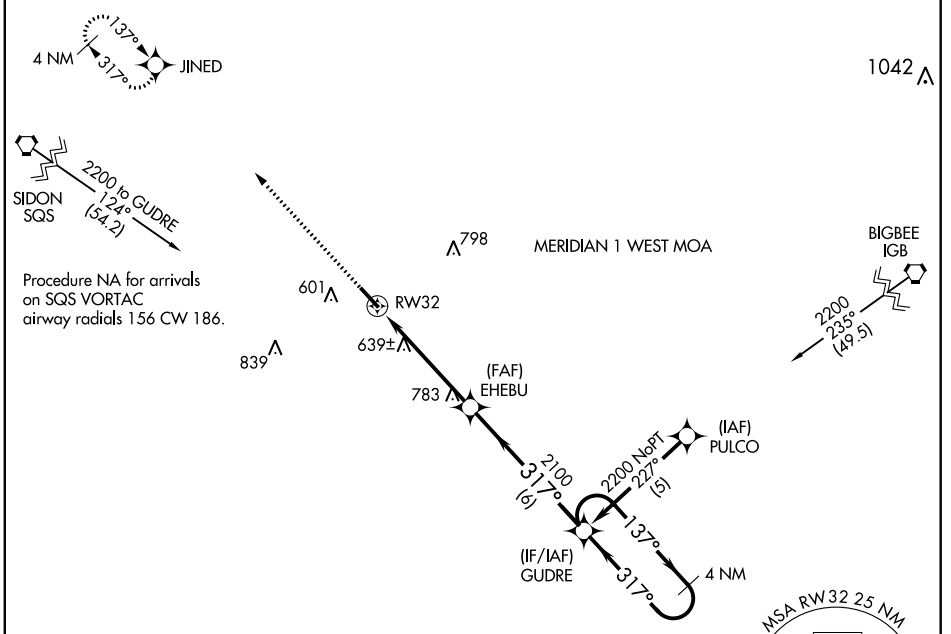
RNAV (GPS) RWY 32

KOSCIUSKO-ATTALA COUNTY (OSX)

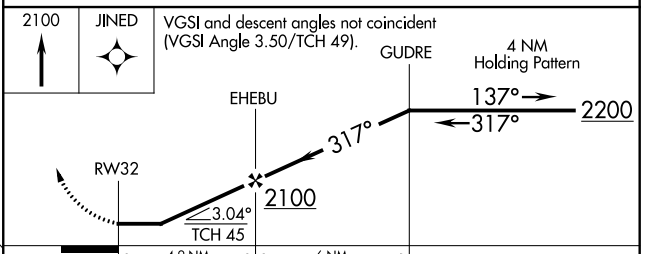
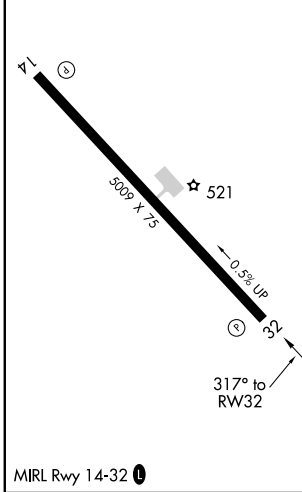
⚠ DME/DME RNP-0.3 NA. Helicopter visibility reduction below 1 SM NA. Procedure NA at night. Use Philadelphia altimeter setting; when not received, use Greenwood altimeter setting and increase all MDA 100 feet and LNAV Cat C visibility $\frac{3}{8}$ mile and Circling Cat C visibility $\frac{1}{4}$ mile.

MISSED APPROACH: Climb to 2100 direct JINED and hold.

MPE AWOS-3P 118.725	MEMPHIS CENTER 132.75 350.25	CTAF 122.9
-------------------------------	--	----------------------



ELEV	494	TDZE	480
------	-----	------	-----



CATEGORY	A	B	C	D
LNAV MDA	960-1	480 (500-1)	960-1 $\frac{3}{8}$ 480 (500-1 $\frac{3}{8}$)	NA
CIRCLING	1020-1	526 (600-1)	1020-1 $\frac{1}{2}$ 526 (600-1 $\frac{1}{2}$)	NA

SC-4, 17 JUN 2021 to 15 JUL 2021

SC-4, 17 JUN 2021 to 15 JUL 2021