

WAAS CH 56614 W22A	APP CRS 220°	Rwy Idg TDZE 13 Apt Elev 13	5500
--	------------------------	---	-------------

RNAV (GPS) RWY 22

ORANGE COUNTY (OR.G)

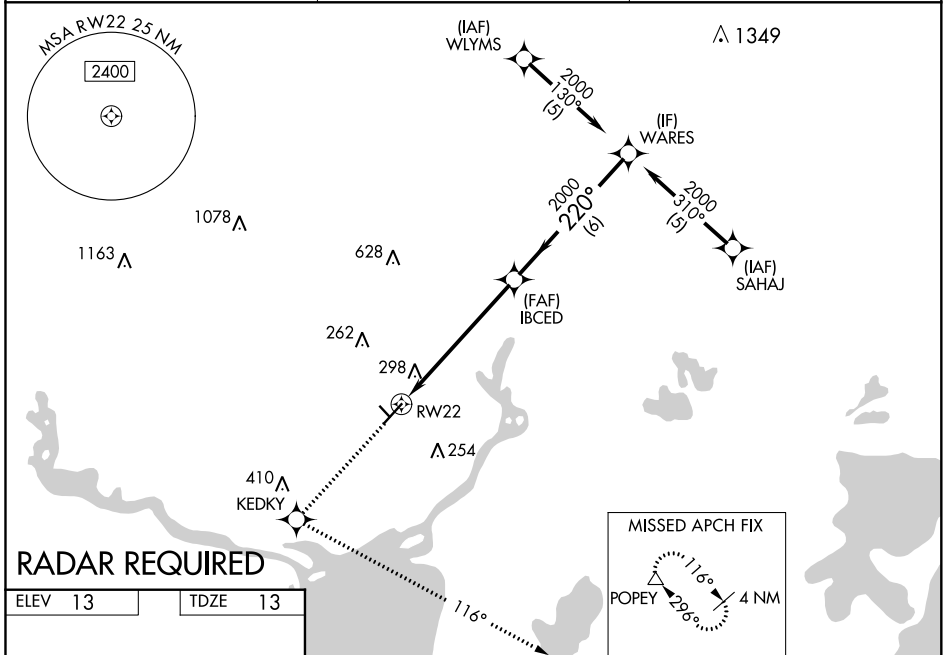
⚠ For uncompensated Baro-VNAV systems, LNAV/VNAV NA below -15°C (5°F) or above 54°C (130°F). DME/DME RNP-0.3 NA. Visibility reduction by helicopters NA. When local altimeter setting not received, use Jack Brooks Rgnl altimeter setting and increase all DA 32 feet and all MDA 40 feet, increase LPV and LNAV/VNAV all Cats visibility ¼ mile, and LNAV and Circling Cat C visibility ¼ mile. Baro-VNAV and VDP NA when using Jack Brooks Rgnl altimeter setting. Circling NA to Rwy 13/31.

MISSED APPROACH: Climb to 2000 direct KEDKY and left turn via track 116° to POPEY and hold.

AWOS-3
118.975

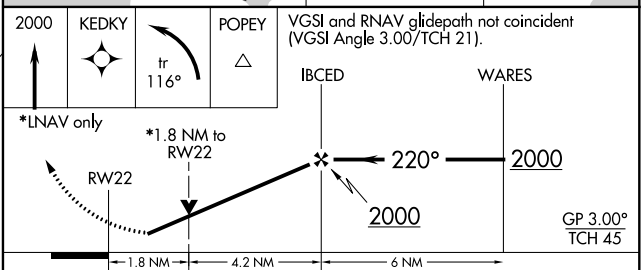
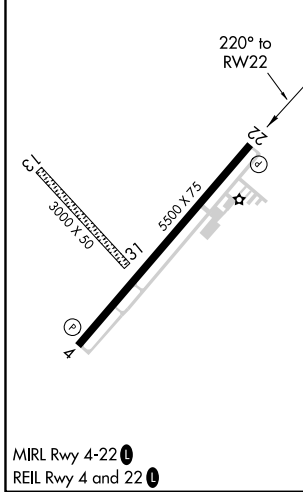
HOUSTON APP CON
121.3 377.1

UNICOM
122.8 (CTAF) 0



RADAR REQUIRED

ELEV 13	TDZE 13
---------	---------



CATEGORY	A	B	C	D
LPV DA		329-1	316 (400-1)	NA
LNAV/VNAV DA		674-2 ¼	661 (700-2 ¼)	NA
LNAV MDA	600-1	587 (600-1)	600-1 ½ 587 (600-1 ½)	NA
CIRCLING	660-1	647 (700-1)	660-1 ¾ 647 (700-1 ¾)	NA

SC-5, 25 FEB 2021 to 25 MAR 2021

SC-5, 25 FEB 2021 to 25 MAR 2021

VOR/DME BPT 114.5 Chan 92	APP CRS 229°	Rwy Idg 5500 TDZE 13 Apt Elev 13
---	------------------------	---

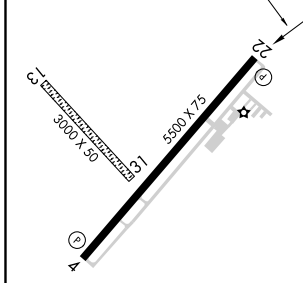
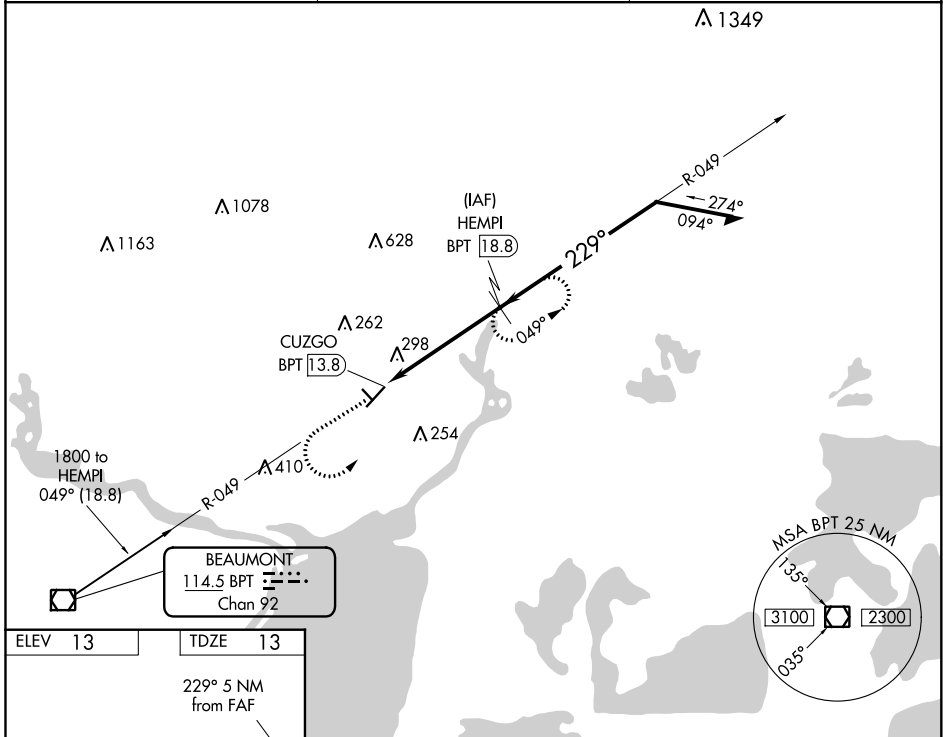
VOR/DME RWY 22

ORANGE COUNTY (OR.G)

⚠ Visibility reduction by helicopters NA. Circling NA to Rwy 13/31. VDP NA when using Jack Brooks Rgnl altimeter setting.
⚠ When local altimeter setting not received, use Jack Brooks Rgnl altimeter setting and increase all MDA 40 feet and increase S-22 and Circling Cat C visibility ¼ mile.

MISSED APPROACH: Climb to 1000 then climbing left turn to 2000 via BPT R-049 to HEMPI/18.8 DME and hold.

AWOS-3 118.975	HOUSTON APP CON 121.3 377.1	UNICOM 122.8 (CTAF)
--------------------------	---------------------------------------	-------------------------------



1000 2000 HEMPI BPT 18.8 BPT R-049	VGS1 and descent angles not coincident (VGS1 Angle 3.00/TCH 21).		
	HEMPI BPT 18.8 6000 049°	Remain within 10 NM	
CUZGO BPT 13.8 BPT 15.6 3.08° TCH 45	1700	1800 229°	
1.8 NM		3.3 NM	

CATEGORY	A	B	C	D
S-22	600-1	587 (600-1)	600-1½ 587 (600-1½)	NA
CIRCLING	660-1	647 (700-1)	660-1¾ 647 (700-1¾)	NA

SC-5, 25 FEB 2021 to 25 MAR 2021

SC-5, 25 FEB 2021 to 25 MAR 2021